

Product datasheet for RC207893L4

GALNT2 (NM_004481) Human Tagged Lenti ORF Clone

Product data:

Product Type:	Expression Plasmids
Product Name:	GALNT2 (NM_004481) Human Tagged Lenti ORF Clone
Tag:	mGFP
Symbol:	GALNT2
Synonyms:	CDG2T; GalNAc-T2
Mammalian Cell Selection:	Puromycin
Vector:	pLenti-C-mGFP-P2A-Puro (PS100093)
E. coli Selection:	Chloramphenicol (34 ug/mL)
ORF Nucleotide Sequence:	The ORF insert of this clone is exactly the same as(RC207893).
Restriction Sites:	SgfI-MluI
Cloning Scheme:	

Cloning sites used for ORF Shuttling:



* The last codon before the Stop codon of the ORF.

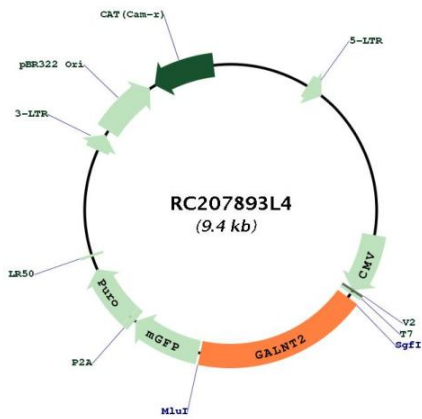
ACCN:	NM_004481
ORF Size:	1713 bp



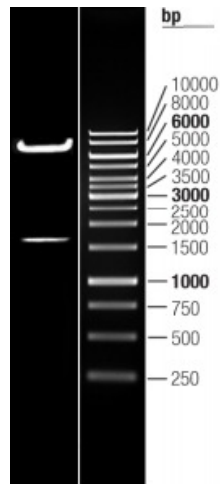
[View online »](#)

OTI Disclaimer:	The molecular sequence of this clone aligns with the gene accession number as a point of reference only. However, individual transcript sequences of the same gene can differ through naturally occurring variations (e.g. polymorphisms), each with its own valid existence. This clone is substantially in agreement with the reference, but a complete review of all prevailing variants is recommended prior to use. More info
OTI Annotation:	This clone was engineered to express the complete ORF with an expression tag. Expression varies depending on the nature of the gene.
Components:	The ORF clone is ion-exchange column purified and shipped in a 2D barcoded Matrix tube containing 10ug of transfection-ready, dried plasmid DNA (reconstitute with 100 ul of water).
Reconstitution Method:	<ol style="list-style-type: none">1. Centrifuge at 5,000xg for 5min.2. Carefully open the tube and add 100ul of sterile water to dissolve the DNA.3. Close the tube and incubate for 10 minutes at room temperature.4. Briefly vortex the tube and then do a quick spin (less than 5000xg) to concentrate the liquid at the bottom.5. Store the suspended plasmid at -20°C. The DNA is stable for at least one year from date of shipping when stored at -20°C.
RefSeq:	NM_004481.2
RefSeq Size:	4484 bp
RefSeq ORF:	1716 bp
Locus ID:	2590
UniProt ID:	Q10471
Cytogenetics:	1q42.13
Domains:	RICIN, Glycos_transf_2
Protein Families:	Secreted Protein, Transmembrane
Protein Pathways:	Metabolic pathways, O-Glycan biosynthesis
MW:	64.7 kDa
Gene Summary:	This gene encodes a member of the glycosyltransferase 2 protein family. Members of this family initiate mucin-type O-glycosylation of peptides in the Golgi apparatus. The encoded protein may be involved in O-linked glycosylation of the immunoglobulin A1 hinge region. This gene may influence triglyceride levels, and may be involved Type 2 diabetes, as well as several types of cancer. Alternative splicing results in multiple transcript variants. [provided by RefSeq, May 2014]

Product images:



Circular map for RC207893L4



Double digestion of RC207893L4 using SgfI and MluI