

Product datasheet for **RC207872**

RFX1 (NM_002918) Human Tagged ORF Clone

Product data:

Product Type:	Expression Plasmids
Product Name:	RFX1 (NM_002918) Human Tagged ORF Clone
Tag:	Myc-DDK
Symbol:	RFX1
Synonyms:	EFC; RFX
Mammalian Cell Selection:	Neomycin
Vector:	pCMV6-Entry (PS100001)
E. coli Selection:	Kanamycin (25 ug/mL)



[View online »](#)

ORF Nucleotide Sequence:

>RC207872 ORF sequence
 Red=Cloning site Blue=ORF Green=Tags(s)

TTTTGTAATACGACTCACTATAGGGCGGCCGGGAATTCGTCGACTGGATCCGGTACCGAGGAGATCTGCC
 GCC**CGGATCGCC**

ATGGCAACACAGGCGTATACTGAGCTACAGGCAGCCCCGCCACCATCCCAGCCGCCACAGGCCCCGCCAC
 AAGCCCAGCCCCAGCCGCCACCGCCACCACCCAGCGGCACCCAGCCCCGCAGCCACCACCGCTGC
 TGCCACCCTCAGCCCCAATATGTCACCGAGCTGCAGAGCCCCAGCCCCAGGCACAGCCACCGGTGGC
 CAGAAGCAGTACGTGACGGAGCTCCCGGCTGTACCCGCACCTCGCAGCCAACCGGTGCACCCACCCTT
 CGCCTGCACCCAGCAGTACATCGTGGTCACTGTCTGAAGGTGCCATGCGGGCCAGCGAGACAGTGT
 GGAGGCCAGCCCCGGCTCACCGCCAGCCAGCCGGCGTTCCTACTCAGGTGGTTCAGCAGGTGCAGGGC
 ACCCAGCAGCGGTGCTGGTCCAGACGAGCGTGCAGGCCAAGCCAGGCCACGTGTCGCCCTCCAGCTGA
 CCAACATCCAAGTCCCCAGCAGGCTCTCCACGCAGCGTCTGGTGGTGCAGAGCGCAGCCCCAGCGAG
 CAAAGGTGGCCAGTCTCCCTGACGGTCCATGGTACCCAGCAGGTGCACTCGCCCCAGAGCAGTCCCG
 GTGCAGGCCAACAGCTCTTCAGCAAGACAGCCGGGGCCCCACGGGCACAGTGCCACAGCAGTGCAGG
 TCCACGGCGTCCAGCAGAGTGTCCCGTCACCCAAGAGAGATCTGTGGTCCAGGCCACTCCACAAGCGCC
 CAAACCCGGCCCGGTGCAGCCGCTGACCGTGCAGGGCCTCCAGCCAGTCCACGTGGCTCAAGAGGTGCAG
 CAGCTCCAGCAGGTGCCCGTCCCACACGTGACTCCAGCCAGGTGCAGTATGTGGAGGGCGGCGATGCCA
 GCTACACGGCCAGTGCCATCCGTTCAGCACCTACTCCTATCCCAGACGCCGCTGTACACGCAGACGGC
 AAGCACCAGTACTACGAGGCCGAGGCACGGCCACCCAGGTGAGCACCAGCCACCTCCAGGGCGGTG
 GCCAGCAGTGGCTCCATGCCATGTACGTGTCCGGCAGCCAGGTGCTGCGCAGCTCCGCCAGCAGTGGG
 CTGGGGCCAGCAACAGCAGCGGAGGTGGTGGCAGTGGTGGTGGCGGGCGGGCGGGAGGCGGCTGGCGG
 GGGTGGCAGTGGCAGCACCCGGAGGCGGGCAGCGGAGCAGGCACCTACGTGATCCAAGCGGCTACATG
 CTGGGCAGTGCCAGCAGTCTTACTCTCACACCACCCGTGCCTCGCCAGCCACGGTCCAGTGGCTCCTGG
 ACAACTATGAGACGGCTGAGGGCGTGAGTCTGCCACGGAGCACCTCTACTGCCACTACTTACTGCACTG
 CCAGGAGCAGAAGCTGGAGCCCGTCAACGCCGCTCCTTCGGCAAGCTCATCCGCTCCGTCTTCATGGGC
 CTGCGAACCCGCGTCTGGGCACCAGGGGCAACTCCAAGTACCACTACTATGGCCTGCGCATCAAGGCCA
 GCTCACCCCTGCTGCGGCTGATGGAGGACCAGCAGCACATGGCCATGCGGGGCCAGCCCTTCTCGCAGAA
 GCAGAGGCTCAAGCCATCCAGAAGATGGAAGGCATGACCAACGGCGTGGCGGTGGGGCAGCAGCCGAGC
 ACGGGGCTGTGCGACATCAGCGCCAGGTGCAGCAGTACCAGCAATTTTGGATGCCTCTCGGAGCCTCC
 CTGACTTCACAGAGCTCGACCTCCAGGGCAAGGTGCTGCCTGAGGGCGTGGGGCCCGGGGACATCAAGC
 TTCCAGGTCTGTACCGGGAACACTGTGAGGCCATTGTCGACGTGATGGTGAACCTGCAGTTCACCCCTG
 GTGGAGACGCTGTGGAAGACCTTCTGGAGGTACAACCTCAGCCAGCCAGTGAGGCGCCACCGCTGGCTG
 TACATGACGAGGCCGAGAAGCGACTGCCAAAGCCATCCTGGTGTCTCTCCAAGTTCGAGCCCGTGTCT
 CCAATGGACCAAGCACTGTGACAACGTGCTGTACCAGGGCCTGGTGGAAATCCTCATTCCCGACGTGCTG
 CGGCCATCCCCAGTGCCTTGACCCAAGCGATCCGGAACCTTCCCAAGAGCCTGGAGAGCTGGCTCACCC
 ACGCCATGGTCAACATCCCCGAGGAGATGCTGCGGGTGAAGTGGCCGCGGCTGGCGCCTTCGCGCAGAC
 ACTGCGGCGTACACGTGCTCAACCACCTGGCGCAGGCGCGCGCTGTGCTGCAGAACACCCGACAG
 ATCAACCAGATGCTGAGCGACCTCAACCGGTGGACTTCGCCAACGTGCAGGAGCAGGCCTCGTGGGTGT
 GCCGCTGCGAGGACCGCTGGTGCAGCGCTGGAGCAGGACTTCAAGGTGACGCTGCAGCAGCAGAACTC
 GCTGGAGCAGTGGGCGGCTGGCTGGACGGCGTGGTGGAGCAGGTGCTCAAGCCCTACCAGGGCAGCGCC
 GGCTTCCCAAGGCCGCAAGCTCTTCTCCTCAAGTGGTCTTCTACAGCTCCATGGTATCCGGGACC
 TGACCCTGCGCAGCGCCGACGTTCCGTTCTTCCACCTCATCCGGCTGCTCTACGACGAGTACATGTA
 CTACCTGATCGAGCACCAGTCCAGCCAGGCCAAGGGCAGACCCCATCGCCGTCATGGGCGAGTTCGCC
 AATCTGGCCACCTCCCTGAACCCCTGGACCCGACAAAGACGAGGAGGAAGAAGAGGAGGAGGAGAGCG
 AGGACGAGCTGCCGAGGACATCTCACTGGCGGCTGGCGGCGAGTACCCGCGCTGGGCCGGAGACCTT
 GGAGCCGCGGCCAAGCTGGCGCGGACTGACGCGCGCGGCTCTTCGTGCAGGCGCTGCCCTCCAGC

ACGCGTACGCGGCGGCTCGAGCAGAAACTCATCTCAGAAGAGGATCTGGCAGCAAATGATATCCTGGATT
 ACAAGGATGACGACGATAAGGTTTAA

Protein Sequence: >RC207872 protein sequence
 Red=Cloning site Green=Tags(s)

```

MATQAYTELQAAPPPSQPPQAPPQAQPQPPPPPPAAPQPPPTAAATPQPQYVTELSQPQQAQPPGG
QKQYVTELPVAPAPSQPTGAPTPSPAPQQYIVVTVSEGAMRASETVSEASPGSTASQTVPTQVVQVQG
TQQRLLVQTSVQAKPGHVSPLQLTNIQVPQQALPTQRLVVQSAAPGSKGGQVSLTVHGTQQVHSPPEQSP
VQANSSSSKTAGAPTGTVPQQLQVHGQVQSVPTQERSVVQATPQAPKPGPVQPLTVQGLQPVHVAQEVQ
LQVQVVPVPHVYSSQVQYVEGGDASYTASAIRSSTYSYPETPLYTQTASTSYEAAAGTATQVSTPATSQAV
ASSGSMMPYVSGSQVAVASSASTGAGASNSSGGGGGGGGGGGGGGGGSGTGSGGAGTYVIQGGYM
LGSASQYSHTTRASPATVQWLLDNYETAEGVSLPRSTLYCHYLLHCQEQLKLEPVNAASFGLIRSVFMG
LRTRRLGTRGNSKYHYGLRIKASSPLRLMEDQQHMAMRGQPFQKQRLKPIQKMEGMTNGVAVGQPS
TGLSDISAQVQQYQFLDASRSLPDFTELDLQGVLPQVGVGPDIKAFQVLYREHCEAIVDMVNLQFTL
VETLWKTFRWYNLSQPSEAPPLAVHDEAEKRLPKAILVLLSKFEPVLQWTKHCDNVLYQGLVEILIPDVL
RPIPSALTAIRNFAKSLESWLTHAMVNIPEMLRVKVAAGAFQTLRRYTSLNHLAQAARAVLQNTAQ
INQMLSDLNRVDFANVQEQASWVCRCDRVRLEQDFKVTLLQQNSLEQWAAWLDGVVSVQLKPYQGSA
GFPKAAKFLLLKWSFYSSMVIDLTLRSAASFGSFHLIRLLYDEYMYLLIEHRVAQAKGETPIAVMGEFA
NLATSLNPLDPKDEEEEEEESEDELQDISLAAGGESPALGPETLEPPAKLARTDARGLFVQALPSS
  
```

TRTRPLEQKLISEEDLAANDILDYKDDDDKV

Chromatograms: https://cdn.origene.com/chromatograms/mk6715_a10.zip

Restriction Sites: SgfI-MluI

Cloning Scheme:

Cloning sites used for ORF Shuttling:



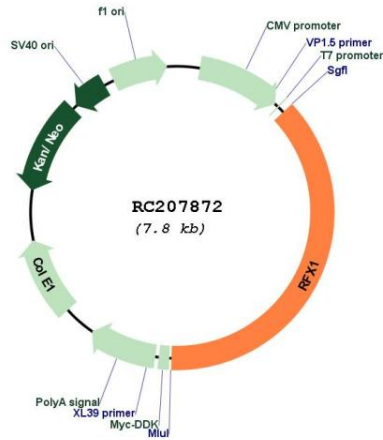
* The last codon before the Stop codon of the ORF

ACCN: NM_002918

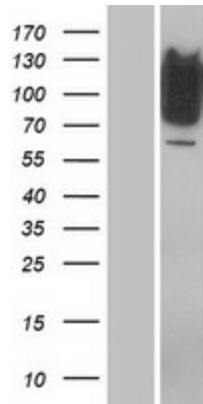
ORF Size: 2937 bp

OTI Disclaimer:	The molecular sequence of this clone aligns with the gene accession number as a point of reference only. However, individual transcript sequences of the same gene can differ through naturally occurring variations (e.g. polymorphisms), each with its own valid existence. This clone is substantially in agreement with the reference, but a complete review of all prevailing variants is recommended prior to use. More info
OTI Annotation:	This clone was engineered to express the complete ORF with an expression tag. Expression varies depending on the nature of the gene.
Components:	The ORF clone is ion-exchange column purified and shipped in a 2D barcoded Matrix tube containing 10ug of transfection-ready, dried plasmid DNA (reconstitute with 100 ul of water).
Reconstitution Method:	<ol style="list-style-type: none">1. Centrifuge at 5,000xg for 5min.2. Carefully open the tube and add 100ul of sterile water to dissolve the DNA.3. Close the tube and incubate for 10 minutes at room temperature.4. Briefly vortex the tube and then do a quick spin (less than 5000xg) to concentrate the liquid at the bottom.5. Store the suspended plasmid at -20°C. The DNA is stable for at least one year from date of shipping when stored at -20°C.
RefSeq:	NM_002918.3 , NP_002909.3
RefSeq Size:	4392 bp
RefSeq ORF:	2940 bp
Locus ID:	5989
UniProt ID:	P22670
Cytogenetics:	19p13.12
Protein Families:	Druggable Genome
MW:	104.7 kDa
Gene Summary:	This gene encodes a member of the regulatory factor X (RFX) family of transcription factors, which are characterized by a winged-helix DNA-binding domain. The encoded transcription factor contains an N-terminal activation domain and a C-terminal repression domain, and may activate or repress target gene expression depending on cellular context. This transcription factor has been shown to regulate a wide variety of genes involved in immunity and cancer, including the MHC class II genes and genes that may be involved in cancer progression. This gene exhibits altered expression in glioblastoma and the autoimmune disease systemic lupus erythematosus (SLE). [provided by RefSeq, Jul 2016]

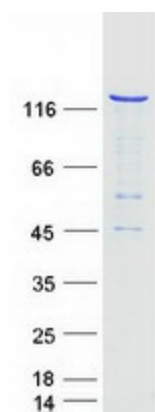
Product images:



Circular map for RC207872



Western blot validation of overexpression lysate (Cat# [LY419021]) using anti-DDK antibody (Cat# [TA50011-100]). Left: Cell lysates from untransfected HEK293T cells; Right: Cell lysates from HEK293T cells transfected with RC207872 using transfection reagent MegaTran 2.0 (Cat# [TT210002]).



Coomassie blue staining of purified RFX1 protein (Cat# [TP307872]). The protein was produced from HEK293T cells transfected with RFX1 cDNA clone (Cat# RC207872) using MegaTran 2.0 (Cat# [TT210002]).