

## Product datasheet for RC207709

### G CSF (CSF3) (NM\_172220) Human Tagged ORF Clone

#### Product data:

**Product Type:** Expression Plasmids  
**Product Name:** G CSF (CSF3) (NM\_172220) Human Tagged ORF Clone  
**Tag:** Myc-DDK  
**Symbol:** G CSF  
**Synonyms:** C17orf33; CSF3OS; GCSF  
**Mammalian Cell Selection:** Neomycin  
**Vector:** pCMV6-Entry (PS100001)  
**E. coli Selection:** Kanamycin (25 ug/mL)  
**ORF Nucleotide Sequence:** >RC207709 ORF sequence  
 Red=Cloning site Blue=ORF Green=Tags(s)

TTTTGTAATACGACTCACTATAGGGCGCCGGGAATTCGTCGACTGGATCCGGTACCGAGGAGATCTGCC  
 GCCCGCATCGCC

ATGTCTCCTGAGCCCGCTCTGTCCCCAGCCCTGCAGCTGCTGTGTGGCACAGTGCCTCTGGACAGTGC  
 AGGAAGCCACCCCTGGGCCCTGCCAGCTCCCTGCCAGAGCTTCTGCTCAAGTGCTTAGAGCAAGT  
 GAGGAAGATCCAGGGCGATGGCGCAGCGCTCCAGGAGAAGCTGTGTGCCACCTACAAGCTGTGCCACCC  
 GAGGAGCTGGTGTGCTCGGACACTCTCTGGGCATCCCCTGGGCTCCCCTGAGCAGCTGCCCCAGCCAGG  
 CCCTGCAGCTGGCAGGCTGCTTGAGCCAACTCCATAGCGGCCTTTTCTCTACCAGGGGCTCCTGCAGGC  
 CCTGGAAGGGATCTCCCCGAGTTGGGTCCACCTTGGACACACTGCAGCTGGAGCTCGCCGACTTTGCC  
 ACCACCATCTGGCAGCAGATGGAAGAACTGGGAATGGCCCTGCCTGCAGCCCACCCAGGGTGCCATGC  
 CGGCCTTCGCCTCTGCTTCCAGCGCCGGGCAGGAGGGGTCTGGTTGCCTCCCATCTGCAGAGCTTCT  
 GGAGGTGTCGTACCGGTTCTACGCCACCTTGCCAGCCC

ACGCGTACGCGGCCGCTCGAGCAGAACTCATCTCAGAAGAGGATCTGGCAGCAAATGATATCCTGGATT  
 ACAAGGATGACGACGATAAGGTTTAA

**Protein Sequence:** >RC207709 protein sequence  
 Red=Cloning site Green=Tags(s)

MSPEPALSPALQLLLWHSALWTVQEATPLGPASSLPQSFLKCLEQVRKIQGDGAALQEKLCAKYKLCHP  
 EELVLLGHSLGIPWAPLSSCPSQALQLAGCLSQLHSGFLYQGLLQALEGISPELGPTLDLQLDVADFA  
 TTIWQMEELGMAPALQPTQGAMPAFASAFQRRAGGVLVASHLQSFLEVSRYRVLRLHAQP

TRTRPLEQKLISEEDLAANDILDYKDDDDKV

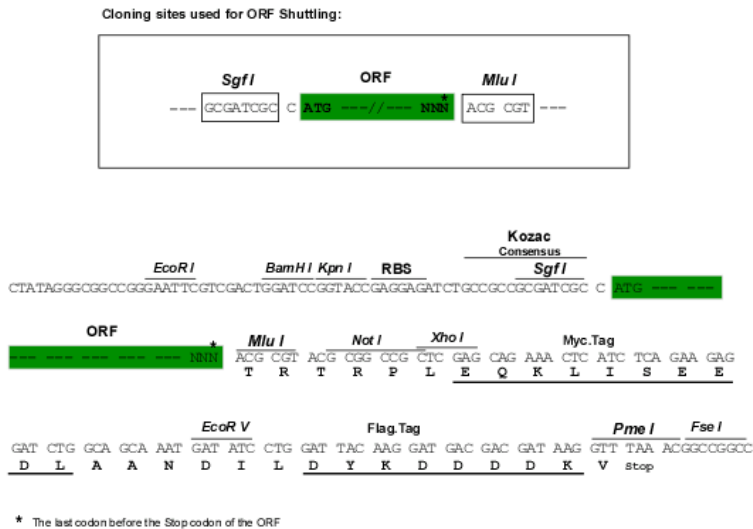


[View online »](#)

Chromatograms: [https://cdn.origene.com/chromatograms/mk6143\\_d01.zip](https://cdn.origene.com/chromatograms/mk6143_d01.zip)

Restriction Sites: SgfI-MluI

Cloning Scheme:



ACCN: NM\_172220

ORF Size: 600 bp

OTI Disclaimer: The molecular sequence of this clone aligns with the gene accession number as a point of reference only. However, individual transcript sequences of the same gene can differ through naturally occurring variations (e.g. polymorphisms), each with its own valid existence. This clone is substantially in agreement with the reference, but a complete review of all prevailing variants is recommended prior to use. [More info](#)

OTI Annotation: This clone was engineered to express the complete ORF with an expression tag. Expression varies depending on the nature of the gene.

Components: The ORF clone is ion-exchange column purified and shipped in a 2D barcoded Matrix tube containing 10ug of transfection-ready, dried plasmid DNA (reconstitute with 100 ul of water).

Reconstitution Method:

1. Centrifuge at 5,000xg for 5min.
2. Carefully open the tube and add 100ul of sterile water to dissolve the DNA.
3. Close the tube and incubate for 10 minutes at room temperature.
4. Briefly vortex the tube and then do a quick spin (less than 5000xg) to concentrate the liquid at the bottom.
5. Store the suspended plasmid at -20°C. The DNA is stable for at least one year from date of shipping when stored at -20°C.

RefSeq: [NM\\_172220.1](#), [NP\\_757374.1](#)

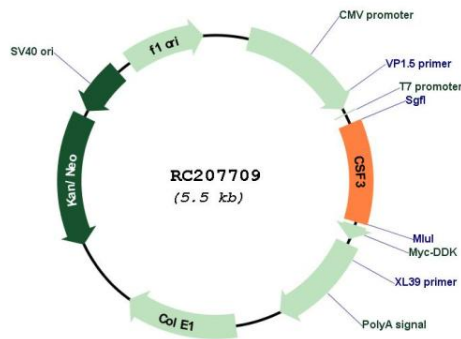
RefSeq Size: 1494 bp

RefSeq ORF: 516 bp

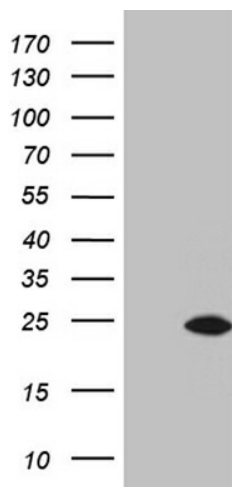
Locus ID: 1440

**UniProt ID:** [P09919](#)  
**Cytogenetics:** 17q21.1  
**Protein Families:** Druggable Genome, ES Cell Differentiation/IPS, Secreted Protein  
**Protein Pathways:** Cytokine-cytokine receptor interaction, Hematopoietic cell lineage, Jak-STAT signaling pathway  
**MW:** 21.5 kDa  
**Gene Summary:** This gene encodes a member of the IL-6 superfamily of cytokines. The encoded cytokine controls the production, differentiation, and function of granulocytes. Granulocytes are a type of white blood cell that are part of the innate immune response. A modified form of this protein is commonly administered to manage chemotherapy-induced neutropenia. Alternatively spliced transcript variants have been described for this gene. [provided by RefSeq, May 2020]

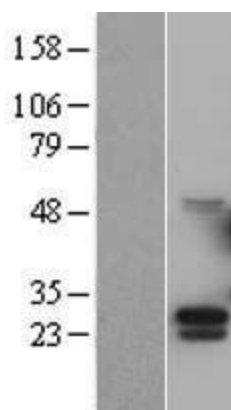
### Product images:



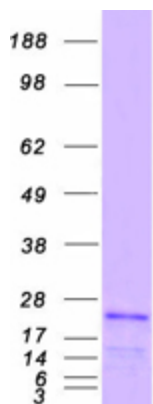
Circular map for RC207709



HEK293T cells were transfected with the pCMV6-ENTRY control (Cat# [PS100001], Left lane) or pCMV6-ENTRY CSF3 (Cat# RC207709, Right lane) cDNA for 48 hrs and lysed. Equivalent amounts of cell lysates (5 ug per lane) were separated by SDS-PAGE and immunoblotted with anti-CSF3 (Cat# [TA810788])(1:2000). Positive lysates [LY403533] (100ug) and [LC403533] (20ug) can be purchased separately from OriGene.



Western blot validation of overexpression lysate (Cat# [LY403533]) using anti-DDK antibody (Cat# [TA50011-100]). Left: Cell lysates from untransfected HEK293T cells; Right: Cell lysates from HEK293T cells transfected with RC207709 using transfection reagent MegaTran 2.0 (Cat# [TT210002]).



Coomassie blue staining of purified CSF3 protein (Cat# [TP307709]). The protein was produced from HEK293T cells transfected with CSF3 cDNA clone (Cat# RC207709) using MegaTran 2.0 (Cat# [TT210002]).