

Product datasheet for **RC207705**

AFAP1L2 (NM_001001936) Human Tagged ORF Clone

Product data:

Product Type:	Expression Plasmids
Product Name:	AFAP1L2 (NM_001001936) Human Tagged ORF Clone
Tag:	Myc-DDK
Symbol:	AFAP1L2
Synonyms:	CTB-1144G6.4; KIAA1914; XB130
Mammalian Cell Selection:	Neomycin
Vector:	pCMV6-Entry (PS100001)
E. coli Selection:	Kanamycin (25 ug/mL)



[View online »](#)

**ORF Nucleotide
Sequence:**

>RC207705 ORF sequence
 Red=Cloning site Blue=ORF Green=Tags(s)

TTTTGTAATACGACTCACTATAGGGCGGCCGGGAATTCGTCGACTGGATCCGGTACCGAGGAGATCTGCC
 GCC**CGCATCGCC**

ATGGAGCGGTACAAAGCCCTGGAACAGCTGCTGACAGAGTTGGATGACTTCTCAAGATTCTTGACCAGG
 AGAACCTGAGCAGCACAGCACTGGTGAAGAAGAGCTGCCTGGCGGAGCTCCTCCGGCTTTACACCAAAG
 CAGCAGCTCTGATGAGGAGTACATTTATATGAACAAAGTGACCATCAACAAGCAACAGAATGCAGAGTCT
 CAAGGCAAAGCGCCTGAGGAGCAGGGCCTGCTACCCAATGGGGAGCCAGCCAGCACTCCTCGGCCCTC
 AGAAGAGCCTTCCAGACCTCCCGCCACCCAAGATGATTCCAGAACGAAACAGCTTGCCATCCAAAGAC
 GGAGTCTCCAGAGGGCTACTATGAAGAGGCTGAGCCATATGACACATCCCTCAATGAGGACGGAGAGGCT
 GTGAGCAGCTCCTACGAGTCTACGATGAAGAGGACGGCAGCAAGGGCAAGTCGGCCCTTACCAGTGCC
 CCTCGCCGGAGGGCCGCATCGAGCTGATGCGTGACGCCCGCATCTGCGCCTTCTGTGGCGCAAGAAGTG
 GCTGGGACAGTGGCCAAGCAGCTCTGTGTCATCAAGGACAACAGGCTTCTGTGCTACAAATCCTCCAAG
 GACCACAGCCCTCAGCTGGACGTGAACCTACTGGGCAGCAGCGTATTCAAGGAGAAGCAAGTCCGGA
 AGAAGGAGCACAAGCTGAAGATCACACCGATGAATGCCGATGTGATTGTGCTGGGCTGCAGAGCAAGGA
 CCAGGCTGAGCAGTGGCTCAGGGTCATCCAGGAAGTGAGCGGCCTGCCTCCGAAGGAGCATCTGAAGGA
 AACAGTACACCCCGGATGCCAGCGCTTAACTGCCAGAAACCAGATATAGCTGAGAAGTACCTGTCCG
 CTTAGAGTATGGGAGCTCCGTGGATGGCCACCCTGAGGTCCAGAAACCAAGAGCTCAAGAAGAAATG
 TTCTGTGGCCTCAAACCTGAGCAACCTAATGAATCTGGGCAGGAAGAAATCCACCTCACTGGAGCCTGTG
 GAGAGGTCCTCGAGACATCCAGTTACCTGAACGTGCTGGTGAACAGCCAGTGAAGTCTCGTGGTGTG
 CTGTGAGGACAATCACCTGCATTCTACCAGGACCCGGAACCGGAGCAAGGTGGCCAGCAACCCCTCAG
 CCTGGTGGGCTGCGAGGTGGTCCAGACCCAGCCCGACCCACCTCTACTCCTTCCGCATCCTCCAAG
 GGCGAGGAGCTGGCCAAGCTTGAGGCCAAGTCTCCGAGGAAATGGGCCACTGGCTGGGTCTCTGCTCT
 CTGAGTCAGGCTCCAAGACAGACCCAGAAGAGTTCACCTACGACTATGTGGATGCCGATAGGGTCTCCTG
 TATTGTGAGTGGCCAAAACTCTCTTACTGATGCAGAGAAAGTTCTCAGAGCCCAACACTTACATC
 GATGGCCTGCCTAGCCAGGACCCAGGAGGAGCTGTATGACGACGTGGACCTGTGAGAGCTCACAGCTG
 CGGTGGAGCTACCGAGGAAGCCACCCCTGTTGCAGATGACCCAAATGAGAGAGAATCTGACCGGGTGA
 CCTGGACCTCACACCTGTCAAGTCTTTCTGCATGGCCCCAGCAGTGCACAGGCCAGGCCTCCTCCCCG
 ACGTTGTCTGCCTGGACAATGCAACTGAGGCCCTCCCGCAGACTCAGGCCAGGTCCACCCAGATG
 AGCCCTGCATAAAGTGTCCAGAGAACCTGGGAGAACAGCAGCTGGAGAGTTTGGAGCCAGAGGATCCTTC
 CCTGAGAAATCACACCGTCAAAATCCAGACGGAACAGCAGAGAATCTCCTTCCCACCGAGCTGCCGGAT
 GCCGTGGTGGCCACCCACCTGGTGCCAGCCACCTGTGAAGGACAGGTTGCGCGTGACCAGTGCAGAGA
 TCAAGCTTGGCAAGAATCGGACAGAAGCTGAGGTGAAGCGGTACACAGAGGAGAAGGAGAGGCTTAAAA
 GAAGAAGGAAGAATCCGGGGCACCTGGCTCAGCTCCGAAAGAGAAACGGGAGCTAAAGGAAACCCTA
 CTGAAATGCACAGACAAGGAAGTCTGGCGAGCCTGGAGCAGAAGCTGAAGGAAATTGACGAGGAGTGCC
 GGGCGAGGAGAGCAGGCGGTGGACCTGGAGCTCAGCATCATGGAGGTGAAGGACAACCTGAAGAAGGC
 TGAGGCAGGGCCTGTGACGTTAGGCACCACCGTGGACACCACCCACCTGGAGAATGTGAGCCCCGCCCC
 AAAGTGTACACCTGCCTCTGCCCCAGACTGTACCCAGTCAACTCTGCAACCACACTCAAGAACAGGC
 CTCTCTCGGTGCTGTCAGGCAAGGCACTGTACTCCAGAAAGCCAAGGAATGGGAGAAGAAAGGAGC
 AAGT

ACGCGTACGCGGCCGCTCGAGCAGAACTCATCTCAGAAGAGGATCTGGCAGCAATGATATCCTGGATT
 ACAAGGATGACGACGATAAGGTTTAA

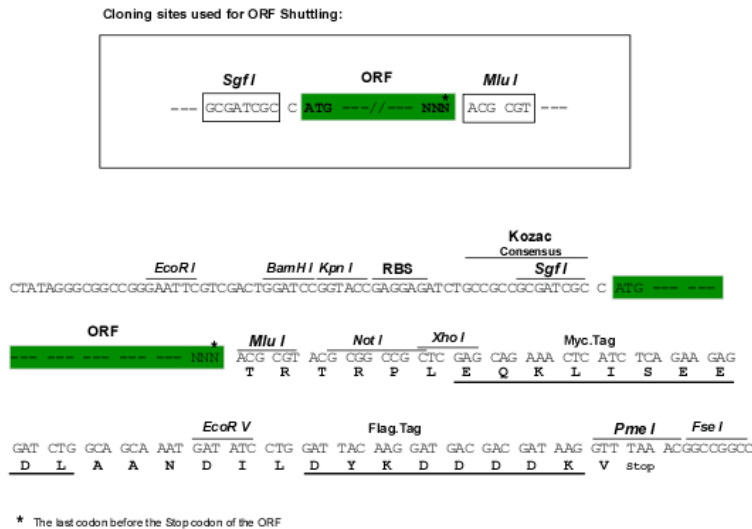
Protein Sequence: >RC207705 protein sequence
Red=Cloning site Green=Tags(s)

MERYKALEQLL TELDDFLKILDQENL SSTALVKKSCLAELLRLYTKSSSSDEEYIYMNKVTINKQNAES
QGKAPEEQGLLPNGEPSQHSSAPQKSLPDLPPPMMIPERKQLAIPKTESPEGYYEEAEPYDTSLNEDGEA
VSSSYESYDEEDGSKGKSAPYQWPSPEAGIELMRDARICAFWRKKWLGQWAKQLCVIKDNRLLCYKSSK
DHSPQLDVNLLGSSVIHKEKQVRKKEHKLKIPMNADVIVLGLQSKDQAEQWLRVIQEVSGLPSEGASEG
NQYTPDAQRFNQCQKPDIAEKYLSASEYGSVVDGHPEVPETKDVKKKCSAGLKLNLMLGRKKSTSLPEV
ERSLETSSYLVNVLVNSQWKSRCVSRDNLHLHFYQDRNRSKVAQQPLSLVGCEVVPDPSPDHLYSFRILHK
GEELAKLEAKSSEEMGHWLGLLLSESGSKTDPEEFYDYVDADRVSCIVSAAKNSLLMQRFSEPNYI
DGLPSQDRQEELYDDVDLSELTAAVEPTEEATPVADDPNERESDRVYLDLTPVKSFLHGPSSAQQAASSP
TLSCLDNATEALPADSGPGPTPDEPCIKCPENLGEQQLESLEPEDPSLRITTVKIQTEQQRISFPPPCPD
AVVATPPGASPPVKDRLRVTSAEIKLGKNRTEAEVKRYTEEKERLEKKKEEIRGHLAQLRKEKRELKETL
LKCTDKEVLASLEQKLKEIDEECRGEESRRVDLELSIMEVKDNLKKAAGPVTLTGTTVDTHLENVSPRP
KAVTPASAPDCTPVNSATTLKNRPLSVVVTGKGTVLQKAKEWEKKGAS

TRTRPLEQKLISEEDLAANDILDYKDDDDKV

Chromatograms: https://cdn.origene.com/chromatograms/mk6552_d12.zip

Restriction Sites: Sgfl-Mlul

Cloning Scheme:


ACCN: NM_001001936

ORF Size: 2454 bp

OTI Disclaimer: The molecular sequence of this clone aligns with the gene accession number as a point of reference only. However, individual transcript sequences of the same gene can differ through naturally occurring variations (e.g. polymorphisms), each with its own valid existence. This clone is substantially in agreement with the reference, but a complete review of all prevailing variants is recommended prior to use. [More info](#)

OTI Annotation: This clone was engineered to express the complete ORF with an expression tag. Expression varies depending on the nature of the gene.

Components: The ORF clone is ion-exchange column purified and shipped in a 2D barcoded Matrix tube containing 10ug of transfection-ready, dried plasmid DNA (reconstitute with 100 ul of water).

Reconstitution Method:

1. Centrifuge at 5,000xg for 5min.
2. Carefully open the tube and add 100ul of sterile water to dissolve the DNA.
3. Close the tube and incubate for 10 minutes at room temperature.
4. Briefly vortex the tube and then do a quick spin (less than 5000xg) to concentrate the liquid at the bottom.
5. Store the suspended plasmid at -20°C. The DNA is stable for at least one year from date of shipping when stored at -20°C.

RefSeq: [NM_001001936.3](#)

RefSeq Size: 4019 bp

RefSeq ORF: 2457 bp

Locus ID: 84632

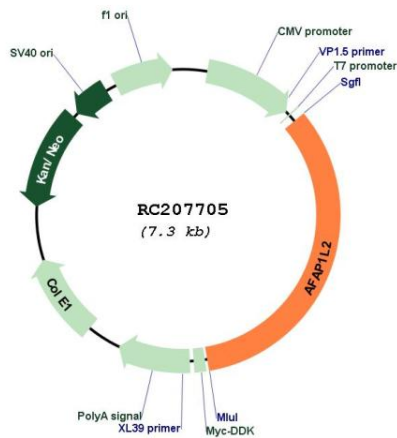
UniProt ID: [Q8N4X5](#)

Cytogenetics: 10q25.3

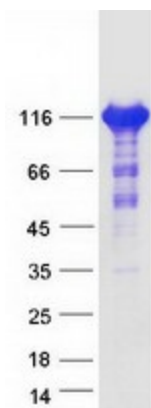
MW: 91.3 kDa

Gene Summary: May play a role in a signaling cascade by enhancing the kinase activity of SRC. Contributes to SRC-regulated transcription activation.[UniProtKB/Swiss-Prot Function]

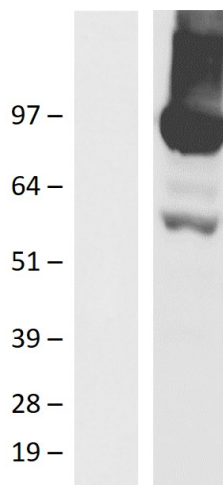
Product images:



Circular map for RC207705



Coomassie blue staining of purified AFAP1L2 protein (Cat# [TP307705]). The protein was produced from HEK293T cells transfected with AFAP1L2 cDNA clone (Cat# RC207705) using MegaTran 2.0 (Cat# [TT210002]).



Western blot validation of overexpression lysate (Cat# [LY424282]) using anti-DDK antibody (Cat# [TA50011-100]). Left: Cell lysates from untransfected HEK293T cells; Right: Cell lysates from HEK293T cells transfected with RC207705 using transfection reagent MegaTran 2.0 (Cat# [TT210002]).