

Product datasheet for RC207588

Dermatopontin (DPT) (NM_001937) Human Tagged ORF Clone

Product data:

Product Type: Expression Plasmids
Product Name: Dermatopontin (DPT) (NM_001937) Human Tagged ORF Clone
Tag: Myc-DDK
Symbol: Dermatopontin
Synonyms: TRAMP
Mammalian Cell Selection: Neomycin
Vector: pCMV6-Entry (PS100001)
E. coli Selection: Kanamycin (25 ug/mL)
ORF Nucleotide Sequence: >RC207588 ORF sequence
 Red=Cloning site Blue=ORF Green=Tags(s)

TTTTGTAATACGACTCACTATAGGGCGCCGGGAATTCGTCGACTGGATCCGGTACCGAGGAGATCTGCC
 GCC**CGATCGCC**

ATGGACCTCAGTCTTCTCTGGGTACTTCTGCCCTAGTCACCATGGCCTGGGGCCAGTATGGCGATTATG
 GATACCCATACCAGCAGTATCATGACTACAGCGATGATGGGTGGGTGAATTTGAACCGGCAAGGCTTCAG
 CTACCAGTGTCCCAGGGCAGGTGATAGTGGCCGTGAGGAGCATCTTCAGCAAGAAGGAAGTTCTGAC
 AGACAATGGAACACGCCTGCATGCCACACCACAGAGCCTCGGGGAACCCACGGAGTCTGGTGGGAGG
 AGATCAACAGGGCTGGCATGGAATGGTACCAGACGTGCTCCAACAATGGGCTGGTGGCAGGATCCAGAG
 CCGCTACTTCGAGTCAGTCTGGATCGGGAGTGGCAGTTTTACTGTTGCTGCTACAGCAAGAGGTGCCCA
 TATTCCTGCTGGCTAACAAATAGAATATCCAGGTCACTATGGTGGAGAAATGGACATGATTTCTACAATT
 ATGATTACTATATCCGAGGAGCAACAACCACTTTCTCTGCAGTGGAAAGGGATCGCCAGTGGAAAGTTCAT
 AATGTGCCGGATGACTGAATACGACTGTGAATTTGCAAATGTT

ACGCGTACGCGGCCGCTCGAGCAGAACTCATCTCAGAAGAGGATCTGGCAGCAAATGATATCCTGGATT
 ACAAGGATGACGACGATAAGGTTTAA

Protein Sequence: >RC207588 protein sequence
 Red=Cloning site Green=Tags(s)

MDLSLLWVLLPLVTMAWGQYGDYGPYQYQYHDYSDDGWVNLNRQGFVSYQCPQGVIVAVRSIFSKKEGSD
 RQWNYACMPTPQSLGEPTECWEEINRAGMEWYQTCNNGLVAGFQSRYPFESVLDREWQFYCCRYSKRCP
 YSCWLTIEYPGHYGEEMDMISYNYDYYIRGATTTFAVERDRQWKFIMCRMTEYDCEFANV

TRTRPLEQKLISEEDLAANDILDYKDDDDKV



[View online »](#)

Chromatograms: https://cdn.origene.com/chromatograms/mk6335_a05.zip

Restriction Sites: Sgfl-MluI

Cloning Scheme:



ACCN: NM_001937

ORF Size: 603 bp

OTI Disclaimer: Due to the inherent nature of this plasmid, standard methods to replicate additional amounts of DNA in *E. coli* are highly likely to result in mutations and/or rearrangements. Therefore, OriGene does not guarantee the capability to replicate this plasmid DNA. Additional amounts of DNA can be purchased from OriGene with batch-specific, full-sequence verification at a reduced cost. Please contact our customer care team at custsupport@origene.com or by calling 301.340.3188 option 3 for pricing and delivery.

The molecular sequence of this clone aligns with the gene accession number as a point of reference only. However, individual transcript sequences of the same gene can differ through naturally occurring variations (e.g. polymorphisms), each with its own valid existence. This clone is substantially in agreement with the reference, but a complete review of all prevailing variants is recommended prior to use. [More info](#)

OTI Annotation: This clone was engineered to express the complete ORF with an expression tag. Expression varies depending on the nature of the gene.

Components: The ORF clone is ion-exchange column purified and shipped in a 2D barcoded Matrix tube containing 10ug of transfection-ready, dried plasmid DNA (reconstitute with 100 ul of water).

Reconstitution Method:

1. Centrifuge at 5,000xg for 5min.
2. Carefully open the tube and add 100ul of sterile water to dissolve the DNA.
3. Close the tube and incubate for 10 minutes at room temperature.
4. Briefly vortex the tube and then do a quick spin (less than 5000xg) to concentrate the liquid at the bottom.
5. Store the suspended plasmid at -20°C. The DNA is stable for at least one year from date of shipping when stored at -20°C.

RefSeq: [NM_001937.5](#)

RefSeq Size: 1749 bp

RefSeq ORF: 606 bp

Locus ID: 1805

UniProt ID: [Q07507](#)

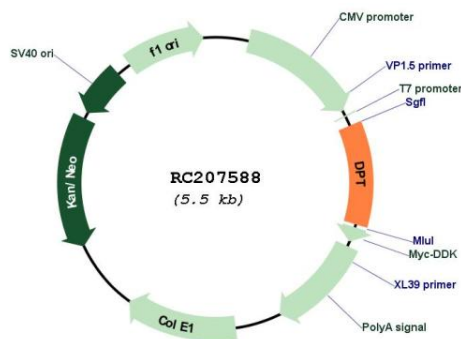
Cytogenetics: 1q24.2

Protein Families: Secreted Protein

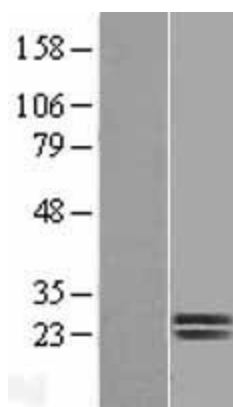
MW: 24 kDa

Gene Summary: Dermatopontin is an extracellular matrix protein with possible functions in cell-matrix interactions and matrix assembly. The protein is found in various tissues and many of its tyrosine residues are sulphated. Dermatopontin is postulated to modify the behavior of TGF-beta through interaction with decorin. [provided by RefSeq, Jul 2008]

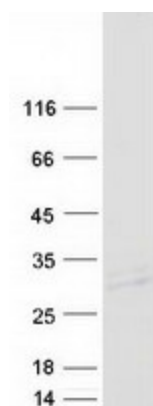
Product images:



Circular map for RC207588



Western blot validation of overexpression lysate (Cat# [LY419639]) using anti-DDK antibody (Cat# [TA50011-100]). Left: Cell lysates from untransfected HEK293T cells; Right: Cell lysates from HEK293T cells transfected with RC207588 using transfection reagent MegaTran 2.0 (Cat# [TT210002]).



Coomassie blue staining of purified DPT protein (Cat# [TP307588]). The protein was produced from HEK293T cells transfected with DPT cDNA clone (Cat# RC207588) using MegaTran 2.0 (Cat# [TT210002]).