

Product datasheet for **RC207487**

CD64 (FCGR1A) (NM_000566) Human Tagged ORF Clone

Product data:

Product Type:	Expression Plasmids
Product Name:	CD64 (FCGR1A) (NM_000566) Human Tagged ORF Clone
Tag:	Myc-DDK
Symbol:	CD64
Synonyms:	CD64; CD64A; FCRI; IGFR1
Mammalian Cell Selection:	Neomycin
Vector:	pCMV6-Entry (PS100001)
E. coli Selection:	Kanamycin (25 ug/mL)
ORF Nucleotide Sequence:	>RC207487 ORF sequence Red=Cloning site Blue=ORF Green=Tags(s)

TTTTGTAATACGACTCACTATAGGGCGCCGGGAATTCGTCGACTGGATCCGGTACCGAGGAGATCTGCC
GCC**CGGATCGCC**

ATGTGGTTCCTTGACAACCTCTGCTCCTTTGGGTTCCAGTTGATGGGCAAGTGGACACCACAAAGGCAGTGA
TCACTTTGCAGCCTCCATGGGTGAGCGTGTCCAAAGAGAAACCGTAACCTTGCATTGTGAGGTGCTCCA
TCTGCCTGGGAGCAGCTCTACACAGTGGTTTCTCAATGGCACAGCCACTCAGACCTCGACCCCGAGCTAC
AGAATCACCTCTGCCAGTGTCAATGACAGTGGTGAATACAGGTGCCAGAGAGGTCTCTCAGGGCGAAGTG
ACCCCATACAGCTGGAATCCACAGAGGCTGGCTACTACTGCAGGTCTCCAGCAGAGTCTTCACGGAAGG
AGAACCTCTGGCCTTGGAGGTGCATGCGTGAAGGATAAGCTGGTGTACAATGTGCTTTACTATCGAAAT
GGCAAAGCCTTTAAGTTTTTCCACTGGAATTCTAACCTCACCTTCTGAAAACCAACATAAGTCACAATG
GCACCTACCATTGCTCAGGCATGGGAAAGCATCGCTACACATCAGCAGGAATATCTGTCAGTGTGAAAGA
GCTATTTCCAGCTCCAGTGTGAATGCATCTGTGACATCCCCACTCCTGGAGGGGAATCTGGTCACCCTG
AGCTGTGAAACAAAGTTGCTCTTGACAGAGGCTGGTTTGACAGTCTTACTTCTCCTTCTACATGGGCAGCA
AGACCTGCGAGGCGAGGAACACATCCTCTGAATACAAATACTAAGTCTAGAAAGAGAAGACTCTGGGT
ATACTGGTGGCAGGCTGCCACAGAGGATGGAATGTCTTAAGCGCAGCCCTGAGTTGGAGCTTCAAGTG
CTTGGCCTCCAGTTACCAACTCTGTCTGGTTTCATGTCTTTTCTATCTGGCAGTGGGAATAATGTTTT
TAGTGAACACTGTTCTCTGGGTGACAATACGTAAGAAGTGAAGAAAGAAAAGTGGGATTTAGAAAT
CTCTTTGGATTCTGGTCTGAGAAGAAGTAATTTCCAGCCTTCAAGAAGACAGACATTTAGAAGAAGAG
CTGAAATGTCAGGAACAAAAGAAGAAGCTGCAGGAAGGGGTGCACCGGAAGGAGCCCGAGGGGCCA
CG

ACGCGTACGCGGCCGCTCGAGCAGAAACTCATCTCAGAAGAGGATCTGGCAGCAATGATATCCTGGATT
ACAAGGATGACGACGATAAGGTTTAA



[View online >](#)

Protein Sequence: >RC207487 protein sequence
Red=Cloning site Green=Tags(s)

MWFLTLLLWVPVDGQVDTTKAVITLQPPWVSVFQEEVTLHCEVLHLPSSSTQWFLNGTATQTSTPSY
 RITSASVNDSGEYRCQRGLSGRSDPIQLEIHRGWLLLQVSSRVFTEGEPLALRCHAWKDKLVYNVLYRN
 GKAFKFFHWNSNLTILKTNISHNGTYHCSGMGKHRYTSAGISVTVKELFPAPVLNASVTSPLLEGNLVTL
 SCETKLLLQRPGLQLYFSFYMGSKTLRGRNTSSEYQILTARREDSGLYWCEAATEDGNVLKRSEPELELQV
 LGLQLPTPVWFHVLFYLAVGIMFLVNTVLWVTIRKELKRKKKWDLEISLDSGHEKKVISSLQEDRHLEEE
 LKCEQKEEQLEQGVHRKEPQGAT

TRTRPLEQKLISEEDLAANDILDYKDDDDKV

Chromatograms: https://cdn.origene.com/chromatograms/mk6136_a04.zip

Restriction Sites: SgfI-MluI

Cloning Scheme:



ACCN: NM_000566

ORF Size: 1122 bp

OTI Disclaimer: The molecular sequence of this clone aligns with the gene accession number as a point of reference only. However, individual transcript sequences of the same gene can differ through naturally occurring variations (e.g. polymorphisms), each with its own valid existence. This clone is substantially in agreement with the reference, but a complete review of all prevailing variants is recommended prior to use. [More info](#)

OTI Annotation: This clone was engineered to express the complete ORF with an expression tag. Expression varies depending on the nature of the gene.

Components: The ORF clone is ion-exchange column purified and shipped in a 2D barcoded Matrix tube containing 10ug of transfection-ready, dried plasmid DNA (reconstitute with 100 ul of water).

Reconstitution Method:

1. Centrifuge at 5,000xg for 5min.
2. Carefully open the tube and add 100ul of sterile water to dissolve the DNA.
3. Close the tube and incubate for 10 minutes at room temperature.
4. Briefly vortex the tube and then do a quick spin (less than 5000xg) to concentrate the liquid at the bottom.
5. Store the suspended plasmid at -20°C. The DNA is stable for at least one year from date of shipping when stored at -20°C.

RefSeq: [NM_000566.2](#), [NP_000557.1](#)

RefSeq Size: 2268 bp

RefSeq ORF: 1125 bp

Locus ID: 2209

UniProt ID: [P12314](#)

Cytogenetics: 1q21.2

Domains: ig, IGc2, IG

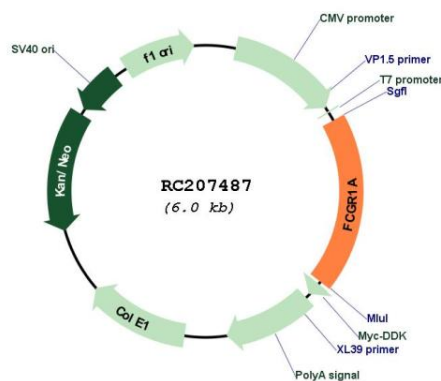
Protein Families: Transmembrane

Protein Pathways: Fc gamma R-mediated phagocytosis, Hematopoietic cell lineage, Systemic lupus erythematosus

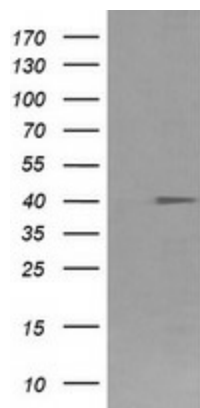
MW: 42.6 kDa

Gene Summary: This gene encodes a protein that plays an important role in the immune response. This protein is a high-affinity Fc-gamma receptor. The gene is one of three related gene family members located on chromosome 1. [provided by RefSeq, Jul 2008]

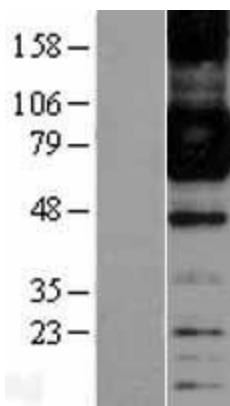
Product images:



Circular map for RC207487



HEK293T cells were transfected with the pCMV6-ENTRY control (Cat# [PS100001], Left lane) or pCMV6-ENTRY FCGR1A (Cat# RC207487, Right lane) cDNA for 48 hrs and lysed. Equivalent amounts of cell lysates (5 ug per lane) were separated by SDS-PAGE and immunoblotted with anti-FCGR1A(Cat# [TA506343]). Positive lysates [LY400193] (100ug) and [LC400193] (20ug) can be purchased separately from OriGene.



Western blot validation of overexpression lysate (Cat# [LY400193]) using anti-DDK antibody (Cat# [TA50011-100]). Left: Cell lysates from untransfected HEK293T cells; Right: Cell lysates from HEK293T cells transfected with RC207487 using transfection reagent MegaTran 2.0 (Cat# [TT210002]).