

Product datasheet for **RC207071**

PDP2 (NM_020786) Human Tagged ORF Clone

Product data:

Product Type:	Expression Plasmids
Product Name:	PDP2 (NM_020786) Human Tagged ORF Clone
Tag:	Myc-DDK
Symbol:	PDP2
Synonyms:	PDPC 2; PPM2B; PPM2C2
Mammalian Cell Selection:	Neomycin
Vector:	pCMV6-Entry (PS100001)
E. coli Selection:	Kanamycin (25 ug/mL)



[View online »](#)

ORF Nucleotide Sequence:

>RC207071 ORF sequence
 Red=Cloning site Blue=ORF Green=Tags(s)

TTTTGTAATACGACTCACTATAGGGCGGCCGGAATTCGTCGACTGGATCCGGTACCGAGGAGATCTGCC
 GCC**CGCATCGCC**

ATGTCAAGTACTGTGTCCTACTGGATCTTAAATCTACAAGAACAGCATTGCCACATTGCAAGGGGTA
 GACGCTTATACTCCAGGTATGTCTCAAATAGGAATAAATTAATAATGGAGGCTCTTTCCCGGTGCCACC
 CACCCTAAACAGTTCCCATGTGGTGGCTTACTCTGTGCAAAGCCTACAGACACACATCAACAGAGGAA
 GATGATTTTCACTTGCAACTCAGCCCTGAGCAGATAAAAGAAGTCTCGAGCTGGCGAGACAACCCACA
 AGATTCTTGACCTTGAAAGCAGAGTCCCAAATTCAGTGTGCGGTTTGAGAGCAACCAGCTGGCTGCCAA
 TCCCCAGTGGAGGACCGCGAGGTGTAGCCTCCTGCCTGCAAACCAATGGACTGATGTTTGGCATCTTC
 GATGGACATGGTGGTATGCATGTGCCAAGCAGTGAAGGAGAGGCTCTTCTACTATGTGGCAGTGTCCC
 TGATGTCCACCAGACCCTGGAGCACATGGAGGGAGCTATGAAAGCATGAAACCCTTGCTGCCATCCT
 GCATTGGCTCAAGCACCAGGGGACAGTATCTACAAGGATGTACATCTGTGCATCTTGACCACCTCCGT
 GTCTATTGGCAGGAAGCTGTTGATTTGCACATGGAATGGGACTAAGCATTGAAGAAGCATTAAATGTACT
 CCTTCCAGAGACTGGATTCTGACATCTCGCTGGAATCCAGGCCCCCTGGAAGATGAGGTGACAAGGAA
 CCTGTCACTCCAGGTTGCTTCTCTGGGCAACAGCTTGCATGGCCCATGTTGATGGAATCACTTGAC
 GTGGCAAATGCTGGTGAAGTGCAGGACCATCCTTGGTGTCCAAGAGGACAATGGCATGTGGTCTTGTCTG
 CCCTTACACGTGACCACAATGCCTGGAACCAGGCCGAGCTGTCCCGGCTAAAGAGGGAGCACCCCTGAGTC
 AGAGGACAGGACGATCATCATGGAGGACAGGCTACTGGCGTCTCATCCCCTGCAGGGCCTTTGGGGAT
 GTTCAGCTGAAGTGGAGTAAAGAGTTGCAGCGCAGCATTCTGGAGAGGGGCTTCAATACCGAGCCCTCA
 ACATTTACCAGTTCACACCCCCACACTACTACACTCCACCCTACCTGACTGCTGAGCCTGAGGTCACATA
 CCACAGGCTGAGGCCCCAGGATAAGTTCTTGTCTGGCCTCAGATGGCCTGTGGGACATGCTGAGCAAT
 GAGGACGTGGTAAGGCTGGTGGTGGGGCACCTGGCTGAGGCAGATTGGCAAGACAGACCTGGCCAGA
 GACCCGCCAATTGGGGCTCATGCAGAGCCTGCTGCTGCAGAGGAAAGCCAGCGGGCTCCACGAGGCTGA
 CCAAAATGCAGCCACGGGCTGATCAGACATGCCATCGGGAACAATGAGTATGGGGAGATGGAGGCAGAG
 CGGCTGGCGGGATGCTGACATTGCCAGAGGACTTGGCGAGGATGTACAGGGATGATCACTGTCAGT
 TGGTGTATTTAACTCAGAATCAATCGGTGCATATTACAAGGGGGT

ACGCGTACGCGGCCGCTCGAGCAGAAACTCATCTCAGAAGAGGATCTGGCAGCAAATGATATCCTGGATT
 ACAAGGATGACGACGATAAGGTTTAA

Protein Sequence:

>RC207071 protein sequence
 Red=Cloning site Green=Tags(s)

MSSTVSYWILNSTRNSIATLQGGRRLYSRYVSNRNKWKWRLF SRVPPTLNSSPCGGFTLCKAYRHTSTEE
 DDFHLQLSPEQINEVLRAGETTHKILDLESRVPNVSVLRFESNQLAANSPVEDRRGVASCLQTNGLMFGIF
 DGHGGHACAQAVSERLFYVAVSLMSHQTLHEMGEAMESMKPLLPILHWLKHGDSIYKDVTSVHLDHLR
 VYWQELLDLHMEMGLSIEEALMYSFQRLDSDISLEIQAPLEDEVTRNLSLQVAFSGATACMAHVDGIHLH
 VANAGDCRAILGVQEDNGMWSCLPLTRDHAWNQAEL SRLKREHPESEDRTIIMEDRLLGVLIPCRAFGD
 VQLKWSKELQRSILERGFNTEALNIYQFTPPHYTTPPYL TAEPEVTYHRLRPQDKFLVLASDGLWMLSN
 EDVVRLVVGHLAEADWHKTDLAQR PANLGLMQSLLLQRKASGLHEADQNAATRLIRHAIGNNEYGEMAE
 RLAAMLTLPEDLARMYRDDITVTVVVFNSESIGAYYKGG

TRTRPLEQKLISEEDLAANDILDYKDDDDKV

Chromatograms:

https://cdn.origene.com/chromatograms/mk6136_a10.zip

Restriction Sites:

Sgfl-Mlul

Cloning Scheme:



ACCN: NM_020786

ORF Size: 1587 bp

OTI Disclaimer: The molecular sequence of this clone aligns with the gene accession number as a point of reference only. However, individual transcript sequences of the same gene can differ through naturally occurring variations (e.g. polymorphisms), each with its own valid existence. This clone is substantially in agreement with the reference, but a complete review of all prevailing variants is recommended prior to use. [More info](#)

OTI Annotation: This clone was engineered to express the complete ORF with an expression tag. Expression varies depending on the nature of the gene.

Components: The ORF clone is ion-exchange column purified and shipped in a 2D barcoded Matrix tube containing 10ug of transfection-ready, dried plasmid DNA (reconstitute with 100 ul of water).

- Reconstitution Method:
1. Centrifuge at 5,000xg for 5min.
 2. Carefully open the tube and add 100ul of sterile water to dissolve the DNA.
 3. Close the tube and incubate for 10 minutes at room temperature.
 4. Briefly vortex the tube and then do a quick spin (less than 5000xg) to concentrate the liquid at the bottom.
 5. Store the suspended plasmid at -20°C. The DNA is stable for at least one year from date of shipping when stored at -20°C.

RefSeq: [NM_020786.4](#)

RefSeq Size: 7042 bp

RefSeq ORF: 1590 bp

Locus ID: 57546

UniProt ID: [Q9P2J9](#)

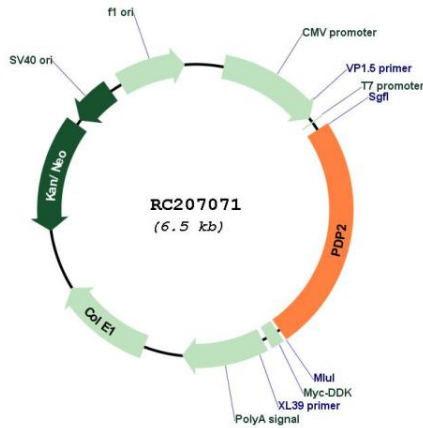
Cytogenetics: 16q22.1

Protein Families: Druggable Genome, Phosphatase

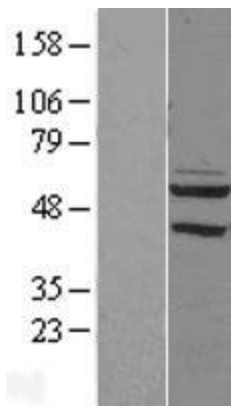
MW: 60 kDa

Gene Summary: This gene is a mitochondrial protein that functions as a phosphatase and is involved in the enzymatic resetting of the pyruvate dehydrogenase complex. Alternative splicing results in multiple transcript variants encoding the same protein. [provided by RefSeq, Aug 2016]

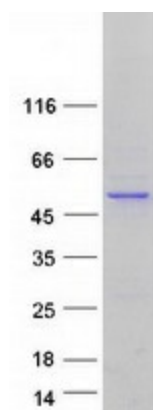
Product images:



Circular map for RC207071



Western blot validation of overexpression lysate (Cat# [LY402805]) using anti-DDK antibody (Cat# [TA50011-100]). Left: Cell lysates from untransfected HEK293T cells; Right: Cell lysates from HEK293T cells transfected with RC207071 using transfection reagent MegaTran 2.0 (Cat# [TT210002]).



Coomassie blue staining of purified PDP2 protein (Cat# [TP307071]). The protein was produced from HEK293T cells transfected with PDP2 cDNA clone (Cat# RC207071) using MegaTran 2.0 (Cat# [TT210002]).