

Product datasheet for **RC207030**

CYP4X1 (NM_178033) Human Tagged ORF Clone

Product data:

Product Type:	Expression Plasmids
Product Name:	CYP4X1 (NM_178033) Human Tagged ORF Clone
Tag:	Myc-DDK
Symbol:	CYP4X1
Synonyms:	CYPIVX1
Mammalian Cell Selection:	Neomycin
Vector:	pCMV6-Entry (PS100001)
E. coli Selection:	Kanamycin (25 ug/mL)



[View online »](#)

ORF Nucleotide Sequence:

>RC207030 ORF sequence
 Red=Cloning site Blue=ORF Green=Tags(s)

TTTTGTAATACGACTCACTATAGGGCGGCCGGAATTCGTCGACTGGATCCGGTACCGAGGAGATCTGCC
 GCC**CGGATCGCC**

ATGGAATTCTCCTGGCTGGAGACGCGCTGGGCGCGCCCTTTTACCTGGCGTTCTGTCTCGCTGGCCC
 TGGGGCTGCTGCAGGCCATTAAGCTGTACTGCGGAGGCAGCGGCTGCTGCGGGACTGCGCCCTTCCC
 AGCGCCCCCACCCTACTGGTTCTTGGGCACCAGAAGTTTATTACAGGATGATAACATGGAGAAGCTTGAG
 GAAATTATTGAAAAATACCCTCGTGCCTTCCCTTCTGGATTGGGCCCTTTCAGGCATTTTTCTGTATCT
 ATGACCCAGACTATGCAAAGACACTTCTGAGCAGAACAGATCCCAAGTCCCAGTACCTGCAGAAATCTC
 ACCTCCACTTCTGAAAAGGACTAGCGGCTCTAGACGGACCCAAGTGGTCCAGCATCGTCGCCTACTA
 ACTCCTGGATTCCATTTAACATCTGAAAGCATAACATTGAGGTGATGGCTATTCTGTGAAAATGATGC
 TGGATAAGTGGGAGAAGATTTGCAGCACTCAGGACACAAGCGTGGAGGTCTATGAGCACATCAACTCGAT
 GTCTCTGGATAAATCATGAAATGCGCTTTCAGCAAGGAGACCAACTGCCAGACAACAGCACCCATGAT
 CCTTATGCAAAAGCCATATTTGAACTCAGCAAAATCATATTTACCGCTTGTACAGTTTGTGTATCACA
 GTGACATAATTTCAAACCTCAGCCCTCAGGGCTACCGCTTCCAGAAGTTAAGCCGAGTGTGAATCAGTA
 CACAGATAACAATAATCCAGGAAAGAAAGAAATCCCTCCAGGCTGGGGTAAAGCAGGATAACACTCCGAAG
 AGGAAGTACCAGGATTTTCTGGATATTGCTCTTCTGCCAAGGATGAAAGTGGTAGCAGCTTCTCAGATA
 TTGATGTACACTCTGAAGTGAGCACATTCTGTTGGCAGGACATGACACCTTGGCAGCAAGCATCTCCTG
 GATCCTTTACTGCCTGGCTCTGAACCTGAGCATCAAGAGAGATGCCGGGAGGAGTCCAGGGCATCCTG
 GGGGATGGGTCTTCTACTTGGGACCACTCCGTTCCAGAGATCTCAGCAAGCCACTTACCTCCGATGG
 CGTGCCGATTGATCTCTGAGTCCCGTCCATTTCCAGAGATCTCAGCAAGCCACTTACCTCCGATGG
 ATGCACATTGCCTGCAGGATCACCGTGGTCTTAGTATTTGGGTCTTACCACAACCTGCTGTCTGG
 AAAAACCCAAAGTCTTTGACCCCTGAGTCTCTCAGGAGAATTCTGATCAGAGACACCCCTATGCCT
 ACTTACCATTCTCAGCTGGATCAAGGAAGTGCATTGGGCAGGAGTTTGCATGATTGAGTTAAAGGTAAC
 CATTGCCTTGATTCTGCTCCACTTCCAGAGTACTCCAGACCCACCAGGCCTTCTACTTTCCCAACCAT
 TTTATCTCAAGCCCAAGATGGGATGTATTTGCACCTGAAGAACTCTCTGAATGT

ACGCGTACGCGGCCGCTCGAGCAGAAACTCATCTCAGAAGAGGATCTGGCAGCAATGATATCTGGATT
 ACAAGGATGACGACGATAAGGTTTAA

Protein Sequence:

>RC207030 protein sequence
 Red=Cloning site Green=Tags(s)

MEFSWLETRWARPFYLAFFVFLALGLLQAIKLYLRRQRLLRDLRPFAPPTHWFLGHQKFIQDDNMEKLE
 EIIIEKYPRAFPFWIGPFQAFCCIYDPDYAKTLLSRDPKSQYLQKFSPPLLKGLAALDGPKWQFQHRLL
 TPGFHFNILKAYIEVMAHSVMMMLDKWEKICSTQDTSVEVYEHINSMSLDIIMKCAF SKETNCQTNSTHD
 PYAKAIFELSKIIIFHRLYSLLYHSDIIFKLSPOGYRFQKLSRVLNQYTDIIQERKKSQAGVKQDNTPK
 RKYQDFLDIVLSAKDESGSSFSDIDVHSEVSTFLLAGHDTLAASISWILYCLALNPEHQERCREEVRGIL
 GDGSSITWDQLGEMSYTTMCIKETCRLIPAVPSISRDLKPLTFPDGCTLPAGITVVL SIWGLHHPAVW
 KNPKVFDPLRFSQENSDQRHPYAYLPFSAGSRNCIGQEFAMIELKVTIALILLHFRVTPDPTRPLTFPNH
 FILKPKNGMYLHLKLLSEC

TRTRPLEQKLISEEDLAANDILDYKDDDDKV

Chromatograms:

https://cdn.origene.com/chromatograms/mk6333_g12.zip

Restriction Sites:

Sgfl-Mlul

Cloning Scheme:


ACCN: NM_178033

ORF Size: 1527 bp

OTI Disclaimer: The molecular sequence of this clone aligns with the gene accession number as a point of reference only. However, individual transcript sequences of the same gene can differ through naturally occurring variations (e.g. polymorphisms), each with its own valid existence. This clone is substantially in agreement with the reference, but a complete review of all prevailing variants is recommended prior to use. [More info](#)

OTI Annotation: This clone was engineered to express the complete ORF with an expression tag. Expression varies depending on the nature of the gene.

Components: The ORF clone is ion-exchange column purified and shipped in a 2D barcoded Matrix tube containing 10ug of transfection-ready, dried plasmid DNA (reconstitute with 100 ul of water).

Reconstitution Method:

1. Centrifuge at 5,000xg for 5min.
2. Carefully open the tube and add 100ul of sterile water to dissolve the DNA.
3. Close the tube and incubate for 10 minutes at room temperature.
4. Briefly vortex the tube and then do a quick spin (less than 5000xg) to concentrate the liquid at the bottom.
5. Store the suspended plasmid at -20°C. The DNA is stable for at least one year from date of shipping when stored at -20°C.

RefSeq: [NM_178033.2](#)

RefSeq Size: 2382 bp

RefSeq ORF: 1530 bp

Locus ID: 260293

UniProt ID: [Q8N118](#)

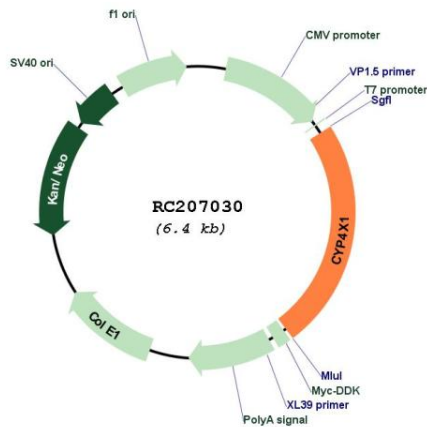
Cytogenetics: 1

Protein Families: Druggable Genome, P450, Transmembrane

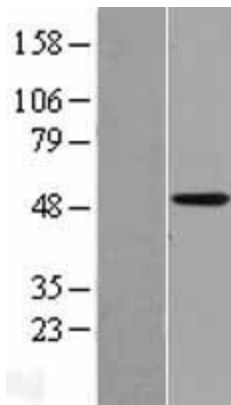
MW: 58.9 kDa

Gene Summary: This gene encodes a member of the cytochrome P450 superfamily of enzymes and is located within a cluster of genes belonging to this superfamily on chromosome 1. The cytochrome P450 proteins are monooxygenases which catalyze many reactions involved in drug metabolism and synthesis of cholesterol, steroids and other lipids. The expression pattern of a similar rat protein suggests that this protein may be involved in neurovascular function in the brain. Alternative splicing results in multiple transcript variants. [provided by RefSeq, Feb 2016]

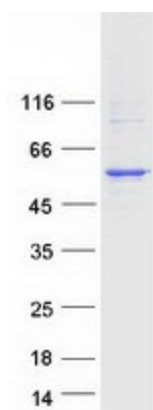
Product images:



Circular map for RC207030



Western blot validation of overexpression lysate (Cat# [LY406024]) using anti-DDK antibody (Cat# [TA50011-100]). Left: Cell lysates from untransfected HEK293T cells; Right: Cell lysates from HEK293T cells transfected with RC207030 using transfection reagent MegaTran 2.0 (Cat# [TT210002]).



Coomassie blue staining of purified CYP4X1 protein (Cat# [TP307030]). The protein was produced from HEK293T cells transfected with CYP4X1 cDNA clone (Cat# RC207030) using MegaTran 2.0 (Cat# [TT210002]).