

## Product datasheet for **RC206931**

### PROCA1 (NM\_152465) Human Tagged ORF Clone

#### Product data:

|                           |   |
|---------------------------|---|
| Product Type:             | Expression Plasmids   |
| Product Name:             | PROCA1 (NM_152465) Human Tagged ORF Clone                         |
| Tag:                      | Myc-DDK   |
| Symbol:                   | PROCA1  |
| Mammalian Cell Selection: | Neomycin  |
| Vector:                   | pCMV6-Entry (PS100001)  |
| E. coli Selection:        | Kanamycin (25 ug/mL)  |
| ORF Nucleotide Sequence:  | >RC206931 ORF sequence<br>Red=Cloning site Blue=ORF Green=Tags(s) |

TTTTGTAATACGACTCACTATAGGGCGGCCGGAATTCGTCGACTGGATCCGGTACCGAGGAGATCTGCC  
GCC**CGATCGCC**

ATGTGGGT**CAGGACGACGCTCACAATTGAAAGATGGACTAAGGAAAAGACCGAGCCCAAGGCCCGCTCGT**  
GGGATGAGAGCAGATGCCGCGGTGACTGCAAGGAGCCTGACAAGTGTCTGGAGACACAAGCAGTGCAC  
TGGGCACATCATCTACCCCTTCGCCTCTGACTGTGTCCGCCACAGCCTGCACCTACACTCTGTCAACCAC  
TGCAACTGTAATTCTAGGCTGAAGGACTCTTCAGAGGATAGCAGCAGCTCCCGGGCGGGGCCAACT  
GCTCCCATGTCTCGAGTCCCCTTGCTTTGAGCTCACACCGAGGAGGAGCATGTGGAGCGATTCCGGTA  
TGCTGGTGCAAAAGCTACAGACCTGTCTGTGGCAGTGATCCACCATCCACTCTACCATGAGTGTGGG  
GCAGATGATCTAAATGAAGAAGAGGAAGAGGAGGAGGAGGAAAGCAAGCCCCATCCCGACACAGGTGG  
GGCCCGCCACCGCTCCCTGACCTAGGCACCAGCATGGCCACTGGTACCCCTGACTCCACAGCGCCCAT  
CACCATCTGGCGCTCTGAGAGCCCCACAGGAAGGGTCAGGGCAGCAAGGTGATCAAGAAGTAAAGAAG  
AAAAAGGAAAAAGAGAAAGACAAGGAGGAGATGGATGAGAAGGCAAGCTGAAGAAAAAGCCAAGAAAG  
GCCAGTTGACTAAGAAGAAAAGCCGGTTAAATGGAGCCTTCCCGCCAGACGTGAGCCGATCATTAAAG  
CGCAAGACAGCTGGCCAGGATGTCCGAGTCCAGCCCAGAAAGCCGGAAGAGCTGGAGAGCGAGGACAGT  
TACAATGGCCGGGGCAGGGAGAACTGTCCAGCGAGGATATTGTGAATCATCATCGCCAGGAAGAGAG  
AGAACACAGTCCAGGCCAAAAGACAGGGCAAAGCCCTCACAAGCCAGGAAGGTAAACAAGAGAAAATC  
TCCCCAGGATCAAACCCCAACCTCAGT

**ACGCGT**ACGCGGCCGCTCGAGCAGAACTCATCTCAGAAGAGGATCTGGCAGCAAATGATATCCTGGATT  
ACAAGGATGACGACGATAAGGTTTAA



[View online »](#)

**Protein Sequence:** >RC206931 protein sequence  
Red=Cloning site Green=Tags(s)

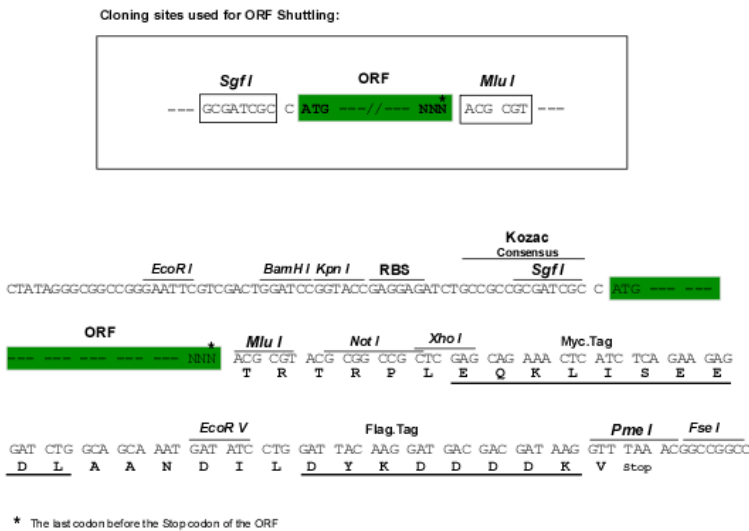
MWVRTTLTIERWTKEKTEPKARSWDESRCRGDCKEPKCCWRHKQCTGHIYYPFASDCVRHSLHLHSVNH  
 CNCNSRLKDSSSESSSRGAGPTCSHVIESPCFELTPEEEHVERFRYGWCKSYRPVSVAVIHHPLYHECG  
 ADDLNEEEEEEEEEESKPPIPTQVGPATASPDLTSMATGTPDSTAPITIWRSSEPTGKGQGSKVIKKVKK  
 KKEKEKDEEMDEKAKLKKKAKKGQLTKKSPVKLEPSPPDVSRSL SARQLARMSESSPESREELESEDS  
 YNGRGQGELSSDIVESSPRKRENTVQAKKTGAKPSQARKVKNRKSPPGNSPNLS

TRTRPLEQKLISEEDLANDILDYKDDDDKV

**Chromatograms:** [https://cdn.origene.com/chromatograms/mk6321\\_e01.zip](https://cdn.origene.com/chromatograms/mk6321_e01.zip)

**Restriction Sites:** Sgfl-MluI

**Cloning Scheme:**



**ACCN:** NM\_152465

**ORF Size:** 1008 bp

**OTI Disclaimer:** The molecular sequence of this clone aligns with the gene accession number as a point of reference only. However, individual transcript sequences of the same gene can differ through naturally occurring variations (e.g. polymorphisms), each with its own valid existence. This clone is substantially in agreement with the reference, but a complete review of all prevailing variants is recommended prior to use. [More info](#)

**OTI Annotation:** This clone was engineered to express the complete ORF with an expression tag. Expression varies depending on the nature of the gene.

**Components:** The ORF clone is ion-exchange column purified and shipped in a 2D barcoded Matrix tube containing 10ug of transfection-ready, dried plasmid DNA (reconstitute with 100 ul of water).

- Reconstitution Method:**
1. Centrifuge at 5,000xg for 5min.
  2. Carefully open the tube and add 100ul of sterile water to dissolve the DNA.
  3. Close the tube and incubate for 10 minutes at room temperature.
  4. Briefly vortex the tube and then do a quick spin (less than 5000xg) to concentrate the liquid at the bottom.
  5. Store the suspended plasmid at -20°C. The DNA is stable for at least one year from date of shipping when stored at -20°C.

**RefSeq:** [NM\\_152465.3](#)

**RefSeq Size:** 1263 bp

**RefSeq ORF:** 1011 bp

**Locus ID:** 147011

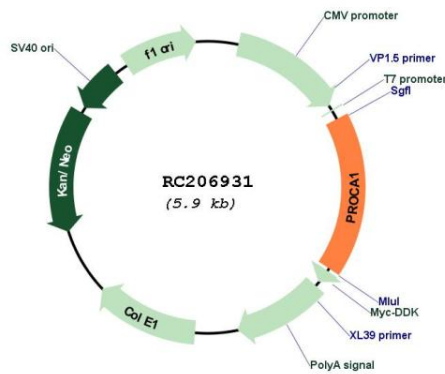
**UniProt ID:** [Q8NCQ7](#)

**Cytogenetics:** 17q11.2

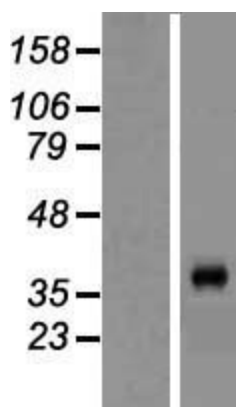
**Protein Families:** Druggable Genome

**MW:** 37.7 kDa

**Product images:**



Circular map for RC206931



Western blot validation of overexpression lysate (Cat# [LY407524]) using anti-DDK antibody (Cat# [TA50011-100]). Left: Cell lysates from untransfected HEK293T cells; Right: Cell lysates from HEK293T cells transfected with RC206931 using transfection reagent MegaTran 2.0 (Cat# [TT210002]).