

Product datasheet for RC206856

SNRPA1 (NM_003090) Human Tagged ORF Clone

Product data:

Product Type:	Expression Plasmids
Product Name:	SNRPA1 (NM_003090) Human Tagged ORF Clone
Tag:	Myc-DDK
Symbol:	SNRPA1
Synonyms:	Lea1; U2A'
Mammalian Cell Selection:	Neomycin
Vector:	pCMV6-Entry (PS100001)
E. coli Selection:	Kanamycin (25 ug/mL)
ORF Nucleotide Sequence:	>RC206856 ORF sequence Red=Cloning site Blue=ORF Green=Tags(s)

TTTTGTAATACGACTCACTATAGGGCGGCCGGAATTCGTCGACTGGATCCGGTACCGAGGAGATCTGCC
GCC**CGATCGCC**

ATGGTCAAGCTGACGGCGGAGCTGATCGAGCAGGCGGCGCAGTACACCAACGCGGTGCGCGACCGGGAGC
TGGACCTCCGGGGTATAAAATTCCTGTCATTGAAAATCTAGGTGCTACGTTAGACCAGTTTGATGCTAT
TGATTTTCTGACAATGAGATCAGGAACTGGATGGTTTTCTTTGTTGAGAAGACTGAAAACATTGTTA
GTGAACAACAACAGAATATGCCGTATAGGTGAGGACTTGATCAGGCTCTGCCCTGTCTGACAGAACTCA
TTCTACCAATAATAGTCTCGTGAAGTGGGTGATCTGGACCCTCTGGCATCTCTCAAATCGCTGACTTA
CCTAAGTATCCTAAGAAATCCGGTAACCAATAAGAAGCATTACAGATTGTATGTGATTTATAAAGTCCG
CAAGTCAGAGTACTGGATTTCCAGAAAAGTAAAAGAGCGTCAGGAAGCAGAGAAAATGTTCAAGG
GCAAACGGGGTGACAGCTTGCAAAGGATATTGCCAGGAGAAGCAAACTTTTAATCCAGGTGCTGGTTT
GCCAACTGACAAAAGAAAGGTGGGCCATCTCCAGGGGATGTAGAAGCAATCAAGAATGCCATAGCAAAT
GCTTCAACTCTGGCTGAAGTGGAGAGGCTGAAGGGTTGCTGCAGTCTGGTCAGATCCCTGGCAGAGAAC
GCAGATCAGGGCCACTGATGATGGTGAAGAAGAGATGGAAGAAGACACAGTCACAAAACGGGTCC

ACGCGTACGCGGCCGCTCGAGCAGAACTCATCTCAGAAGAGGATCTGGCAGCAAATGATATCCTGGATT
ACAAGGATGACGACGATAAGGTTTAA



[View online »](#)

Protein Sequence: >RC206856 protein sequence
Red=Cloning site Green=Tags(s)

MVKLTAE LIEQAAYTN AVRDRELDLRG YKIPV IENLGATLDQFD AIDFSDNEIRKLDGFP LLRRLK TLL
VNNNRICRIG EGLDQALPCL TELIL TNNSLVELGDL DPLASL KSLTYL SILRNPVTNKKHYR LYVIYKVP
QVRV LDFQKVKLKERQEAEKMF KGRGAQLAKDIARRSKTFNPGAGLPTDKKKGGPSPGDVEAIKNAIAN
ASTLAEVERLKG LLLQSGQIPGRERRSGPTDDGEEEMEEDTVTNGS

TRTRPLEQKLISEEDLAANDILDYKDDDDKV

Chromatograms: https://cdn.origene.com/chromatograms/mk6426_h03.zip

Restriction Sites: SgfI-MluI

Cloning Scheme:

Cloning sites used for ORF Shuttling:



* The last codon before the Stop codon of the ORF

ACCN: NM_003090

ORF Size: 765 bp

OTI Disclaimer: The molecular sequence of this clone aligns with the gene accession number as a point of reference only. However, individual transcript sequences of the same gene can differ through naturally occurring variations (e.g. polymorphisms), each with its own valid existence. This clone is substantially in agreement with the reference, but a complete review of all prevailing variants is recommended prior to use. [More info](#)

OTI Annotation: This clone was engineered to express the complete ORF with an expression tag. Expression varies depending on the nature of the gene.

Components: The ORF clone is ion-exchange column purified and shipped in a 2D barcoded Matrix tube containing 10ug of transfection-ready, dried plasmid DNA (reconstitute with 100 ul of water).

Reconstitution Method:

1. Centrifuge at 5,000xg for 5min.
2. Carefully open the tube and add 100ul of sterile water to dissolve the DNA.
3. Close the tube and incubate for 10 minutes at room temperature.
4. Briefly vortex the tube and then do a quick spin (less than 5000xg) to concentrate the liquid at the bottom.
5. Store the suspended plasmid at -20°C. The DNA is stable for at least one year from date of shipping when stored at -20°C.

RefSeq: [NM_003090.4](#)

RefSeq Size: 1068 bp

RefSeq ORF: 768 bp

Locus ID: 6627

UniProt ID: [P09661](#)

Cytogenetics: 15q26.3

Domains: LRR, LRRcap

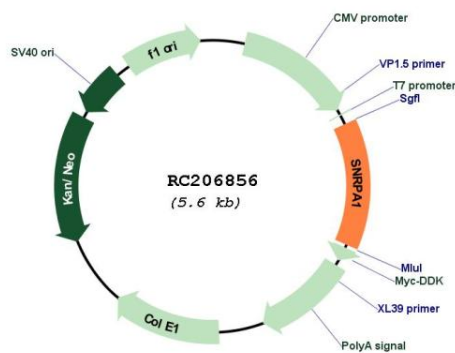
Protein Families: Druggable Genome

Protein Pathways: Spliceosome

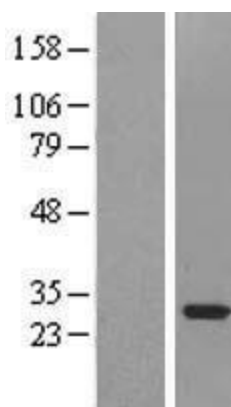
MW: 28.4 kDa

Gene Summary: Involved in pre-mRNA splicing as component of the spliceosome (PubMed:11991638, PubMed:28502770, PubMed:28781166, PubMed:28076346, PubMed:27035939). Associated with sn-RNP U2, where it contributes to the binding of stem loop IV of U2 snRNA (PubMed:9716128, PubMed:27035939).[UniProtKB/Swiss-Prot Function]

Product images:



Circular map for RC206856



Western blot validation of overexpression lysate (Cat# [LY418901]) using anti-DDK antibody (Cat# [TA50011-100]). Left: Cell lysates from untransfected HEK293T cells; Right: Cell lysates from HEK293T cells transfected with RC206856 using transfection reagent MegaTran 2.0 (Cat# [TT210002]).