

Product datasheet for **RC206501**

PADI4 (NM_012387) Human Tagged ORF Clone

Product data:

Product Type:	Expression Plasmids
Product Name:	PADI4 (NM_012387) Human Tagged ORF Clone
Tag:	Myc-DDK
Symbol:	PADI4
Synonyms:	PAD; PAD4; PADI5; PDI4; PDI5
Mammalian Cell Selection:	Neomycin
Vector:	pCMV6-Entry (PS100001)
E. coli Selection:	Kanamycin (25 ug/mL)



[View online »](#)

**ORF Nucleotide
Sequence:**

>RC206501 ORF sequence
 Red=Cloning site Blue=ORF Green=Tags(s)

TTTTGTAATACGACTCACTATAGGGCGGCCGGAATTCGTCGACTGGATCCGGTACCGAGGAGATCTGCC
 GCC**CGGATCGCC**

ATGGCCCAGGGGACATTGATCCGTGTGACCCAGAGCAGCCACCCATGCCGTGTGTGTGCTGGGCACCT
 TGA CT CAGCTTGACATCTGCAGCTCTGCCCTGAGGACTGCACGTCCTTCAGCATCAACGCCTCCCCAGG
 GGTGGTCGTGGATATTGCCACAGCCCTCCAGCCAAGAAGAAATCCACAGGTTCTCCACATGGCCCTG
 GACCTGGGGTAGAGGTGACCTGACGATGAAAGCGGCCAGTGGTAGCACAGGCGACCAGAAGGTTGAGA
 TTTCACTACGGACCAAGACTCCACCAGTCAAAGCTCTACTCTACCTACCGCGGTGGAAATCTCCCT
 GTGCGCAGACATACCCGCACCGGCAAAGTGAAGCCAACCAGAGCTGTGAAAGATCAGAGGACCTGGACC
 TGGGGCCCTTGTGGACAGGGTGCATCCTGCTGGTGAAGTGTGACAGAGACAATCTCGAATCTTCTGCCA
 TGGACTGCGAGGATGATGAAGTCTTGACAGCGAAGACCTGCAGGACATGTCGCTGATGACCTGAGCAC
 GAAGACCCCAAGGACTTCTTCACAAACCATACACTGGTCTCCACGTGGCCAGGCTGAGATGGACAAA
 GTGAGGGTGTTCAGGCCACACGGGGCAAAGTGTCTCCAAGTGCAGCGTAGTCTTGGGTCCCAAGTGGC
 CCTCTACTACCTGATGGTCCCCGGTGGAAAGCACAACATGGACTTCTACGTGGAGGCCCTCGCTTTCCC
 GGACACCGACTTCCCAGGGCTCATTACCCTCACCATCTCCCTGCTGGACACGTCCAACCTGGAGCTCCCC
 GAGGCTGTGGTGTCCAAGACAGCGTGGTCTTCCGCGTGGCGCCCTGGATCATGACCCCAACACCCAGC
 CCCCAGGAGGTGTACGCGTGCAGTATTTTGAAGATGAGGACTTCTGAAGTCAGTGACTACTCTGGC
 CATGAAAGCCAAGTGAAGCTGACCATCTGCCCTGAGGAGGAGAACATGGATGACCAGTGGATGCAGGAT
 GAAATGGAGATCGGCTACATCCAAGCCCCACAAAAACTGCCCGTGGTCTTCGACTCTCAAGGAACA
 GAGGCCTGAAGGAGTTTCCCATCAAACGAGTGTGGTCCAGATTTTGGCTATGTAAGTCAAGGGCCCCA
 AACAGGGGTATCAGTGGACTGGACTCCTTTGGGAACCTGGAAGTGAAGCCCCCAGTCACAGTCAGGGGC
 AAGGAATACCGCTGGGCAGGATTCTTTCGGGGACAGCTGTTATCCAGCAATGACAGCCGCGCAGATGC
 ACCAGGCCCTGCAGGACTTCTCAGTGCCAGCAGGTGCAGGCCCTGTGAAGCTCTATTCTGACTGGCT
 GTCCGTGGGCCACGTGGACGAGTTCCTGAGCTTTGTGCCAGCACCCGACAGGAAGGGCTTCCGGTGTCT
 CTGGCCAGCCCCAGTCTGCTACAAACTGTTCCAGGAGCAGCAGAATGAGGGCCACGGGGAGGCCCTGC
 TGTTCAAGGGATCAAGAAAAAAAAACAGCAGAAAATAAAGAACATTCTGTCAAACAAGACATTGAGAGA
 ACATAATTCATTTGTGGAGAGATGCATCGACTGGAACCGCGAGCTGCTGAAGCGGGAGCTGGCCTGGCC
 GAGAGTGACATCATTGACATCCCGCAGCTTCAAGCTCAAAGAGTTCTCTAAGCGGAAGCTTTTTTCC
 CCAACATGGTGAACATGCTGGTGTAGGGAAGCACCTGGGCATCCCAAGCCCTTCGGGCCCGTCATCAA
 CGGCCGTGCTGCCTGGAGGAGAAGGTGTGTTCCCTGCTGGAGCCACTGGGCCTCCAGTGACCTTCATC
 AACGACTTCTTACCTACCACATCAGGCATGGGAGGTGCACTGCGGCACCAACGTGCGCAGAAAGCCCT
 TCTCCTCAAGTGGTGAACATGGTGCCC

AG**CGGACCG**ACGCGTACGCGGCCGCTCGAGCAGAAACTCATCTCAGAAGAGGATCTGGCAGCAAATGATATCC
 TGGATTACAAGGATGACGACGATAAGGTTTAA

Protein Sequence: >RC206501 protein sequence
Red=Cloning site Green=Tags(s)

```

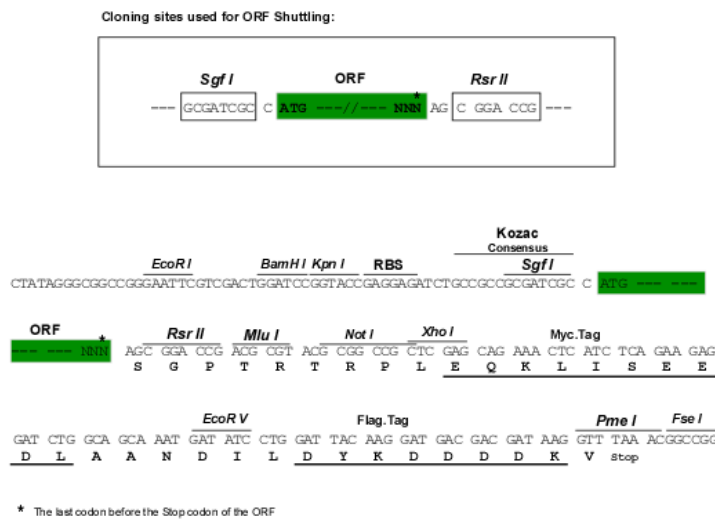
MAQGTLIRVTPEQPTHAVCVLGLTLQLDICSSAPEDCTSFSINASPGVVVDIAHSPPAKKKSTGSSWPL
DPGVEVTLTMKAASGSTGDQKVQISYYGPKTPPVKALLYLTAVEISLCADITRTGKVKPTRAVKDQRTWT
WGPCGGQGAILLVNCDRDNLESSAMDCEDDEVLDSEDLQDMSLMTLSTKTPKDDFFTNHTLVLHVARSEMMDK
VRVFQATRGLSSKCSVVLGPKWPSHYLMVPGGKHNMDFYVEALAFPDTDFPGLITLTIISLLDTSNLELP
EAVVFDQSVVFRVAPWIMTPNTQPPQEVYACSFENEDFLKSVTTLAMKAKCKLTICPEEENMDDQWMQD
EMEIGYIQAPHKTLPVVFDSPRNRGLKEFPKRVMGPDFGYVTRGPQTGGISGLDSFGNLEVSPVTVRG
KEYPLGRILFGDSCYPSNDRQMHQALQDFLSAQQVQAPVKLYSDWLSVGHVDFLSFVPAPDRKGFRL
LASPRSCYKLFQEQQNEGHGEALLFEGIKKKKQKIKNILSNKTLREHNSFVERCIDWNRELLKRELGLA
ESDIIDIPQLFKLKEFSKAEAFFPNMVMNLVLGKHLGIPKPGPVIINGRCCLEEKVCSLLEPLGLQCTFI
NDFFTYHIRHGEVHCGTNVRRKPFSSFKWMMVP
    
```

SGPTRTRPLEQKLI SEEDLAANDILDYKDDDDKV

Chromatograms: https://cdn.origene.com/chromatograms/mk6186_h12.zip

Restriction Sites: SgfI-RsrII

Cloning Scheme:



ACCN: NM_012387

ORF Size: 1989 bp

OTI Disclaimer: The molecular sequence of this clone aligns with the gene accession number as a point of reference only. However, individual transcript sequences of the same gene can differ through naturally occurring variations (e.g. polymorphisms), each with its own valid existence. This clone is substantially in agreement with the reference, but a complete review of all prevailing variants is recommended prior to use. [More info](#)

OTI Annotation: This clone was engineered to express the complete ORF with an expression tag. Expression varies depending on the nature of the gene.

Components: The ORF clone is ion-exchange column purified and shipped in a 2D barcoded Matrix tube containing 10ug of transfection-ready, dried plasmid DNA (reconstitute with 100 ul of water).

Reconstitution Method:

1. Centrifuge at 5,000xg for 5min.
2. Carefully open the tube and add 100ul of sterile water to dissolve the DNA.
3. Close the tube and incubate for 10 minutes at room temperature.
4. Briefly vortex the tube and then do a quick spin (less than 5000xg) to concentrate the liquid at the bottom.
5. Store the suspended plasmid at -20°C. The DNA is stable for at least one year from date of shipping when stored at -20°C.

RefSeq: [NM_012387.3](#)

RefSeq Size: 2265 bp

RefSeq ORF: 1992 bp

Locus ID: 23569

UniProt ID: [Q9UM07](#)

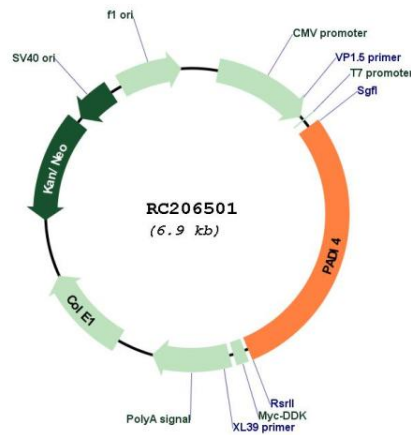
Cytogenetics: 1p36.13

Domains: PAD

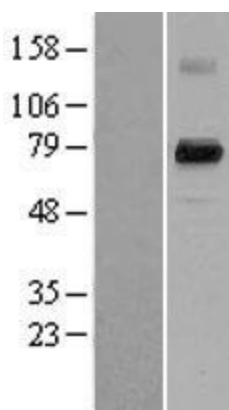
MW: 74.1 kDa

Gene Summary: This gene is a member of a gene family which encodes enzymes responsible for the conversion of arginine residues to citrulline residues. This gene may play a role in granulocyte and macrophage development leading to inflammation and immune response. [provided by RefSeq, Jul 2008]

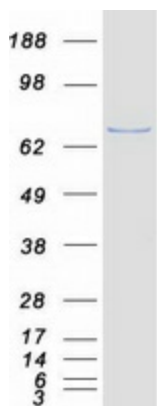
Product images:



Circular map for RC206501



Western blot validation of overexpression lysate (Cat# [LY402202]) using anti-DDK antibody (Cat# [TA50011-100]). Left: Cell lysates from untransfected HEK293T cells; Right: Cell lysates from HEK293T cells transfected with RC206501 using transfection reagent MegaTran 2.0 (Cat# [TT210002]).



Coomassie blue staining of purified PADI4 protein (Cat# [TP306501]). The protein was produced from HEK293T cells transfected with PADI4 cDNA clone (Cat# RC206501) using MegaTran 2.0 (Cat# [TT210002]).