

Product datasheet for **RC206449**

MYL7 (NM_021223) Human Tagged ORF Clone

Product data:

Product Type: Expression Plasmids
Product Name: MYL7 (NM_021223) Human Tagged ORF Clone
Tag: Myc-DDK
Symbol: MYL7
Synonyms: MYL2A; MYLC2A
Mammalian Cell Selection: Neomycin
Vector: pCMV6-Entry (PS100001)
E. coli Selection: Kanamycin (25 ug/mL)
ORF Nucleotide Sequence: >RC206449 ORF sequence
Red=Cloning site Blue=ORF Green=Tags(s)

TTTTGTAATACGACTCACTATAGGGCGGCCGGAATTCGTCGACTGGATCCGGTACCGAGGAGATCTGCC
GCC**CGATCGCC**

ATGGCCAGCAGGAAGCGGGGACCCGGGGCAAGGTGGCAGCCACCAAGCAGGCCAACGTGGTTCTTCCA
ACGTCTTTTCCATGTTTGAACAAGCCCAGATACAGGAGTTCAAAGAAGCCTTCAGCTGTATCGACCAGAA
TCGTGATGGCATCATCTGCAAGGCAGACCTGAGGGAGACCTACTCCAGCTGGGAAGGTGAGTGTCCA
GAGGAGGAGCTGGACGCCATGCTGCAAGAGGGCAAGGGCCCCATCAACTCACCGTCTTCTCACGCTCT
TTGGGGAGAAGCTCAATGGGACAGACCCGAGGAAGCCATCCTGAGTGCCTTCCGATGTTTGACCCAG
CGCAAAGGGGTGGTGAACAAGGATGAGTTCAAGCAGCTTCTCCTGACCCAGGCAGACAAGTTCTCTCCA
GCTGAGGTGGAGCAGATGTTGCGCCTGACACCCATGGACCTGGCGGGGAACATCGACTACAAGTCACTGT
GCTACATCATACCCATGGAGACGAGAAAGAGGAA

ACGCGTACGCGGCCGCTCGAGCAGAACTCATCTCAGAAGAGGATCTGGCAGCAAATGATATCCTGGATT
ACAAGGATGACGACGATAAGGTTTAA

Protein Sequence: >RC206449 protein sequence
Red=Cloning site Green=Tags(s)

MASRKAGTRGKVAATKQAQRGSSNVFSMFEQAQIQEFKEAFSCIDQNRDGIICKADLRETYSQLGKVSVP
EEELDAMLQEGKGPINFTVFLTLFGEKLNKTDPEEAILSAFRMFDPSGKGVVKNKDEFKQLLLTQADKFS
AEVEQMFALTPMDLAGNIDYKSLCYIITHGDEKEE

TRTRPLEQKLISEEDLAANDILDYKDDDDKV

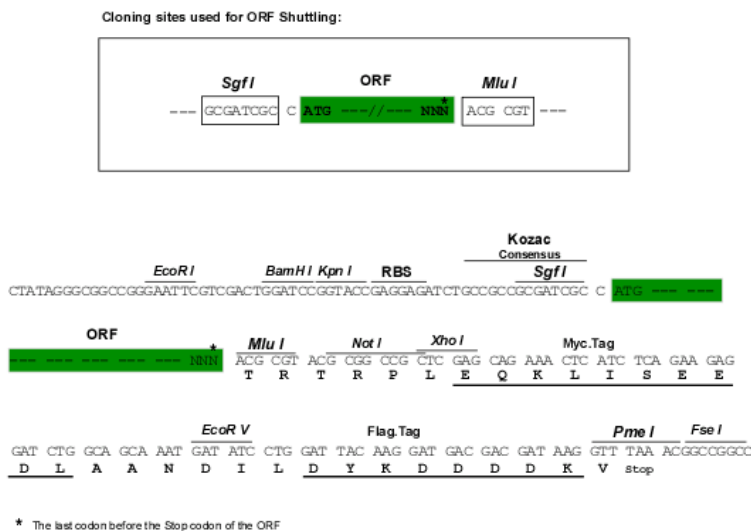
Chromatograms: https://cdn.origene.com/chromatograms/mk6327_g12.zip



[View online »](#)

Restriction Sites: SgfI-MluI

Cloning Scheme:



ACCN: NM_021223

ORF Size: 525 bp

OTI Disclaimer: The molecular sequence of this clone aligns with the gene accession number as a point of reference only. However, individual transcript sequences of the same gene can differ through naturally occurring variations (e.g. polymorphisms), each with its own valid existence. This clone is substantially in agreement with the reference, but a complete review of all prevailing variants is recommended prior to use. [More info](#)

OTI Annotation: This clone was engineered to express the complete ORF with an expression tag. Expression varies depending on the nature of the gene.

Components: The ORF clone is ion-exchange column purified and shipped in a 2D barcoded Matrix tube containing 10ug of transfection-ready, dried plasmid DNA (reconstitute with 100 ul of water).

Reconstitution Method:

1. Centrifuge at 5,000xg for 5min.
2. Carefully open the tube and add 100ul of sterile water to dissolve the DNA.
3. Close the tube and incubate for 10 minutes at room temperature.
4. Briefly vortex the tube and then do a quick spin (less than 5000xg) to concentrate the liquid at the bottom.
5. Store the suspended plasmid at -20°C. The DNA is stable for at least one year from date of shipping when stored at -20°C.

RefSeq: [NM_021223.3](#)

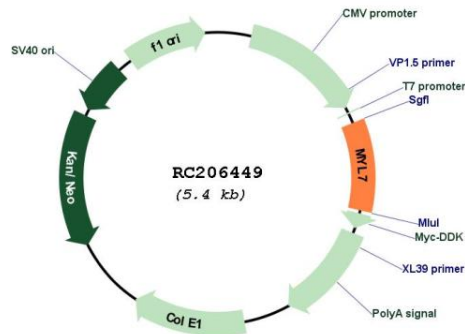
RefSeq Size: 619 bp

RefSeq ORF: 528 bp

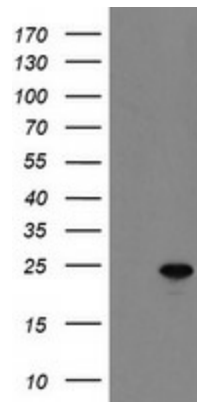
Locus ID: 58498

UniProt ID: [Q01449](#)

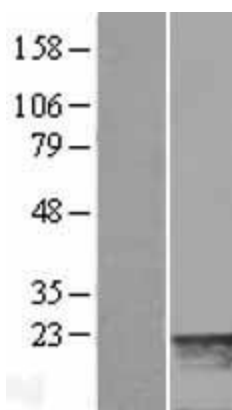
Cytogenetics: 7p13
Protein Families: Druggable Genome
Protein Pathways: Focal adhesion, Leukocyte transendothelial migration, Regulation of actin cytoskeleton, Tight junction
MW: 19.4 kDa

Product images:


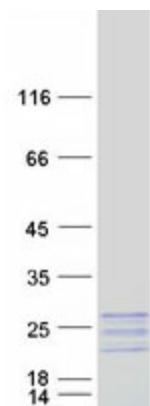
Circular map for RC206449



HEK293T cells were transfected with the pCMV6-ENTRY control (Cat# [PS100001], Left lane) or pCMV6-ENTRY MYL7 (Cat# RC206449, Right lane) cDNA for 48 hrs and lysed. Equivalent amounts of cell lysates (5 ug per lane) were separated by SDS-PAGE and immunoblotted with anti-MYL7 (Cat# [TA800175]). Positive lysates [LY412006] (100ug) and [LC412006] (20ug) can be purchased separately from OriGene.



Western blot validation of overexpression lysate (Cat# [LY412006]) using anti-DDK antibody (Cat# [TA50011-100]). Left: Cell lysates from untransfected HEK293T cells; Right: Cell lysates from HEK293T cells transfected with RC206449 using transfection reagent MegaTran 2.0 (Cat# [TT210002]).



Coomassie blue staining of purified MYL7 protein (Cat# [TP306449]). The protein was produced from HEK293T cells transfected with MYL7 cDNA clone (Cat# RC206449) using MegaTran 2.0 (Cat# [TT210002]).