

Product datasheet for **RC206420**

IL3RA (NM_002183) Human Tagged ORF Clone

Product data:

Product Type:	Expression Plasmids
Product Name:	IL3RA (NM_002183) Human Tagged ORF Clone
Tag:	Myc-DDK
Symbol:	IL3RA
Synonyms:	CD123; hIL-3Ra; IL3R; IL3RAY; IL3RX; IL3RY
Mammalian Cell Selection:	Neomycin
Vector:	pCMV6-Entry (PS100001)
E. coli Selection:	Kanamycin (25 ug/mL)
ORF Nucleotide Sequence:	>RC206420 representing NM_002183 Red=Cloning site Blue=ORF Green=Tags(s)

TTTTGTAATACGACTCACTATAGGGCGGCCGGAATTCGTCGACTGGATCCGGTACCGAGGAGATCTGCC
GCC**CGATCGCC**

ATGGTCTCCTTTGGCTCACGCTGCTCCTGATCGCCCTGCCCTGTCTCCTGCAAACGAAGGAAGATCCAA
ACCCACCAATCACGAACCTAAGGATGAAAGCAAAGGCTCAGCAGTTGACCTGGGACCTTAACAGAAATGT
GACCGATATCGAGTGTGTTAAAGACGCCGACTATTCTATGCCGGCAGTGAACAATAGCTATTGCCAGTTT
GGAGCAATTTCTTATGTGAAGTGACCAACTACACCGTCCGAGTGGCCAACCCACCATTCTCCACGTGGA
TCCTCTTCCCTGAGAACAGTGGGAAGCCTTGGGCAGGTGCGGAGAATCTGACCTGCTGGATTTCATGACGT
GGATTTCTTGAGCTGCAGCTGGGCGGTAGGCCCGGGGCCCCCGGACGTCCAGTACGACTGACTTGT
AACGTTGCCAACAGGCGTCAACAGTACGAGTGTCTTCACTACAAAACGGATGCTCAGGGAACACGTATCG
GGTGTCTGTTTCGATGACATCTCTCGACTCTCCAGCGGTTCTCAAAGTTCCACATCCTGGTGCAGGGCAG
GAGCGCAGCCTTCGGTATCCCCTGCACAGATAAGTTTGTCTGCTTTTTCACAGATTGAGATATTAACCTCA
CCCAACATGACTGCAAAGTGAATAAGACACATTCCTTTATGCACTGGAAAATGAGAAGTCATTTCAATC
GCAAATTCGCTATGAGCTTCAGATACAAAAGAGAATGCAGCCTGTAATCACAGAACAGGTCAGAGACAG
AACCTCCTTCAGCTACTCAATCCTGGAACGTACACAGTACAAAATAAGAGCCCGGAAAGAGTGTATGAA
TTCTTTGAGCGCCTGGAGCACCCCGAGCGTTCGAGTGGCAGCAGGAGGGCGCAAACACACAGTGCCT
GGCGGACGTGCTGTGATCGCGCTGGGGACGCTGCTGGCCCTGGTCTGTGTCTTCGTGATCTGCAGAA
GTATCTGGTGATGCAGAGACTCTTTCCCGCATCCCTCACATGAAAGACCCCATCGGTGACAGCTTCCAA
AACGACAAGCTGGTGGTCTGGGAGGCGGCAAAGCCGGCCTGGAGGAGTGTCTGGTACTGAAGTACAGG
TCGTGCAGAAACT

ACGCGTACGCGGCCGCTCGAGCAGAAACTCATCTCAGAAGAGGATCTGGCAGCAAATGATATCCTGGATT
ACAAGGATGACGACGATAAGGTTTAA



[View online >](#)

Protein Sequence: >RC206420 representing NM_002183
Red=Cloning site Green=Tags(s)

MVLLWL TLLLI ALPCLLQTKEDPNPPITNLRMKAKAQQLT WDLNRNVTDIECVKDADYSMPAVNNSYCQF
 GAISLCEVTNYTVRVANPPFSTWILFPENSGKPWAGAENLTCWIHDVDFLSCSWAVGPGAPADVQYDLYL
 NVANRRQYQECLHYKTD AQGTRIGCRFDDISRLSSGSQSSHILVRGRSAAFGIPCTDKFVVFVFSQIEILTP
 PNMTAKCNKTHSFMHWKMRSHFNKFRYELQIQKRMQPVITEQVRDRTSFQLLNPGTYTVQIRARERVYE
 FLSAWSTPQRFEC DQE EGANTRAWRTSLLLIALGTL LALVCVFVICRRYLVMQRLFPRIPHKDPIGDSFQ
 NDKLVVWEAGKAGLEECLVTEVQVVQKT

TRTRPLEQKLISEEDLAANDILDYKDDDDKV

Chromatograms: https://cdn.origene.com/chromatograms/mg2855_d03.zip

Restriction Sites: SgfI-MluI

Cloning Scheme:



* The last codon before the Stop codon of the ORF

ACCN: NM_002183

ORF Size: 1134 bp

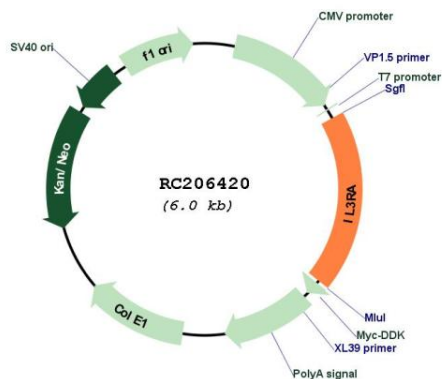
OTI Disclaimer: The molecular sequence of this clone aligns with the gene accession number as a point of reference only. However, individual transcript sequences of the same gene can differ through naturally occurring variations (e.g. polymorphisms), each with its own valid existence. This clone is substantially in agreement with the reference, but a complete review of all prevailing variants is recommended prior to use. [More info](#)

OTI Annotation: This clone was engineered to express the complete ORF with an expression tag. Expression varies depending on the nature of the gene.

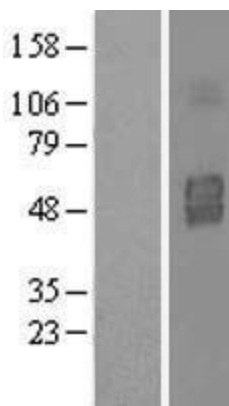
Components: The ORF clone is ion-exchange column purified and shipped in a 2D barcoded Matrix tube containing 10ug of transfection-ready, dried plasmid DNA (reconstitute with 100 ul of water).

Reconstitution Method:	<ol style="list-style-type: none">1. Centrifuge at 5,000xg for 5min.2. Carefully open the tube and add 100ul of sterile water to dissolve the DNA.3. Close the tube and incubate for 10 minutes at room temperature.4. Briefly vortex the tube and then do a quick spin (less than 5000xg) to concentrate the liquid at the bottom.5. Store the suspended plasmid at -20°C. The DNA is stable for at least one year from date of shipping when stored at -20°C.
RefSeq:	NM_002183.4
RefSeq Size:	1726 bp
RefSeq ORF:	1137 bp
Locus ID:	3563
UniProt ID:	P26951
Cytogenetics:	X;Y
Protein Families:	Transmembrane
Protein Pathways:	Apoptosis, Cytokine-cytokine receptor interaction, Hematopoietic cell lineage, Jak-STAT signaling pathway
MW:	43.33 kDa
Gene Summary:	<p>The protein encoded by this gene is an interleukin 3 specific subunit of a heterodimeric cytokine receptor. The receptor is comprised of a ligand specific alpha subunit and a signal transducing beta subunit shared by the receptors for interleukin 3 (IL3), colony stimulating factor 2 (CSF2/GM-CSF), and interleukin 5 (IL5). The binding of this protein to IL3 depends on the beta subunit. The beta subunit is activated by the ligand binding, and is required for the biological activities of IL3. This gene and the gene encoding the colony stimulating factor 2 receptor alpha chain (CSF2RA) form a cytokine receptor gene cluster in a X-Y pseudoautosomal region on chromosomes X or Y. Alternatively spliced transcript variants encoding distinct isoforms have been found. [provided by RefSeq, Jun 2012]</p>

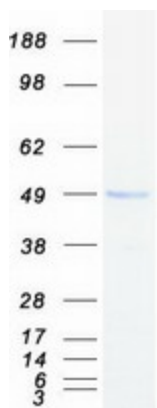
Product images:



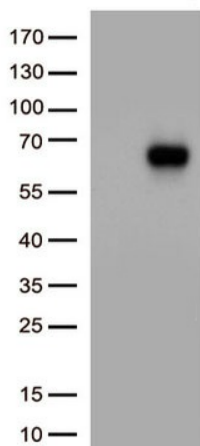
Circular map for RC206420



Western blot validation of overexpression lysate (Cat# [LY419481]) using anti-DDK antibody (Cat# [TA50011-100]). Left: Cell lysates from untransfected HEK293T cells; Right: Cell lysates from HEK293T cells transfected with RC206420 using transfection reagent MegaTran 2.0 (Cat# [TT210002]).



Coomassie blue staining of purified IL3RA protein (Cat# [TP306420]). The protein was produced from HEK293T cells transfected with IL3RA cDNA clone (Cat# RC206420) using MegaTran 2.0 (Cat# [TT210002]).



HEK293T cells were transfected with the pCMV6-ENTRY control (Cat# [PS100001], Left lane) or pCMV6-ENTRY IL3RA (Cat# RC206420, Right lane) cDNA for 48 hrs and lysed. Equivalent amounts of cell lysates (5 ug per lane) were separated by SDS-PAGE and immunoblotted with anti-IL3RA antibody (Cat# [TA813796])(1:1000)