

## Product datasheet for **RC206339**

### **TUBB4B (NM\_006088) Human Tagged ORF Clone**

#### **Product data:**

Product Type:	Expression Plasmids
Product Name:	TUBB4B (NM_006088) Human Tagged ORF Clone
Tag:	Myc-DDK
Symbol:	TUBB4B
Synonyms:	Beta2; LCAEOD; TUBB2; TUBB2C
Mammalian Cell Selection:	Neomycin
Vector:	pCMV6-Entry (PS100001)
E. coli Selection:	Kanamycin (25 ug/mL)



[View online »](#)

**ORF Nucleotide Sequence:**

>RC206339 ORF sequence  
 Red=Cloning site Blue=ORF Green=Tags(s)

TTTTGTAATACGACTCACTATAGGGCGGCCGGGAATTCGTCGACTGGATCCGGTACCGAGGAGATCTGCC  
 GCC**GCGATCGCC**

ATGAGGAAATCGTGCATTGCAGGCCGGCAGTGCGCAACCAATCGGCGCAAGTTTTGGGAGGTGA  
 TCAGCGATGAGCACGGCATCGACCCACGGGCACCTACCACGGGACAGCGACCTGCAGCTGGAACGCAT  
 CAACGTGTACTACAATGAGGCCACCGCGCAAGTACGTGCCCGCGCCGTGCTCGTGGATCTGGAGCCC  
 GGCACCATGGACTCCGTGCGCTCGGGGCCCTTCGGGCAGATCTTCGGCCGGACAACCTCGTTTTCGGT  
 AGAGTGGTCTGGGAACAACGGGCAAGGGGCACTACACAGAAGGCGCGGAGCTGGTGGACTCGGTGCT  
 GGATGTTGTGAGAAAGGAGGCTGAGAGCTGTGACTGCCTGCAGGGTTCCAGCTGACCCACTCCCTGGGT  
 GGGGGACTGGTCTGGGATGGTACCCTCCTCATCAGCAAGTCCGGGAGGAGTACCCAGACAGGATCA  
 TGAACACGTTTAGTGTGGTGCCTTCGCCAAAGTGTGAGACAGTGGTGGAGCCCTACAACGCCACCT  
 CTCAGTCCACAGCTCGTAGAAAACACAGACGAGACCTACTGCATTGATAACGAAGCTCTCTACGACATT  
 TGCTTCAGAACCTAAAGCTGACCACGCCACCTATGGTGACCTGAACAACCTGGTGTCTGCTACCATGA  
 GTGGGGTCAACCTGCCTGCGCTTCCCAGGCCAGCTCAATGCTGACCTGCGGAAGCTGGCTGTGAACAT  
 GGTCCCCTTCCCGGCTGCACTTCTTCATGCCCGGCTTTCGCCACTGACCAGCCGGGGCAGCCAGCAG  
 TACCGGGCGTGACCGTGCCCGAGCTCACCCAGCAGATGTTTGTGATGCCAAGAACATGATGGCTGCCTGCG  
 ACCCCCGCATGGCCGCTACCTGACGGTTGCCCGCGTGTTCAGGGGCCGATGTCATGAAGGAGGTGGA  
 TGAGCAAATGCTTAATGTCCAAAACAAAACAGCAGCTATTTTGTGAGTGGATCCCCAACAAATGTAAA  
 ACGGCTGTCTGTGACATCCCACCTCGGGGGCTAAAAATGTCCGCCACCTCATTGGCAACAGCACGGCCA  
 TCCAGGAGCTGTTCAAGCGCATCTCCGAGCAGTTCACGGCCATGTTCCGGCGCAAGGCCTCTCCTGACTG  
 GTACACGGGCGAGGGCATGGACGAGATGGAGTTACCGAGGCCGAGAGCAACATGAATGACCTGGTGTCC  
 GAGTACCAGCAGTACCAGGATGCCACAGCCGAGGAGGAGGCGAGTTCGAGGAGGAGCTGAGGAGGAGG  
 TGGCC

**ACGCGT**ACGCGGCCGCTCGAGCAGAACTCATCTCAGAAGAGGATCTGGCAGCAAATGATATCCTGGATT  
 ACAAGGATGACGACGATAAGGTTTAA

**Protein Sequence:**

>RC206339 protein sequence  
 Red=Cloning site Green=Tags(s)

MREIVHLQAGQCNGIQIGAKFWEVISDEHGIDPTGTYHGDSLQLERINVYNEATGGKYVPRAVLVDLEP  
 GTMDSVRSQPFQIFRPDNFVFGQSGAGNNWAKGHYTEGAELVDSVLDVVRKEAESDCDCLQGFQLTHSLG  
 GGTGSGMGTLLISKIREEYPDRIMNTFSVVPSPKVSQTVVEPYNATLSVHQLVENTDETYCIDNEALYDI  
 CFRTLKLTPTTYGDLNLLVSATMSGVTTCLRFPGQLNADLRKLA VNMVFPRLHFFMPGFAPLTSRGSQQ  
 YRALTVPELTQQMFDANKMMAACDPRHGRYLTVAAVFRGRMSMKEVDEQMLNVQNKSSYFVEWIPNNVK  
 TAVCDIPRGLKMSATFIGNSTAIQELFKRISEQFTAMFRRKAFLHWYTGEGMDEMEFTEAESNMNDLVS  
 EYQYQDATAEEEEGEFEEEEEEVA

**TR**TRPLEQKLISEEDLAANDILDYKDDDDKV

**Chromatograms:**

[https://cdn.origene.com/chromatograms/mk6197\\_g03.zip](https://cdn.origene.com/chromatograms/mk6197_g03.zip)

**Restriction Sites:**

Sgfl-Mlul

**Cloning Scheme:**


**ACCN:** NM\_006088

**ORF Size:** 1335 bp

**OTI Disclaimer:** The molecular sequence of this clone aligns with the gene accession number as a point of reference only. However, individual transcript sequences of the same gene can differ through naturally occurring variations (e.g. polymorphisms), each with its own valid existence. This clone is substantially in agreement with the reference, but a complete review of all prevailing variants is recommended prior to use. [More info](#)

**OTI Annotation:** This clone was engineered to express the complete ORF with an expression tag. Expression varies depending on the nature of the gene.

**Components:** The ORF clone is ion-exchange column purified and shipped in a 2D barcoded Matrix tube containing 10ug of transfection-ready, dried plasmid DNA (reconstitute with 100 ul of water).

**Reconstitution Method:**

1. Centrifuge at 5,000xg for 5min.
2. Carefully open the tube and add 100ul of sterile water to dissolve the DNA.
3. Close the tube and incubate for 10 minutes at room temperature.
4. Briefly vortex the tube and then do a quick spin (less than 5000xg) to concentrate the liquid at the bottom.
5. Store the suspended plasmid at -20°C. The DNA is stable for at least one year from date of shipping when stored at -20°C.

**RefSeq:** [NM\\_006088.6](#)

**RefSeq Size:** 1591 bp

**RefSeq ORF:** 1338 bp

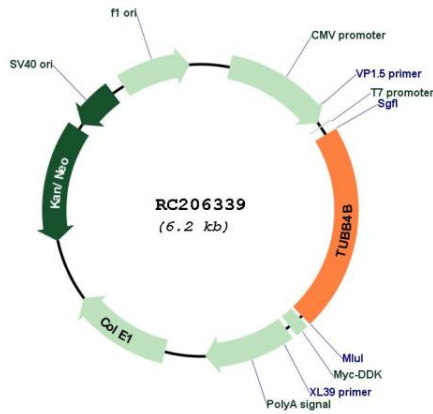
**Locus ID:** 10383

**UniProt ID:** [P68371](#)

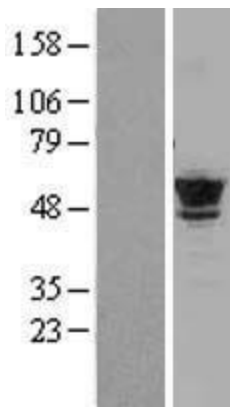
**Cytogenetics:** 9q34.3

**Domains:** tubulin  
**Protein Families:** Druggable Genome  
**Protein Pathways:** Gap junction, Pathogenic Escherichia coli infection  
**MW:** 49.8 kDa  
**Gene Summary:** Tubulin is the major constituent of microtubules. It binds two moles of GTP, one at an exchangeable site on the beta chain and one at a non-exchangeable site on the alpha chain. [UniProtKB/Swiss-Prot Function]

**Product images:**



Circular map for RC206339



Western blot validation of overexpression lysate (Cat# [LY401834]) using anti-DDK antibody (Cat# [TA50011-100]). Left: Cell lysates from untransfected HEK293T cells; Right: Cell lysates from HEK293T cells transfected with RC206339 using transfection reagent MegaTran 2.0 (Cat# [TT210002]).