

## Product datasheet for **RC206279**

### STAM2 (NM\_005843) Human Tagged ORF Clone

#### Product data:

Product Type:	Expression Plasmids
Product Name:	STAM2 (NM_005843) Human Tagged ORF Clone
Tag:	Myc-DDK
Symbol:	STAM2
Synonyms:	Hbp; STAM2A; STAM2B
Mammalian Cell Selection:	Neomycin
Vector:	pCMV6-Entry (PS100001)
E. coli Selection:	Kanamycin (25 ug/mL)



[View online »](#)

**ORF Nucleotide Sequence:**

>RC206279 ORF sequence  
 Red=Cloning site Blue=ORF Green=Tags(s)

TTTTGTAATACGACTCACTATAGGGCGGCCGGAATTCGTCGACTGGATCCGGTACCGAGGAGATCTGCC  
 GCC**GCGATCGCC**

ATGCCTTTGTTACCCGCCAACCCCTTCGAGCAAGACGTGGAAAAAGCCACGAATGAGTACAACACTACAG  
 AAGATTGGAGTCTTATTATGGACATATGTGACAAAGTTGGAAGTACTCCTAATGGAGCGAAAGATTGCCT  
 AAAAGCCATAATGAAAAGGGTAAATCATAAGGTTCCACATGTTGCTCTGCAAGCACTAATCTTCTTGGG  
 GCTTGTGTGGCAAAGTGTGAAAGATATTTCAATTTAGAAGTATGTTCCCGTGATTTTGAACAGAAGTAC  
 GTGCTGTGATTAATAAAGGCACATCCTAAAGTATGTGAAAACTGAAATCTTTAATGGTGGAGTGGTC  
 AGAAGAATTTCAGAAGGACCCCTCAGTTTGTGATATCTGCAACTATTAATCTATGAAAGAAGAAGGA  
 ATTACTTTTCTCCAGCAGGTTCTCAGACTGTCTCAGCTGCTGCCAAGAATGGTACGTCATCGAACAAAA  
 ACAAGAGGATGAAGACATAGCTAAAGCTATTGAATTATCGCTGCAAGAACAGAAACAGCAACACACAGA  
 AACAAAATCCTTATATCCATCTTCAGAAATTCAGTTAAATAATAAGGTTGCACGAAAGTGAAGCTTTA  
 TATGATTTTGAAGCTGTTGAGGACAATGAACTCACCTTTAAACATGGTGAATAATTATTGTTTTGGATG  
 ACAGTGATGCCAATTGGTGGAAAGGAGAAAAATCACAGAGGAATAGGACTTTTCCCATCCAATTTGTAAAC  
 AACTAATTTAAACATAGAGACTGAGGCAGCGGCTGTGGACAAATTGAATGTAATTGATGATGTGGAG  
 GAAATTAAGAAATCAGAGCCTGAGCCTGTTTATATAGATGAGGATAAGATGGATAGAGCCCTGCAGGTAC  
 TTCAGAGTATAGATCCAACAGATTCAAACCCAGACTCCCAAGACCTTTTGGATTTAGAAGATATCTGCCA  
 ACAGATGGGTCCAATGATAGATGAAAACTTGAAGAAATTGATAGGAAGCATTGAGAATTGTCTGAATTG  
 AATGTTAAAGTCTGGAAGCTCTGGAATATATAACAAATTGGTGAATGAAGCACCAGTGTACTCAGTCT  
 ATCAAAGCTCCACCCTCCAGCACATTACCCACTGCATCATCTGGGGTTCCAATGCAGACATATCCAGT  
 TCAATCACATGGTGGAAACTATATGGGTACAGCATTACCAAGTAACTGTTGCCCAAAGCTATAGCCTA  
 GGACCCGATCAAATTGGTCCACTGAGATCTCTGCCTCCAATGTGAATTCCTCAGTGACAGCACAGCCTG  
 CTCAAACCTCATATTTAAGCACTGGACAAGACTGTTTCCAATCCTACTTATATGAACCAGAACTCTAA  
 CCTACAGTCACTACTGGTACAACCTGTTACACACAGCAAATGGGGATGTCTGTGGATATGTCATCTTAT  
 CAGAACACTACTTCCAATTTGCCTCAACTGGCAGGCTTCCGGTGACAGTTCAGCTCATCCAGTTGCAC  
 AGCAGCACACAAATTACCATCAGCAGCCTCTCCTT

**ACGCGT**ACGCGGCCGCTCGAGCAGAAACTCATCTCAGAAGAGGATCTGGCAGCAAATGATATCCTGGATT  
 ACAAGGATGACGACGATAAGGTTTAA

**Protein Sequence:**

>RC206279 protein sequence  
 Red=Cloning site Green=Tags(s)

MPLFTANPFEQDVEKATNEYNTTEDWSLIMDICKVSTPNAGKDKLKAIMKRVNHKVPHVALQALTLG  
 ACVANCGKIFHLEVCSRDFATEVRAVIKKAHPKVCEKLSLMVEWSEEFQKDPQFSLISATIKSMKEEG  
 ITFPPAGSQTVSAANKNGTSSNKNKEDEDIAKAIELSLQEQQHTETKSLYPSSEIQLNNKVARKVRAL  
 YDFAVEDNELTFKHGEIIVLDDSDANWWKGENHRGIGLFPSNFVTTNLNIETAAAVIDKLVNIDDDVE  
 EIKKSEPEPVYIDEDKMDRALQVLQSIDPTDSKPDSQDLLDLEDICQMGPMIDEKLEEIDRKHSELSEL  
 NVKYLEALELYNKLVNEAPVYSVSKLHPPAHYPPASSGVPMQTYPVQSHGGNYMGQSIHQVTVASYSL  
 GPDQIGPLRSLPPNVNSSVTAQPAQTSYLSGQDQTVSNPTYMNQNSNLQSATGTTAYTQQMGMSVDMSSY  
 QNTTSNLPQLAGFPVTVPAHPVAQQHTNYHQPLL

**TR**TRPLEQKLISEEDLAANDILDYKDDDDKV

**Chromatograms:**

[https://cdn.origene.com/chromatograms/mk6139\\_b10.zip](https://cdn.origene.com/chromatograms/mk6139_b10.zip)

**Restriction Sites:**

Sgfl-MluI

**Cloning Scheme:**


**ACCN:** NM\_005843

**ORF Size:** 1575 bp

**OTI Disclaimer:** The molecular sequence of this clone aligns with the gene accession number as a point of reference only. However, individual transcript sequences of the same gene can differ through naturally occurring variations (e.g. polymorphisms), each with its own valid existence. This clone is substantially in agreement with the reference, but a complete review of all prevailing variants is recommended prior to use. [More info](#)

**OTI Annotation:** This clone was engineered to express the complete ORF with an expression tag. Expression varies depending on the nature of the gene.

**Components:** The ORF clone is ion-exchange column purified and shipped in a 2D barcoded Matrix tube containing 10ug of transfection-ready, dried plasmid DNA (reconstitute with 100 ul of water).

**Reconstitution Method:**

1. Centrifuge at 5,000xg for 5min.
2. Carefully open the tube and add 100ul of sterile water to dissolve the DNA.
3. Close the tube and incubate for 10 minutes at room temperature.
4. Briefly vortex the tube and then do a quick spin (less than 5000xg) to concentrate the liquid at the bottom.
5. Store the suspended plasmid at -20°C. The DNA is stable for at least one year from date of shipping when stored at -20°C.

**RefSeq:** [NM\\_005843.6](#)

**RefSeq Size:** 5701 bp

**RefSeq ORF:** 1578 bp

**Locus ID:** 10254

**UniProt ID:** [O75886](#)

**Cytogenetics:** 2q23.3

**Domains:** SH3, VHS, UIM

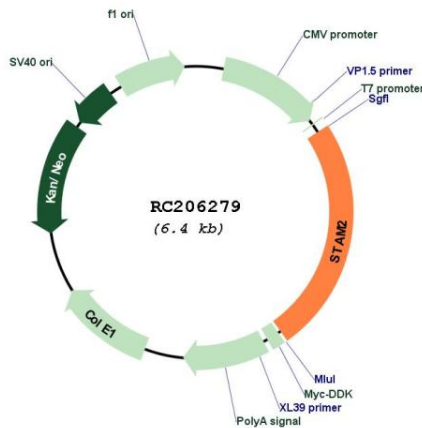
**Protein Pathways:** Endocytosis, Jak-STAT signaling pathway

**MW:** 58.2 kDa

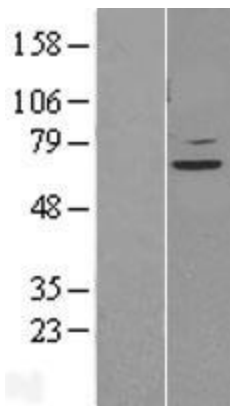
**Gene Summary:**

The protein encoded by this gene is closely related to STAM, an adaptor protein involved in the downstream signaling of cytokine receptors, both of which contain a SH3 domain and the immunoreceptor tyrosine-based activation motif (ITAM). Similar to STAM, this protein acts downstream of JAK kinases, and is phosphorylated in response to cytokine stimulation. This protein and STAM thus are thought to exhibit compensatory effects on the signaling pathway downstream of JAK kinases upon cytokine stimulation. [provided by RefSeq, Jul 2008]

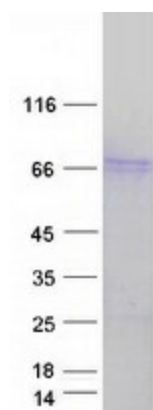
**Product images:**



Circular map for RC206279



Western blot validation of overexpression lysate (Cat# [LY401773]) using anti-DDK antibody (Cat# [TA50011-100]). Left: Cell lysates from untransfected HEK293T cells; Right: Cell lysates from HEK293T cells transfected with RC206279 using transfection reagent MegaTran 2.0 (Cat# [TT210002]).



Coomassie blue staining of purified STAM2 protein (Cat# [TP306279]). The protein was produced from HEK293T cells transfected with STAM2 cDNA clone (Cat# RC206279) using MegaTran 2.0 (Cat# [TT210002]).