

Product datasheet for **RC206267**

SOCS5 (NM_144949) Human Tagged ORF Clone

Product data:

Product Type:	Expression Plasmids
Product Name:	SOCS5 (NM_144949) Human Tagged ORF Clone
Tag:	Myc-DDK
Symbol:	SOCS5
Synonyms:	CIS6; Cish5; CISH6; SOCS-5
Mammalian Cell Selection:	Neomycin
Vector:	pCMV6-Entry (PS100001)
E. coli Selection:	Kanamycin (25 ug/mL)



[View online »](#)

ORF Nucleotide Sequence:

>RC206267 ORF sequence
 Red=Cloning site Blue=ORF Green=Tags(s)

TTTTGTAATACGACTCACTATAGGGCGGCCGGAATTCGTCGACTGGATCCGGTACCGAGGAGATCTGCC
 GCC**CGGATCGCC**

ATGGATAAAGTGGAAAAATGTGGAATAACTTCAAATACAGGTGTCAGAATCTCTTCGGTCATGAGGGAG
 GAAGCCGTAGTAAAAATGTGGACATGAACCTCAACAGATGTTTGTCTGTCAAAGAGAAAAACATCAGCAT
 AGGAGACTCAACTCCTCAGCAACAAAGCAGTCCCTTAAGAGAAAAATTGCCTTACAACCTGGGATTAAGC
 CCTTCGAAGAATTCTTCAAGGAGAAATCAAATTTGTGCCACAGAAATCCCTCAAATTTGTTGAAATAAGCA
 TCGAAAAGGATAATGATTCTTGTGTACGCCAGGAACAAGACTTGCACGAAGAGATTCTACTCTCGACA
 TGCTCCATGGGGTGGGAAGAAAAACATTCCTGTTCTACAAGACCCAGAGTTCATTGGATGCTGATAAA
 AAGTTTGGTAGAACTCGAAGTGGACTTCAAAGGAGAGAGAGGCGCTACGGCGTAAGTTCTGTACACGACA
 TGGACAGTGTTCAGCAGAAGTGTAGGAAGTCGCTCTCTAAGACAGAGGTTGCAGGATACTGTGGGCTT
 GTGTTTTCCCATGAGAATTACAGCAAGCAGTCAAAGCCTCTCTTTCCAATAAAAGAAAAATCCATCTC
 TCTGAATTAATGCTTGAGAAATGCCCTTTCTCTGCTGGCTCAGATTTAGCCCAAAAATGGCATTGATTA
 AACAGCATACAGCTCCTGTGAGCCACATTCAACATTTTTTATACATTTGATCCATCTTTGGTTTCTAC
 AGAAGATGAAGAAGATAGGCTTAGAGAGAGAAGGCGGCTTAGTATTGAAGAAGGGTTGATCCCCCTCCC
 AATGCACAAATACATACATTTGAAGCTACTGCACAGGTTAATCCATTATATAAACTGGGACCAAAATTAG
 CTCCTGGAATGACTGAAATAAGTGGGACAGTTTCTGCAATTCACAAGCTAATTGTGACTCGGAAGAGGA
 TACAACCCCTGTGTTTGCAGTACGGAGGCAGAAGCAGCGTCAGATATCTGGAGACAGCCATACCCAT
 GTTAGCAGACAGGGAGCTTGGAAAGTCCACACACAGATTGATTACATACACTGCCTCGTGCCTGATTTGC
 TTCAAATTACAGGGAATCCCTGTTACTGGGAGTGATGGACCGTTATGAAGCAGAAGCCCTTCTCGAAGG
 GAAACCTGAAGGCACGTTTTTGTCTCAGGACTCTGCGCAAGAGGACTACCTCTTCTCTGTGAGCTTCCGC
 CGCTACAACAGATCCCTGCATGCCCGAATTGAGCAGTGAATCACAACCTTATGTTTCGACGCCCATGACC
 CGTGTGATTTCACTCCTCCACTGTAACGGGACTTTTAGAACATTATAAAGATCCCAGTTCGTGCATGTT
 TTTTGAACCATTGCTTACTATATCACTAAATATGACTTCCCTTTTAGCCTGCAGTATATCTGTCGCGCG
 GTAATCTGCAGGTGACTACGTATGATGGAATTGATGGGCTCCCTCTACCTCAATGTTACAGGATTTTT
 TAAAGAGTATCATTATAAACAAAAAGTTAGAGTTCGCTGGTTGGAACGAGAACCAGTCAAGGCAAAG

ACGCGTACGCGGCCGCTCGAGCAGAAACTCATCTCAGAAGAGGATCTGGCAGCAAATGATATCCTGGATT
 ACAAGGATGACGACGATAAGGTTTAA

Protein Sequence:

>RC206267 protein sequence
 Red=Cloning site Green=Tags(s)

MDKVGKMWNNFKYRCQNLFGHEGGRSENVDMNSNRCLSVKEKNISIGDSTPQQQSSPLRENIALQLGLS
 PSKNSSRRNQNCATEIPQIVEISIEKDNDCVTPGTRLARRDSYSRHAPWGGKKKHSCSTKTQSSLDADK
 KFGRTSRGLQRRERRYGVSSVHDMDSVSSRTVGSRSRQRLQDTVGLCFPMRTYSKQSKPLFSNKRKIHL
 SELMLEKCPFPAGSDLAQKWHLIKQHTAPVSPHSTFFDTFDPSTLSTEDDEEDRLRERRRLSIEEGVDP
 NAQIHTFEATAQVNPLYKLGPKLAPGMTEISGDSSAIPQANCDSEEDTTTLCQSRQKQRIISGDSHTH
 VSRQGAWKVHTQIDYIHCLVPDLLQITGNPCYWGVMRYEAEALLEGKPEGTFLLRDSAQEDYLFVSFR
 RYNRSLHARIEQWNHNSFDAHDPCVHSSVTGLLEHYKDPSSCMFFPELLTISLNMTPFSLQYICRA
 VICRCTTYDGIDGLPLPSMLQDFLKEYHYKQKVRVRLEREPVKAK

TRTRPLEQKLISEEDLAANDILDYKDDDDKV

Chromatograms:

https://cdn.origene.com/chromatograms/mk6534_d07.zip

Restriction Sites:

Sgfl-MluI

Cloning Scheme:


ACCN: NM_144949

ORF Size: 1608 bp

OTI Disclaimer: The molecular sequence of this clone aligns with the gene accession number as a point of reference only. However, individual transcript sequences of the same gene can differ through naturally occurring variations (e.g. polymorphisms), each with its own valid existence. This clone is substantially in agreement with the reference, but a complete review of all prevailing variants is recommended prior to use. [More info](#)

OTI Annotation: This clone was engineered to express the complete ORF with an expression tag. Expression varies depending on the nature of the gene.

Components: The ORF clone is ion-exchange column purified and shipped in a 2D barcoded Matrix tube containing 10ug of transfection-ready, dried plasmid DNA (reconstitute with 100 ul of water).

- Reconstitution Method:**
1. Centrifuge at 5,000xg for 5min.
 2. Carefully open the tube and add 100ul of sterile water to dissolve the DNA.
 3. Close the tube and incubate for 10 minutes at room temperature.
 4. Briefly vortex the tube and then do a quick spin (less than 5000xg) to concentrate the liquid at the bottom.
 5. Store the suspended plasmid at -20°C. The DNA is stable for at least one year from date of shipping when stored at -20°C.

RefSeq: [NM_144949.3](#)

RefSeq Size: 4510 bp

RefSeq ORF: 1611 bp

Locus ID: 9655

UniProt ID: [O75159](#)

Cytogenetics: 2p21

Domains: SH2, SOCS

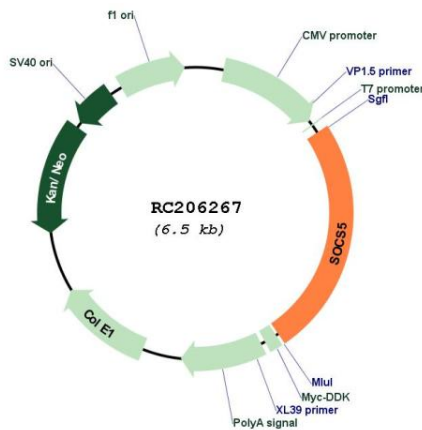
Protein Families: Druggable Genome

Protein Pathways: Jak-STAT signaling pathway

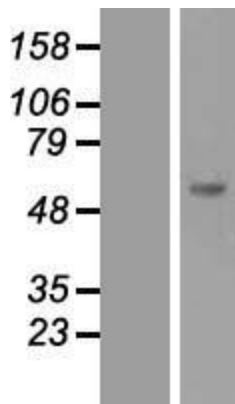
MW: 61.2 kDa

Gene Summary: The protein encoded by this gene contains a SH2 domain and a SOCS BOX domain. The protein thus belongs to the suppressor of cytokine signaling (SOCS) family, also known as STAT-induced STAT inhibitor (SSI) protein family. SOCS family members are known to be cytokine-inducible negative regulators of cytokine signaling. The specific function of this protein has not yet been determined. Two alternatively spliced transcript variants encoding an identical protein have been reported. [provided by RefSeq, Jul 2008]

Product images:



Circular map for RC206267



Western blot validation of overexpression lysate (Cat# [LY408097]) using anti-DDK antibody (Cat# [TA50011-100]). Left: Cell lysates from untransfected HEK293T cells; Right: Cell lysates from HEK293T cells transfected with RC206267 using transfection reagent MegaTran 2.0 (Cat# [TT210002]).