

Product datasheet for RC206255

AMBRA1 (NM_017749) Human Tagged ORF Clone

Product data:

Product Type:	Expression Plasmids
Product Name:	AMBRA1 (NM_017749) Human Tagged ORF Clone
Tag:	Myc-DDK
Symbol:	AMBRA1
Synonyms:	DCAF3; WDR94
Mammalian Cell Selection:	Neomycin
Vector:	pCMV6-Entry (PS100001)
E. coli Selection:	Kanamycin (25 ug/mL)
ORF Nucleotide Sequence:	>RC206255 ORF sequence Red=Cloning site Blue=ORF Green=Tags(s)

TTTTGTAATACGACTCACTATAGGGCGGCCGGAATTCGTCGACTGGATCCGGTACCGAGGAGATCTGCC
GCC**CGATCGCC**

ATGAAGTTGTCCAGAAAAGAATGCTGTCCGGATACTCTGGGGCGGAGAACGGGGTGCTCGGGCCATGG
GAGCTCAGCGGCTTCTGCAGGAGCTGGTAGAGGATAAAACCCGGTGGATGAAATGGGAGGGCAAGAGAGT
AGAAGTCCGGATAGTCCACGCTCTACCTTCTTATTGGCCTTCAGCCAGACAGGACTCTTTAGCCTCC
ACCCATGTGAACCATAATATCTATATTACGGAGGTGAAGACTGGCAAGTGTGTTCCATTCCCTGATTGGAC
ACCGCCGTAATCCATGGTGTGCTACTTTTCATCCACCATCTCAGGCCTTATTGCTTCTGGCTGCCTAGA
TGGGGAGGTTAGGATTTGGGATTTACACGGTGGCAGTGAAGCTGGTTCACAGATAGCAACAATGCCATT
GCCTCCCTGGCTTCCACCCTACGGCTCAGCTCCTGCTGATTGCCACTGCCAATGAGATCCACTTCTGGG
ACTGGAGTCGACGGGAACCCCTTGTGTGGTGAAGACAGCTAGTGAGATGGAACGGGTCCGTCTGGTGAG
ATTTGATCCACTTGGACACTACTTACTCACAGCAATTGTTAACCCCTCTAATCAACAGGGTGATGACGAA
CCAGAGATCCCCATAGATGGAACAGAATTATCCCACTACCGTCAGCGTGCCCTCTGCAATCACAGCCAG
TTCGCCGACGCCTCTCCTCCACAATTTCTGCACATGCTGTCTCCCGCTCTTCTGGCATCCAGACCGA
GCCCTTCCATCCCCGGAGCAGGCCTCGTCAACGCAGCAGGACCAGGGCCTCTGAACCGGCCGCTGCC
TTCAGTACAGTCCAGAGCAGCACTGCCGCAACACGCTCCGCAACCTCAGTCTGGTCTTACCCGCCGCT
CTTTGGGAGGGCCTCTGTCTAGCCACCCTTAGGTATCACCGAGAAATAGCTCCTGGGTTGACAGGATC
TGAGTGGACCCGGACGTAAGTCTGACTGTAAGTCCCGCTCTGAGGCGGAATCCATGCCCGCCGAGAAC
AGTGCCTCTTCGGTGAGTTTGTGTCTGTGCTGAGACAGCAGGAAGGTGGCTCTCAGGCATCTGTGTACA
CTTCAGCCACAGAAGGGAGGGTTTTCCGGCATCAGGGTTGGCAACTGAGTCAGATGGAGGGAATGGCTC
CAGCCAAAACAACCTCGGGCAGCATTGCCATGAGCTTCAGTGTGACCTGAGACGCTTCTTTCTGGAGTAT
GACCGGCTTCAGGAGCTGGATCAGAGCCTGAGTGGGGAAGCTCCCAGACCCAACAGGCCAGGAAATGC
TCAACAATAACATTGAATCTGAGAGGCCAGGCCCTTCCCACCAGCCACCCACACAGCAGTGAAGACAA
CTCCAACCTGTCCGTGGCCACCTGAATCGCTGCTGCTGCCACAATCTCCTGACCTTCAACAACGAT



[View online »](#)

ACCCTGCGCTGGGAAAGAACCACACCTAACTACTCCTCTGGCGAGGCTAGTTCCTCTTGGCAGGTCCCCA
GCTCCTTTGAGAGTGTGCCATCAAGTGGCAGCCAGTTGCCACCTCTCGAGCGGACTGAGGGCCAAACGCC
CAGCTCCAGCAGGCTGGAGTTGAGCAGCTCTGCTAGTCCGAGGAGGAGAGGACTGTGGGGTGGCCTTT
AACCAGGAGACAGGCCACTGGGAAAGAATTTACACCCAGTCCAGCAGATCTGGAAGTGTGTACAGGAGG
CCTTACATCAGGATATGCCTGAGGAGAGCTCTGAGGAGGATCACTCAGGAGGAGGCTGTGGAATCTTC
CCTCATTTCATTATCCCCTTATGATGGAGCAGGATCCAGAGAGCACCCAAATTTACCCAGACCCAGCGAGA
TTATCTCCTGCTGCATACTACGCCCAGAGGATGATCCAGTATCTCTCACGGAGAGACAGTATTCGCCAGC
GCTCCATGCGCTACCAACAGAACCCTCTCCGTTCTTCCACCTCCTCCTTCTCAGACAACCAGGGTCC
ATCAGTAGAGGGAACCGACTTGGAAATTTGAGGACTTTGAGGACAATGGTACAGATCCAGGCACCGAGCT
CCACGCAATGCCCGATGTCTGCACCTTCGCTTGGACGCTTTGTCCAAAGGCGTTTCTTGTCTGCTGAGT
ACTTGCCTTATGCTGGGATTTTTCATGAACGTGGACAGCCTGGCTTGGCTACTACTCTTCTGTAAACAG
GGTCTGGCAGGGCAGTGATCGGTGATGGACAGTCTGCTGTGGCCAGTAACATTGCCAATACTACCTAC
CGGCTCCAGTGGTGGGACTTCACTAAGTTTGACCTCCCTGAAATCAGTAATGCTCCGTGAATGTGCTGG
TGCAGAACTGCAAGATCTACAATGATGCCAGCTGTGACATTTCTGCAGATGGCCAGCTCCTGGCAGCTTT
CATCCCCAGCAGCCAGAGGGCTTCTGATGAAGGCATCCTGGCAGTGTACTCCCTGGCCCCCATAAC
CTGGGCGAAATGCTCTACACCAAGCGATTTGGTCCCAATGCCATTTCCGGTGAAGCTGTCCCAATGGGCA
GATATGTAATGGTGGGCTTGGCCTCACGAAGGATCCTGCTGCACCCCTCCACAGAGCACATGGTGGCCCA
GGTCTTACGGCTGCAACAGGCCATGGTGGAGAGACCTCCATGAGGAGAGTTTTCAACGTCTTTATCCC
ATGCTGCGGACAGCGGAGACATGTCAGTATCAACTCTGCCGTTGGCTGCCTGAGCCAGGGCTTGGCT
TGGCCTATGGTACTAACAAAGGAGACCTGGTGTCTGCCGACCAGAGGCCTTAACTCTGGTGTGAGTA
CTACTGGGACCAGCTGACGAGACGGTCTTCACTGTCCATTCCACAGCAGGAGCAGCGAGCGGCCTGGA
ACCAGCAGAGCCACATGGAGGACAGACAGAGACATGGGGCTGATGAATGCCATTGGGCTTACGCCCCGGA
ACCTGCCACCTCAGTGACATCTCAGGGCACCGAGACTTGGCCCTTCACTGCAGAATGCCGAAACACA
GACTGAGAGGGAGGTGCCGGAGCCAGGGACAGCCCTCAGGTCTGGTGAAGGTGAGGGTTCAGAGTAT
GGTGCCAGTGGAGAAGATGCGCTCAGCAGGATCCAGAGGCTGATGGCGGAGGGCGGCATGACAGCCGTGG
TGCAGCGGAGCAGAGCACCACCATGGCCTCCATGGGCGGCTTCGGCAACAACATCATCGTCAGCCACCG
CATTACCCGAGCTCTCAGACGGGCACTGAACCTGGTGGCGCCACACCTCCTCAGCCAGCCCTCACC
TCTCGGGACTGCTCCCAGAGGCCGGGCAACTGGCAGAGCGAGGCCTAAGCCCCGGACAGCTTCTGGG
ACCAGCCTGGTACCCCTGGGCGGGAGCCAACCCAGCCAACCTGCCCTCTCCTCCCTGTCCCCATTCC
TGTTTCCCTTCCCAGCGCTGAGGGACCAACCGTCCACTGCGAGTTGACCAATAACAACCACCTTCTGGAT
GGTGGCAGCAGCAGGGGGACGCTGCAGGCCCTAGGGGAGAACCACGGAACAGG

ACGCGTACGCGGCGCTCGAGCAGAACTCATCTCAGAAGAGGATCTGGCAGCAAATGATATCCTGGATT
ACAAGGATGACGACGATAAGGTTTAA

Protein Sequence: >RC206255 protein sequence
 Red=Cloning site Green=Tags(s)

```

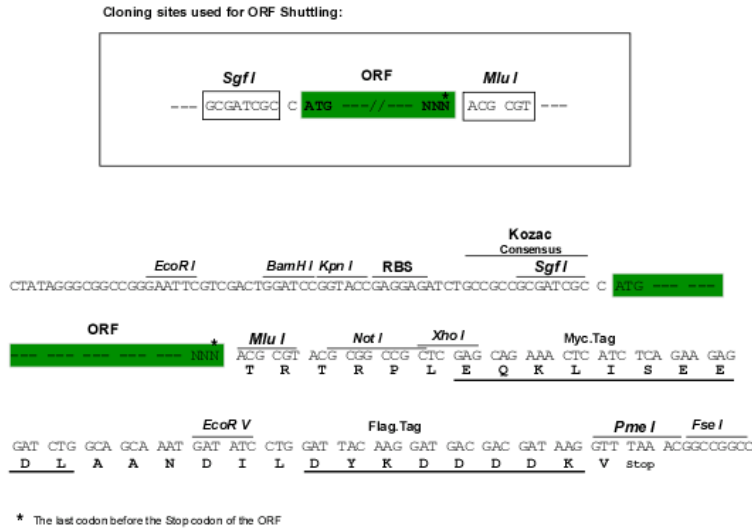
MKVVPEKNAVRILWGRERGARAMGAQRLLQELVEDKTRWMKWEQKRVLPDSRSTFLLAFSPDRLLAS
THVNHNIYITEVKTGKCVHSLIGHRRTPWCVTFHPTISGLIASGCLDGEVRIWDLHGGSESWFTDSNNAI
ASLAFHPTAQLLLIATANEIHFWDWSRREPFVAVKTASEMVRVLRVFDPLGHYLLTAIVNPSNQGDDE
PEIPIDGTELSHYRQRALLQSQPVRRTPLLHNFLHMLSSRSSGIQTEPFHPPEQASSTQQDQGLLRPSA
FSTVQSSTAGNTRLRNLGLPTRRSLGGPLSSHPSRYHREIAPGLTGSEWTRTVLSLNSRSEAESMPPT
SASSVSLLSVLRQQEGGSQASVYTSATEGRGFPASGLATESDGGNGSSQNNSGSIRHELQCDLRRFFLEY
DRLQELDQSLSGEAPQTQQAQEMLNNNIESERPGPSHQPTPHSSENNNLNRGHLNRCRACHNLLTFNND
TLRWERTTPNYSSGEASSWQVPSSFESVPSGSQLPPLERTEGQTPSSSRLELSSASPEERTVGVAF
NQETGHWERIYQSSRSGTVSQEALHQDMPEESSEEDSLRRRLLESSLISLSRYDGAGSREHPIYDPPAR
LSPAAYYAQRMIQYLSRRDSIRQSMRYQQNRLRSSTSSSSDNQGPSVEGTDLEFEDFEDNGDRSRHRA
PRNARMSAPSLGRFVPRRFLPEYLPYAGIFHERGQPLATHSSVNRVLGAVIGDQSAVANSIANTTY
RLQWDFTKFDLPEISNASVNVLVQNCKIYNDASCDISADGQLAAFIPSSQRFPGDEGILAVYSLAPHN
LGEMLYTKRFGPNAISVLSLPMGRYVMVGLASRRILLHPSTEHMVAQVFRLLQQAHGGETSMRRVFNVLYP
MPADQRRHVSINSARWLPEPGLGLAYGTNKGDVICRPEALNSGVYEWQDLNETVFTVHSNSRSESRPG
TSRATWRTRDRDMLMNAIGLQPRNPATSVTSQGTETLALQLQNAETQTEREVPEPGTAASGPGESEY
GASGEDALSRIQRLMAEGGMTAVVQREQSTTMASMGFGNNIIVSHRIHRSSQTGTEPGAHTSSPQPST
SRGLLPEAGQLAERGLSPRTASWDQPGTPGREPTQPTLPSSSPVIPVSLPSAEGPTVHCELNNHLLD
GGSSRGAAGPRGEPNR
  
```

TRTRPLEQKLISEEDLAANDILDYKDDDDK

Chromatograms: https://cdn.origene.com/chromatograms/mk6290_e05.zip

Restriction Sites: SgfI-MluI

Cloning Scheme:



ACCN: NM_017749

ORF Size: 3624 bp

OTI Disclaimer: Due to the inherent nature of this plasmid, standard methods to replicate additional amounts of DNA in E. coli are highly likely to result in mutations and/or rearrangements. Therefore, OriGene does not guarantee the capability to replicate this plasmid DNA. Additional amounts of DNA can be purchased from OriGene with batch-specific, full-sequence verification at a reduced cost. Please contact our customer care team at custsupport@origene.com or by calling 301.340.3188 option 3 for pricing and delivery.

The molecular sequence of this clone aligns with the gene accession number as a point of reference only. However, individual transcript sequences of the same gene can differ through naturally occurring variations (e.g. polymorphisms), each with its own valid existence. This clone is substantially in agreement with the reference, but a complete review of all prevailing variants is recommended prior to use. [More info](#)

OTI Annotation: This clone was engineered to express the complete ORF with an expression tag. Expression varies depending on the nature of the gene.

Components: The ORF clone is ion-exchange column purified and shipped in a 2D barcoded Matrix tube containing 10ug of transfection-ready, dried plasmid DNA (reconstitute with 100 ul of water).

Reconstitution Method:

1. Centrifuge at 5,000xg for 5min.
2. Carefully open the tube and add 100ul of sterile water to dissolve the DNA.
3. Close the tube and incubate for 10 minutes at room temperature.
4. Briefly vortex the tube and then do a quick spin (less than 5000xg) to concentrate the liquid at the bottom.
5. Store the suspended plasmid at -20°C. The DNA is stable for at least one year from date of shipping when stored at -20°C.

RefSeq: [NM_017749.3](#)

RefSeq Size: 5034 bp

RefSeq ORF: 3627 bp

Locus ID: 55626

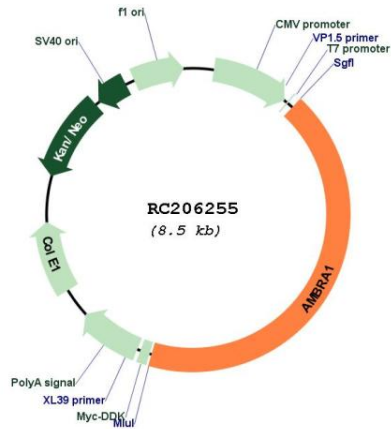
UniProt ID: [Q9C0C7](#)

Cytogenetics: 11p11.2

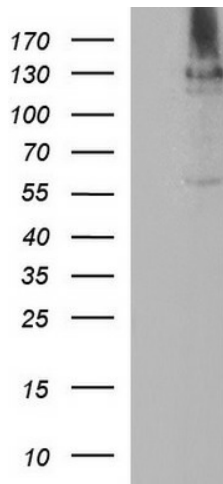
MW: 132.8 kDa

Gene Summary: Regulates autophagy and development of the nervous system. Involved in autophagy in controlling protein turnover during neuronal development, and in regulating normal cell survival and proliferation (By similarity).[UniProtKB/Swiss-Prot Function]

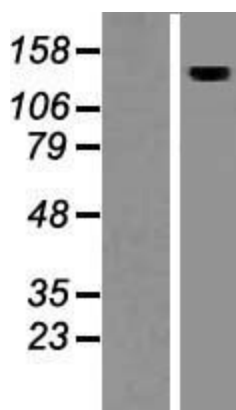
Product images:



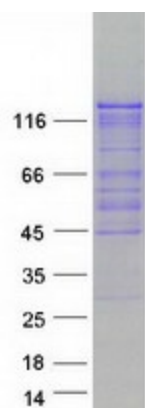
Circular map for RC206255



HEK293T cells were transfected with the pCMV6-ENTRY control (Cat# [PS100001], Left lane) or pCMV6-ENTRY AMBRA1 (Cat# RC206255, Right lane) cDNA for 48 hrs and lysed. Equivalent amounts of cell lysates (5 ug per lane) were separated by SDS-PAGE and immunoblotted with anti-AMBRA(Cat# [TA590501]). Positive lysates [LY413575] (100ug) and [LC413575] (20ug) can be purchased separately from OriGene.



Western blot validation of overexpression lysate (Cat# [LY413575]) using anti-DDK antibody (Cat# [TA50011-100]). Left: Cell lysates from untransfected HEK293T cells; Right: Cell lysates from HEK293T cells transfected with RC206255 using transfection reagent MegaTran 2.0 (Cat# [TT210002]).



Coomassie blue staining of purified AMBRA1 protein (Cat# [TP306255]). The protein was produced from HEK293T cells transfected with AMBRA1 cDNA clone (Cat# RC206255) using MegaTran 2.0 (Cat# [TT210002]).