

## Product datasheet for **RC206169**

### **Snf1lk (SIK1) (NM\_173354) Human Tagged ORF Clone**

#### **Product data:**

Product Type:	Expression Plasmids
Product Name:	Snf1lk (SIK1) (NM_173354) Human Tagged ORF Clone
Tag:	Myc-DDK
Symbol:	Snf1lk
Synonyms:	DEE30; MSK; SIK; SIK-1; SIK1B; SNF1LK
Mammalian Cell Selection:	Neomycin
Vector:	pCMV6-Entry (PS100001)
E. coli Selection:	Kanamycin (25 ug/mL)



[View online »](#)

**ORF Nucleotide Sequence:**

>RC206169 ORF sequence  
 Red=Cloning site Blue=ORF Green=Tags(s)

TTTTGTAATACGACTCACTATAGGGCGGCCGGAATTCGTCGACTGGATCCGGTACCGAGGAGATCTGCC  
 GCC**CGGATCGCC**

ATGGTTATCATGTTCGGAGTTCAGCGCGGACCCCGCGGGCCAGGGTCAGGGCCAGCAGAAGCCCTCCGGG  
 TGGGTTTTTACGACATCGAGCGGACCCTGGGCAAAGGCAACTTCGCGGTGGTGAAGCTGGCGCGCATCG  
 AGTCACCAAAAACGCAGGTTGCAATAAAAAATAATTGATAAAAACACGATTAGATTCAAGCAATTTGGAGAAA  
 ATCTATCGTGAGGTTTCAGCTGATGAAGCTTCTGAACCATCCACACATCATAAAGCTTTACCAGGTTATGG  
 AAACAAAGGACATGCTTTACATCGTCACTGAATTTGCTAAAAATGGAGAAATGTTTGATTATTTGACTTC  
 CAACGGGCACCTGAGTGAGAACGAGGCGCGGAAGAAGTTCTGGCAAATCCTGTCGGCCGTGGAGTACTGT  
 CACGACCATCACATCGTCCACCGGGACCTCAAGACCGAGAACCTCCTGCTGGATGGCAACATGGACATCA  
 AGCTGGCAGATTTGGATTTGGGAATTTCTACAAGTCAGGAGAGCCTCTGTCCACGTGGTGTGGGAGCCC  
 CCCGATGCCGCCCGGAAGTCTTTGAGGGGAAGGAGTATGAAGGCCCCAGCTGGACATCTGGAGCCTG  
 GCGTGGTGTACGTCTGGTCTGCGGTTCTCTCCCTTCGATGGGCCAACTGCCGACGCTGAGAC  
 AGCGGGTGTGGAGGGCCGCTTCCGCATCCCTTCTCATGTCTCAAGACTGTGAGAGCCTGATCCGCCG  
 CATGCTGGTGGTGGACCCGCCAGGCGCATCACCATCGCCAGATCCGGCAGCACCGGTGGATGCGGGCT  
 GAGCCCTGCTTCCCGGGACCCGCTGCCCGCCTTCTCCGCACACAGCTACACCTCCAACCTGGGCGACT  
 ACGATGAGCAGGCGCTGGGTATCATGCAGACCTGGGCGTGGACCGGCAGAGGACGGTGGAGTCACTGCA  
 AAACAGCAGCTATAACCACTTTGCTGCCATTTATTACCTCCTCCTGAGCGGCTCAAGGAGTATCGGAAT  
 GCCCAGTGCGCCCGCCCGGGCCTGCCAGGCAGCCGCGCCTCGAGCTCGGACCTCAGTGGTTTGGAGG  
 TGCTCAGGAAGTCTTCCACCGACCTTCCGACCTGCCTTGTGTGCCCGCAGCCGACACCTTGGT  
 GCAGTCCGTCTCCAGGCCGAGATGGAAGTGTGAGCTCCAGAGCTCGCTGCAGTGGCCCTTGTCTCCCG  
 GTGGATGCCAGTGCAGCGGAGTGTCCGGCCCGGCCGTGTCCCAAGCAGCCTGCTGGACACAGCCA  
 TCAGTGAGGAGGCCAGGCAGGGCCGGGCTAGAGGAGGAGCAGGACACGCAGGAGTCCCTGCCAGCAG  
 CACGGGCCGAGGCACACCCTGGCCGAGGTCTCCACCCGCTCTCCCACTCACCGCCATGTATAGTC  
 GTCTCCCTCCACCACGGCAAGTCTGCAGAGGGAACCAGCTCTGACAGTTGTCTGACCTTCTCTGCGA  
 GCAAAGCCCCGCGGGGCTCAGTGGCACCCCGGCACTCAGGGGCTGCTGGGCGCTGCTCCCGGTCAG  
 GCTGGCCTCGCCCTTCTGGGGTGCAGTCCGCCACCCAGTGTGCAGGCTCAGGGGGGCTTGGGAGGA  
 GCTGTTCTGCTCCCTGTAGCTTCCAGGAGGACGGCGGGCGTGGACACCTCACTGACTCAAGGGCTGA  
 AGGCCTTTCGGCAGCAGCTGAGGAAGACCACGCGGACAAAGGGTTTCTGGGACTGAACAAAATCAAGGG  
 GCTGGCTCGCCAGGTGTGCCAGGTCCCTGCCAGCCGGGCCAGCAGGGGGGCTGAGCCCTTCCACGCC  
 CCTGCACAGAGCCAGGCTGCACGGCGGCGCAGCCGGCAGCCGGGAGGGCTGGAGCCTGCTGGAGGAGG  
 TGCTAGAGCAGCAGAGGCTGCTCCAGTTACAGCACCCCGGCGCTGCACCCGGCTGCTCCAGGCCCC  
 CCAGCCGGCCCTGCCCGTTTGTGATCGCCCTGTGATGGCCCTGGGGCTGCCCGCTCCCAAGCACC  
 CTCCTCACGTGGGGCTCCCGTGTGCTGCCGCCCACTCCTGCAGACCGGCGGTCCCGGTGGCCCTCAG  
 CGGCGCAGCTCCTGGACACACCTGCACATTGGACCCGGCCCCACCGCCCTCCCGCTGTGCCCCACC  
 ACGCCTGGCCAGGCTGGCCCCAGGTTGTGAGCCCTGGGGTGTGCAGGGGACTGTGAGATGGAGGAC  
 CTGATGCCCTGCTCCCTAGGCACGTTTGTCTGGTGCAG

**ACGCGT**ACGCGGCCGCTCGAGCAGAACTCATCTCAGAAGAGGATCTGGCAGCAAATGATATCTGGATT  
 ACAAGGATGACGACGATAAGGTTTAA

**Protein Sequence:** >RC206169 protein sequence  
Red=Cloning site Green=Tags(s)

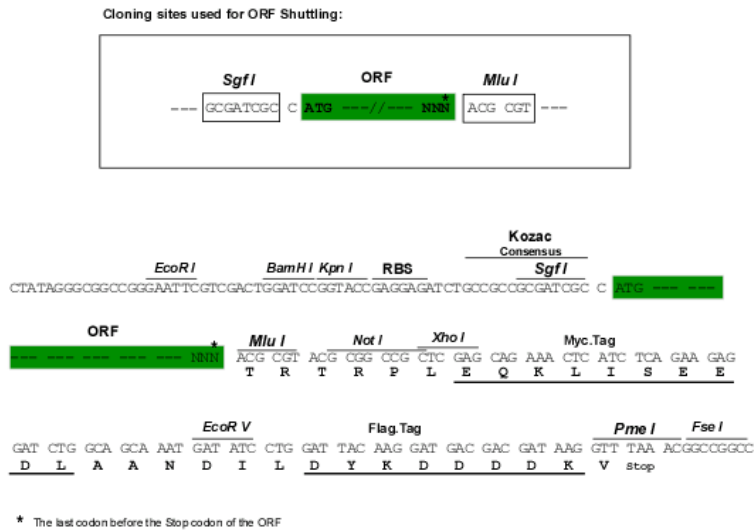
MVIMSEFSADPAGQGQKPLRVGFYDIERTLGKGNFAVVKLARHRVTKTQVAIKIIDKTRLDSSNLEK  
IYREVQLMKLLNHPHIKLYQVMETKMLYIVTEFAKNGEMFDYLTSNHLSENEARKKFWQILSAVEYC  
HDHHIVHRDLKTENLLDGNMDIKLADFGFNFYKSGEPLSTWCGSPPYAAPEVFEGKEYEGPQLDIWSL  
GVVLYVLVCGSLPFDGPNLPTLRQRVLEGRFRIPFFMSQDCESLIRRMLVVDPAARRITIAQIRQHRWMRA  
EPCLPGPACPAFSAHSYTSNLGDYDEQALGIMQTLGVDRQRTVESLQNSSYNHFAAIYLLERLKEYRN  
AQCARPGPARQPRRSDLSGLEVPQEGLSTDPFRPALLCPQPQTLVQSVLQAEMDCELQSSLQWPLFFP  
VDASCSGVFRPRPVSPSSLLDTAISEEARQGPGLSEEEQDTQESLPSSTGRRHTLAEVSTRLSPLTAPCIV  
VSPSTTASPAEGTSSDSCLTFSASKSPAGLSGTPATQGLLGACSPVRLASPFLLGSSQATPVLQAQGGGG  
AVLLPVSFQEGRRASDTSLTQGLKAFRQQLRKTTRTKGFLGLNLIKGLARQVCQVPASRASRGGLSPFHA  
PAQSPGLHGGAAGSREGWSLLEEVLEQQRLQLQHHPAAAPGCSQAPQAPAPFVIAPCDGPGAAPLPST  
LLTSGPLLLPPPLLQTGASPVASAAQLLDTHLHIGTGPTALPAVPPPRLARLAPGCEPLGLLQGDCEMED  
LMPCSLGTFVLVQ

TRTRPLEQKLISEEDLAANDILDYKDDDDKV

**Chromatograms:** [https://cdn.origene.com/chromatograms/mk6140\\_f05.zip](https://cdn.origene.com/chromatograms/mk6140_f05.zip)

**Restriction Sites:** Sgfl-MluI

**Cloning Scheme:**



**ACCN:** NM\_173354

**ORF Size:** 2349 bp

**OTI Disclaimer:** The molecular sequence of this clone aligns with the gene accession number as a point of reference only. However, individual transcript sequences of the same gene can differ through naturally occurring variations (e.g. polymorphisms), each with its own valid existence. This clone is substantially in agreement with the reference, but a complete review of all prevailing variants is recommended prior to use. [More info](#)

**OTI Annotation:** This clone was engineered to express the complete ORF with an expression tag. Expression varies depending on the nature of the gene.

**Components:** The ORF clone is ion-exchange column purified and shipped in a 2D barcoded Matrix tube containing 10ug of transfection-ready, dried plasmid DNA (reconstitute with 100 ul of water).

**Reconstitution Method:**

1. Centrifuge at 5,000xg for 5min.
2. Carefully open the tube and add 100ul of sterile water to dissolve the DNA.
3. Close the tube and incubate for 10 minutes at room temperature.
4. Briefly vortex the tube and then do a quick spin (less than 5000xg) to concentrate the liquid at the bottom.
5. Store the suspended plasmid at -20°C. The DNA is stable for at least one year from date of shipping when stored at -20°C.

**RefSeq:** [NM\\_173354.2](#), [NP\\_775490.1](#)

**RefSeq Size:** 4706 bp

**RefSeq ORF:** 2352 bp

**Locus ID:** 150094

**UniProt ID:** [P57059](#)

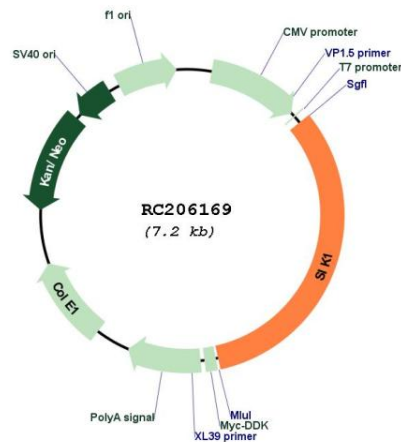
**Cytogenetics:** 21q22.3

**Protein Families:** Druggable Genome, Protein Kinase

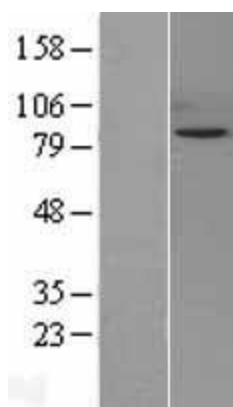
**MW:** 84.9 kDa

**Gene Summary:** This gene encodes a serine/threonine protein kinase that contains a ubiquitin-associated (UBA) domain. The encoded protein is a member of the adenosine monophosphate-activated kinase (AMPK) subfamily of kinases that play a role in conserved signal transduction pathways. A mutation in this gene is associated with early infantile epileptic encephalopathy 30. [provided by RefSeq, Nov 2016]

### Product images:



Circular map for RC206169



Western blot validation of overexpression lysate (Cat# [LY403553]) using anti-DDK antibody (Cat# [TA50011-100]). Left: Cell lysates from untransfected HEK293T cells; Right: Cell lysates from HEK293T cells transfected with RC206169 using transfection reagent MegaTran 2.0 (Cat# [TT210002]).