

Product datasheet for **RC205943**

Albumin (ALB) (NM_000477) Human Tagged ORF Clone

Product data:

Product Type:	Expression Plasmids
Product Name:	Albumin (ALB) (NM_000477) Human Tagged ORF Clone
Tag:	Myc-DDK
Symbol:	Albumin
Synonyms:	FDAHT; HSA; PRO0883; PRO0903; PRO1341
Mammalian Cell Selection:	Neomycin
Vector:	pCMV6-Entry (PS100001)
E. coli Selection:	Kanamycin (25 ug/mL)



[View online »](#)

ORF Nucleotide Sequence:

>RC205943 representing NM_000477
 Red=Cloning site Blue=ORF Green=Tags(s)

TTTTGTAATACGACTCACTATAGGGCGGCCGGAATTCGTCGACTGGATCCGGTACCGAGGAGATCTGCC
 GCC**CGCATCGCC**

ATGAAGTGGGTAACCTTTATTTCCCTTCTTTTTCTCTTTAGCTCGGCTTATCCAGGGGTGTGTTTCGTC
 GAGATGCACACAAGAGTGAGTTGCTCATCGGTTTAAAGATTTGGGAGAAGAAAATTTCAAAGCCTTGGT
 GTTGATTGCCCTTTGCTCAGTATCTTCAGCAGTGTCCATTTGAAGATCATGTAAAATTAGTGAATGAAGTA
 ACTGAATTTGCAAAAACATGTGTTGCTGATGAGTCAGCTGAAAATTGTGACAAATCACTTCATACCCCTTT
 TTGGAGACAAATTATGCACAGTTGCAACTCTTCGTGAAACCTATGGTGAATGGCTGACTGCTGTGCAAA
 ACAAGAACCTGAGAGAAATGAATGCTTCTTCAACACAAAGATGACAACCCAAACCTCCCCGATTGGTG
 AGACCAGAGGTTGATGTGATGTGACTGCTTTTCATGACAATGAAGAGACATTTTGA AAAAATACTTAT
 ATGAAATTGCCAGAAGACATCCTTACTTTTATGCCCGGAACTCCTTTTCTTTGCTAAAAGGTATAAAGC
 TGCTTTTACAGAATGTTGCCAAGCTGCTGATAAAGCTGCCTGCCGTTGCCAAAGCTCGATGAATTCGG
 GATGAAGGGAAGGCTTCGCTGCCAAACAGAGACTCAAGTGTGCCAGTCTCCAAAATTTGGAGAAAGAG
 CTTTCAAAGCATGGGCAGTAGCTCGCCTGAGCCAGAGATTTCCAAAGCTGAGTTTGCAAGATTTCCAA
 GTTAGTGACAGATCTTACCAAAGTCCACACGGAATGCTGCCATGGAGATCTGCTTGAATGTGCTGATGAC
 AGGGCGGACCTTGCCAAGTATATCTGTGAAAATCAAGATTCGATCTCCAGTAAACTGAAGGAATGCTGTG
 AAAAACCTCTGTTGAAAAATCCCACTGCATTGCCGAAGTGAAAATGATGAGATGCCTGCTGACTTGCC
 TTCATTAGCTGCTGATTTTGTGAAAGTAAGGATGTTTGCAAAAATGCTGAGGCAAGGATGTCTTC
 CTGGGCATGTTTTGTATGAATATGCAAGAAGGCATCTGATTACTCTGCTGCTGCTGCTGAGACTTG
 CCAAGACATATGAAACCACTCTAGAGAAGTCTGTGCCGCTGCAGATCCTCATGAATGCTATGCCAAAG
 GTTCGATGAATTTAAACCTCTTGTGGAAGAGCCTCAGAATTTAATCAAACAAAATTTGTGAGCTTTTTGAG
 CAGCTTGAGAGTACAAATCCAGAATGCGCTATTAGTTCGTTACACCAAGAAAGTACCCCAAGTGCA
 CTCCAACCTTGTAGAGGCTCAAGAAACCTAGGAAAAGTGGGCAGCAAATGTTGTAACATCCTGAAGC
 AAAAAGAATGCCCTGTGCAGAAGACTATCTATCCGTGGTCTGAACCAAGTATGTGTGTTGCATGAGAAA
 ACGCCAGTAAAGTACAGAGTACCAAATGCTGCACAGAATCCTTGGTGAACAGGCGTCCATGCTTTTCAG
 CTCTGGAAGTCGATGAAACATACGTTCCCAAAGAGTTAATGCTGAAACATTACCTTCCATGCAGATAT
 ATGCACACTTTCTGAGAAGGAGAGACAAATCAAGAAACAAACTGCACTTGTGAGCTCGTGAACACAAG
 CCCAAGGCAACAAAAGAGCAACTGAAAGCTGTTATGGATGATTTGCGAGCTTTTGTAGAGAAGTGTGCA
 AGGCTGACGATAAGGAGACCTGCTTTGCCGAGGAGGGTAAAAAATTGTTGCTGCAAGTCAAGCTGCCTT
 AGGCTTA

ACGCGTACGCGGCCGCTCGAGCAGAAACTCATCTCAGAAGAGGATCTGGCAGCAAATGATATCCTGGATT
 ACAAGGATGACGACGATAAGGTTTAA

Protein Sequence:

>RC205943 representing NM_000477
 Red=Cloning site Green=Tags(s)

MKWVTFISLLFLFSSAYSRGVFRDRAHKSEVAHRFKDLGEENFKALVLI AFAQYLQQPFEDHVKLVNEV
 TEFAKTVADESAENCDKSLHTLFGDKLCTVATLRETYGEMADCCAKQEPERNECFLQHKDDNPNLPRLV
 RPEVDVMCTAFHDNEETFLKKYLYEIAARRHPYFYAPELFFAKRYKAAFTECCQAADKAACLLPKLEDEL
 DEGKASSAKQRLKASLQKFGERAFAKAWAVARLSQRFPKAEFAEVSKLVTDLTKVHTECCHGDLLLECADD
 RADLAKYICENQDSISSKLECKEPLLEKSHCIAEVENDEMPADLPSLAADFVESKDVCKNYAEAKDVF
 LGMFLYEYARRHPDYSVLLLRLLAKTYETLEKCAAADPHECYAKVFDEFKPLVEEPQNLIKQNCLEFE
 QLGEYKFNALLVRYTKKVPQVSTPTLVEVSRNLGKVGSKCKHPEAKRMPAEDYLSVVLNQLCVLHEK
 TPVSDRVTKCTESLVNRRPCFSALEVDETYVPKEFNAETFTFHADICTLSEKERQIKKQTLVELVKHK
 PKATKEQLKAVMDDFAAFVEKCKADDKETCFAEEGKLVAAQAALGL

TRTRPLEQKLI SEEDLAANDILDYKDDDDKV

Reconstitution Method:

1. Centrifuge at 5,000xg for 5min.
2. Carefully open the tube and add 100ul of sterile water to dissolve the DNA.
3. Close the tube and incubate for 10 minutes at room temperature.
4. Briefly vortex the tube and then do a quick spin (less than 5000xg) to concentrate the liquid at the bottom.
5. Store the suspended plasmid at -20°C. The DNA is stable for at least one year from date of shipping when stored at -20°C.

RefSeq: [NM_000477.7](#)

RefSeq Size: 2215 bp

RefSeq ORF: 1830 bp

Locus ID: 213

UniProt ID: [P02768](#)

Cytogenetics: 4q13.3

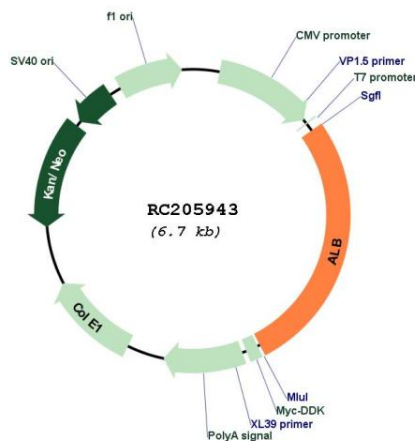
Domains: ALBUMIN

Protein Families: Secreted Protein

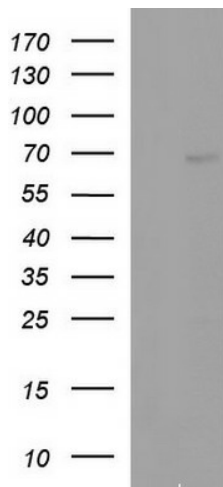
MW: 69.37 kDa

Gene Summary: This gene encodes the most abundant protein in human blood. This protein functions in the regulation of blood plasma colloid osmotic pressure and acts as a carrier protein for a wide range of endogenous molecules including hormones, fatty acids, and metabolites, as well as exogenous drugs. Additionally, this protein exhibits an esterase-like activity with broad substrate specificity. The encoded preproprotein is proteolytically processed to generate the mature protein. A peptide derived from this protein, EPI-X4, is an endogenous inhibitor of the CXCR4 chemokine receptor. [provided by RefSeq, Jul 2016]

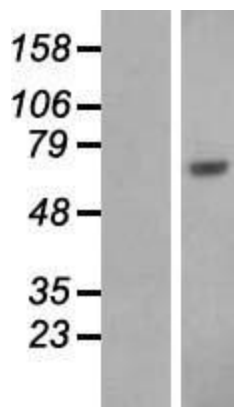
Product images:



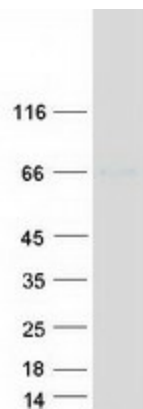
Circular map for RC205943



HEK293T cells were transfected with the pCMV6-ENTRY control (Cat# [PS100001], Left lane) or pCMV6-ENTRY ALB (Cat# RC205943, Right lane) cDNA for 48 hrs and lysed. Equivalent amounts of cell lysates (5 ug per lane) were separated by SDS-PAGE and immunoblotted with anti-ALB (Cat# [TA507290]). Positive lysates [LY424677] (100ug) and [LC424677] (20ug) can be purchased separately from OriGene.



Western blot validation of overexpression lysate (Cat# [LY424677]) using anti-DDK antibody (Cat# [TA50011-100]). Left: Cell lysates from untransfected HEK293T cells; Right: Cell lysates from HEK293T cells transfected with RC205943 using transfection reagent MegaTran 2.0 (Cat# [TT210002]).



Coomassie blue staining of purified ALB protein (Cat# [TP305943]). The protein was produced from HEK293T cells transfected with ALB cDNA clone (Cat# RC205943) using MegaTran 2.0 (Cat# [TT210002]).