

Product datasheet for **RC205691**

PXR (NR112) (NM_003889) Human Tagged ORF Clone

Product data:

Product Type:	Expression Plasmids
Product Name:	PXR (NR112) (NM_003889) Human Tagged ORF Clone
Tag:	Myc-DDK
Symbol:	PXR
Synonyms:	BXR; ONR1; PAR; PAR1; PAR2; PARq; PRR; PXR; SAR; SXR
Mammalian Cell Selection:	Neomycin
Vector:	pCMV6-Entry (PS100001)
E. coli Selection:	Kanamycin (25 ug/mL)



[View online »](#)

ORF Nucleotide Sequence:

>RC205691 representing NM_003889
 Red=Cloning site Blue=ORF Green=Tags(s)

TTTTGTAATACGACTCACTATAGGGCGGCCGGAATTCGTCGACTGGATCCGGTACCGAGGAGATCTGCC
 GCC**CGGATCGCC**

ATGGAGGTGAGACCCAAAGAAAGCTGGAACCATGCTGACTTTGTACACTGTGAGGACACAGAGTCTGTTC
 CTGGAAAGCCAGTGTCAACGCAGATGAGGAAGTCGGAGGTCCCCAAATCTGCCGTGTATGTGGGACAA
 GGCCACTGGCTATCACTTCAATGTCATGACATGTGAAGGATGCAAGGGCTTTTTTCAGGAGGGCCATGAAA
 CGCAACGCCCGGCTGAGGTGCCCTTCCGGAAGGGCGCCTGCGAGATCACCCGGAAGACCCGGCGACAGT
 GCCAGGCTGCCGCTGCGCAAGTGCCTGGAGAGCGGCATGAAGAAGGAGATGATCATGTCCGACGAGGC
 CGTGGAGGAGAGGCGGGCCTTGATCAAGCGAAGAAAAGTGAACGGACAGGGACTCAGCCACTGGGAGTG
 CAGGGGCTGACAGAGGAGCAGCGGATGATGATCAGGGAGCTGATGGACGCTCAGATGAAAACCTTTGACA
 CTACCTTCTCCATTTCAAGAATTTCCGGCCAGGGGTGCTTAGCAGTGGTGGCAGTTGCCAGAGTCTCT
 GCAGGCCCATCGAGGGAAGAAGCTGCCAAGTGGAGCCAGTCCGAAAGATCTGTGCTCTTTGAAGGTC
 TCTCTGACAGTGCGGGGGAGGATGGCAGTGTCTGGAAC TACAAACCCCAAGCCGACAGTGGCGGAAAG
 AGATCTTCTCCCTGCTGCCCCACATGGCTGACATGTCAACCTACATGTTCAAAGGCATCATCAGCTTTGC
 CAAAGTCATCTCCTACTTCAGGGACTTGCCCATCGAGGACCAGATCTCCCTGCTGAAGGGGGCCGTTTC
 GAGCTGTGTCAACTGAGATTCAACACAGTGTTC AACCGGAGACTGGAACCTGGGAGTGTGGCCGGCTGT
 CCTACTGCTTGGAAAGACTGCAGGTGGCTTCCAGCAACTTCTACTGGAGCCCATGCTGAAATCCACTA
 CATGCTGAAGAAGCTGCAGTGCATGAGGAGGATATGTGCTGATGCAGGCCATCTCCCTTCTCCCA
 GACCGCCAGGTGTGCTGCAGCACCGCTGGTGGACCAGCTGCAGGAGCAATTGCCATTACTCTGAAGT
 CCTACATTGAATGCAATCGGCCCCAGCCTGCTCATAGTTCTTGTCTCTGAAGATCATGGCTATGCTCAC
 CGAGTCCGACAGCATCAATGCTCAGCACACCCAGCGGCTGCTGCGCATCCAGGACATACACCCCTTGTCT
 ACGCCCTCATGCAGGAGTTGTTGCGCATCACAGGTAGC

ACGCGTACGCGGCCGCTCGAGCAGAAACTCATCTCAGAAGAGGATCTGGCAGCAAATGATATCCTGGATT
 ACAAGGATGACGACGATAAGGTTTAA

Protein Sequence:

>RC205691 representing NM_003889
 Red=Cloning site Green=Tags(s)

AIAXEVRPKESWNHADVFHCEDESVP GKPSVNADEEVGGPQICRVCGDKATGYHFNVMTCEGCKGFFRR
 AMKRNARLRCPFRKGACEITRKTRRQCACRLRKCLESGMKKEMIMSDEAVEERRALIKRKK SERTGTQP
 LGVQGLTEEQRMMIRELMDAQMKTFTD TFSHFKNFRPGVLSGGCELPESLQAPSREEAAKWSQVRKDLCS
 LKVSLLQLRGEDGSVWNYKPPADSGGKEIF SLLPHMADMSTYMFKGIISFAKVISYFRDLPIEDQISLLKG
 AAFELCQLRFNTVFNAETGTWECGRLSYCLED TAGGFQQLLEPMLKFHYMLKKLQLHEEEYVLMQAI SL
 FSPDRPGVLQHRVVDQLQEQAITLKS YIECNRPQPAHRFLFLKIMAMLT ELSINAQHTQRLRLRIQDIH
 PFATPLMQELFGITGS

TRTRPLEQKLISEEDLAANDILDYKDDDDKV

Chromatograms:

https://cdn.origene.com/chromatograms/mg2674_a01.zip

Restriction Sites:

Sgfl-Mlul

Cloning Scheme:



ACCN: NM_003889

ORF Size: 1299 bp

OTI Disclaimer: Due to the inherent nature of this plasmid, standard methods to replicate additional amounts of DNA in E. coli are highly likely to result in mutations and/or rearrangements. Therefore, OriGene does not guarantee the capability to replicate this plasmid DNA. Additional amounts of DNA can be purchased from OriGene with batch-specific, full-sequence verification at a reduced cost. Please contact our customer care team at custsupport@origene.com or by calling 301.340.3188 option 3 for pricing and delivery.

The molecular sequence of this clone aligns with the gene accession number as a point of reference only. However, individual transcript sequences of the same gene can differ through naturally occurring variations (e.g. polymorphisms), each with its own valid existence. This clone is substantially in agreement with the reference, but a complete review of all prevailing variants is recommended prior to use. [More info](#)

OTI Annotation: This clone was engineered to express the complete ORF with an expression tag. Expression varies depending on the nature of the gene.

Components: The ORF clone is ion-exchange column purified and shipped in a 2D barcoded Matrix tube containing 10ug of transfection-ready, dried plasmid DNA (reconstitute with 100 ul of water).

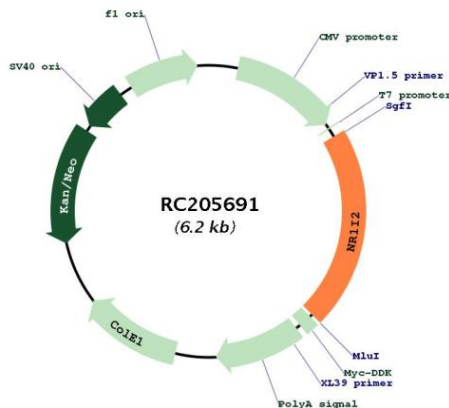
- Reconstitution Method:
1. Centrifuge at 5,000xg for 5min.
 2. Carefully open the tube and add 100ul of sterile water to dissolve the DNA.
 3. Close the tube and incubate for 10 minutes at room temperature.
 4. Briefly vortex the tube and then do a quick spin (less than 5000xg) to concentrate the liquid at the bottom.
 5. Store the suspended plasmid at -20°C. The DNA is stable for at least one year from date of shipping when stored at -20°C.

RefSeq: [NM_003889.3](#)

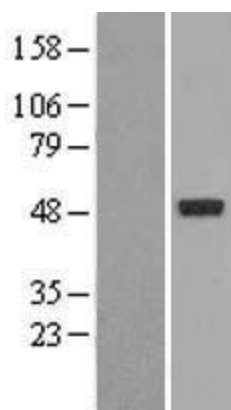
RefSeq Size: 4446 bp
 RefSeq ORF: 1305 bp
 Locus ID: 8856
 UniProt ID: [O75469](#)
 Cytogenetics: 3q13.33
 Domains: HOLI, zf-C4
 Protein Families: Druggable Genome, Nuclear Hormone Receptor, Transcription Factors
 MW: 49.6 kDa

Gene Summary: This gene product belongs to the nuclear receptor superfamily, members of which are transcription factors characterized by a ligand-binding domain and a DNA-binding domain. The encoded protein is a transcriptional regulator of the cytochrome P450 gene CYP3A4, binding to the response element of the CYP3A4 promoter as a heterodimer with the 9-cis retinoic acid receptor RXR. It is activated by a range of compounds that induce CYP3A4, including dexamethasone and rifampicin. Several alternatively spliced transcripts encoding different isoforms, some of which use non-AUG (CUG) translation initiation codon, have been described for this gene. Additional transcript variants exist, however, they have not been fully characterized. [provided by RefSeq, Jul 2008]

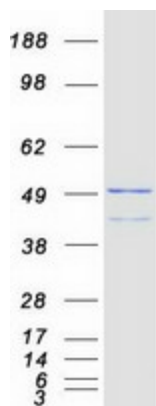
Product images:



Circular map for RC205691



Western blot validation of overexpression lysate (Cat# [LY401282]) using anti-DDK antibody (Cat# [TA50011-100]). Left: Cell lysates from untransfected HEK293T cells; Right: Cell lysates from HEK293T cells transfected with RC205691 using transfection reagent MegaTran 2.0 (Cat# [TT210002]).



Coomassie blue staining of purified NR1I2 protein (Cat# [TP305691]). The protein was produced from HEK293T cells transfected with NR1I2 cDNA clone (Cat# RC205691) using MegaTran 2.0 (Cat# [TT210002]).