

Product datasheet for **RC205520**

SCDGFB (PDGFD) (NM_033135) Human Tagged ORF Clone

Product data:

Product Type:	Expression Plasmids
Product Name:	SCDGFB (PDGFD) (NM_033135) Human Tagged ORF Clone
Tag:	Myc-DDK
Symbol:	SCDGFB
Synonyms:	IEGF; MSTP036; SCDGF-B; SCDGFB
Mammalian Cell Selection:	Neomycin
Vector:	pCMV6-Entry (PS100001)
E. coli Selection:	Kanamycin (25 ug/mL)
ORF Nucleotide Sequence:	>RC205520 ORF sequence Red=Cloning site Blue=ORF Green=Tags(s)

TTTTGTAATACGACTCACTATAGGGCGCCGGGAATTCGTCGACTGGATCCGGTACCGAGGAGATCTGCC
GCC**CGATCGC**C

ATGCACCGGCTCATCTTTGTCTACACTCTAATCTGCGCAAACCTTTGCAGCTGTCGGGACACTTCTGCAA
CCCCGAGAGCGCATCCATCAAAGCTTTGCGCAACGCCAACCTCAGGCGAGATGACTTGTACCGAAGAGA
TGAGACCATCCAGGTGAAAGGAAACGGCTACGTGCAGAGTCTAGATTCCCGAACAGCTACCCAGGAAC
CTGCTCCTGACATGGCGGCTTCACTCTCAGGAGAATACACGGATACAGCTAGTGTGGACAATCAGTTT
GATTAGAGGAAGCAGAAAATGATATCTGTAGGTATGATTTGTGGAAGTTGAAGATATATCCGAAACCAG
TACCATTATTAGAGGACGATGGTGTGGACACAAGGAAGTTCTCCAAGGATAAAAATCAAGAACGAACCAA
ATTAATAATCACATTCAAGTCCGATGACTACTTTGTGGCTAAACCTGGATTCAAGATTTATTATTCTTTGC
TGGAAGATTTCCAACCCGAGCAGCTTCAGAGACCAACTGGGAATCTGTCAAGCTCTATTTTCAGGGGT
ATCCTATAACTCTCCATCAGTAACGGATCCCACTCTGATTGCGGATGCTCTGGACAAAAAATTGCAGAA
TTTGATACAGTGGAGATCTGCTCAAGTACTTCAATCCAGAGTCATGGCAAGAAGATCTTGAGAATATGT
ATCTGGACACCCCTCGGTATCGAGGCAGGTCATACCATGACCGGAAGTCAAAGTTGACCTGGATAGGCT
CAATGATGATGCCAAGCGTTACAGTTGCACTCCAGGAATTAAGTCAATATAAGAGAAGAGCTGAAG
TTGGCCAAATGTGGTCTTCTTTCCAGTTGCCTCCTCGTGCAGCGCTGTGGAGAAATTGTGGCTGTGGAA
CTGTCAACTGGAGTCTGCACATGCAATTCAGGGAAAACCGTGAAAAAGTATCATGAGGTATTACAGTT
TGAGCCTGGCCACATCAAGAGGAGGGGTAGAGCTAAGACCATGGCTCTAGTTGACATCCAGTTGGATCAC
CATGAACGATGTGATTGTATCTGCAGCTCAAGACCACCTCGA

ACGCGTACGCGGCCGCTCGAGCAGAAACTCATCTCAGAAGAGGATCTGGCAGCAAATGATATCCTGGATT
ACAAGGATGACGACGATAAGGTTTAA



[View online »](#)

Protein Sequence: >RC205520 protein sequence
Red=Cloning site Green=Tags(s)

MHRLIFVYTLICANFCSRDTSATPQSASIKALRNANLRDDLYRRDETIQVKGNGYVQSPRFPNSYPRN
 LLLTWRLHSQENTRIQLVFDNQFGLLEEAENDICRYDFVEVEDISETSTIIRGRWCGHKEVPPRIKSRTNQ
 IKITFKSDDYFVAKPGFKIYYSLLEDFQAAAASETNWESVTSSISGVSYNSPSVTDPTLIADALDKKIAE
 FDTVEDLLKYFNPE^{WQEDLENMYLDTPRYRGRSYHDRKSKVDLDRLNDDAKRYSC^TPRNYSVNI^REELK}
 LANVVFPRCLLVQRCGGNCGCGTVNWRSC^TCNSGKTVK^KYHEVLQFEPGH^IKRRGRAKT^MALVDIQL^DH
 HERCDCICSSRPPR

TRTRPLE^QKLISEEDLAANDILDYKDDDDK^V

Chromatograms: https://cdn.origene.com/chromatograms/mk6314_g09.zip

Restriction Sites: SgfI-MluI

Cloning Scheme:



* The last codon before the Stop codon of the ORF

ACCN: NM_033135

ORF Size: 1092 bp

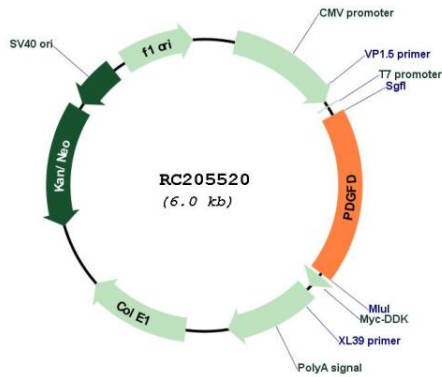
OTI Disclaimer: The molecular sequence of this clone aligns with the gene accession number as a point of reference only. However, individual transcript sequences of the same gene can differ through naturally occurring variations (e.g. polymorphisms), each with its own valid existence. This clone is substantially in agreement with the reference, but a complete review of all prevailing variants is recommended prior to use. [More info](#)

OTI Annotation: This clone was engineered to express the complete ORF with an expression tag. Expression varies depending on the nature of the gene.

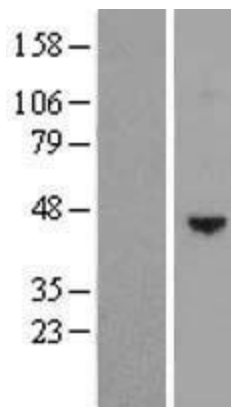
Components: The ORF clone is ion-exchange column purified and shipped in a 2D barcoded Matrix tube containing 10ug of transfection-ready, dried plasmid DNA (reconstitute with 100 ul of water).

Reconstitution Method:	<ol style="list-style-type: none">1. Centrifuge at 5,000xg for 5min.2. Carefully open the tube and add 100ul of sterile water to dissolve the DNA.3. Close the tube and incubate for 10 minutes at room temperature.4. Briefly vortex the tube and then do a quick spin (less than 5000xg) to concentrate the liquid at the bottom.5. Store the suspended plasmid at -20°C. The DNA is stable for at least one year from date of shipping when stored at -20°C.
RefSeq:	NM_033135.4
RefSeq Size:	3979 bp
RefSeq ORF:	1095 bp
Locus ID:	80310
UniProt ID:	Q9GZP0
Cytogenetics:	11q22.3
Domains:	CUB
Protein Families:	Druggable Genome, Secreted Protein
Protein Pathways:	Focal adhesion, Gap junction, Melanoma, Prostate cancer, Regulation of actin cytoskeleton
MW:	42.2 kDa
Gene Summary:	<p>The protein encoded by this gene is a member of the platelet-derived growth factor family. The four members of this family are mitogenic factors for cells of mesenchymal origin and are characterized by a core motif of eight cysteines, seven of which are found in this factor. This gene product only forms homodimers and, therefore, does not dimerize with the other three family members. It differs from alpha and beta members of this family in having an unusual N-terminal domain, the CUB domain. Two splice variants have been identified for this gene. [provided by RefSeq, Jul 2008]</p>

Product images:



Circular map for RC205520



Western blot validation of overexpression lysate (Cat# [LY409700]) using anti-DDK antibody (Cat# [TA50011-100]). Left: Cell lysates from untransfected HEK293T cells; Right: Cell lysates from HEK293T cells transfected with RC205520 using transfection reagent MegaTran 2.0 (Cat# [TT210002]).