

Product datasheet for RC205412

SSMEM1 (NM_145268) Human Tagged ORF Clone

Product data:

Product Type:	Expression Plasmids
Product Name:	SSMEM1 (NM_145268) Human Tagged ORF Clone
Tag:	Myc-DDK
Symbol:	SSMEM1
Synonyms:	C7orf45
Mammalian Cell Selection:	Neomycin
Vector:	pCMV6-Entry (PS100001)
E. coli Selection:	Kanamycin (25 ug/mL)
ORF Nucleotide Sequence:	>RC205412 ORF sequence Red=Cloning site Blue=ORF Green=Tags(s)

TTTTGTAATACGACTCACTATAGGGCGCCGGGAATTCGTCGACTGGATCCGGTACCGAGGAGATCTGCC
GCC**CGATCGC**C

ATGGGAGACCTTTTTTCCTTATTTGGGAGGTAGATCCTCCCCAATACCTGTAAATTGTGCCATTCCAA
ATCAGGATTATGAATGCTGGAAGGATGACTCTTGTGGAACCATAGGGAGCTTCTGCTTTGGTATTTGT
TATCGTATTTGCCTGATGTTCTTCTCTAGGGCTTCTGTCTGGATGTCTGAGGATAAAAAGGATGAAGGC
AGTGGGACAAGTACTTCAGTAAGGAAAGCAAGCAAAGAGACTTCCTGTAAGCGGCAAAGCAAAGACAGTG
CCTGGGATCCCTCACAAACAATGAAGAAACCAAAGCAGAACCACTTACCCTGTAACCAACTCAGAAGT
GGCTTTGGTCAATGCCTATCCTGAACAAAGACGAGCCAGGCGCCAGTCTCAGTTCAATGAGGTGAACCAG
AACCAACATGACAGTGATACTACGGAGTATGGCAGTGAAGAGTCTAACTCAGAAGCCTCCTCGTGGAAGG
AGAGTGAAAGTGAACACCACCCATCACCAGACAGTATTAAGAGGAGAAAAATGGCTCAGAGGCAAAGGAA
TCTGGGAAGTTACCAAATGAGCGAAAGGCACTGCCTCCACTGCAAAGCCTTGAGAACCAACGAATGGTTG
GCGCACCATTCCTGACAGAAAGCCTTCAGTAACACCGCCAATGAAAAGAGACAGTCAAGAGGAAAGTTCCA
TATCTGACATTAACAAGAAATTTAGTAAATTT

ACGCGTACGCGGCCGCTCGAGCAGAAACTCATCTCAGAAGAGGATCTGGCAGCAAATGATATCCTGGATT
ACAAGGATGACGACGATAAGGTTTAA



[View online »](#)

Protein Sequence: >RC205412 protein sequence
 Red=Cloning site Green=Tags(s)

MGDLFSLFWEVDPPIPVNCAIPNQDYECWKDDSCGTIGSFLWYFVIVFVLMFFSRASVWMSSEDKKDEG
 SGTSTSVRKASKETSCKRQSKDSAWDPSQTMKKPKQNQLTPVTNSEVALVNAYPEQRARRQSQFNEVNQ
 NQHDSDTTEYGSEESNSEASSWKESESEHHPSPDSIKRRKMAQRQRNLGSYQMSERHCLHCKALRTNEWL
 AHHSRQKPSVTPPMKRDSQEESISDINKKFSKF

TRTRPLEQKLISEEDLAANDILDYKDDDDKV

Chromatograms: https://cdn.origene.com/chromatograms/mk6535_f07.zip

Restriction Sites: SgfI-MluI

Cloning Scheme:

Cloning sites used for ORF Shuttling:



* The last codon before the Stop codon of the ORF

ACCN: NM_145268

ORF Size: 732 bp

OTI Disclaimer: The molecular sequence of this clone aligns with the gene accession number as a point of reference only. However, individual transcript sequences of the same gene can differ through naturally occurring variations (e.g. polymorphisms), each with its own valid existence. This clone is substantially in agreement with the reference, but a complete review of all prevailing variants is recommended prior to use. [More info](#)

OTI Annotation: This clone was engineered to express the complete ORF with an expression tag. Expression varies depending on the nature of the gene.

Components: The ORF clone is ion-exchange column purified and shipped in a 2D barcoded Matrix tube containing 10ug of transfection-ready, dried plasmid DNA (reconstitute with 100 ul of water).

Reconstitution Method:

1. Centrifuge at 5,000xg for 5min.
2. Carefully open the tube and add 100ul of sterile water to dissolve the DNA.
3. Close the tube and incubate for 10 minutes at room temperature.
4. Briefly vortex the tube and then do a quick spin (less than 5000xg) to concentrate the liquid at the bottom.
5. Store the suspended plasmid at -20°C. The DNA is stable for at least one year from date of shipping when stored at -20°C.

RefSeq: [NM_145268.4](#)

RefSeq Size: 1171 bp

RefSeq ORF: 735 bp

Locus ID: 136263

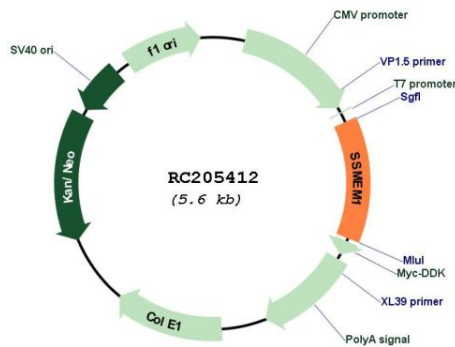
UniProt ID: [Q8WWF3](#)

Cytogenetics: 7q32.2

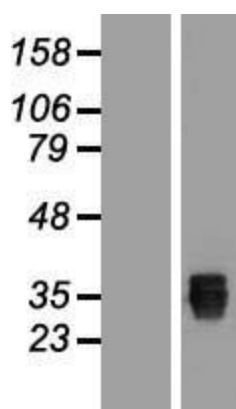
Protein Families: Transmembrane

MW: 28.2 kDa

Product images:



Circular map for RC205412



Western blot validation of overexpression lysate (Cat# [LY407993]) using anti-DDK antibody (Cat# [TA50011-100]). Left: Cell lysates from untransfected HEK293T cells; Right: Cell lysates from HEK293T cells transfected with RC205412 using transfection reagent MegaTran 2.0 (Cat# [TT210002]).