

## Product datasheet for **RC205346**

### PPP2R1B (NM\_181699) Human Tagged ORF Clone

#### Product data:

Product Type:	Expression Plasmids
Product Name:	PPP2R1B (NM_181699) Human Tagged ORF Clone
Tag:	Myc-DDK
Symbol:	PPP2R1B
Synonyms:	PP2A-Abeta; PR65B
Mammalian Cell Selection:	Neomycin
Vector:	pCMV6-Entry (PS100001)
E. coli Selection:	Kanamycin (25 ug/mL)



[View online »](#)

ORF Nucleotide  
Sequence:

>RC205346 ORF sequence  
Red=Cloning site Blue=ORF Green=Tags(s)

TTTTGTAATACGACTCACTATAGGGCGGCCGGGAATTCGTCGACTGGATCCGGTACCGAGGAGATCTGCC  
GCCGCGATCGCC

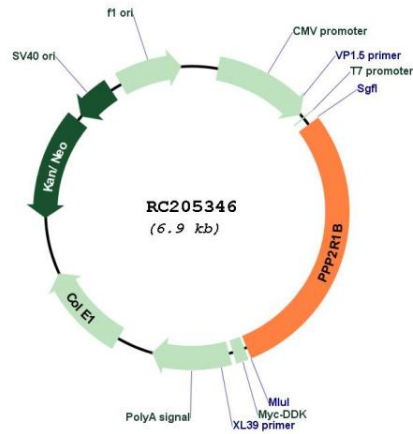
ATGGCGGGCGCATCAGAGCTCGGGACCGCCAGGAGCAGCGGGTGGAGATGGAGATGATTCGCTATACC  
CGATCGCGGTTTTAATCGACGAGCTCCGCAATGAAGACGTGCAGTCCGACTCAACAGTATTAAGAAGTT  
ATCAACAATTGCCCTAGCACTTGGAGTAGAAAAGGACCCGAAGTGAATTGTTGCCATTTCTTACAGATACA  
ATTTATGATGAAGATGAGGTACTATTAGCTCTTGTCTGAGCAGCTGGGAAATTTCACTGGCCTAGTGGGAG  
GTCCTGACTTTGCCACTGTCTGCTGCCTCCTTTGGAAAATCTGGCAACTGTGGAAGAGACTGTTGTTCCG  
TGACAAGGCTGTGGAGTCCCTGAGACAGATCTCCAGGAGCATACTCCTGTTGCTCTGGAAGCTTATTTT  
GTACCTCTGGTGAACGCTTAGCAAGTGGGGATTGGTTACCTCTCGCACATCTGCATGTGGTTTGTTC  
GCGTTTGTCTATCCAGGGCATCAAATGCTGTTAAAGCAGAAATCAGACAGCAATTCGGTTCCTGTGCTC  
AGATGACACACCAATGGTACGACGTGCTGCTGCTCCAAATGGGTGAATTTGCAAAAGTTTGGAAATTA  
GACAGTGTGAAAAGTGAATTTGCCACTGTCTACTAGCTTACAGTGAACAGGATTACAGTGCGCC  
TCCTTGCTGTGGAAGCTTGTGTCAGTATTGCCAGTATTGTCTCAGGATGACCTTGAGACTTTGGTGTAT  
GCCTACACTTCGACAAGCAGCAGAAGATAAATCTTGGCGGTTCCGCTATATGGTGGCTGACAGATTTTCA  
GAGCTCCAGAAAGCCATGGGTCTAAAAACACCCTAAATGACCTCATCCCCGCTTTTCCAGAACTACTTA  
AAGACTGTGAAGTGAAGTCCGGGCTGCTGCTGCCACAAAGTAAAAGAAGTGGTGAGAAGTGGCCAT  
TGAAGTAGAGAGACCATAATTAATGAATCAAATCTGCCTTATATAAAGGAATTAGTATCCGATACCAAT  
CAACATGTCAAATCGGCTCTAGCTTCTGTAATTAATGGGATTGTCTACTATTTGGCAAAGAAAAATACCA  
TTGAACATCTTCTACCTCTTTTCTTAGCTCAGTTAAAGGATGAGTGTCCGACGTTGTTGATATCAT  
CTCCAATTTGGATTGTGTAATGAAGTATTGGAATCCGTCAGCTCTCTCAGTCTCTCCTTCCCTGCCATA  
GTGGAGCTGGCAGAAGATGCCAAATGGAGGTCGCCCTGGCCATCATTGAGTATATGCCGCTGCTGGCAG  
GCCAGCTGGGTGTGGAATCTTTGATGAAAAGCTGAATCTTTATGTATGGCTTGGCTCGTGGACCATGT  
ATACGCCATCCGAGAAGCTGCCACCAACACCTCATGAACTAGTTCAGAAGTTTGGTACAGAGTGGGCC  
CAAATACTATTGTTCCCAAAGTGTAGTAATGGCAAATGATCCTAATTACTTGCATAGAATGACCACTT  
TATTCTGCATTAATGCACTGTCTGAGGCTGTGGTCAGGAAATACTACTAAGCAAATGCTGCCATCGT  
ATTAATAATGGCAGGAGACCAAGTAGCAAATGTTGCTTCAATGTGGCAAATCTCTACAAAAGATTGGA  
CCAATTCTAGATACCAATGCTTTACAGGGAGAAGTGAAGCCAGTACTACAGAAGTTAGGTCAAGATGAAG  
ACATGGATGTCAAATACTTTGCACAGGAAGCTATAAGTGTGGTGGCACAAGGCTGAGGAAGCTAGAATT  
TCTGTGAAGGACAGTGGAGAACCAGTGTCCCTCGGGCTGACAAGAACCACTTCCCAAGACCCACAGTG  
CCTGGAGAGGACATGGGGAAGGGACAGTGTATCAGTTGCGTGGAGATACTAGAGACACACTTGGCCAGC  
TGGGAATTGCAGAGCTAGTGCATTTCTCCAAAGCACAGAC

ACGCGTACGCGGCCGCTCGAGCAGAACTCATCTCAGAAGAGGATCTGGCAGCAAATGATATCCTGGATT  
ACAAGGATGACGACGATAAGGTTTAA

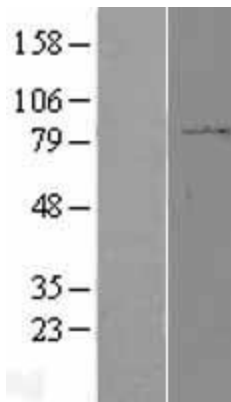


<b>Reconstitution Method:</b>	<ol style="list-style-type: none"><li>1. Centrifuge at 5,000xg for 5min.</li><li>2. Carefully open the tube and add 100ul of sterile water to dissolve the DNA.</li><li>3. Close the tube and incubate for 10 minutes at room temperature.</li><li>4. Briefly vortex the tube and then do a quick spin (less than 5000xg) to concentrate the liquid at the bottom.</li><li>5. Store the suspended plasmid at -20°C. The DNA is stable for at least one year from date of shipping when stored at -20°C.</li></ol>
<b>RefSeq:</b>	<a href="#">NM_181699.3</a>
<b>RefSeq Size:</b>	2161 bp
<b>RefSeq ORF:</b>	2004 bp
<b>Locus ID:</b>	5519
<b>UniProt ID:</b>	<a href="#">P30154</a>
<b>Cytogenetics:</b>	11q23.1
<b>Protein Families:</b>	Druggable Genome, Phosphatase, Transcription Factors
<b>Protein Pathways:</b>	Long-term depression, Oocyte meiosis, TGF-beta signaling pathway, Tight junction, Wnt signaling pathway
<b>MW:</b>	73.6 kDa
<b>Gene Summary:</b>	<p>This gene encodes a constant regulatory subunit of protein phosphatase 2. Protein phosphatase 2 is one of the four major Ser/Thr phosphatases, and it is implicated in the negative control of cell growth and division. It consists of a common heteromeric core enzyme, which is composed of a catalytic subunit and a constant regulatory subunit, that associates with a variety of regulatory subunits. The constant regulatory subunit A serves as a scaffolding molecule to coordinate the assembly of the catalytic subunit and a variable regulatory B subunit. This gene encodes a beta isoform of the constant regulatory subunit A. Mutations in this gene have been associated with some lung and colon cancers. Alternatively spliced transcript variants have been described. [provided by RefSeq, Apr 2010]</p>

Product images:



Circular map for RC205346



Western blot validation of overexpression lysate (Cat# [LY403624]) using anti-DDK antibody (Cat# [TA50011-100]). Left: Cell lysates from untransfected HEK293T cells; Right: Cell lysates from HEK293T cells transfected with RC205346 using transfection reagent MegaTran 2.0 (Cat# [TT210002]).