

## Product datasheet for RC205241

### MMD (NM\_012329) Human Tagged ORF Clone

#### Product data:

Product Type:	Expression Plasmids
Product Name:	MMD (NM_012329) Human Tagged ORF Clone
Tag:	Myc-DDK
Symbol:	MMD
Synonyms:	MMA; MMD1; PAQR11
Mammalian Cell Selection:	Neomycin
Vector:	pCMV6-Entry (PS100001)
E. coli Selection:	Kanamycin (25 ug/mL)
ORF Nucleotide Sequence:	>RC205241 ORF sequence Red=Cloning site Blue=ORF Green=Tags(s)

TTTTGTAATACGACTCACTATAGGGCGCCGGAATTCGTCGACTGGATCCGGTACCGAGGAGATCTGCC  
GCC**CGATCGCC**

ATGCGGTTCAAGAATCGATTCCAGCGGTTTCATGAACCATCGAGCTCCAGCCAATGGCCGCTACAAGCCAA  
CTTGCTATGAACATGCTGCTAACTGTTACACACACGCATTCTCATTGTTCCGGCCATCGTGGGCAGTGC  
CCTCCTCCATCGGCTGTCTGATGACTGCTGGGAAAAGATAACAGCATGGATTTATGGAATGGGACTCTGT  
GCCCTTTCATCGTTTACAGTATTTACATTGTATCATGGAAAAGAGCCACTTAAGGACAGTGGAGC  
ATTGTTTTACATGTGTGATAGAATGGTTATCTATTTCTCATTGCTGCTCTTATGCTCCATGGTTAAA  
TCTTCGTGAACCTGGACCCTGGCATCTCATATGCGTTGGTTTATCTGGCTCATGGCAGCTGGAGGAACC  
ATTTATGTATTTCTTACCATGAAAAATAAGGTGGTTGAACCTTTTTCTATCTCACAATGGGATTCT  
CTCCAGCCTTGGTGGTGACATCAATGAACAACCCGATGGACTTCAGGAACCTTGCCCTGTGGGGGCTTAAT  
TTATTGCTGGGAGTTGTGTTCTCAAGAGTGATGGCATCATTCCATTTGCCACGCCATCTGGCACCTG  
TTTGTGGCCACGGCAGCTGCAGTGCATTACTACGCCATTTGAAATACCTTTACCGAAGTCTACGGACT  
TTATGCGGCATTTA

**ACGCGT**ACGCGGCCGCTCGAGCAGAACTCATCTCAGAAGAGGATCTGGCAGCAAATGATATCTGGATT  
ACAAGGATGACGACGATAAGGTTTAA



[View online »](#)

Protein Sequence: >RC205241 protein sequence  
 Red=Cloning site Green=Tags(s)

MRFKNRFQRFMNHRA PANGRYKPTCYEHAANCYTHAFLIVPAIVGSALLHRLSDDCWEKITAWIYGMGLC  
 ALFIVSTVFHIVSWKKS LRTVEHCFHMDRMVIYFFIAASYAPWLNLRGLPLASHMRWFIWLMAAGGT  
 IYVFLYHEKYKVVELFFYLTMGFSPALVVTSMNNTDGLQELACGGLIYCLGVVFFKSDGIIPFAHAIWHL  
 FVATAAAVHYIAIWKYL YRSPTDFMRHL

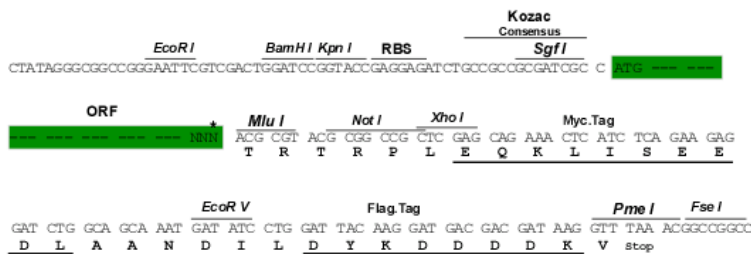
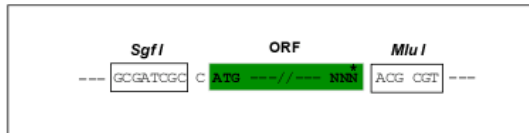
TRTRPLEQKLISEEDLAANDILDYKDDDDKV

Chromatograms: [https://cdn.origene.com/chromatograms/mk6312\\_d09.zip](https://cdn.origene.com/chromatograms/mk6312_d09.zip)

Restriction Sites: SgfI-MluI

Cloning Scheme:

Cloning sites used for ORF Shuttling:



\* The last codon before the Stop codon of the ORF

ACCN: NM\_012329

ORF Size: 714 bp

OTI Disclaimer: The molecular sequence of this clone aligns with the gene accession number as a point of reference only. However, individual transcript sequences of the same gene can differ through naturally occurring variations (e.g. polymorphisms), each with its own valid existence. This clone is substantially in agreement with the reference, but a complete review of all prevailing variants is recommended prior to use. [More info](#)

OTI Annotation: This clone was engineered to express the complete ORF with an expression tag. Expression varies depending on the nature of the gene.

Components: The ORF clone is ion-exchange column purified and shipped in a 2D barcoded Matrix tube containing 10ug of transfection-ready, dried plasmid DNA (reconstitute with 100 ul of water).

**Reconstitution Method:**

1. Centrifuge at 5,000xg for 5min.
2. Carefully open the tube and add 100ul of sterile water to dissolve the DNA.
3. Close the tube and incubate for 10 minutes at room temperature.
4. Briefly vortex the tube and then do a quick spin (less than 5000xg) to concentrate the liquid at the bottom.
5. Store the suspended plasmid at -20°C. The DNA is stable for at least one year from date of shipping when stored at -20°C.

**RefSeq:** [NM\\_012329.3](#)

**RefSeq Size:** 2723 bp

**RefSeq ORF:** 717 bp

**Locus ID:** 23531

**UniProt ID:** [Q15546](#)

**Cytogenetics:** 17q22

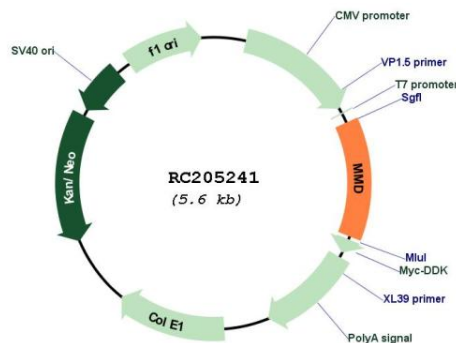
**Domains:** UPF0073

**Protein Families:** Druggable Genome, Ion Channels: Other, Transmembrane

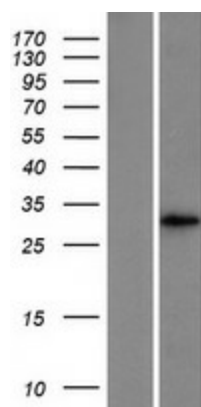
**MW:** 27.7 kDa

**Gene Summary:** This protein is expressed by in vitro differentiated macrophages but not freshly isolated monocytes. Although sequence analysis identifies seven potential transmembrane domains, this protein has little homology to G-protein receptors and it has not been positively identified as a receptor. A suggested alternative function is that of an ion channel protein in maturing macrophages. [provided by RefSeq, Jul 2008]

### Product images:



Circular map for RC205241



Western blot validation of overexpression lysate (Cat# [LY415826]) using anti-DDK antibody (Cat# [TA50011-100]). Left: Cell lysates from untransfected HEK293T cells; Right: Cell lysates from HEK293T cells transfected with RC205241 using transfection reagent MegaTran 2.0 (Cat# [TT210002]).