

## Product datasheet for **RC205057**

### **FAM151A (NM\_176782) Human Tagged ORF Clone**

#### **Product data:**

Product Type:	Expression Plasmids
Product Name:	FAM151A (NM_176782) Human Tagged ORF Clone
Tag:	Myc-DDK
Symbol:	FAM151A
Synonyms:	C1orf179
Mammalian Cell Selection:	Neomycin
Vector:	pCMV6-Entry (PS100001)
E. coli Selection:	Kanamycin (25 ug/mL)



[View online »](#)

**ORF Nucleotide Sequence:**

>RC205057 ORF sequence  
 Red=Cloning site Blue=ORF Green=Tags(s)

TTTTGTAATACGACTCACTATAGGGCGGCCGGGAATTCGTCGACTGGATCCGGTACCGAGGAGATCTGCC  
 GCC**GCGATCGCC**

ATGGTCTGACGGGAGCAGTTATCAAAGAATCAGGTCAAGTGGGTGTTGCCGGCATTACCTGTGTGTCTG  
 TGGTGGTCATTGCGCAATAGTCTTGCCATCACCTGCGGCGGCCAGGCTGTGAGCTGGAGGCCTGCAG  
 CCCTGATGCCGACATGCTGGACTACCTGCTGAGCCTGGGCCAGATCAGCCGGCGAGATGCCTTGGAGGTC  
 ACCTGGTACCACGCAGCCAACAGCAAGAAAGCCATGACAGCTGCCCTGGACAGCAACATCACAGTCTGG  
 AGGCTGACGTCAATGTAGAAGGGCTCGGCACAGCCAATGAGACAGGAGTCCCATCATGGCACACCCCC  
 CACTACCTACAGTGACAACACTGGAGCAGTGGCTGGACGCTGTGCTGGGCTCTCCCAAAAGGGCATC  
 AACTGGACTTCAAGAACATCAAGGCAGTGGGCCCTCCCTGGACCTCCTGCGGCAGCTGACAGAGGAAG  
 GCAAAGTCCGGCGGCCATATGGATCAACGCTGACATCTTAAAGGGCCCCAACATGCTCATCTCAACTGA  
 GGTCATGCCACACAGTTCCTGGCCCTGGTCCAGGAGAAGTATCCAAGGCTACCCTATCTCCAGGCTGG  
 ACCACCTTCTACATGTCCACGTCCCAACAGGACGTACACCAAGCCATGGTGGAGAAGATGCACGAGC  
 TGGTGGGAGGAGTGCCCCAGAGGGTACCTTCCCTGTACGGTCTTCCATGGTGGGGCTGCCTGGCCCCA  
 CTTGAGCTGGCTGCTGAGCCAATCTGAGAGGTACAGCCTGACGCTGTGGCAGGCTGCCTCGGACCCCATG  
 TCGGTGGAAGATCTGCTCTACGTCGGGATAAAGTGTGCTCCACCAAGTCTACTATGACATCTTTGAGC  
 CTCTCCTGTACAGTTCAAGCAGCTGGCCTTGAATGCCACACGGAAACCAATGTACTACACGGGAGGCAG  
 CCTGATCCCTCTTCTCCAGCTGCCTGGGGATGACGGTCTGAATGTGGAGTGGCTGGTTCCTGACGTCCAG  
 GGCAGCGGTAACAACAGCAACAATGACCCTCCAGACACAGAAGGCATGATCCTGCTGAACACTGGCCTCG  
 AGGAACTGTGGCTGAAAACCCCGTGGCCATTGTTTACTCACTCAAGTGGCAACATCCTGACGCTGGAGTC  
 CTGCCTGCAGCAGCTGGCCACACATCCCGGACACTGGGGCATCCATTTGCAAATAGTGGAGCCCGCAGCC  
 CTCGGCCATCCCTGGCCTTGTGGCACGCTCTCCAGCCTTGGCCTCTTGCATTGGCCTGTGTGGGTTG  
 GGGCAAAATCTCCACGGGAGTTTTTCGGTCCCGGCCATGTGGCTGGCAGAGAGCTGCTTACAGCTGT  
 GGCTGAGGCTTCCCGCAGTACTGTGGCACCAGGCTGGCCTGAGGAGGTGCTGGGCAGTGGCTACAGG  
 GAACAGCTGCTCACAGATATGCTAGAGTTGTGCCAGGGCTCTGGCAACCTGTGCTCCTCCAGATGCAGG  
 CCATGCTGCTGGCCACAGCACAGCTGGAGCCATAGGCAGGCTGCTGGCATCCTCCCCCGGGCCACCGT  
 CACAGTGGAGCACAACCCAGCTGGGGCGACTATGCCTCTGTGAGGACAGCATTGCTGGCAGCTAGGGCT  
 GTGGACAGGACCCGAGTCTACTACAGGCTACCCAGGGCTACCACAAGGACTTGTGGCTCATGTTGGTA  
 GAAAC

**ACGCGT**ACGCGGCGGCTCGAGCAGAAACTCATCTCAGAAGAGGATCTGGCAGCAAATGATATCCTGGATT  
 ACAAGGATGACGACGATAAGGTTTAA

**Protein Sequence:**

>RC205057 protein sequence  
 Red=Cloning site Green=Tags(s)

MVCREQLSKNQVKWFAGITCVSVVIAAIVLAITLRRPGCELEACSPDADMLDYLLSLGQISRRDALEV  
 TWYHAANSKKAMTAALDSNITVLEADVNEGLGTANETGVPIMAHPPPTYSDNTLEQWLDAVLGSSQKGI  
 KLDFKNIAVGPSLDLLRQLTEEGVRRPIWINADILKGNMLISTEVNATQFLALVQEKYPKATLSPGW  
 TTFYMSTSPNRTYTQAMVEKMHEL VGGVPQRVTFPVRSSMVRAAWPHFSWLLSQSERYSLTLWQAASDPM  
 SVEDLLYVRDNTAVHQVYYDIFEPLLSQFKQLALNATRKPMYYTGGSLIPLLQLPGDDGLNVEWLVPDVQ  
 GSGKTATMTLPDTEGMILLNTGLEGTVAENPVPIVHTPSGNILTLESCLQLATHPGHWGIHLQIVEPAA  
 LRPSLALLARLSSLGLLHWPVWVGAKISHGSFVPGHVAGRELLTAVAEVFPHTVAPGWPEEVLGSGYR  
 EQLLTDMLELCQGLWQPVSFQMAMLLGHSTAGAIGRLLASSPRATVTVVHNPAAGDYASVRTALLAARA  
 VDRTRVYRPLPQGYHKDLLAHVGRN

**TRTRPLEQKLI**SEEDLAANDILDYKDDDDKV

**Chromatograms:**

[https://cdn.origene.com/chromatograms/mk6549\\_f06.zip](https://cdn.origene.com/chromatograms/mk6549_f06.zip)

Restriction Sites: SgfI-MluI

Cloning Scheme:



ACCN: NM\_176782

ORF Size: 1755 bp

OTI Disclaimer: The molecular sequence of this clone aligns with the gene accession number as a point of reference only. However, individual transcript sequences of the same gene can differ through naturally occurring variations (e.g. polymorphisms), each with its own valid existence. This clone is substantially in agreement with the reference, but a complete review of all prevailing variants is recommended prior to use. [More info](#)

OTI Annotation: This clone was engineered to express the complete ORF with an expression tag. Expression varies depending on the nature of the gene.

Components: The ORF clone is ion-exchange column purified and shipped in a 2D barcoded Matrix tube containing 10ug of transfection-ready, dried plasmid DNA (reconstitute with 100 ul of water).

Reconstitution Method:

1. Centrifuge at 5,000xg for 5min.
2. Carefully open the tube and add 100ul of sterile water to dissolve the DNA.
3. Close the tube and incubate for 10 minutes at room temperature.
4. Briefly vortex the tube and then do a quick spin (less than 5000xg) to concentrate the liquid at the bottom.
5. Store the suspended plasmid at -20°C. The DNA is stable for at least one year from date of shipping when stored at -20°C.

RefSeq: [NM\\_176782.1](#), [NP\\_788954.1](#)

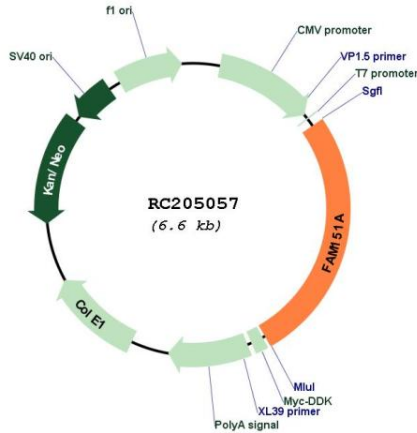
RefSeq Size: 1998 bp

RefSeq ORF: 1758 bp

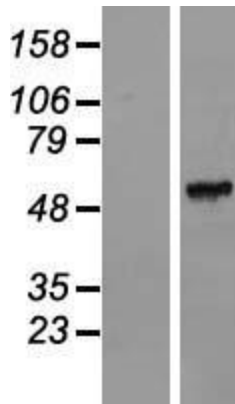
Locus ID: 338094

UniProt ID: [Q8WW52](#)  
 Protein Families: Transmembrane  
 MW: 64 kDa

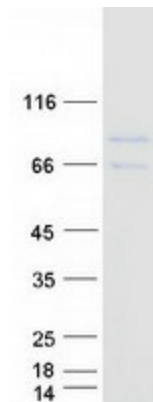
**Product images:**



Circular map for RC205057



Western blot validation of overexpression lysate (Cat# [LY406181]) using anti-DDK antibody (Cat# [TA50011-100]). Left: Cell lysates from untransfected HEK293T cells; Right: Cell lysates from HEK293T cells transfected with RC205057 using transfection reagent MegaTran 2.0 (Cat# [TT210002]).



Coomassie blue staining of purified FAM151A protein (Cat# [TP305057]). The protein was produced from HEK293T cells transfected with FAM151A cDNA clone (Cat# RC205057) using MegaTran 2.0 (Cat# [TT210002]).