

Product datasheet for RC204965

Casein Kinase 1 delta (CSNK1D) (NM_139062) Human Tagged ORF Clone

Product data:

Product Type:	Expression Plasmids
Product Name:	Casein Kinase 1 delta (CSNK1D) (NM_139062) Human Tagged ORF Clone
Tag:	Myc-DDK
Symbol:	Casein Kinase 1 delta
Synonyms:	ASPS; CKI-delta; CKId; CKIdelta; FASPS2; HCKID
Mammalian Cell Selection:	Neomycin
Vector:	pCMV6-Entry (PS100001)
E. coli Selection:	Kanamycin (25 ug/mL)
ORF Nucleotide Sequence:	>RC204965 ORF sequence Red=Cloning site Blue=ORF Green=Tags(s)

TTTTGTAATACGACTCACTATAGGGCGGCCGGAATTCGTCGACTGGATCCGGTACCGAGGAGATCTGCC
GCC**CGATCGCC**

ATGGAGCTGAGAGTCGGGAACAGGTACCGGCTGGGCCGGAAGATCGGCAGCGGCTCCTTCGGAGACATCT
ATCTCGGTACGGACATTGCTGCAGGAGAAGAGTTGCCATCAAGCTTGAATGTGTCAAACCAAACACCC
TCAGCTCCACATTGAGAGCAAAATCTACAAGATGATGCAGGGAGGAGTGGGCATCCCCACCATCAGATGG
TGGGGGGCAGAGGGGACTACAACGTATGGTGTGGAGCTGCTGGGGCCAAGCCTGGAGGACCTCTTCA
ACTTCTGTCCAGGAAATTCAGCCTCAAACCGTCTGCTGCTTGTGACCAAATGATCAGTCGCATCGA
ATACATTCATTCAAAGAACTTATCCACCGGGATGTGAAGCCAGACAACCTCCTCATGGGCTGGGGGAG
AAGGGCAACCTGGTGTACATCATCGACTTCGGGCTGGCCAAGAAGTACCGGGATGCACGCACCCACCAGC
ACATCCCCTATCGTGAGAACAAGAACCTCACGGGGACGGCGCGGTACGCCTCCATCAACACGCACCTTGG
AATTGAACAATCCCGAAGAGATGACTTGGAGTCTCTGGGCTACGTGCTAATGTACTTCAACCTGGGCTCT
CTCCCCTGGCAGGGGCTGAAGGCTGCCACCAAGAGACAGAAATACGAAAGGATTAGCGAGAAGAAAATGT
CCACCCCATCGAAGTGTGTGTAAGGCTACCCTTCCGAATTTGCCACATACCTGAATTTCTGCCGTTCT
CTTGCCTTTTGACGACAAGCCTGACTACTCGTACCTGCGGCAGCTTTTCCGGAATCTGTTCCATCGCCAG
GGCTTCTCCTATGACTACGTGTTTCGACTGGAACATGCTCAAATTTGGTGCCAGCCGGGCCCGATGACG
CCGAGCGGGAGCCAGGGACCGAGAGGAGCGGCTGAGACACTCGCGGAACCCGGCTACCCGCGGCCTCCC
TTCCACAGCCTCCGGCCGCTGCGGGGGACGCAGGAAGTGGCTCCCCCACACCCCTCACCCCTACCTCA
CACACGGCTAACACCTCCCCCGGCCGCTCCTCCGCATGGAGAGAGAGCGGAAAGTGAGTATGCGGCTGC
ACCGCGGGGCCCGTCAACATCTCCTCGTCCGACCTCACAGGCCGACAAGATACCTCTCGCATGTCCAC
CTCACAGAATAGCATTCTTTTGAACACCACGGCAAG

ACGGTACGCGGCCGCTCGAGCAGAACTCATCTCAGAAGAGGATCTGGCAGCAAATGATATCTGGATT
ACAAGGATGACGACGATAAGGTTTAA



Protein Sequence: >RC204965 protein sequence
 Red=Cloning site Green=Tags(s)

MELRVGNRYRLGRKIGSGSFGDIYLGTDIAAGEEVAIKLECVKTKHPQLHIESKIYKMMQGGVGIPTIRW
 CGAEGDYNVMVMEELLGPSLEDLNFCSRKFSKLTVLLADQMISRIEYIHSKNFIHRDVKPDNFMGLGK
 KGNLVYIIDFGLAKKYRDARTHQHIPYRENKNTGTARYASINHLGIEQSRDDLES LGYVLMYFNLGS
 LPWQGLKAATKRQKYERISEKKMSTPIEVLCKGYPSEFATYLNFCRSLRFDDKPDYSYLRQLFRNLFHRQ
 GFSYDYVFDWNMLKFGASRAADDAERERRDREERLRHSRNPATRGLPSTASGRLRGTQEVAPPTPLTPTS
 HTANTSPRPVSGMERERKYSMRLHRGAPVNISSDLTGRQDTSRMSTSQNSIPFEHHGK

TRTRPLEQKLISEEDLAANDILDYKDDDDKV

Chromatograms: https://cdn.origene.com/chromatograms/mk6425_b06.zip

Restriction Sites: SgfI-MluI

Cloning Scheme:



ACCN: NM_139062

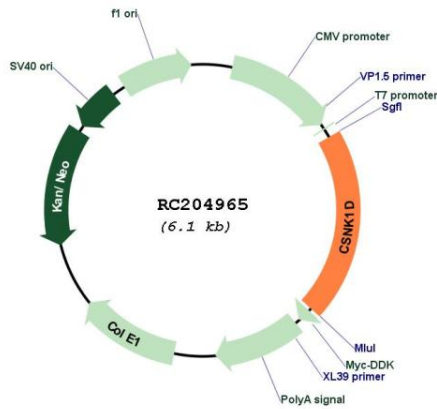
ORF Size: 1227 bp

OTI Disclaimer: Due to the inherent nature of this plasmid, standard methods to replicate additional amounts of DNA in E. coli are highly likely to result in mutations and/or rearrangements. Therefore, OriGene does not guarantee the capability to replicate this plasmid DNA. Additional amounts of DNA can be purchased from OriGene with batch-specific, full-sequence verification at a reduced cost. Please contact our customer care team at custsupport@origene.com or by calling 301.340.3188 option 3 for pricing and delivery.

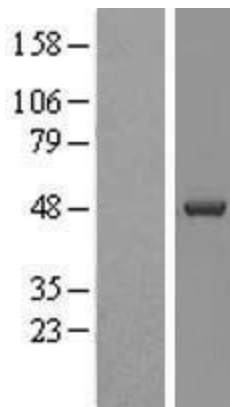
The molecular sequence of this clone aligns with the gene accession number as a point of reference only. However, individual transcript sequences of the same gene can differ through naturally occurring variations (e.g. polymorphisms), each with its own valid existence. This clone is substantially in agreement with the reference, but a complete review of all prevailing variants is recommended prior to use. [More info](#)

OTI Annotation:	This clone was engineered to express the complete ORF with an expression tag. Expression varies depending on the nature of the gene.
Components:	The ORF clone is ion-exchange column purified and shipped in a 2D barcoded Matrix tube containing 10ug of transfection-ready, dried plasmid DNA (reconstitute with 100 ul of water).
Reconstitution Method:	<ol style="list-style-type: none">1. Centrifuge at 5,000xg for 5min.2. Carefully open the tube and add 100ul of sterile water to dissolve the DNA.3. Close the tube and incubate for 10 minutes at room temperature.4. Briefly vortex the tube and then do a quick spin (less than 5000xg) to concentrate the liquid at the bottom.5. Store the suspended plasmid at -20°C. The DNA is stable for at least one year from date of shipping when stored at -20°C.
RefSeq:	NM_139062.4
RefSeq Size:	3778 bp
RefSeq ORF:	1230 bp
Locus ID:	1453
UniProt ID:	P48730
Cytogenetics:	17q25.3
Domains:	pkinase, TyrKc, S_TKc
Protein Families:	Druggable Genome, Protein Kinase
Protein Pathways:	Circadian rhythm - mammal, Gap junction, Hedgehog signaling pathway
MW:	46.8 kDa
Gene Summary:	This gene is a member of the casein kinase I (CKI) gene family whose members have been implicated in the control of cytoplasmic and nuclear processes, including DNA replication and repair. The encoded protein may also be involved in the regulation of apoptosis, circadian rhythm, microtubule dynamics, chromosome segregation, and p53-mediated effects on growth. The encoded protein is highly similar to the mouse and rat CK1 delta homologs. Three transcript variants encoding different isoforms have been found for this gene. [provided by RefSeq, Feb 2014]

Product images:



Circular map for RC204965



Western blot validation of overexpression lysate (Cat# [LY408409]) using anti-DDK antibody (Cat# [TA50011-100]). Left: Cell lysates from untransfected HEK293T cells; Right: Cell lysates from HEK293T cells transfected with RC204965 using transfection reagent MegaTran 2.0 (Cat# [TT210002]).