

Product datasheet for RC204904

SERPINE2 (NM_006216) Human Tagged ORF Clone

Product data:

Product Type:	Expression Plasmids
Product Name:	SERPINE2 (NM_006216) Human Tagged ORF Clone
Tag:	Myc-DDK
Symbol:	SERPINE2
Synonyms:	GDN; GDNPF; PI-7; PI7; PN-1; PN1; PNI
Mammalian Cell Selection:	Neomycin
Vector:	pCMV6-Entry (PS100001)
E. coli Selection:	Kanamycin (25 ug/mL)
ORF Nucleotide Sequence:	>RC204904 ORF sequence Red=Cloning site Blue=ORF Green=Tags(s)

TTTTGTAATACGACTCACTATAGGGCGGCCGGAATTCGTCGACTGGATCCGGTACCGAGGAGATCTGCC
GCC**CGATCGCC**

ATGAAGTGGCATCTCCCTCTTCTCTTGGCCTCTGTGACGCTGCCTTCCATCTGCTCCCACTTCAATC
CTCTGTCTCTCGAGGAAGTAGGCTCCAACACGGGGATCCAGGTTTTCAATCAGATTGTGAAGTCGAGGCC
TCATGACAACATCGTGATCTCTCCCATGGGATTGCGTCGGTCTGGGGATGCTCAGCTGGGGCGGAC
GGCAGGACCAAGAAGCAGCTCGCCATGGTGATGAGATACGGCGTAAATGGAGTTGGTAAAATATTAAGA
AGATCAACAAGGCCATCGTCTCCAAGAAGAATAAAGACATTGTGACAGTGGCTAACGCCGTGTTGTAA
GAATGCCTCTGAAATTGAAGTGCCTTTTGTACAAGGAACAAAGATGTGTTCCAGTGTGAGTCCCGAAT
GTGAACCTTGAGGATCCAGCCTCTGCCTGTGATTCCATCAATGCATGGGTAAAAATGAAACCAGGGATA
TGATTGACAATCTGCTGTCCCGAGATCTTATTGATGGTGTGCTCACCAGACTGGTCTCGTCAACGCAGT
GTATTTCAAGGGTCTGTGGAAATCACGGTTCACCCGAGAACAACAAAGAAACGCACTTTTCGTGGCAGCC
GACGGGAAATCCTATCAAGTGCCAATGCTGGCCAGCTCTCCGTGTTCCGGTGTGGGTGACAAAGTGCC
CCAATGATTTATGGTACAATTCATTGAACTGCCTACCACGGGAAAGCATCAGCATGCTGATTGCACT
GCCGACTGAGAGCTCCACTCCGCTGTCTGCCATCATCCACACATCAGCACCAAGACCATAGACAGCTGG
ATGAGCATCATGGTGCCCAAGAGGGTGACGGTATCCTGCCAAGTTCACAGCTGTAGCACAACAGAT
TGAAGGAGCCGCTGAAAGTTCTTGGCATTACTGACATGTTTGATTTCATCAAAGGCAAAATTTGCAAAAAT
AACAACAGGGTCAGAAAACCTCCATGTTTCTCATATCTTGCAAAAAGCAAAAATTGAAGTCAGTGAAGAT
GGAACCAAGCTTCAGCAGCAACAACCTGCAATTCTCATTGCAAGATCATCGCTCCCTGGTTTATAGTAG
ACAGACCTTTTCTGTTTTTCATCCGACATAATCTACAGGTGCTGTGTTTTCATGGGCAGATAAACAA
ACCC

ACGCGTACGCGGCCGCTCGAGCAGAAACTCATCTCAGAAGAGGATCTGGCAGCAATGATATCCTGGATT
ACAAGGATGACGACGATAAGGTTTAA



[View online >](#)

Protein Sequence: >RC204904 protein sequence
Red=Cloning site Green=Tags(s)

MNWHLLPLFLLASVTLPSICSHFNPLSLEELGSNTGIQVFNQIVKSRPHDNIVISPHGIASVLGMLQLGAD
 GRITKKQLAMVMRYGVNGVGKILKKINKAIVSKKNKDIVTANAVFVKNASEIEVPFVTRNKDVFQCEVRN
 VNFEDPASACDSINAWVKNETRDMIDNLLSPDLIDGVLTRLVLVNAVYFKGLWKSRLFQENTKKRTFVAA
 DGKSYQVPMLAQLSVFRCGSTSAPNDLWYNFIELPYHGESISMLIALPTESSTPLSAIIPHISTKIDSW
 MSIMVPKRVQVILPKFTAQAQTLKEPLKVLGITDMFDDSSKANFAKITTSSENHSHILQKAKIEVSED
 GTKASAATTAILIARSSPPWFIVDRPFLFFIRHNPTGAVLFMGQINKP

TRTRPLEQKLISEEDLAANDILDYKDDDDKV

Chromatograms: https://cdn.origene.com/chromatograms/mk6062_d07.zip

Restriction Sites: SgfI-MluI

Cloning Scheme:



* The last codon before the Stop codon of the ORF

ACCN: NM_006216

ORF Size: 1194 bp

OTI Disclaimer: The molecular sequence of this clone aligns with the gene accession number as a point of reference only. However, individual transcript sequences of the same gene can differ through naturally occurring variations (e.g. polymorphisms), each with its own valid existence. This clone is substantially in agreement with the reference, but a complete review of all prevailing variants is recommended prior to use. [More info](#)

OTI Annotation: This clone was engineered to express the complete ORF with an expression tag. Expression varies depending on the nature of the gene.

Components: The ORF clone is ion-exchange column purified and shipped in a 2D barcoded Matrix tube containing 10ug of transfection-ready, dried plasmid DNA (reconstitute with 100 ul of water).

Reconstitution Method:

1. Centrifuge at 5,000xg for 5min.
2. Carefully open the tube and add 100ul of sterile water to dissolve the DNA.
3. Close the tube and incubate for 10 minutes at room temperature.
4. Briefly vortex the tube and then do a quick spin (less than 5000xg) to concentrate the liquid at the bottom.
5. Store the suspended plasmid at -20°C. The DNA is stable for at least one year from date of shipping when stored at -20°C.

RefSeq: [NM_006216.3](#)

RefSeq Size: 2259 bp

RefSeq ORF: 1197 bp

Locus ID: 5270

UniProt ID: [P07093](#)

Cytogenetics: 2q36.1

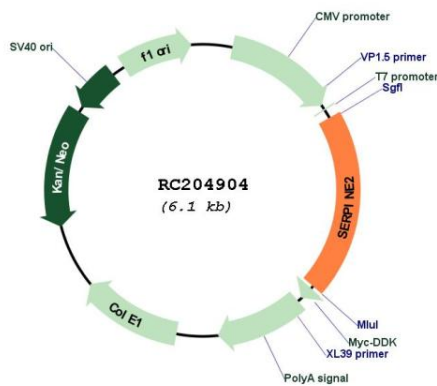
Domains: SERPIN

Protein Families: Druggable Genome, Secreted Protein

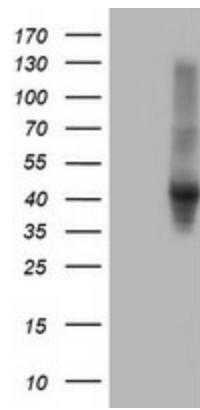
MW: 44 kDa

Gene Summary: This gene encodes a member of the serpin family of proteins, a group of proteins that inhibit serine proteases. Thrombin, urokinase, plasmin and trypsin are among the proteases that this family member can inhibit. This gene is a susceptibility gene for chronic obstructive pulmonary disease and for emphysema. Alternative splicing results in multiple transcript variants. [provided by RefSeq, Aug 2012]

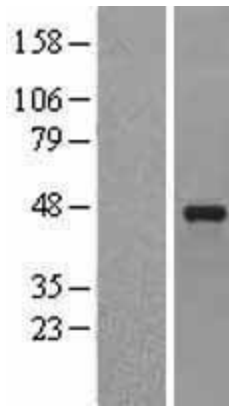
Product images:



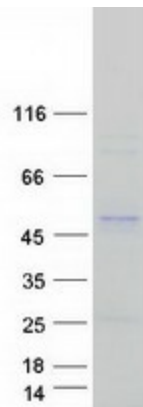
Circular map for RC204904



HEK293T cells were transfected with the pCMV6-ENTRY control (Cat# [PS100001], Left lane) or pCMV6-ENTRY SERPINE2 (Cat# RC204904, Right lane) cDNA for 48 hrs and lysed. Equivalent amounts of cell lysates (5 ug per lane) were separated by SDS-PAGE and immunoblotted with anti-SERPINE2(Cat# [TA504611]). Positive lysates [LY416795] (100ug) and [LC416795] (20ug) can be purchased separately from OriGene.



Western blot validation of overexpression lysate (Cat# [LY416795]) using anti-DDK antibody (Cat# [TA50011-100]). Left: Cell lysates from untransfected HEK293T cells; Right: Cell lysates from HEK293T cells transfected with RC204904 using transfection reagent MegaTran 2.0 (Cat# [TT210002]).



Coomassie blue staining of purified SERPINE2 protein (Cat# [TP304904]). The protein was produced from HEK293T cells transfected with SERPINE2 cDNA clone (Cat# RC204904) using MegaTran 2.0 (Cat# [TT210002]).