

## Product datasheet for **RC204898**

### IL2 Receptor gamma (IL2RG) (NM\_000206) Human Tagged ORF Clone

#### Product data:

Product Type:	Expression Plasmids
Product Name:	IL2 Receptor gamma (IL2RG) (NM_000206) Human Tagged ORF Clone
Tag:	Myc-DDK
Symbol:	IL2 Receptor gamma
Synonyms:	CD132; CIDX; IL-2RG; IMD4; P64; SCIDX; SCIDX1
Mammalian Cell Selection:	Neomycin
Vector:	pCMV6-Entry (PS100001)
E. coli Selection:	Kanamycin (25 ug/mL)
ORF Nucleotide Sequence:	>RC204898 ORF sequence Red=Cloning site Blue=ORF Green=Tags(s)

TTTTGTAATACGACTCACTATAGGGCGCCGGGAATTCGTCGACTGGATCCGGTACCGAGGAGATCTGCC  
GCC**CGATCGCC**

ATGTTGAAGCCATCATTACCATTACATCCCTCTTATTCTGCAGCTGCCCTGCTGGGAGTGGGGCTGA  
ACACGACAATTCTGACGCCCAATGGGAATGAAGACACCACAGCTGATTTCTTCTGACCACTATGCCAC  
TGACTCCCTCAGTGTTCCTACTGCCCCCTCCAGAGGTTCAAGTGTGGTCAATGTCGAGTACATG  
AATTGCACTTGGAAACAGCAGCTCTGAGCCCCAGCCTACCAACCTCACTCTGCATTATTGGTACAAGAACT  
CGGATAATGATAAAGTCCAGAAGTGCAGCCACTATCTATTCTCTGAAGAAATCACTTCTGGCTGTCAGTT  
GCAAAAAAAGGAGATCCACCTCTACCAACATTTGTTGTTTCAGCTCCAGGACCCACGGGAACCCAGGAGA  
CAGGCCACACAGATGCTAAAACCTGCAGAATCTGGTGATCCCTGGGCTCCAGAGAACCTAACACTTCACA  
AACTGAGTGAATCCCAGCTAGAAGTGAAGTGAACAACAGATTCTGAACCACTGTTGGAGCACTTGGT  
GCAGTACCGGACTGACTGGGACCACAGCTGGACTGAACAATCAGTGGATTATAGACATAAGTTCTCCTTG  
CCTAGTGTGGATGGGCAGAAACGCTACACGTTTCGTGTTTCGGAGCCGCTTAAACCACTCTGTGGAAGTG  
CTCAGCATTGGAGTGAATGGAGCCACCAATCCACTGGGGGAGCAATACTTCAAAGAGAATCCTTTCT  
GTTTGCATTGGAAGCCGTGGTTATCTCTGTTGGCTCCATGGGATTGATTATCAGCCTTCTCTGTGTGAT  
TTCTGGCTGGAACGGACGATGCCCGAATTCACCCCTGAAGAACCTAGAGGATCTGTTACTGAATACC  
ACGGGAACTTTTTCGGCCTGGAGTGGTGTCTAAGGGACTGGCTGAGAGTCTGCAGCCAGACTACAGTGA  
ACGACTCTGCCTCGTCAGTGAAGTTCACCCAAAAGGAGGGCCCTTGGGAGGGGCTGGGGCTCCCCA  
TGCAACCAGCATAGCCCTACTGGGCCCCCATGTTACACCCTAAAGCCTGAAACC

**ACGCGT**ACGCGGCCGCTCGAGCAGAAACTCATCTCAGAAGAGGATCTGGCAGCAATGATATCCTGGATT  
ACAAGGATGACGACGATAAGGTTAA



[View online »](#)

**Protein Sequence:** >RC204898 protein sequence  
Red=Cloning site Green=Tags(s)

MLKPSLPFTSLLFLQLPLLGVGLNTTILTPNGNEDTTADFFLTTPMPTDLSVSTLPLPEVQCFVFNVEYM  
 NCTWNSSSEPQPTNLTLHYWYKNSDNDKVQKCSHYLFSEEITSGCQLQKKEIHL YQTFVVQLQDPREPRR  
 QATQMLKLQNLVIPWAPENLTLHKLSESQLELNWNNRFLNHCLEHLVQYRTDWDHSWTEQSVDYRHKFSL  
 PSVDGQKRYTFRVRSRNFPLCGSAQHWSEWSHP IHWGSNTSKENPFLFALEAVVISVGSMLGIIISLLCVY  
 FWLERTMPRIPTLKNLEDLVTEYHGNSAWSGVSKGLAESLQPDYSERLCLVSEIPPKGGALGEGPGASP  
 CNQHSPYWAPPCYTLKPET

TRTRPLEQKLISEEDLAANDILDYKDDDDKV

**Chromatograms:** [https://cdn.origene.com/chromatograms/mk6062\\_g04.zip](https://cdn.origene.com/chromatograms/mk6062_g04.zip)

**Restriction Sites:** SgfI-MluI

**Cloning Scheme:**



\* The last codon before the Stop codon of the ORF

**ACCN:** NM\_000206

**ORF Size:** 1107 bp

**OTI Disclaimer:** The molecular sequence of this clone aligns with the gene accession number as a point of reference only. However, individual transcript sequences of the same gene can differ through naturally occurring variations (e.g. polymorphisms), each with its own valid existence. This clone is substantially in agreement with the reference, but a complete review of all prevailing variants is recommended prior to use. [More info](#)

**OTI Annotation:** This clone was engineered to express the complete ORF with an expression tag. Expression varies depending on the nature of the gene.

**Components:** The ORF clone is ion-exchange column purified and shipped in a 2D barcoded Matrix tube containing 10ug of transfection-ready, dried plasmid DNA (reconstitute with 100 ul of water).

**Reconstitution Method:**

1. Centrifuge at 5,000xg for 5min.
2. Carefully open the tube and add 100ul of sterile water to dissolve the DNA.
3. Close the tube and incubate for 10 minutes at room temperature.
4. Briefly vortex the tube and then do a quick spin (less than 5000xg) to concentrate the liquid at the bottom.
5. Store the suspended plasmid at -20°C. The DNA is stable for at least one year from date of shipping when stored at -20°C.

**RefSeq:** [NM\\_000206.3](#)

**RefSeq Size:** 1560 bp

**RefSeq ORF:** 1110 bp

**Locus ID:** 3561

**UniProt ID:** [P31785](#)

**Cytogenetics:** Xq13.1

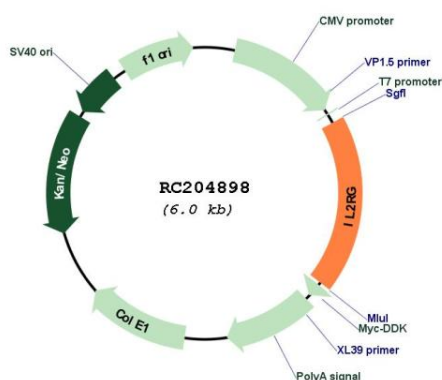
**Protein Families:** Druggable Genome, Transmembrane

**Protein Pathways:** Cytokine-cytokine receptor interaction, Endocytosis, Jak-STAT signaling pathway, Primary immunodeficiency

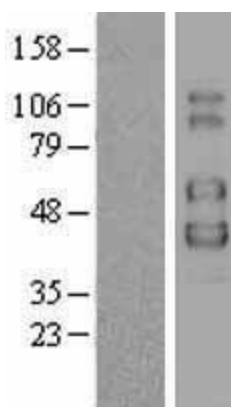
**MW:** 42.3 kDa

**Gene Summary:** The protein encoded by this gene is an important signaling component of many interleukin receptors, including those of interleukin -2, -4, -7 and -21, and is thus referred to as the common gamma chain. Mutations in this gene cause X-linked severe combined immunodeficiency (XSCID), as well as X-linked combined immunodeficiency (XCID), a less severe immunodeficiency disorder. [provided by RefSeq, Mar 2010]

### Product images:



Circular map for RC204898



Western blot validation of overexpression lysate (Cat# [LY400077]) using anti-DDK antibody (Cat# [TA50011-100]). Left: Cell lysates from untransfected HEK293T cells; Right: Cell lysates from HEK293T cells transfected with RC204898 using transfection reagent MegaTran 2.0 (Cat# [TT210002]).