

Product datasheet for **RC204506**

ULBP2 (NM_025217) Human Tagged ORF Clone

Product data:

Product Type:	Expression Plasmids
Product Name:	ULBP2 (NM_025217) Human Tagged ORF Clone
Tag:	Myc-DDK
Symbol:	ULBP2
Synonyms:	ALCAN-alpha; N2DL2; NKG2DL2; RAET1H; RAET1L
Mammalian Cell Selection:	Neomycin
Vector:	pCMV6-Entry (PS100001)
E. coli Selection:	Kanamycin (25 ug/mL)
ORF Nucleotide Sequence:	>RC204506 ORF sequence Red=Cloning site Blue=ORF Green=Tags(s)

TTTTGTAATACGACTCACTATAGGGCGCCGGGAATTCGTCGACTGGATCCGGTACCGAGGAGATCTGCC
GCC**CGATCGCC**

ATGGCAGCAGCCGCCGCTACCAAGATCCTTCTGTGCCTCCCGCTTCTGCTCCTGCTGTCCGGCTGGTCCC
GGGCTGGGCGAGCCGACCCTCACTCTTTGCTATGACATCACCGTCATCCCTAAGTTCAGACCTGGACC
ACGGTGGTGTGCGGTTCAAGGCCAGGTGGATGAAAAGACTTTTCTTCACTATGACTGTGGCAACAAGACA
GTCACACCTGTCAGTCCCCTGGGAAGAACTAAATGTCACAACGGCCTGGAAAGCACAGAACCCAGTAC
TGAGAGAGGTGGTGGACATACTTACAGAGCAACTGCGTGACATTCAGCTGGAGAATTACACACCCAAGGA
ACCCCTCACCTGCAGGCCAGGATGTCTTGTGAGCAGAAAAGCTGAAGGACACAGCAGTGGATCTTGGCAG
TTCAGTTTCGATGGGCAGATCTTCTCCTCTTTGACTCAGAGAAGAGAATGTGGACAACGGTTCATCCTG
GAGCCAGAAAAGATGAAAGAAAAGTGGGAGAATGACAAGGTTGTGGCCATGTCTTCCATTACTTCTCAAT
GGGAGACTGTATAGGATGGCTTGAGGACTTCTTGTGGGCATGGACAGCACCCCTGGAGCCAAGTGCAGGA
GCACCACTCGCCATGTCTCAGGCACAACCAACTCAGGGCCACAGCCACCACCCATCCTTTGCTGCC
TCCTCATCATCTCCCTGCTTCATCTCCTGGCATC

ACGCGTACGCGGCCGCTCGAGCAGAACTCATCTCAGAAGAGGATCTGGCAGCAAATGATATCCTGGATT
ACAAGGATGACGACGATAAGGTTTAA



[View online »](#)

Protein Sequence: >RC204506 protein sequence
Red=Cloning site Green=Tags(s)

MAAAAATKILLCLPLLLLLSGWSRAGRADPHSLCYDITVIPKFRPGRWCAVGGQVDEKTFLLHYDCGNKT
 VTPVSPLGKLLNVTTAWKAQNPVLRVVDILTEQLRDIQLENYTPKEPLTLQARMSCEQKAEGHSSGSWQ
 F5FDGQIFLLFDSEKRMWTTVHPGARKMKEKWENDKVVAMSFHYFSMGDCIGWLEDFLMGMDSTLEPSAG
 APLAMSSGTTQLRATATLILCCLLIILPCFILPGI

TRTRPLEQKLISEEDLAANDILDYKDDDDKV

Chromatograms: https://cdn.origene.com/chromatograms/mk6325_e07.zip

Restriction Sites: SgfI-MluI

Cloning Scheme:

Cloning sites used for ORF Shuttling:



* The last codon before the Stop codon of the ORF

ACCN: NM_025217

ORF Size: 738 bp

OTI Disclaimer: The molecular sequence of this clone aligns with the gene accession number as a point of reference only. However, individual transcript sequences of the same gene can differ through naturally occurring variations (e.g. polymorphisms), each with its own valid existence. This clone is substantially in agreement with the reference, but a complete review of all prevailing variants is recommended prior to use. [More info](#)

OTI Annotation: This clone was engineered to express the complete ORF with an expression tag. Expression varies depending on the nature of the gene.

Components: The ORF clone is ion-exchange column purified and shipped in a 2D barcoded Matrix tube containing 10ug of transfection-ready, dried plasmid DNA (reconstitute with 100 ul of water).

Reconstitution Method:

1. Centrifuge at 5,000xg for 5min.
2. Carefully open the tube and add 100ul of sterile water to dissolve the DNA.
3. Close the tube and incubate for 10 minutes at room temperature.
4. Briefly vortex the tube and then do a quick spin (less than 5000xg) to concentrate the liquid at the bottom.
5. Store the suspended plasmid at -20°C. The DNA is stable for at least one year from date of shipping when stored at -20°C.

RefSeq: [NM_025217.2](#), [NP_079493.1](#)

RefSeq Size: 1362 bp

RefSeq ORF: 741 bp

Locus ID: 80328

UniProt ID: [Q9BZM5](#)

Cytogenetics: 6q25.1

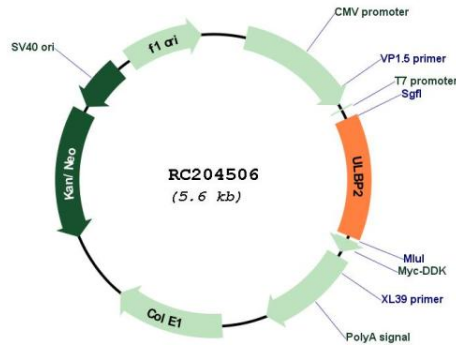
Protein Families: Druggable Genome, Secreted Protein, Transmembrane

Protein Pathways: Natural killer cell mediated cytotoxicity

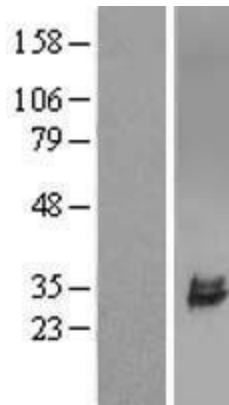
MW: 27.4 kDa

Gene Summary: This gene encodes a major histocompatibility complex (MHC) class I-related molecule that binds to the NKG2D receptor on natural killer (NK) cells to trigger release of multiple cytokines and chemokines that in turn contribute to the recruitment and activation of NK cells. The encoded protein undergoes further processing to generate the mature protein that is either anchored to membrane via a glycosylphosphatidylinositol moiety, or secreted. Many malignant cells secrete the encoded protein to evade immunosurveillance by NK cells. This gene is located in a cluster of multiple MHC class I-related genes on chromosome 6. [provided by RefSeq, Jul 2015]

Product images:



Circular map for RC204506



Western blot validation of overexpression lysate (Cat# [LY410831]) using anti-DDK antibody (Cat# [TA50011-100]). Left: Cell lysates from untransfected HEK293T cells; Right: Cell lysates from HEK293T cells transfected with RC204506 using transfection reagent MegaTran 2.0 (Cat# [TT210002]).