

## Product datasheet for **RC204498**

### **BCL2 (NM\_000633) Human Tagged ORF Clone**

#### Product data:

Product Type:	Expression Plasmids
Product Name:	BCL2 (NM_000633) Human Tagged ORF Clone
Tag:	Myc-DDK
Symbol:	BCL2
Synonyms:	Bcl-2; PPP1R50
Mammalian Cell Selection:	Neomycin
Vector:	pCMV6-Entry (PS100001)
E. coli Selection:	Kanamycin (25 ug/mL)
ORF Nucleotide Sequence:	>RC204498 representing NM_000633 Red=Cloning site Blue=ORF Green=Tags(s)

TTTTGTAATACGACTCACTATAGGGCGGCCGGAATTCGTCGACTGGATCCGGTACCGAGGAGATCTGCC  
GCC**CGATCGCC**

ATGGCGCACGCTGGGAGAACGGGTACGATAACCGGGAGATAGTGATGAAGTACATCCATTATAAGCTGT  
CGCAGAGGGGCTACGAGTGGATGCGGGAGATGTGGGCGCCGCGCCCCGGGGGCCCGCCCCGACCGGG  
CATCTTCTCTCCAGCCCGGGACACGCCCCATCCAGCCGCATCCCGGGACCCGGTCGCCAGGACCTCG  
CCGCTGCAGACCCCGGTGCCCGCGCCGCGCGGGGCTGCGCTCAGCCGGTGCCACCTGTGGTCC  
ACCTGACCCTCCGCCAGGCCGGCGACGACTTCTCCGCGCTACCGCCGCGACTTCGCCGAGATGTCCAG  
CCAGCTGCACCTGACGCCCTTACCAGCGCGGGGACGCTTTGCCACGGTGGTGGAGGAGCTTTCAGGGAC  
GGGTGAACTGGGGAGGATTGTGGCCTTCTTTGAGTTCGGTGGGGTCATGTGTGTGGAGAGCGTCAACC  
GGGAGATGTGCCCTGGTGGACAACATCGCCCTGTGGATGACTGAGTACCTGAACCGGCACCTGCACAC  
CTGGATCCAGGATAACGGAGGCTGGGATGCCTTTGTGAACTGTACGGCCCCAGCATGCGGCCTCTGTTT  
GATTTCTCTGGCTGTCTGAAGACTGTCTCAGTTTGGCCCTGGTGGGAGCTTGATCACCTGGGTG  
CCTATCTGGGCCACAAG

**ACGCGT**ACGCGGCCGCTCGAGCAGAACTCATCTCAGAAGAGGATCTGGCAGCAAATGATATCTGGATT  
ACAAGGATGACGACGATAAGGTTTAA



[View online »](#)

**Protein Sequence:** >RC204498 representing NM\_000633  
Red=Cloning site Green=Tags(s)

MAHAGRTGYDNREIVMKYIHYKLSQRGYEWDAGDVGAAAPGAAPAGIFSSQPGHTPHPAASRDVARTS  
 PLQTPAAPGAAAGPALSPVPPVVHLTLRQAGDDFSRRYRRDFAEMSSQLHLTPFTARGRFATVVEELFRD  
 GVNWGRIVAFFEFGGVMCVESVNREMSPLVDNIALWMTEYLNHRHLHTWIQDNGGWDAFVELYGPMSMRPLF  
 DFSWLSLKTLLSLALVGCITLGAYLGHK

TRTRPLEQKLISEEDLAANDILDYKDDDDKV

**Chromatograms:** [https://cdn.origene.com/chromatograms/mg3074\\_b08.zip](https://cdn.origene.com/chromatograms/mg3074_b08.zip)

**Restriction Sites:** SgfI-MluI

**Cloning Scheme:**

Cloning sites used for ORF Shuttling:



\* The last codon before the Stop codon of the ORF

**ACCN:** NM\_000633

**ORF Size:** 717 bp

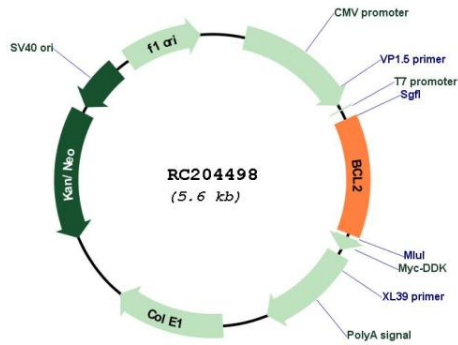
**OTI Disclaimer:** Due to the inherent nature of this plasmid, standard methods to replicate additional amounts of DNA in E. coli are highly likely to result in mutations and/or rearrangements. Therefore, OriGene does not guarantee the capability to replicate this plasmid DNA. Additional amounts of DNA can be purchased from OriGene with batch-specific, full-sequence verification at a reduced cost. Please contact our customer care team at [custsupport@origene.com](mailto:custsupport@origene.com) or by calling 301.340.3188 option 3 for pricing and delivery.

The molecular sequence of this clone aligns with the gene accession number as a point of reference only. However, individual transcript sequences of the same gene can differ through naturally occurring variations (e.g. polymorphisms), each with its own valid existence. This clone is substantially in agreement with the reference, but a complete review of all prevailing variants is recommended prior to use. [More info](#)

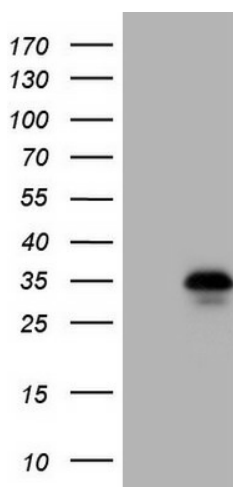
**OTI Annotation:** This clone was engineered to express the complete ORF with an expression tag. Expression varies depending on the nature of the gene.

<b>Components:</b>	The ORF clone is ion-exchange column purified and shipped in a 2D barcoded Matrix tube containing 10ug of transfection-ready, dried plasmid DNA (reconstitute with 100 ul of water).
<b>Reconstitution Method:</b>	<ol style="list-style-type: none"><li>1. Centrifuge at 5,000xg for 5min.</li><li>2. Carefully open the tube and add 100ul of sterile water to dissolve the DNA.</li><li>3. Close the tube and incubate for 10 minutes at room temperature.</li><li>4. Briefly vortex the tube and then do a quick spin (less than 5000xg) to concentrate the liquid at the bottom.</li><li>5. Store the suspended plasmid at -20°C. The DNA is stable for at least one year from date of shipping when stored at -20°C.</li></ol>
<b>RefSeq:</b>	<a href="#">NM_000633.3</a>
<b>RefSeq Size:</b>	6492 bp
<b>RefSeq ORF:</b>	720 bp
<b>Locus ID:</b>	596
<b>UniProt ID:</b>	<a href="#">P10415</a>
<b>Cytogenetics:</b>	18q21.33
<b>Protein Families:</b>	Druggable Genome, ES Cell Differentiation/IPS, Stem cell - Pluripotency, Transmembrane
<b>Protein Pathways:</b>	Amyotrophic lateral sclerosis (ALS), Apoptosis, Colorectal cancer, Focal adhesion, Neurotrophin signaling pathway, Pathways in cancer, Prostate cancer, Small cell lung cancer
<b>MW:</b>	26.1 kDa
<b>Gene Summary:</b>	This gene encodes an integral outer mitochondrial membrane protein that blocks the apoptotic death of some cells such as lymphocytes. Constitutive expression of BCL2, such as in the case of translocation of BCL2 to Ig heavy chain locus, is thought to be the cause of follicular lymphoma. Alternative splicing results in multiple transcript variants. [provided by RefSeq, Feb 2016]

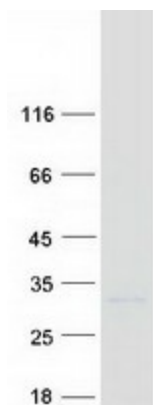
Product images:



Circular map for RC204498



HEK293T cells were transfected with the pCMV6-ENTRY control (Cat# [PS100001], Left lane) or pCMV6-ENTRY BCL2 (Cat# RC204498, Right lane) cDNA for 48 hrs and lysed. Equivalent amounts of cell lysates (5 ug per lane) were separated by SDS-PAGE and immunoblotted with anti-BCL2 (Cat# [TA806591]). Positive lysates [LY424602] (100ug) and [LC424602] (20ug) can be purchased separately from OriGene.



Coomassie blue staining of purified BCL2 protein (Cat# [TP304498]). The protein was produced from HEK293T cells transfected with BCL2 cDNA clone (Cat# RC204498) using MegaTran 2.0 (Cat# [TT210002]).