

## Product datasheet for RC204433

### UBE2Q2 (NM\_173469) Human Tagged ORF Clone

#### Product data:

Product Type:	Expression Plasmids
Product Name:	UBE2Q2 (NM_173469) Human Tagged ORF Clone
Tag:	Myc-DDK
Symbol:	UBE2Q2
Mammalian Cell Selection:	Neomycin
Vector:	pCMV6-Entry (PS100001)
E. coli Selection:	Kanamycin (25 ug/mL)
ORF Nucleotide Sequence:	>RC204433 representing NM_173469 Red=Cloning site Blue=ORF Green=Tags(s)

TTTTGTAATACGACTCACTATAGGGCGGCCGGGAATTCGTCGACTGGATCCGGTACCGAGGAGATCTGCCGCC**CGATCGCC**

ATGTCCGTGTCAGGGCTCAAGGCCGAGCTGAAGTTCCTGGCGTCCATCTTCGACAAGAACCACGAGCGAT  
TCCGCATCGTCAGTTGGAAGCTGGACGAGCTGCACTGCCAGTTCCTGGTGCCGCAGCAGGGCAGCCCGCA  
CTCGTGCCGCCGCCACTCAGCTCCACTGCAACATCACGGAATCCTATCCATCTTTCACCGATATGG  
TTTGTGGATTCTGAAGACCCAAATCTGACATCAGTCTGGAACGTCTAGAAGATACTAAGAACAACAATT  
TGTTTCGTCAGCAATTGAAGTGGTTGATATGTGAACCTGTCAGTTTATATAACCTTCCTAAGCACCTGGA  
TGTTGAGATGCTAGATCAACCACTACCCACGGGTCAGAATGGGACAACAGAAGAAGTACTTCAGAAGAA  
GAGGAAGAAGAAGAAGAGATGGCTGAAGATATAGAAGACTTAGATCACTATGAGATGAAGGAAGAAGAGC  
CTATTAGTGGGAAAAAGTCAGAGGATGAAGGAATTGAAAAAGAAAATTTGGCAATATTAGAGAAAATTAG  
GAAGACTCAAAGGCAAGACCATTTAAATGGTGCAGTGTCTGGGTCAGTCAAGCTTCAGATAGACTTATG  
AAAGAGCTCAGGGACATATACAGATCACAGAGTTATAAAACAGGGATTTATTCAGTGAAGCTCATAAATG  
ACAGTTTATATGACTGGCATGTTAAACTGCAGAAGTTGACCCTGATAGTCTTTGCACAGTGATCTTCA  
GATCTTAAAGAAAAAGAAGGCATAGAATATATTTGCTTAACTTCTCTTTAAGGATAACTTTCCATTT  
GATCCTCCATTTGTTGAGTGGTGTACCTGTTCTCTCAGGAGGTATGTATTGGGTGGAGGAGCATTAT  
GTATGGAACCTTCTCACAACAGGGCTGGAGCAGTGCCTACTCAATAGAATCGGTATCATGCAAAATAAA  
TGCCACCTTAGTCAAAGGCAAAGCCAGAGTGCAGTTTGGAGCAAATAAGAATCAATATAATCTAGCAAGA  
GCCCAACAATCCTATAATTCCATTGTACAGATACATGAGAAAAATGGCTGGTACACCCCTCAAAGGAAG  
ATGGC

**ACGCGT**ACGCGGCCGCTCGAGCAGAACTCATCTCAGAAGAGGATCTGGCAGCAATGATATCCTGGATT  
ACAAGGATGACGACGATAAGGTTTAA



[View online »](#)

**Protein Sequence:** >RC204433 representing NM\_173469  
Red=Cloning site Green=Tags(s)

```
MSVSGLKAELKFLASIFDKNHERFRIVSWKLDLHCQFLVPQQGSPHSLPPPLTLHCNITESYPSSSPIW
FVDSEDPNLTSVLERLEDTKNNLLRQQLKWLICELCSLYNLPKHLDVEMLDQPLPTGQNGTTEEVTSSE
EEEEEMAEDIEDLDHYEMKEEPIISGKKSEDEGIEKENLAILEKIRKTQRQDHLNGAVSGSVQASDRML
KELRDIYRSQSYKTGIYSVELINDSLYDWHVKLQKVDPSPLHSDLQILKEKEGIEYILLNFSFKDNFPF
DPPFVRRVLPVLSGGYVLGGALCMELLTKQGWSSAYSIESVIMQINATLVK GKARVQFGANKNQYNLAR
AQQSYNSIVQIHEKNGWYTPPKEDG
```

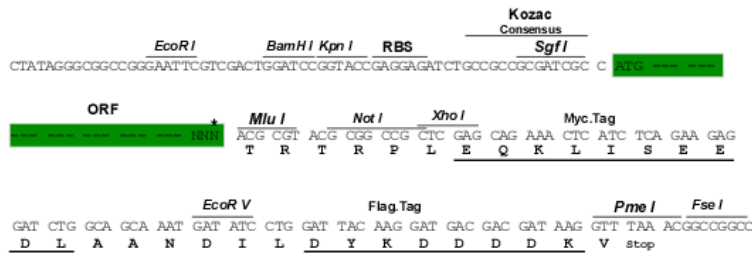
TRTRPLEQKLISEEDLAANDILDYKDDDDKV

**Chromatograms:** [https://cdn.origene.com/chromatograms/mg2876\\_b10.zip](https://cdn.origene.com/chromatograms/mg2876_b10.zip)

**Restriction Sites:** SgfI-MluI

**Cloning Scheme:**

Cloning sites used for ORF Shuttling:



\* The last codon before the Stop codon of the ORF

**ACCN:** NM\_173469

**ORF Size:** 1125 bp

**OTI Disclaimer:** The molecular sequence of this clone aligns with the gene accession number as a point of reference only. However, individual transcript sequences of the same gene can differ through naturally occurring variations (e.g. polymorphisms), each with its own valid existence. This clone is substantially in agreement with the reference, but a complete review of all prevailing variants is recommended prior to use. [More info](#)

**OTI Annotation:** This clone was engineered to express the complete ORF with an expression tag. Expression varies depending on the nature of the gene.

**Components:** The ORF clone is ion-exchange column purified and shipped in a 2D barcoded Matrix tube containing 10ug of transfection-ready, dried plasmid DNA (reconstitute with 100 ul of water).

**Reconstitution Method:**

1. Centrifuge at 5,000xg for 5min.
2. Carefully open the tube and add 100ul of sterile water to dissolve the DNA.
3. Close the tube and incubate for 10 minutes at room temperature.
4. Briefly vortex the tube and then do a quick spin (less than 5000xg) to concentrate the liquid at the bottom.
5. Store the suspended plasmid at -20°C. The DNA is stable for at least one year from date of shipping when stored at -20°C.

**RefSeq:** [NM\\_173469.4](#)

**RefSeq Size:** 2939 bp

**RefSeq ORF:** 1128 bp

**Locus ID:** 92912

**UniProt ID:** [Q8WVN8](#)

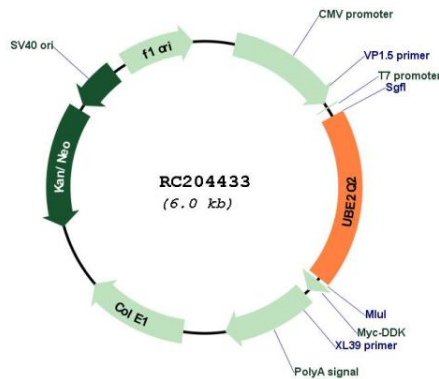
**Cytogenetics:** 15q24.2

**Protein Pathways:** Ubiquitin mediated proteolysis

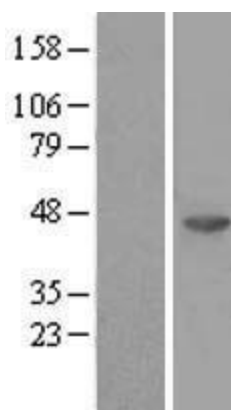
**MW:** 42.6 kDa

**Gene Summary:** Accepts ubiquitin from the E1 complex and catalyzes its covalent attachment to other proteins. In vitro catalyzes 'Lys-48'-linked polyubiquitination.[UniProtKB/Swiss-Prot Function]

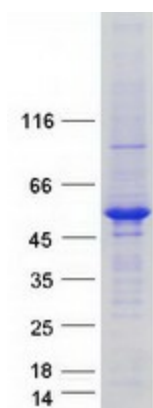
### Product images:



Circular map for RC204433



Western blot validation of overexpression lysate (Cat# [LY406622]) using anti-DDK antibody (Cat# [TA50011-100]). Left: Cell lysates from untransfected HEK293T cells; Right: Cell lysates from HEK293T cells transfected with RC204433 using transfection reagent MegaTran 2.0 (Cat# [TT210002]).



Coomassie blue staining of purified UBE2Q2 protein (Cat# [TP304433]). The protein was produced from HEK293T cells transfected with UBE2Q2 cDNA clone (Cat# RC204433) using MegaTran 2.0 (Cat# [TT210002]).