

## Product datasheet for **RC204335**

### CD23 (FCER2) (NM\_002002) Human Tagged ORF Clone

#### Product data:

Product Type:	Expression Plasmids
Product Name:	CD23 (FCER2) (NM_002002) Human Tagged ORF Clone
Tag:	Myc-DDK
Symbol:	CD23
Synonyms:	BLAST-2; CD23; CD23A; CLEC4J; FCE2; IGBF
Mammalian Cell Selection:	Neomycin
Vector:	pCMV6-Entry (PS100001)
E. coli Selection:	Kanamycin (25 ug/mL)
ORF Nucleotide Sequence:	>RC204335 ORF sequence Red=Cloning site Blue=ORF Green=Tags(s)

TTTTGTAATACGACTCACTATAGGGCGGCCGGAATTCGTCGACTGGATCCGGTACCGAGGAGATCTGCC  
GCC**CGATCGCC**

ATGGAGGAAGGTCAATATTCAGAGATCGAGGAGCTTCCAGGAGGCGGTGTTGCAGGCGTGGGACTCAGA  
TCGTGCTGCTGGGGCTGGTGACCGCGCTCTGTGGGCTGGGCTGCTGACTCTGCTTCTCCTGTGGCACTG  
GGACACCACAGAGTCTAAAACAGCTGGAAGAGAGGGCTGCCCGAACGCTCTCAAGTTTCCAAGAAC  
TTGGAAAGCCACCACGGTGACCAGATGGCGCAGAAATCCAGTCCACGCAGATTTACAGGAACTGGAGG  
AACTTCGAGCTGAACAGCAGAGATTGAAATCTCAGGACTTGGAGCTGTCTGGAACCTGAACGGGCTTCA  
AGCAGATCTGAGCAGCTTCAAGTCCCAGGAATTGAACGAGAGGAACGAAGCTTCAAGTTTGTGGAAAGA  
CTCCGGGAGGAGGTGACAAAGCTAAGGATGGAGTTGCAGGTGTCCAGCGCTTTGTGTGCAACACGTGCC  
CTGAAAAGTGGATCAATTTCAAACGGAAGTGCTACTACTTCGGCAAGGGCACCAAGCAGTGGGTCCACGC  
CCGGTATGCCTGTGACGACATGGAAGGGCAGCTGGTCAGCATCCACAGCCCGGAGGAGCAGGACTTCCTG  
ACCAAGCATGCCAGCCACACCGGCTCCTGGATTGGCTTCGGAATTGGACCTGAAGGGGGAGTTTATCT  
GGGTGGATGGGAGCCACGTGGACTACAGCAACTGGGCTCCAGGGGAGCCACCAGCCGGAGCCAGGGCGA  
GGACTGCGTGATGATGCGGGGCTCCGGTCGCTGGAACGACGCCTTCTGCCACCGTAAGCTGGGCGCCTGG  
GTGTGCCACCGGCTGGCCACATGCACGCCGCCAGCCAGCGAAGGTTCCCGGGAGTCCATGGGACCTGATT  
CAAGACCAGACCCTGACGCGCCCTGCCACCCCTCTGCCCTCTCCACTCT

**ACGCGT**ACGCGGCCGCTCGAGCAGAAACTCATCTCAGAAGAGGATCTGGCAGCAAATGATATCCTGGATT  
ACAAGGATGACGACGATAAGGTTTAA



[View online »](#)

**Protein Sequence:** >RC204335 protein sequence  
Red=Cloning site Green=Tags(s)

MEEGQYSEIEELPRRRCRRGTQIVLLGLVTAALWAGLLTLLLLWHWDTTQSLKQLEERAARNVSQVSKN  
 LESHHDQMAQKSQSTQISQELEELRAEQRLKSQDLELSWNLNGLQADLSSFKSQELNERNEASDLLER  
 LREEVTKLRMELQVSSGFVCNTCPEKWINFQRKCYFYGKGTKQVWHARYACDDMEGQLVSIHSPEEQDFL  
 TKHASHTGSWIGLRNLDLKGFIWVDGSHVDYSNWAPGEPTSRSQGEDCVMMRGSGRWDAFCDRKLGAW  
 VCDRLATCTPPASEGSAESMGPDSPDPDGRLLTPSAPLHS

TRTRPLEQKLISEEDLAANDILDYKDDDDKV

**Chromatograms:** [https://cdn.origene.com/chromatograms/mk6060\\_g08.zip](https://cdn.origene.com/chromatograms/mk6060_g08.zip)

**Restriction Sites:** SgfI-MluI

**Cloning Scheme:**



**ACCN:** NM\_002002

**ORF Size:** 963 bp

**OTI Disclaimer:** The molecular sequence of this clone aligns with the gene accession number as a point of reference only. However, individual transcript sequences of the same gene can differ through naturally occurring variations (e.g. polymorphisms), each with its own valid existence. This clone is substantially in agreement with the reference, but a complete review of all prevailing variants is recommended prior to use. [More info](#)

**OTI Annotation:** This clone was engineered to express the complete ORF with an expression tag. Expression varies depending on the nature of the gene.

**Components:** The ORF clone is ion-exchange column purified and shipped in a 2D barcoded Matrix tube containing 10ug of transfection-ready, dried plasmid DNA (reconstitute with 100 ul of water).

**Reconstitution Method:**

1. Centrifuge at 5,000xg for 5min.
2. Carefully open the tube and add 100ul of sterile water to dissolve the DNA.
3. Close the tube and incubate for 10 minutes at room temperature.
4. Briefly vortex the tube and then do a quick spin (less than 5000xg) to concentrate the liquid at the bottom.
5. Store the suspended plasmid at -20°C. The DNA is stable for at least one year from date of shipping when stored at -20°C.

**RefSeq:** [NM\\_002002.4](#)

**RefSeq Size:** 1620 bp

**RefSeq ORF:** 966 bp

**Locus ID:** 2208

**UniProt ID:** [P06734](#)

**Cytogenetics:** 19p13.2

**Domains:** CLECT

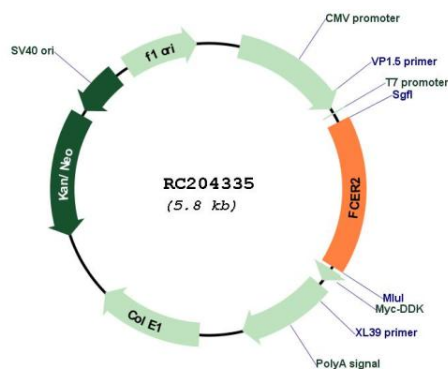
**Protein Families:** Secreted Protein, Transmembrane

**Protein Pathways:** Hematopoietic cell lineage

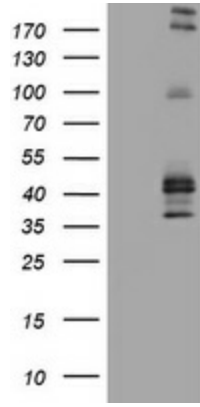
**MW:** 36.5 kDa

**Gene Summary:** The protein encoded by this gene is a B-cell specific antigen, and a low-affinity receptor for IgE. It has essential roles in B cell growth and differentiation, and the regulation of IgE production. This protein also exists as a soluble secreted form, then functioning as a potent mitogenic growth factor. Alternatively spliced transcript variants encoding different isoforms have been described for this gene.[provided by RefSeq, Jul 2011]

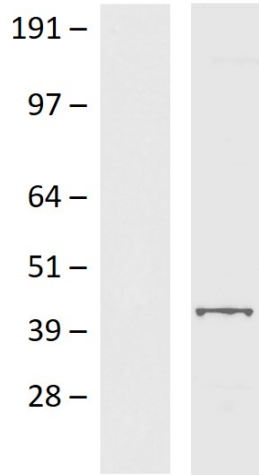
## Product images:



Circular map for RC204335



HEK293T cells were transfected with the pCMV6-ENTRY control (Cat# [PS100001], Left lane) or pCMV6-ENTRY FCER2 (Cat# RC204335, Right lane) cDNA for 48 hrs and lysed. Equivalent amounts of cell lysates (5 ug per lane) were separated by SDS-PAGE and immunoblotted with anti-FCER2 (Cat# [TA801531])(1:2000).



Western blot validation of overexpression lysate (Cat# [LY419592]) using anti-DDK antibody (Cat# [TA592569]). Left: Cell lysates from untransfected HEK293T cells; Right: Cell lysates from HEK293T cells transfected with RC204335 using transfection reagent PEI.