

## Product datasheet for **RC203986**

### DP1 (TFDP1) (NM\_007111) Human Tagged ORF Clone

#### Product data:

Product Type:	Expression Plasmids
Product Name:	DP1 (TFDP1) (NM_007111) Human Tagged ORF Clone
Tag:	Myc-DDK
Symbol:	DP1
Synonyms:	DILC; Dp-1; DP1; DRTF1
Mammalian Cell Selection:	Neomycin
Vector:	pCMV6-Entry (PS100001)
E. coli Selection:	Kanamycin (25 ug/mL)
ORF Nucleotide Sequence:	>RC203986 ORF sequence Red=Cloning site Blue=ORF Green=Tags(s)

TTTTGTAATACGACTCACTATAGGGCGGCCGGAATTCGTCGACTGGATCCGGTACCGAGGAGATCTGCC  
GCC**CGATCGCC**

ATGGCAAAAGATGCCGGTCTAATTGAAGCCAACGGAGAACTCAAGGTCTTCATAGACCAGAACCTTAGTC  
CCGGGAAAGGCGTGGTGTCCCTCGTGGCCGTTACCCCTCCACCGTCAACCCGCTCGGGAAGCAGCTCTT  
GCCAAAAACCTTTGGACAGTCCAATGTCAACATTGCCAGCAAGTGGTAATTGGTACGCCTCAGAGACCG  
GCAGCGTCAAACACCCTGGTGGTAGGAAGCCACACACCCCCAGCACTACTTTGCCTCTCAGAACCAGC  
CTTCCGACTCCTCACCTGGTCTGCCGGGAAGCGCAACAGGAAAGGAGAGAAGAATGGCAAGGGCCTACG  
GCATTTCTCCATGAAGGTCTGCGAGAAGGTGCGAGGAAAGGGACCATTCTACAAACGAGTGGCAGAG  
GAGCTGGTTGCGGAGTTCAGTGCTGCCGACAACCATCTTACCAAACGAGTCACTTATGACCAGAAAA  
ACATAAGACGGCGCTACGATGCCTTAAACGTGCTAATGGCCATGAACATCATCTCCAAGGAGAAGAA  
GGAGATCAAGTGGATTGGTCTGCCACCAACTCGGCTCAGGAATGTGAGAACTTAGAGGTGGAAAGACAG  
AGGAGACTTGAAGAATAAAACAGAAACAGTCTCAACTTCAAGAACTTATTCTACAGCAAATTCCTTCA  
AGAACCTGGTGCAGAGAAACCGGCATGCCGAGCAGCAGCCAGCCGCGCCACCCCACTCAGTCAT  
CCACCTGCCCTTCATCATCGTCAACACCAGCAAGAAGACGGTTCATCGACTGCAGCATCTCCAATGACAAA  
TTTGAGTATCTGTTAATTTTGACAACACATTTGAAATCCACGATGACATAGAAGTGTGAAGCGGATGG  
GCATGGCTTGCAGGCTGGAGTCCGGGAGCTGCTCTGCCGAAGACCTTAAATGGCCAGAAGTCTGGTCCC  
CAAGGCTCTGGAGCCATACGTGACAGAAATGGCTCAGGGAAGTGTGGAGGCGTGTTCATCACGACGGCA  
GGTTCCACGTCTAACGGCACAAGGTTCTCTGCCAGTGACCTGACCAACGGTGCAGATGGGATGCTGGCCA  
CAAGCTCCAATGGGTCTCAGTACAGCGCTCCAGGTTGGAGACTCCGGTGTCTACGTCCGGGAGGACGA  
CGAGGAGGACGATGACTTCAACGAGAATGACGAGGACGAC

**ACGGT**ACGGCGCCGCTCGAGCAGAACTCATCTCAGAAGAGGATCTGGCAGCAAATGATATCTGGATT  
ACAAGGATGACGACGATAAGGTTTAA



[View online »](#)

**Protein Sequence:** >RC203986 protein sequence  
Red=Cloning site Green=Tags(s)

MAKDAGLIEANGELKVFIDQNLSPGKGVVSLVAVHPSTVNPLGKQLPKTFGQSNVNIAQQVVIQTPQRP  
 AASNTLVVGSPTHPTSTHFASQNQPSDSSPWSAGKRNRKGEKNGKGLRHF SMKVCEKVQRKGTTSYNEVAD  
 ELVAEFSAADNHILPNESAYDQKNIRRRVYDALNVLAMMNIISKEKKEIKWIGLPTNSAQEQNLEVERQ  
 RRLERIKQKQSQLQELILQQIAFKNLVQRNRHAEQQASRPPPPNSVIHLPFIIIVNTSKKTVIDCSI SNDK  
 FEYLFNFDFNTFEIHDDIEVLKRMGMACGLESGSCSAEDLKMARSLVPKALEPYVTEMAQGTVGGVITTA  
 GSTSNGTRFSASDLTNGADGMLATSSNGSQYSGSRVETPVSYVGEDDEEDDDFNENDEDD

TRTRPLEQKLISEEDLAANDILDYKDDDDKV

**Chromatograms:** [https://cdn.origene.com/chromatograms/mk6058\\_c05.zip](https://cdn.origene.com/chromatograms/mk6058_c05.zip)

**Restriction Sites:** SgfI-MluI

**Cloning Scheme:**



\* The last codon before the Stop codon of the ORF

**ACCN:** NM\_007111

**ORF Size:** 1230 bp

**OTI Disclaimer:** The molecular sequence of this clone aligns with the gene accession number as a point of reference only. However, individual transcript sequences of the same gene can differ through naturally occurring variations (e.g. polymorphisms), each with its own valid existence. This clone is substantially in agreement with the reference, but a complete review of all prevailing variants is recommended prior to use. [More info](#)

**OTI Annotation:** This clone was engineered to express the complete ORF with an expression tag. Expression varies depending on the nature of the gene.

**Components:** The ORF clone is ion-exchange column purified and shipped in a 2D barcoded Matrix tube containing 10ug of transfection-ready, dried plasmid DNA (reconstitute with 100 ul of water).

**Reconstitution Method:**

1. Centrifuge at 5,000xg for 5min.
2. Carefully open the tube and add 100ul of sterile water to dissolve the DNA.
3. Close the tube and incubate for 10 minutes at room temperature.
4. Briefly vortex the tube and then do a quick spin (less than 5000xg) to concentrate the liquid at the bottom.
5. Store the suspended plasmid at -20°C. The DNA is stable for at least one year from date of shipping when stored at -20°C.

**RefSeq:** [NM\\_007111.5](#)

**RefSeq Size:** 2651 bp

**RefSeq ORF:** 1233 bp

**Locus ID:** 7027

**UniProt ID:** [Q14186](#)

**Cytogenetics:** 13q34

**Domains:** E2F\_TDP

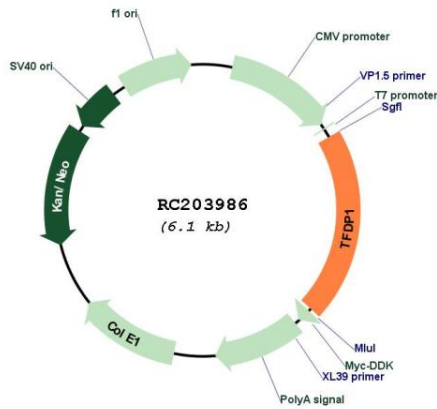
**Protein Families:** Druggable Genome, Transcription Factors

**Protein Pathways:** Cell cycle, TGF-beta signaling pathway

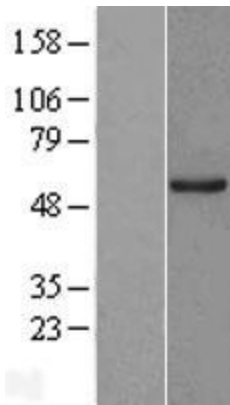
**MW:** 45.1 kDa

**Gene Summary:** This gene encodes a member of a family of transcription factors that heterodimerize with E2F proteins to enhance their DNA-binding activity and promote transcription from E2F target genes. The encoded protein functions as part of this complex to control the transcriptional activity of numerous genes involved in cell cycle progression from G1 to S phase. Alternative splicing results in multiple transcript variants. Pseudogenes of this gene are found on chromosomes 1, 15, and X.[provided by RefSeq, Jan 2009]

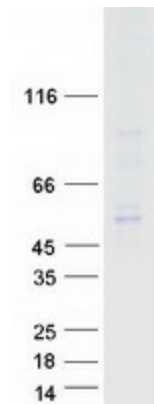
Product images:



Circular map for RC203986



Western blot validation of overexpression lysate (Cat# [LY416191]) using anti-DDK antibody (Cat# [TA50011-100]). Left: Cell lysates from untransfected HEK293T cells; Right: Cell lysates from HEK293T cells transfected with RC203986 using transfection reagent MegaTran 2.0 (Cat# [TT210002]).



Coomassie blue staining of purified TFDP1 protein (Cat# [TP303986]). The protein was produced from HEK293T cells transfected with TFDP1 cDNA clone (Cat# RC203986) using MegaTran 2.0 (Cat# [TT210002]).