

## Product datasheet for **RC203972**

### **TMPRSS4 (NM\_019894) Human Tagged ORF Clone**

#### **Product data:**

Product Type:	Expression Plasmids
Product Name:	TMPRSS4 (NM_019894) Human Tagged ORF Clone
Tag:	Myc-DDK
Symbol:	TMPRSS4
Synonyms:	CAP2; CAPH2; MT-SP2; TMPRSS3
Mammalian Cell Selection:	Neomycin
Vector:	pCMV6-Entry (PS100001)
E. coli Selection:	Kanamycin (25 ug/mL)



[View online »](#)

**ORF Nucleotide Sequence:**

>RC203972 ORF sequence  
 Red=Cloning site Blue=ORF Green=Tags(s)

TTTTGTAATACGACTCACTATAGGGCGGCCGGAATTCGTCGACTGGATCCGGTACCGAGGAGATCTGCC  
 GCC**CGGATCGCC**

ATGTTACAGGATCCTGACAGTGATCAACCTCTGAACGCCTCGATGTCAAACCCCTGCGCAAACCCCGTA  
 TCCCATGGAGACCTTCAGAAAGGTGGGATCCCATCATCATAGCACTACTGAGCCTGGCGAGTATCAT  
 CATTGTGGTTGTCTCATCAAGGTGATTCTGGATAAATACTACTTCTCTGCGGGCAGCCTCTCCACTTC  
 ATCCCAGGAAGCAGCTGTGTGACGGAGAGCTGGACTGTCCTTGGGGGAGGACGAGGAGCACTGTGTCA  
 AGAGCTTCCCGAAGGGCCTGCAGTGGCAGTCCGCCTCTCAAGGACCGATCCACACTGCAGGTGCTGGA  
 CTCGGCCACAGGAACTGGTTCTCTGCCTGTTTCGACAACCTCACAGAAGCTCTCGCTGAGACAGCCTGT  
 AGGCAGATGGGCTACAGCAGCAAACCCACTTTCAGAGCTGTGGAGATTGGCCAGACCAGGATCTGGATG  
 TTGTTGAAATCACAGAAAACAGCCAGGAGCTTCGCATGCGGAACCAAGTGGGCCCTGTCTCTCAGGCTC  
 CCTGGTCTCCCTGCACTGTCTTGCCTGTGGGAAGAGCCTGAAGACCCCCGTGTGGTGGGTGGGAGGAG  
 GCCTCTGTGGATTCTTGGCCTTGGCAGGTGAGCATCCAGTACGACAAACAGCACGCTGTGGAGGGAGCA  
 TCCTGGACCCCACTGGGTCTCACGGCAGCCACTGCTTCAGGAAACATACCGATGTGTCAACTGGAA  
 GGTGCGGGCAGGCTCAGACAAACTGGGCAGCTTCCCATCCCTGGCTGTGGCCAAGATCATCATATTGAA  
 TTCAACCCCATGTACCCAAAGACAATGACATCGCCCTCATGAAGCTGCAGTTCCCACTCACTTTCTCAG  
 GCACAGTCAGGCCATCTGTCTGCCCTTCTTTGATGAGGAGCTCACTCCAGCCACCCCACTCTGGATCAT  
 TGGATGGGGCTTACGAAGCAGAATGGAGGGAAGATGTCTGACATACTGCTGCAGCGTCAGTCCAGGTC  
 ATTGACAGCACACGGTGAATGCAGACGATGCGTACCAGGGGAAGTACCAGAGAAGATGATGTGTGCAG  
 GCATCCCGGAAGGGGTGTGGACACCTGCCAGGTGACAGTGGTGGGCCCTGATGTACCAATCTGACCA  
 GTGGCATGTGGTGGGCATCGTTAGCTGGGCTATGGCTGCGGGGGCCCGAGCACCCAGGAGTATACACC  
 AAGGTCTCAGCCTATCTCAACTGGATCTACAATGTCTGGAAGGCTGAGCTG

**ACGCGT**ACGCGGCCGCTCGAGCAGAAACTCATCTCAGAAGAGGATCTGGCAGCAAATGATATCCTGGATT  
 ACAAGGATGACGACGATAAGGTTTAA

**Protein Sequence:**

>RC203972 protein sequence  
 Red=Cloning site Green=Tags(s)

MLQDPDSQPLNSLDVKPLRKPRIPMETFRKVGIPIIIIALLSLASIIIVVLIKVILDKYYFLCGQPLHF  
 IPRKQLCDGELDCPLGEDEEHCVKSFPEGPAVAVRLSKDRSTLQVLD SATGNWFSACFDNFTEAL AETAC  
 RQMGYSSKPTFRAVEIGPDQLDVVEITENSQELRMRNSSGPCLSGSLVSLHCLACGKSLKTPRVVGEE  
 ASVDSWPWQVSIQYDKQHVCSSILDPHWLTAHCFRKHTDVFNWKVRAGSDKLSFSPSLAVAKIIIE  
 FNPMPYKDNNDIALMKLQFPLTFSGTVRPICLPFFDEELTPATPLWIIIGWFTKQNGGKMSDILLQASVQV  
 IDSTRCNADDAYQGEVTEKMMCAGIPEGGVDTCQGDSSGPLMYQSDQWHVVGIVSWGYCCGPSTPGVYT  
 KVSAYLNWIYNVWKAEL

**TR**TRPLEQKLISEEDLAANDILDYKDDDDKV

**Chromatograms:**

[https://cdn.origene.com/chromatograms/mk6422\\_f04.zip](https://cdn.origene.com/chromatograms/mk6422_f04.zip)

**Restriction Sites:**

SgfI-MluI

**Cloning Scheme:**


**ACCN:** NM\_019894

**ORF Size:** 1311 bp

**OTI Disclaimer:** The molecular sequence of this clone aligns with the gene accession number as a point of reference only. However, individual transcript sequences of the same gene can differ through naturally occurring variations (e.g. polymorphisms), each with its own valid existence. This clone is substantially in agreement with the reference, but a complete review of all prevailing variants is recommended prior to use. [More info](#)

**OTI Annotation:** This clone was engineered to express the complete ORF with an expression tag. Expression varies depending on the nature of the gene.

**Components:** The ORF clone is ion-exchange column purified and shipped in a 2D barcoded Matrix tube containing 10ug of transfection-ready, dried plasmid DNA (reconstitute with 100 ul of water).

**Reconstitution Method:**

1. Centrifuge at 5,000xg for 5min.
2. Carefully open the tube and add 100ul of sterile water to dissolve the DNA.
3. Close the tube and incubate for 10 minutes at room temperature.
4. Briefly vortex the tube and then do a quick spin (less than 5000xg) to concentrate the liquid at the bottom.
5. Store the suspended plasmid at -20°C. The DNA is stable for at least one year from date of shipping when stored at -20°C.

**RefSeq:** [NM\\_019894.2](#), [NP\\_063947.1](#)

**RefSeq Size:** 3549 bp

**RefSeq ORF:** 1314 bp

**Locus ID:** 56649

**UniProt ID:** [Q9NRS4](#)

**Cytogenetics:** 11q23.3

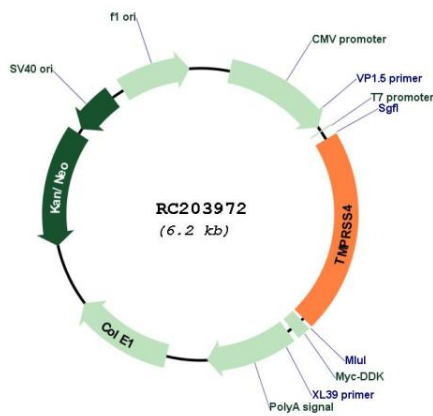
**Domains:** SR, Tryp\_SPc

**Protein Families:** Druggable Genome, Protease, Transmembrane

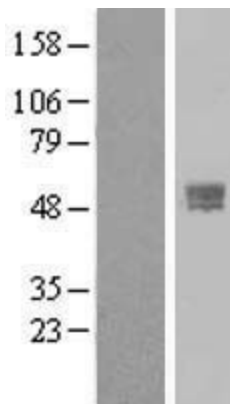
**MW:** 48.2 kDa

**Gene Summary:** This gene encodes a member of the serine protease family. Serine proteases are known to be involved in a variety of biological processes, whose malfunction often leads to human diseases and disorders. This gene was identified as a gene overexpressed in pancreatic carcinoma. The encoded protein is membrane bound with a N-terminal anchor sequence and a glycosylated extracellular region containing the serine protease domain. Multiple transcript variants encoding different isoforms have been found for this gene. [provided by RefSeq, Jul 2008]

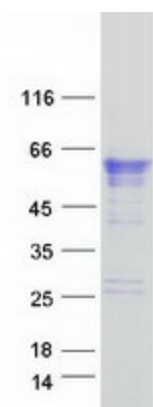
**Product images:**



Circular map for RC203972



Western blot validation of overexpression lysate (Cat# [LY412678]) using anti-DDK antibody (Cat# [TA50011-100]). Left: Cell lysates from untransfected HEK293T cells; Right: Cell lysates from HEK293T cells transfected with RC203972 using transfection reagent MegaTran 2.0 (Cat# [TT210002]).



Coomassie blue staining of purified TMPRSS4 protein (Cat# [TP303972]). The protein was produced from HEK293T cells transfected with TMPRSS4 cDNA clone (Cat# RC203972) using MegaTran 2.0 (Cat# [TT210002]).