

Product datasheet for RC203904

ABHD11 (NM_148912) Human Tagged ORF Clone

Product data:

Product Type:	Expression Plasmids
Product Name:	ABHD11 (NM_148912) Human Tagged ORF Clone
Tag:	Myc-DDK
Symbol:	ABHD11
Synonyms:	PP1226; WBSCR21
Mammalian Cell Selection:	Neomycin
Vector:	pCMV6-Entry (PS100001)
E. coli Selection:	Kanamycin (25 ug/mL)
ORF Nucleotide Sequence:	>RC203904 ORF sequence Red=Cloning site Blue=ORF Green=Tags(s)

TTTTGTAATACGACTCACTATAGGGCGGCCGGAATTCGTCGACTGGATCCGGTACCGAGGAGATCTGCC
GCC**CGCATCGCC**

ATGCGAGCCGGCCAACAGCTTGCAAGCATGCTCCGCTGGACCCGAGCCTGGAGGCTCCCGCGTGAGGGAC
TCGGCCCCACGGCCCTAGCTTCGCGAGGGTGCCTGTCGCACCCAGCAGCAGCAGCGGGCCGAGGGGG
CGCCGAGCCGAGGCCGCTTCCGCTTCTACAGGCTTCTGGACGGGGAGGCAGCCCTCCCGCCGTCGTC
TTTTTGACGGGCTCTTCGGCAGCAAACTAATTCAACTCCATCGCCAAGATCTTGGCCAGCAGACAG
GCCGTAGGGTGTGACGGTGGATGCTCGTAACACGGTGACAGCCCCACAGCCAGACATGAGCTACGA
GATCATGAGCCAGGACCTGCAGGACCTTCTGCCCCAGCTGGGCCTGGTGCCTGCGTCGTTGGCCAC
AGCATGGGAGGAAAGACAGCCATGCTGCTGGCACTACAGAGGCCAGAGCTGGTGGAACTCTCATTGCTG
TAGATATCAGCCAGTGGAAAGCACAGGTGCTCCCACTTTGCAACCTATGTGGCAGCCATGAGGGCCAT
CAACATCGCAGATGAGCTGCCCGCTCCCGTGCCCGAAAAGTGGCGGATGAACAGCTCAGTTCTGTCATC
CAGGACATGGCCGTGCGGCAGCACCTGCTACTAACCTGGTAGAGGTAGACGGGCGCTTCGTGTGGAGGG
TGAACCTGGATGCCCTGACCCAGCACCTAGACAAGATCTTGGCTTTCCACAGAGGCAGGAGTCTACCT
CGGGCCAAACACTTTTCTCCTTGGTGGAACTCCAGTTCTGTCATCCCAGCCACCACCTGAGATTATG
CGGCTCTCCCTCGGGCCAGATGCAGACGGTGCCGAACGCTGGCCAATGGATCCACGCTGACCGCCAC
AGGACTTCATAGCTGCCATCCGAGGCTTCTGGTC

ACGCGTACGCGGCCGCTCGAGCAGAAACTCATCTCAGAAGAGGATCTGGCAGCAAATGATATCCTGGATT
ACAAGGATGACGACGATAAGGTTTAA



[View online »](#)

Protein Sequence: >RC203904 protein sequence
Red=Cloning site Green=Tags(s)

MRAGQQLASMLRWTRAWRLPREGLGPHGPSFARVPVAPSSSSGGRGGAEPRLPLSYRLLDGEAALPAVV
 FLHGLFGSKTNFNSIAKILAQQTGRRVLTVDARNHGDSPHSPDMSYEIMSQDLQDLLPQLGLVPCVVVGH
 SMGGKTAMLLALQRPELVERLIAVDISPVESTGVSHFATYVAAMRAINIADELPRSRARKLADEQLSSVI
 QDMAVRQHLLTNLVEVDGRFVWRVNLDALTQHLDKILAFPQRQESYLGPTLFLGGNSQFVHPSHHPEIM
 RLFPRMQMOTVPNAGHWIHADRPQDFIAAIRGFLV

TRTRPLEQKLISEEDLAANDILDYKDDDDKV

Chromatograms: https://cdn.origene.com/chromatograms/mk6302_e09.zip

Restriction Sites: SgfI-MluI

Cloning Scheme:



ACCN: NM_148912

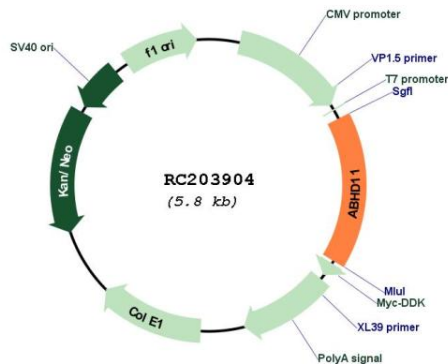
ORF Size: 945 bp

OTI Disclaimer: Due to the inherent nature of this plasmid, standard methods to replicate additional amounts of DNA in E. coli are highly likely to result in mutations and/or rearrangements. Therefore, OriGene does not guarantee the capability to replicate this plasmid DNA. Additional amounts of DNA can be purchased from OriGene with batch-specific, full-sequence verification at a reduced cost. Please contact our customer care team at custsupport@origene.com or by calling 301.340.3188 option 3 for pricing and delivery.

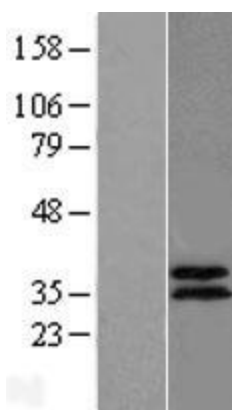
The molecular sequence of this clone aligns with the gene accession number as a point of reference only. However, individual transcript sequences of the same gene can differ through naturally occurring variations (e.g. polymorphisms), each with its own valid existence. This clone is substantially in agreement with the reference, but a complete review of all prevailing variants is recommended prior to use. [More info](#)

OTI Annotation:	This clone was engineered to express the complete ORF with an expression tag. Expression varies depending on the nature of the gene.
Components:	The ORF clone is ion-exchange column purified and shipped in a 2D barcoded Matrix tube containing 10ug of transfection-ready, dried plasmid DNA (reconstitute with 100 ul of water).
Reconstitution Method:	<ol style="list-style-type: none">1. Centrifuge at 5,000xg for 5min.2. Carefully open the tube and add 100ul of sterile water to dissolve the DNA.3. Close the tube and incubate for 10 minutes at room temperature.4. Briefly vortex the tube and then do a quick spin (less than 5000xg) to concentrate the liquid at the bottom.5. Store the suspended plasmid at -20°C. The DNA is stable for at least one year from date of shipping when stored at -20°C.
RefSeq:	NM_148912.3
RefSeq Size:	1467 bp
RefSeq ORF:	921 bp
Locus ID:	83451
UniProt ID:	Q8NFV4
Cytogenetics:	7q11.23
MW:	34.7 kDa
Gene Summary:	This gene encodes a protein containing an alpha/beta hydrolase fold domain. This gene is deleted in Williams syndrome, a multisystem developmental disorder caused by the deletion of contiguous genes at 7q11.23. [provided by RefSeq, Mar 2016]

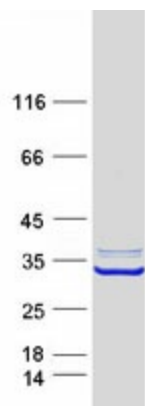
Product images:



Circular map for RC203904



Western blot validation of overexpression lysate (Cat# [LY407728]) using anti-DDK antibody (Cat# [TA50011-100]). Left: Cell lysates from untransfected HEK293T cells; Right: Cell lysates from HEK293T cells transfected with RC203904 using transfection reagent MegaTran 2.0 (Cat# [TT210002]).



Coomassie blue staining of purified ABHD11 protein (Cat# [TP303904]). The protein was produced from HEK293T cells transfected with ABHD11 cDNA clone (Cat# RC203904) using MegaTran 2.0 (Cat# [TT210002]).