

Product datasheet for **RC203886**

c20orf72 (MGME1) (NM_052865) Human Tagged ORF Clone

Product data:

Product Type:	Expression Plasmids
Product Name:	c20orf72 (MGME1) (NM_052865) Human Tagged ORF Clone
Tag:	Myc-DDK
Symbol:	c20orf72
Synonyms:	bA504H3.4; C20orf72; DDK1; MTDPS11
Mammalian Cell Selection:	Neomycin
Vector:	pCMV6-Entry (PS100001)
E. coli Selection:	Kanamycin (25 ug/mL)
ORF Nucleotide Sequence:	>RC203886 ORF sequence Red=Cloning site Blue=ORF Green=Tags(s)

TTTTGTAATACGACTCACTATAGGGCGCCGGGAATTCGTCGACTGGATCCGGTACCGAGGAGATCTGCC
GCC**CGATCGCC**

ATGAAGATGAAGTTATTTTCAGACCATTTGCAGGCAGCTCAGGAGTTCAAAGTTTTCTGTGGAATCAGCTG
CCCTTGTGGCTTTCTCTACTTCTCTTACTCATGTGGCCGAAGAAAAAGTGAACCCATATGAAGAAGT
GGACCAAGAAAAATACTCTAATTTAGTTCAGTCTGTCTTGTCCATCCAGAGGCGTCGCCAGACCCCGGA
TCGGTGGAGGAAGATGCTTTGCTCTGTGGACCCGTGAGCAAGCATAAGCTGCCAAACCAAGGTGAGGACA
GACGAGTGCCACAAAACGGTTTTCTATCTTCAATCCAGAGAGAAGTGATAAACCAAATGCAAGTGATCC
TTCAGTTCCTTTGAAAATCCCTTGCAAAGGAATGTGATACCAAGTGTGACCCGAGTCCCTCAGCAGACC
ATGACAAAACAACAGGTTTTCTTGTGGAGAGGTGAAAACAGCGGATGATTCTGGAAGTGGGAGAAGATG
GCTTTAAAGAATACACTTCAAACGTCTTTTTACAAGGGAAACGGTTCACGAAGCCTTGGAAAGCATACT
TTCACCCAGGAAACCTTAAAAGAGAGAGATGAAAATCTCCTCAAGTCTGGTTACATTGAAAGTGTCCAG
CATATTCTGAAAGATGTCAGTGGAGTGCAGCTCTTCAAAGTGTGTTCAACATGAAACCTTAAACTATA
TAGGTCTGCTGGACTGTGTGGCTGAGTATCAGGGCAAGCTCTGTGTGATTGATTGGAAGACATCAGAGAA
ACCAAAGCCTTTTATTCAAAGTACATTTGACAACCCACTGCAAGTTGTGGCATAACATGGGTGCCATGAAC
CATGATACCAACTACAGCTTTTCAGGTTCAATGTGGCTTAATTGTGGTGGCCTACAAGATGGATCACCTG
CCACCCACATTTTCATGGATGCAGAGCTCTGTTCCAGTACTGGACCAAGTGGCTTCTTCGACTAGAAGA
ATATACGGAAAAGAAAAAGAACCAGAATATTCAGAAACCAGAATATTCAGAA

ACGCGTACGCGGCCGCTCGAGCAGAAACTCATCTCAGAAGAGGATCTGGCAGCAAATGATATCCTGGATT
ACAAGGATGACGACGATAAGGTTTAA



[View online »](#)

Protein Sequence: >RC203886 protein sequence
Red=Cloning site Green=Tags(s)

MKMKLFQITICRQLRSSKFSVESAAALVAFSTSSYSCGRKKKVNYPYEEVDQEKYSNLVQSVLSSRGVAQTPG
 SVEEDALLCGPVSKHKLPNQGEDRRVPQNWFPINFNPERSDKPNASDPVPLKIPLQRNVIPSVTRVLQQT
 MTKQQVFLLERWKQRMILELGEDGFKEYTSNVFLQGRFHEALESILSPQETLKERDENLLKSGYIESVQ
 HILKDVSGVRALESVQHETLNYIGLLDCVAEYQGKLCVIDWKTSEKPKPFIQSTFDNPLQVVAYMGAMN
 HDTNYSFQVQCGLIVVAYKDGSPAHPHFMDAELCSQYWKWLLRLEEYTEKKKNQNIQKPEYSE

TRTRPLEQKLISEEDLAANDILDYKDDDDKV

Chromatograms: https://cdn.origene.com/chromatograms/mk6012_b05.zip

Restriction Sites: SgfI-MluI

Cloning Scheme:



ACCN: NM_052865

ORF Size: 1032 bp

OTI Disclaimer: The molecular sequence of this clone aligns with the gene accession number as a point of reference only. However, individual transcript sequences of the same gene can differ through naturally occurring variations (e.g. polymorphisms), each with its own valid existence. This clone is substantially in agreement with the reference, but a complete review of all prevailing variants is recommended prior to use. [More info](#)

OTI Annotation: This clone was engineered to express the complete ORF with an expression tag. Expression varies depending on the nature of the gene.

Components: The ORF clone is ion-exchange column purified and shipped in a 2D barcoded Matrix tube containing 10ug of transfection-ready, dried plasmid DNA (reconstitute with 100 ul of water).

Reconstitution Method:

1. Centrifuge at 5,000xg for 5min.
2. Carefully open the tube and add 100ul of sterile water to dissolve the DNA.
3. Close the tube and incubate for 10 minutes at room temperature.
4. Briefly vortex the tube and then do a quick spin (less than 5000xg) to concentrate the liquid at the bottom.
5. Store the suspended plasmid at -20°C. The DNA is stable for at least one year from date of shipping when stored at -20°C.

RefSeq: [NM_052865.4](#)

RefSeq Size: 2142 bp

RefSeq ORF: 1035 bp

Locus ID: 92667

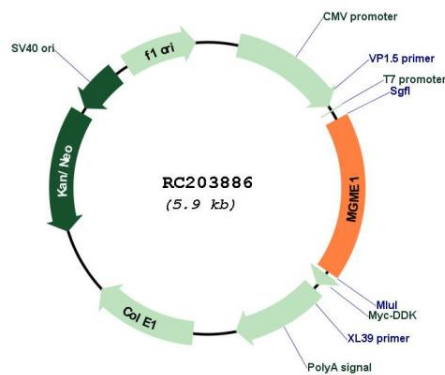
UniProt ID: [Q9BQP7](#)

Cytogenetics: 20p11.23

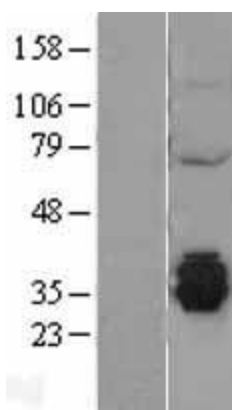
MW: 39.4 kDa

Gene Summary: The protein encoded by this gene is a nuclear-encoded mitochondrial protein necessary for the maintenance of mitochondrial genome synthesis. The encoded protein is a RecB-type exonuclease and primarily cleaves single-stranded DNA. Defects in this gene have been associated with mitochondrial DNA depletion syndrome-11. Three transcript variants encoding different isoforms have been found for this gene. [provided by RefSeq, Jul 2015]

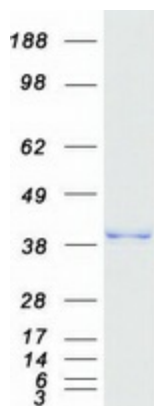
Product images:



Circular map for RC203886



Western blot validation of overexpression lysate (Cat# [LY403263]) using anti-DDK antibody (Cat# [TA50011-100]). Left: Cell lysates from untransfected HEK293T cells; Right: Cell lysates from HEK293T cells transfected with RC203886 using transfection reagent MegaTran 2.0 (Cat# [TT210002]).



Coomassie blue staining of purified MGME1 protein (Cat# [TP303886]). The protein was produced from HEK293T cells transfected with MGME1 cDNA clone (Cat# RC203886) using MegaTran 2.0 (Cat# [TT210002]).