

Product datasheet for **RC203881**

KMT5C (NM_032701) Human Tagged ORF Clone

Product data:

Product Type:	Expression Plasmids
Product Name:	KMT5C (NM_032701) Human Tagged ORF Clone
Tag:	Myc-DDK
Symbol:	KMT5C
Synonyms:	Suv4-20h2; SUV420H2
Mammalian Cell Selection:	Neomycin
Vector:	pCMV6-Entry (PS100001)
E. coli Selection:	Kanamycin (25 ug/mL)



[View online »](#)

ORF Nucleotide Sequence:

>RC203881 representing NM_032701
 Red=Cloning site Blue=ORF Green=Tags(s)

TTTTGTAATACGACTCACTATAGGGCGGCCGGAATTCGTCGACTGGATCCGGTACCGAGGAGATCTGCC
 GCC**CGCATCGCC**

ATGGGGCCCGACAGAGTGACAGCACGAGAAGTGTGCGAGAACGACGACCTGGCCACCAGCCTCGTCCTGG
 ACCCTACCTCGTTTCCGCACCCATAAGATGAACGTAGCCCTGTGCCCCCTGCGGGCAGACAGCA
 CCTGCGCTCAGCGCTGAAACTTTCCTGAGGCAGCGGGACCTGGAGGCTGCGTACCGGGCCCTGACGCTG
 GGAGGCTGGACGGCCGCTACTTCCAGAGCCGGGGCCGCGGCAGGAGGCTGCCCTCAAGACCCACGTCT
 ATCGCTACCTCCGTGCCTTCTGCCGAAAGTGGCTTTACCATCTGCCCTGCACGCGCTACTCCATGGA
 GACCAACGGGGCAAGATCGTGTCCACTCGTCTTGGAAAAGAATGAGAAGCTGGAGCTGCTGGTGGGC
 TGCATTGCAGAGCTGCGGGAGGCAGATGAGGGGCTGCTGAGGGCCGGTGAAGTACTTCAGCATCATGT
 ACTCAACCCGCAAGCGGAGTGTCTAGCTGTGGTGGGCCAGCCGCTTCAACCATGACTGCAAAC
 CAACTGCAAGTTTGTGCCTGCAGATGGGAACGCAGCCTGCGTGAAGGTGCTCCGGGACATTGAGCCTGGG
 GACGAGGTGACATGCTTCTACGGCGAGGGCTTCTTCGGCGAGAAGAATGAGCACTGTGAATGCCACACCT
 GTGAGAGGAAAGGTGAAGGAGCTTCCGAACCAGGCCTAGGGAGCCCGCTTGGCCACCACGGCCCTGGA
 CAAGTACCAGCTGCGTGAGACCAAGCGGCGGTGCAGCAAGGCCTGGACAGTGGCAGCCGACAGGGCCTG
 CTGGGCCCTCGGGCTGCGTGCACCCATCCCGCTGCGCCGGGACCCATTCTGCGCCGCTGCCAGCCCC
 TGCGCCTGCCAGCCTGCAGCGCCCGCCAGACCTCACCCCTCTGGCTCCAGTGGCTGCTCAGCCCCA
 GCCCGAGTGGGCCCGGAAGCGCCGACGCCCGCCCGGAGGGCCCAAGTGTCTCCACCCACCAC
 GCTGCCCGCTCTCCCTGCACCGATGGGAGGCTGTGGCCCCACTGCCGCTGCGAGGAGAGGCCCTGG
 TGCCCCGGGCCAGCCCCACGCCCGCTGGGCCCTCAGCAGGACTGGCACTGGGCCCGGCGCTATGG
 GCTGCCTTACGTGGTGCCTGTGGACCTTCGTGCGCTGGCCCCAGCCCCACCAGTACCCAGCCCCCTGCT
 GGGACCCAGGCCCATCCTGATCCCGAAGCAGGCCCTCGCCTTCGCCCTTCTCCCCACCAAGCGCC
 TACGGCTGGTGGTCAAGCACGGCTCCATCGACCTGGATGTGCGCGGTGAAGAGCTG

ACGCGTACGCGGCCGCTCGAGCAGAACTCATCTCAGAAGAGGATCTGGCAGCAAATGATATCCTGGATT
 ACAAGGATGACGACGATAAGGTTAA

Protein Sequence:

>RC203881 representing NM_032701
 Red=Cloning site Green=Tags(s)

MGPDRVTARELCENDDLATSLVLDPYLGFRTHKMNVSPVPLRRQQLHLSALETFLRQRDLEAAYRALTL
 GGWTARYFQSRGPRQEALKTHVYRYLRAFLPESGFTILPCTRYSMETNGAKIVSTRAWKKNEKLELLVG
 CIAELREADEGLLRAGENDFSIMYSTRKRSALWLPAAFINHDCKPNCKFVPADGNAACVKVLRDIEPG
 DEVTFCFYGEGFFGEKNEHCEHTCERKGEFAFTRPREPALPPRPLDKYQLRETKRRLQQGLDSGSRQGL
 LGPRACVHPSPLRRDPFCAACQPLRLPACSARPDTSPLWLQWLPQPQPRVPRKRRRPRRRAPVLSHH
 AARVSLHRWGGCGPHCLRGEALVALGQPPHARWAPQDQWHWARYGLPYVVRVDLRLAPAPPATPAPA
 GTPGPILIPKQALAFAPFSPPKRLRLVSHGSIDLVDVGGEEL

TRTRPLEQKLISEEDLAANDILDYKDDDDKV

Chromatograms:

https://cdn.origene.com/chromatograms/mg2764_g01.zip

Restriction Sites:

Sgfl-Mlul

Cloning Scheme:


ACCN: NM_032701

ORF Size: 1386 bp

OTI Disclaimer: The molecular sequence of this clone aligns with the gene accession number as a point of reference only. However, individual transcript sequences of the same gene can differ through naturally occurring variations (e.g. polymorphisms), each with its own valid existence. This clone is substantially in agreement with the reference, but a complete review of all prevailing variants is recommended prior to use. [More info](#)

OTI Annotation: This clone was engineered to express the complete ORF with an expression tag. Expression varies depending on the nature of the gene.

Components: The ORF clone is ion-exchange column purified and shipped in a 2D barcoded Matrix tube containing 10ug of transfection-ready, dried plasmid DNA (reconstitute with 100 ul of water).

- Reconstitution Method:**
1. Centrifuge at 5,000xg for 5min.
 2. Carefully open the tube and add 100ul of sterile water to dissolve the DNA.
 3. Close the tube and incubate for 10 minutes at room temperature.
 4. Briefly vortex the tube and then do a quick spin (less than 5000xg) to concentrate the liquid at the bottom.
 5. Store the suspended plasmid at -20°C. The DNA is stable for at least one year from date of shipping when stored at -20°C.

RefSeq: [NM_032701.4](#)

RefSeq Size: 2297 bp

RefSeq ORF: 1389 bp

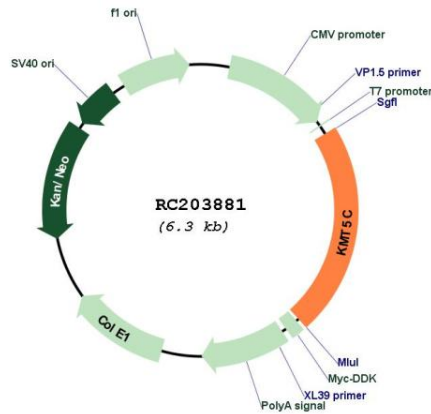
Locus ID: 84787

UniProt ID: [Q86Y97](#)

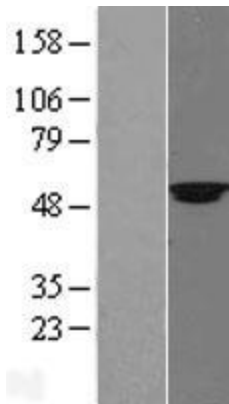
Cytogenetics: 19q13.42

Protein Families: Druggable Genome
Protein Pathways: Lysine degradation
MW: 51.9 kDa
Gene Summary: SUV420H2 and the related enzyme SUV420H1 (MIM 610881) function as histone methyltransferases that specifically trimethylate nucleosomal histone H4 (see MIM 602822) on lysine-20 (K20) (Schotta et al., 2004 [PubMed 15145825]).[supplied by OMIM, Dec 2009]

Product images:



Circular map for RC203881



Western blot validation of overexpression lysate (Cat# [LY409973]) using anti-DDK antibody (Cat# [TA50011-100]). Left: Cell lysates from untransfected HEK293T cells; Right: Cell lysates from HEK293T cells transfected with RC203881 using transfection reagent MegaTran 2.0 (Cat# [TT210002]).