

Product datasheet for RC203871

SCAMP3 (NM_052837) Human Tagged ORF Clone

Product data:

Product Type:	Expression Plasmids
Product Name:	SCAMP3 (NM_052837) Human Tagged ORF Clone
Tag:	Myc-DDK
Symbol:	SCAMP3
Synonyms:	C1orf3
Mammalian Cell Selection:	Neomycin
Vector:	pCMV6-Entry (PS100001)
E. coli Selection:	Kanamycin (25 ug/mL)
ORF Nucleotide Sequence:	>RC203871 ORF sequence Red=Cloning site Blue=ORF Green=Tags(s)

TTTTGTAATACGACTCACTATAGGGCGGCCGGAATTCGTCGACTGGATCCGGTACCGAGGAGATCTGCC
GCC**CGATCGCC**

ATGGCTCAGAGCAGAGACGGCGGAAACCCGTTCCGCCGAGCCAGCGAGCTTGACAACCCCTTTCAGCCAC
CACCAGCCTATGAGCCTCAGCCCTGCCCATTCGCTCCACCCTCAGCTCCCTCCTTGACGCCCTCGAG
AAAGCTCAGCCCCACAGAACCTAAGAACTATGGCTCATAACGACTCAGGCCTCAGCTGCAGCAGCCACA
GCTGAGCTGCTGAAGAACAGGAGGAGCTCAACCGGAAGGCAGAGGAGTTGGACCGAAGGGAGCGAGAGC
TGCAGCATGCTGCCCTGGGGGACAGCTACTCGACAGAACAATTGGCCCTCTACCTTCTTTTGTCC
AGTTCAGCCCTGCTTTTTCCAGGACATCTCCATGGAGATCCCCAAGAATTTCAGAAGACTGTATCCACC
ATGTAACCTCTGGATGTGAGCAGCTGGCTTCTCCTGAATTCCTCGCCTGCCTGCCAGCTTCT
GTGTGAAACCAACAATGGCGCAGGCTTTGGGCTTCTATCCTCTGGGTCTCTTTTCACTCCCTGCTC
CTTTGTCTGCTGGTACCGCCCCATGTATAAGGCTTCCGGAGTGACAGTTCATTCAATTTCTTGTTTTC
TTCTTCATTTTCTTGTCCAGGATGTGCTCTTGTCTCCAGGCCATTGGTATCCAGGTTGGGGATTCA
GTGGCTGGATCTCTGCTCTGGTGGTGCCGAAGGCAACACAGCAGTATCCGTGCTCATGCTGCTGGTCCG
CCTGCTTCACTGGCATTGCTGTGCTAGGAATTGTCATGCTGAAACGGATCCACTCCTTATACCGCCGC
ACAGGTGCCAGCTTTCAGAAGGCCAGCAAGAATTTGCTGCTGGTGTCTTCTCCAACCTCGCGGTGCCAA
CCGCAGCTGCCAATGCAGCCGCTGGGGCTGCTGAAAATGCCTTCCGGGCCCGC

ACGCGTACGCGGCCGCTCGAGCAGAAACTCATCTCAGAAGAGGATCTGGCAGCAAATGATATCCTGGATT
ACAAGGATGACGACGATAAGGTTTAA



[View online »](#)

Protein Sequence: >RC203871 protein sequence
Red=Cloning site Green=Tags(s)

MAQSRDGGNPF AEPSELNPFQPPPAYEPPAPAPLPPPSAPSLQPSRKLSPTEPKNYGSYSTQASAAAAT
 AELLKKQEELNRKAEELDRRERELQHAALGGTATRQNNWPPLPSFCPVQPCFFQDISMEIPQEFQKTVST
 MYLWMCSTLALLLNFLACLASFVETNNGAGFGLSILVWLLFTPCSFVCWYRPMYKAFRSDSSFNFVVF
 FFIFVVDVLFVLQAIGIPGWGFSGWISALVVPKGNTAVSVLMLLVALLFTGIAVLGIVMLKRIHSLYRR
 TGASFQKAQEF AAGVFSNPAVRTAAANAAAGAENAFRAP

TRTRPLEQKLISEEDLAANDILDYKDDDDKV

Chromatograms: https://cdn.origene.com/chromatograms/mk6305_e02.zip

Restriction Sites: SgfI-MluI

Cloning Scheme:



ACCN: NM_052837

ORF Size: 963 bp

OTI Disclaimer: The molecular sequence of this clone aligns with the gene accession number as a point of reference only. However, individual transcript sequences of the same gene can differ through naturally occurring variations (e.g. polymorphisms), each with its own valid existence. This clone is substantially in agreement with the reference, but a complete review of all prevailing variants is recommended prior to use. [More info](#)

OTI Annotation: This clone was engineered to express the complete ORF with an expression tag. Expression varies depending on the nature of the gene.

Components: The ORF clone is ion-exchange column purified and shipped in a 2D barcoded Matrix tube containing 10ug of transfection-ready, dried plasmid DNA (reconstitute with 100 ul of water).

Reconstitution Method:

1. Centrifuge at 5,000xg for 5min.
2. Carefully open the tube and add 100ul of sterile water to dissolve the DNA.
3. Close the tube and incubate for 10 minutes at room temperature.
4. Briefly vortex the tube and then do a quick spin (less than 5000xg) to concentrate the liquid at the bottom.
5. Store the suspended plasmid at -20°C. The DNA is stable for at least one year from date of shipping when stored at -20°C.

RefSeq: [NM_052837.3](#)

RefSeq Size: 1517 bp

RefSeq ORF: 966 bp

Locus ID: 10067

UniProt ID: [O14828](#)

Cytogenetics: 1q22

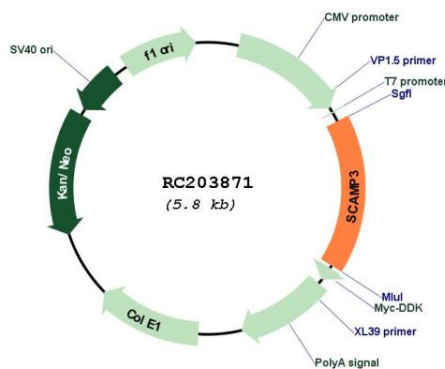
Domains: SCAMP

Protein Families: Transmembrane

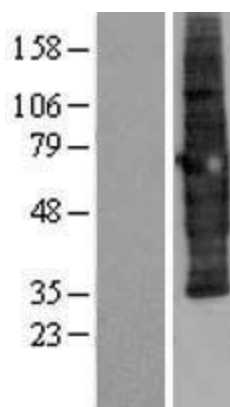
MW: 35.2 kDa

Gene Summary: This gene encodes an integral membrane protein that belongs to the secretory carrier membrane protein family. The encoded protein functions as a carrier to the cell surface in post-golgi recycling pathways. This protein is also involved in protein trafficking in endosomal pathways. Two transcript variants encoding different isoforms have been found for this gene. [provided by RefSeq, May 2011]

Product images:



Circular map for RC203871



Western blot validation of overexpression lysate (Cat# [LY409448]) using anti-DDK antibody (Cat# [TA50011-100]). Left: Cell lysates from untransfected HEK293T cells; Right: Cell lysates from HEK293T cells transfected with RC203871 using transfection reagent MegaTran 2.0 (Cat# [TT210002]).