

Product datasheet for RC203819

CD14 (NM_000591) Human Tagged ORF Clone

Product data:

Product Type:	Expression Plasmids
Product Name:	CD14 (NM_000591) Human Tagged ORF Clone
Tag:	Myc-DDK
Symbol:	CD14
Mammalian Cell Selection:	Neomycin
Vector:	pCMV6-Entry (PS100001)
E. coli Selection:	Kanamycin (25 ug/mL)
ORF Nucleotide Sequence:	>RC203819 representing NM_000591 Red=Cloning site Blue=ORF Green=Tags(s)

TTTTGTAATACGACTCACTATAGGGCGGCCGGAATTCGTCGACTGGATCCGGTACCGAGGAGATCTGCC
GCC**CGATCGCC**

ATGGAGCGCGCTCCTGCTTGTGCTGCTGCTGCTGCCGCTGGTGCACGTCTCTGCGACCAGCCAGAAC
CTTGTGAGCTGGACGATGAAGATTTCCGCTGCGTCTGCAACTTCTCCGAACCTCAGCCCGACTGGTCCGA
AGCCTTCCAGTGTGTGCTGCAGTAGAGGTGGAGATCCATGCCGGCGGTCTAACCTAGAGCCGTTTCTA
AAGCGCGTCGATGCGGACGCCACCCCGCGCAGTATGCTGACACGGTCAAGGCTCTCCGCTGCGGCGGC
TCACAGTGGGAGCCGACAGGTTCTGCTCAGCTACTGGTAGGGCCCTGCGTGTGCTAGCGTACTCCCG
CCTCAAGGAAGTACGCTCGAGGACCTAAAGATAACCGGCACCATGCCTCCGCTGCCTCTGGAAGCCACA
GGACTTGCACTTTCCAGCTTGGCCTACGCAACGTGTCGTGGGCGACAGGGCGTTCTTGGCTCGCCGAGC
TGCAGCAGTGGCTCAAGCCAGGCCTCAAGGTAAGTACTGAGCATTGCCAAGCACACTCGCCTGCCTTTTCTG
CGAACAGGTTTCGCGCCTTCCCGCCCTTACCAGCCTAGACCTGTCTGACAATCCTGGACTGGGCGAACGC
GGACTGATGGCGGCTCTCTGTCCCACAAGTCCCGGCCATCCAGAATCTAGCGCTGCGCAACACAGGAA
TGGAGACGCCACAGGCGTGTGCGCCGACTGGCGGCGGAGGTGTCAGCCCCACAGCCTAGACCTCAG
CCACAACCTGCTGCGCGCCACCGTAAACCCTAGCGCTCCGAGATGCATGTGGTCCAGCGCCCTGAACCTC
CTCAATCTGTCGTTTCGCTGGGCTGGAACAGGTGCCTAAAGGACTGCCAGCCAAGCTCAGAGTGTCTGATC
TCAGCTGCAACAGACTGAACAGGGCGCCGAGCCTGACGAGCTGCCCGAGGTGGATAACCTGACACTGGA
CGGAATCCCTTCTGTTCCCTGGAAGTGCCTCCCCACGAGGGCTCAATGAACTCCGCGGTGGTCCCA
GCCTGTGCACGTTTCGACCTGTCCGTTGGGGGTGTCCGGAACCCTGGTGTCTCCAAGGGGCCCGGGGT
TTGCC

ACGCGTACGCGGCCGCTCGAGCAGAACTCATCTCAGAAGAGGATCTGGCAGCAAATGATATCCTGGATT
ACAAGGATGACGACGATAAGGTTTAA



[View online »](#)

Protein Sequence: >RC203819 representing NM_000591
Red=Cloning site Green=Tags(s)

MERASCLLLLLLPLVHVSATTPEPCELDDEDFRCVCFNFSEPQPDWSEAFQCVSAVEVEIHAGGLNLEPFL
 KRVDADADPRQYADTVKALRVRRLLTVGAAQVPAQLLVGALRVLAYSRKELTLEDLKITGTMPPLEAT
 GLALSSLRLRNVSATGRSWLAELQQWLKPKLVLSIAQAHSPAFSCEQVRAFPAALTSLDLSDNPLGER
 GLMAALCPHKFPAIQNLALRNTGMETPTGVCAALAAAGVQPHSLDLSHNSLRATVNPSPAPRCMWSSALNS
 LNL SFAGLEQVPKGLPAKLRVLDLSCNRLNRAPQPELPEVDNLTL DGNPFLVPGTALPHEGSMNSGVVP
 ACARSTLSVGVSGTLVLLQGARGFA

TRTRPLEQKLISEEDLAANDILDYKDDDDKV

Chromatograms: https://cdn.origene.com/chromatograms/mg2920_d01.zip

Restriction Sites: SgfI-MluI

Cloning Scheme:

Cloning sites used for ORF Shuttling:



ACCN: NM_000591

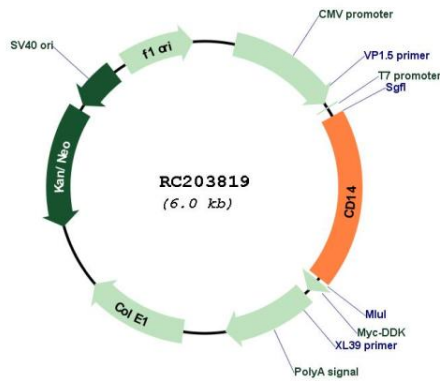
ORF Size: 1125 bp

OTI Disclaimer: Due to the inherent nature of this plasmid, standard methods to replicate additional amounts of DNA in E. coli are highly likely to result in mutations and/or rearrangements. Therefore, OriGene does not guarantee the capability to replicate this plasmid DNA. Additional amounts of DNA can be purchased from OriGene with batch-specific, full-sequence verification at a reduced cost. Please contact our customer care team at custsupport@origene.com or by calling 301.340.3188 option 3 for pricing and delivery.

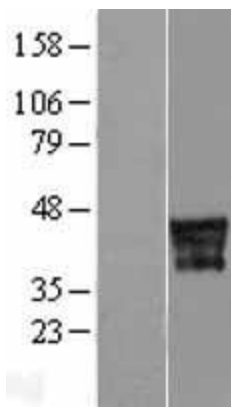
The molecular sequence of this clone aligns with the gene accession number as a point of reference only. However, individual transcript sequences of the same gene can differ through naturally occurring variations (e.g. polymorphisms), each with its own valid existence. This clone is substantially in agreement with the reference, but a complete review of all prevailing variants is recommended prior to use. [More info](#)

OTI Annotation:	This clone was engineered to express the complete ORF with an expression tag. Expression varies depending on the nature of the gene.
Components:	The ORF clone is ion-exchange column purified and shipped in a 2D barcoded Matrix tube containing 10ug of transfection-ready, dried plasmid DNA (reconstitute with 100 ul of water).
Reconstitution Method:	<ol style="list-style-type: none">1. Centrifuge at 5,000xg for 5min.2. Carefully open the tube and add 100ul of sterile water to dissolve the DNA.3. Close the tube and incubate for 10 minutes at room temperature.4. Briefly vortex the tube and then do a quick spin (less than 5000xg) to concentrate the liquid at the bottom.5. Store the suspended plasmid at -20°C. The DNA is stable for at least one year from date of shipping when stored at -20°C.
RefSeq:	NM_000591.4
RefSeq Size:	1623 bp
RefSeq ORF:	1128 bp
Locus ID:	929
UniProt ID:	P08571
Cytogenetics:	5q31.3
Domains:	LRR
Protein Families:	Adult stem cells, Druggable Genome, Embryonic stem cells, ES Cell Differentiation/IPS, Transmembrane
Protein Pathways:	Hematopoietic cell lineage, MAPK signaling pathway, Pathogenic Escherichia coli infection, Regulation of actin cytoskeleton, Toll-like receptor signaling pathway
MW:	40.08 kDa
Gene Summary:	The protein encoded by this gene is a surface antigen that is preferentially expressed on monocytes/macrophages. It cooperates with other proteins to mediate the innate immune response to bacterial lipopolysaccharide, and to viruses. This gene has been identified as a target candidate in the treatment of SARS-CoV-2-infected patients to potentially lessen or inhibit a severe inflammatory response. Alternative splicing results in multiple transcript variants encoding the same protein. [provided by RefSeq, Aug 2020]

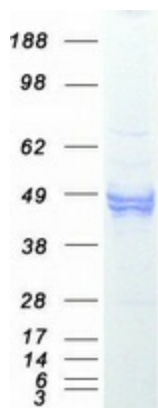
Product images:



Circular map for RC203819



Western blot validation of overexpression lysate (Cat# [LY424624]) using anti-DDK antibody (Cat# [TA50011-100]). Left: Cell lysates from untransfected HEK293T cells; Right: Cell lysates from HEK293T cells transfected with RC203819 using transfection reagent MegaTran 2.0 (Cat# [TT210002]).



Coomassie blue staining of purified CD14 protein (Cat# [TP303819]). The protein was produced from HEK293T cells transfected with CD14 cDNA clone (Cat# RC203819) using MegaTran 2.0 (Cat# [TT210002]).