

Product datasheet for RC203806

HSD17B8 (NM_014234) Human Tagged ORF Clone

Product data:

Product Type:	Expression Plasmids
Product Name:	HSD17B8 (NM_014234) Human Tagged ORF Clone
Tag:	Myc-DDK
Symbol:	HSD17B8
Synonyms:	D6S2245E; dj1033B10.9; FABG; FABGL; H2-KE6; HKE6; KE6; RING2; SDR30C1
Mammalian Cell Selection:	Neomycin
Vector:	pCMV6-Entry (PS100001)
E. coli Selection:	Kanamycin (25 ug/mL)
ORF Nucleotide Sequence:	>RC203806 ORF sequence Red=Cloning site Blue=ORF Green=Tags(s)

TTTTGTAATACGACTCACTATAGGGCGGCCGGAATTCGTCGACTGGATCCGGTACCGAGGAGATCTGCC
GCC**CGATCGCC**

ATGGCGTCTCAGCTCCAGAACCGACTCCGCTCCGCACTGGCCTTGGTCACAGGTGCGGGGAGCGGCATCG
GCCGAGCGGTCACTGTACGCCTGGCCGGAGAGGGGGCCACCGTAGCTGCCTGCGACTGGACCGGGCAGC
GGCACAGGAGACGGTGGCGTCTGGGCGGGCCAGGGAGCAAGGAGGGCCGCCCGAGGGAACCATGCT
GCCTTCCAGGCTGACGTGTCTGAGGCCAGGGCCCGCAGGTGCCTGCTGGAACAAGTGCAGGCCTGCTTTT
CTCGCCACCATCTGCTGTTGTGTCCTGTGCGGGCATCACCCAGGATGAGTTTCTGCTGCACATGTCTGA
GGATGACTGGGACAAAGTCATAGCTGTCAACCTCAAGGGCACCTTCTAGTCACTCAGGCTGCAGCACAA
GCCCTGGTGTCCAATGGTTGTCGTGGTTCCATCATCAACATCAGTAGCATCGTAGGAAAGTGGGGAACG
TGGGGCAGACAAACTATGCAGCATCCAAGGCTGGAGTGATTGGGCTGACCCAGACCCGAGCCCGGGAGCT
TGGACGACATGGGATCCGCTGTAACCTGTCTCCAGGGTTCATTGCAACCCCATGACACAGAAAGTG
CCACAGAAAGTGGTGGACAAGATTACTGAAATGATCCCGATGGGACACTTGGGGACCCCTGAGGATGTGG
CAGATGTGGTCCGATTCTTGGCATCTGAAGATAGTGGATACATCACAGGGACCTCAGTGGAAAGTCACTGG
AGGTCTTTTCATG

ACGCGTACGCGGCCGCTCGAGCAGAAACTCATCTCAGAAGAGGATCTGGCAGCAAATGATATCCTGGATT
ACAAGGATGACGACGATAAGGTTTAA



[View online »](#)

Protein Sequence: >RC203806 protein sequence
 Red=Cloning site Green=Tags(s)

MASQLQNRLRSALALVTGAGSGIGRAVSVRLAGEGATVAACDLDRAAAQETVRLGPGPSKEGPPRGNHA
 AFQADVSEARAARCLLEQVQACFSRPPSVVVSCAGITQDEFLLHMSEDDWDKVIAVNLKGTFLVTQAAAQ
 ALVSNCGRGSIIINISSIVGKVGNGVGTNYAASKAGVIGLTQTAARELRHGRGIRCNVLPGF IATPMTQKV
 PQKVVDKITEMIPMGLGDPEDVADVVAFLASEDSGYITGTSVEVTGGLFM

TRTRPLEQKLISEEDLAANDILDYKDDDDKV

Chromatograms: https://cdn.origene.com/chromatograms/mk6302_d09.zip

Restriction Sites: SgfI-MluI

Cloning Scheme:

Cloning sites used for ORF Shuttling:



* The last codon before the Stop codon of the ORF

ACCN: NM_014234

ORF Size: 783 bp

OTI Disclaimer: The molecular sequence of this clone aligns with the gene accession number as a point of reference only. However, individual transcript sequences of the same gene can differ through naturally occurring variations (e.g. polymorphisms), each with its own valid existence. This clone is substantially in agreement with the reference, but a complete review of all prevailing variants is recommended prior to use. [More info](#)

OTI Annotation: This clone was engineered to express the complete ORF with an expression tag. Expression varies depending on the nature of the gene.

Components: The ORF clone is ion-exchange column purified and shipped in a 2D barcoded Matrix tube containing 10ug of transfection-ready, dried plasmid DNA (reconstitute with 100 ul of water).

Reconstitution Method:

1. Centrifuge at 5,000xg for 5min.
2. Carefully open the tube and add 100ul of sterile water to dissolve the DNA.
3. Close the tube and incubate for 10 minutes at room temperature.
4. Briefly vortex the tube and then do a quick spin (less than 5000xg) to concentrate the liquid at the bottom.
5. Store the suspended plasmid at -20°C. The DNA is stable for at least one year from date of shipping when stored at -20°C.

RefSeq: [NM_014234.5](#)

RefSeq Size: 1002 bp

RefSeq ORF: 786 bp

Locus ID: 7923

UniProt ID: [Q92506](#)

Cytogenetics: 6p21.32

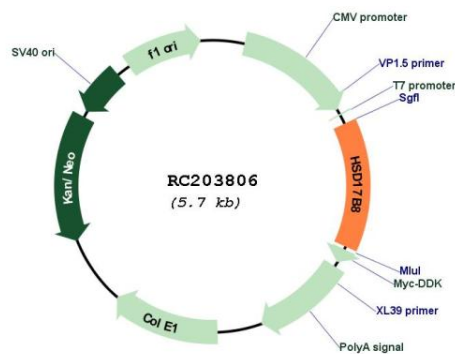
Protein Families: Druggable Genome

Protein Pathways: Androgen and estrogen metabolism, Metabolic pathways

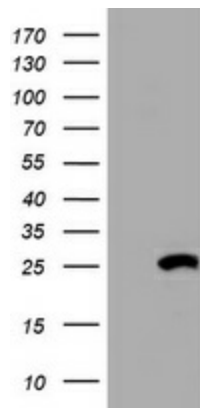
MW: 27 kDa

Gene Summary: In mice, the Ke6 protein is a 17-beta-hydroxysteroid dehydrogenase that can regulate the concentration of biologically active estrogens and androgens. It is preferentially an oxidative enzyme and inactivates estradiol, testosterone, and dihydrotestosterone. However, the enzyme has some reductive activity and can synthesize estradiol from estrone. The protein encoded by this gene is similar to Ke6 and is a member of the short-chain dehydrogenase superfamily. An alternatively spliced transcript of this gene has been detected, but the full-length nature of this variant has not been determined. [provided by RefSeq, Jul 2008]

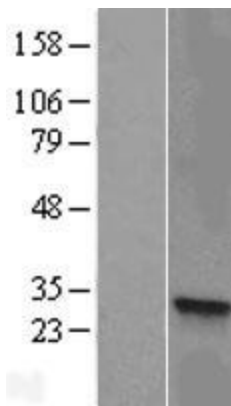
Product images:



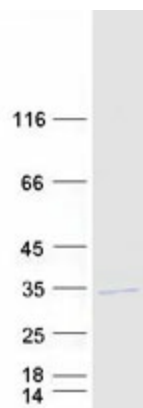
Circular map for RC203806



HEK293T cells were transfected with the pCMV6-ENTRY control (Cat# [PS100001], Left lane) or pCMV6-ENTRY HSD17B8 (Cat# RC203806, Right lane) cDNA for 48 hrs and lysed. Equivalent amounts of cell lysates (5 ug per lane) were separated by SDS-PAGE and immunoblotted with anti-HSD17B8(Cat# [TA800478]). Positive lysates [LY415425] (100ug) and [LC415425] (20ug) can be purchased separately from OriGene.



Western blot validation of overexpression lysate (Cat# [LY415425]) using anti-DDK antibody (Cat# [TA50011-100]). Left: Cell lysates from untransfected HEK293T cells; Right: Cell lysates from HEK293T cells transfected with RC203806 using transfection reagent MegaTran 2.0 (Cat# [TT210002]).



Coomassie blue staining of purified HSD17B8 protein (Cat# [TP303806]). The protein was produced from HEK293T cells transfected with HSD17B8 cDNA clone (Cat# RC203806) using MegaTran 2.0 (Cat# [TT210002]).