

Product datasheet for RC203767L3

SERPING1 (NM_000062) Human Tagged Lenti ORF Clone

Product data:

Product Type:	Expression Plasmids
Product Name:	SERPING1 (NM_000062) Human Tagged Lenti ORF Clone
Tag:	Myc-DDK
Symbol:	SERPING1
Synonyms:	C1IN; C1INH; C1NH; HAE1; HAE2
Mammalian Cell Selection:	Puromycin
Vector:	pLenti-C-Myc-DDK-P2A-Puro (PS100092)
E. coli Selection:	Chloramphenicol (34 ug/mL)
ORF Nucleotide Sequence:	The ORF insert of this clone is exactly the same as(RC203767).
Restriction Sites:	SgfI-MluI
Cloning Scheme:	

Cloning sites used for ORF Shuttling:



* The last codon before the Stop codon of the ORF.

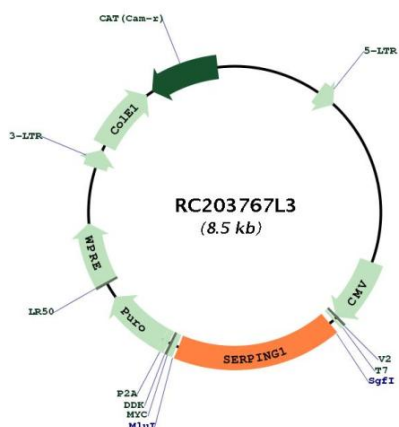
ACCN:	NM_000062
ORF Size:	1500 bp



[View online »](#)

OTI Disclaimer:	The molecular sequence of this clone aligns with the gene accession number as a point of reference only. However, individual transcript sequences of the same gene can differ through naturally occurring variations (e.g. polymorphisms), each with its own valid existence. This clone is substantially in agreement with the reference, but a complete review of all prevailing variants is recommended prior to use. More info
OTI Annotation:	This clone was engineered to express the complete ORF with an expression tag. Expression varies depending on the nature of the gene.
Components:	The ORF clone is ion-exchange column purified and shipped in a 2D barcoded Matrix tube containing 10ug of transfection-ready, dried plasmid DNA (reconstitute with 100 ul of water).
Reconstitution Method:	<ol style="list-style-type: none">1. Centrifuge at 5,000xg for 5min.2. Carefully open the tube and add 100ul of sterile water to dissolve the DNA.3. Close the tube and incubate for 10 minutes at room temperature.4. Briefly vortex the tube and then do a quick spin (less than 5000xg) to concentrate the liquid at the bottom.5. Store the suspended plasmid at -20°C. The DNA is stable for at least one year from date of shipping when stored at -20°C.
RefSeq:	NM_000062.2
RefSeq Size:	1984 bp
RefSeq ORF:	1503 bp
Locus ID:	710
UniProt ID:	P05155
Cytogenetics:	11q12.1
Domains:	SERPIN
Protein Families:	Druggable Genome, Secreted Protein
Protein Pathways:	Complement and coagulation cascades
MW:	55.2 kDa
Gene Summary:	This gene encodes a highly glycosylated plasma protein involved in the regulation of the complement cascade. Its encoded protein, C1 inhibitor, inhibits activated C1r and C1s of the first complement component and thus regulates complement activation. It is synthesized in the liver, and its deficiency is associated with hereditary angioneurotic oedema (HANE). Alternative splicing results in multiple transcript variants encoding the same isoform. [provided by RefSeq, May 2020]

Product images:



Circular map for RC203767L3