

Product datasheet for **RC203487**

ENTPD6 (NM_001247) Human Tagged ORF Clone

Product data:

Product Type:	Expression Plasmids
Product Name:	ENTPD6 (NM_001247) Human Tagged ORF Clone
Tag:	Myc-DDK
Symbol:	ENTPD6
Synonyms:	CD39L2; dj738P15.3; IL-6SAG; IL6ST2; NTPDase-6
Mammalian Cell Selection:	Neomycin
Vector:	pCMV6-Entry (PS100001)
E. coli Selection:	Kanamycin (25 ug/mL)



[View online »](#)

ORF Nucleotide Sequence:

>RC203487 ORF sequence
 Red=Cloning site Blue=ORF Green=Tags(s)

TTTTGTAATACGACTCACTATAGGGCGGCCGGAATTCGTCGACTGGATCCGGTACCGAGGAGATCTGCC
 GCC**CGGATCGCC**

ATGAAAAAGGTATCCGTTATGAAACTCCAGAAAAACGAGCTACATTTTTCAGCCGCAGCACGGTCTT
 GGCAAACAAGGATGAGAAAAATATCCAACCACGGGAGCCTGCGGGTGGCGAAGGTGGCATACCCCTGGG
 GCTGTGTGGGCGTGTTCATCTATGTTGCCTACATCAAGTGGCACCGGGCCACCGCCACCCAGGCTTC
 TTCAGCATCACCAGGGCAGCCCCGGGGCCCGGTGGGGTCAAGCAGGCCACAGCCCCCTGGGACAGCTG
 CAGACGGGCACGAGGTCTTCTACGGATCATGTTTGTGAGGAAAGCACTGGCACCCGAGTACACGTCTT
 CCAGTTACCCGGCCCCCAGAGAACTCCACGTTAACCCACGAAACCTCAAAGCACTGAAGCCAGGT
 CTTTCTGCCTATGCTGATGATGTTGAAAAGAGCGCTCAGGAATCCGGAACTACTGGATGTTGCTAAAC
 AGGACATTCGGTTCGACTTCTGGAAGGCCACCCCTCTGGTCTCAAGGCCACAGCTGGCTTACGCCTGTT
 ACCTGGAGAAAAGGCCAGAAGTACTGCAGAAGGTGAAAGAAGTATTTAAAGCATCGCCTTTCCTTGTA
 GGGGATGACTGTGTTCCATCATGAACGGAACAGATGAAGGCGTTTCGGGCTGGATCACCATCAACTTCC
 TGACAGGCAGCTTGAAAACCTCCAGGAGGGAGCAGCGTGGGCATGCTGGACTTGGGCGGAGGATCCACTCA
 GATCGCCTTCTGCCACGCGTGGAGGGCACCTGCAGGCCTCCCAACCCGGCTACCTGACGGCACTGCGG
 ATGTTTAAACAGGACCTACAAGCTCTATTCTTACAGCTACCTCGGGCTCGGGCTGATGTCGGCACGCTGG
 CGATCTGGGCGGCGTGGAGGGGCAGCTGCTAAGGATGGAAGGAGTGGTTCAGCCCTTCTTGTCTCC
 CAGTTTCAAAGGAGAGTGGGAACACGCAGAAGTACGTACAGGGTTTCAGGGCAGAAAGCAGCGGCAAGC
 CTGCACGAGCTGTGTGCTGCCAGAGTGTGAGAGTCCCTCAAACAGAGTGCACAGGACGGAGGAAGTGA
 AGCATGTGGACTTCTATGCTTTCTCTACTATTACGACCTTGCAGCTGGTGTGGGCTCATAGATCGCGA
 GAAGGGAGGCAGCCTGGTGGTGGGGACTTCGAGATCGCAGCCAAGTACGTGTGTGCGGACCTGGAGACA
 CAGCCGACAGAGCAGCCCTTCTCATGCATGGACCTCACCTACGTACGCTGCTACTCCAGGAGTTCGGCT
 TTCCAGGAGCAAAGTGTGAAGCTCACTCGGAAAATTGACAATGTTGAGACCAGCTGGGCTCTGGGGG
 CATTTTTCATTACATCGACTCCCTGAACAGACAGAAGAGTCCAGCCTCA

AG**CGGACCG**ACGCGTACGCGGCCGCTCGAGCAGAAACTCATCTCAGAAGAGGATCTGGCAGCAAATGATATCC
 TGGATTACAAGGATGACGACGATAAGGTTTAA

Protein Sequence:

>RC203487 protein sequence
 Red=Cloning site Green=Tags(s)

MKKGIRYETSRKTSYIFQPQHGPWQTRMRKISNHGSLRVAKVAYPLGLCVGVFIYVAYIKWHRATATQAF
 FSITRAAPGARWQQAHSPLGTAADGHEVFYIGIMFDAGSTGTRVHVVFQFTRPPRETPTLTHETFKALKPG
 LSAYADDVEKSAQGIRELLDVAQDIPDFWKATPLVLKATAGLRLLPGEKAQKLLQKVKEVFKASPFV
 GDDCVSIMNGTDEGVSAWITINFLTGSLKTPGGSSVGMMLDLGGSTQIAFLPRVEGTLQASPPGYLTALR
 MFNRTYKLYSYSYLLGLGLMSARLAILGGVEGQPAKDGKELVSPCLSPSFKGEWEHAEVTVYRVSQKAAAS
 LHELCAARVSEVLQNRVHRTEEVKHVDFYAFSYYDLAAGVGLIDAEKGGSLVVGDFEIAAKYVCRLET
 QPQSSPFCMDLTYVSLLLQEFGPRSKVLKLRKIDNVETSWALGAIHYIDSLNRQKSPAS

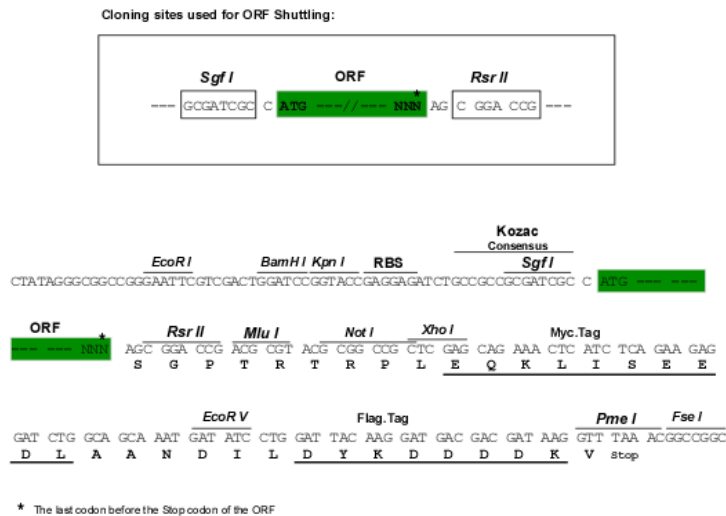
SGP**TRTRPLEQKLI**SEEDLAANDILDYKDDDDK**V**

Chromatograms:

https://cdn.origene.com/chromatograms/mk6190_a07.zip

Restriction Sites:

Sgfl-RsrII

Cloning Scheme:


ACCN: NM_001247

ORF Size: 2118 bp

OTI Disclaimer: The molecular sequence of this clone aligns with the gene accession number as a point of reference only. However, individual transcript sequences of the same gene can differ through naturally occurring variations (e.g. polymorphisms), each with its own valid existence. This clone is substantially in agreement with the reference, but a complete review of all prevailing variants is recommended prior to use. [More info](#)

OTI Annotation: This clone was engineered to express the complete ORF with an expression tag. Expression varies depending on the nature of the gene.

Components: The ORF clone is ion-exchange column purified and shipped in a 2D barcoded Matrix tube containing 10ug of transfection-ready, dried plasmid DNA (reconstitute with 100 ul of water).

Reconstitution Method:

1. Centrifuge at 5,000xg for 5min.
2. Carefully open the tube and add 100ul of sterile water to dissolve the DNA.
3. Close the tube and incubate for 10 minutes at room temperature.
4. Briefly vortex the tube and then do a quick spin (less than 5000xg) to concentrate the liquid at the bottom.
5. Store the suspended plasmid at -20°C. The DNA is stable for at least one year from date of shipping when stored at -20°C.

RefSeq: [NM_001247.5](#)

RefSeq Size: 2787 bp

RefSeq ORF: 1455 bp

Locus ID: 955

UniProt ID: [O75354](#)

Cytogenetics: 20p11.21

Domains: GDA1_CD39

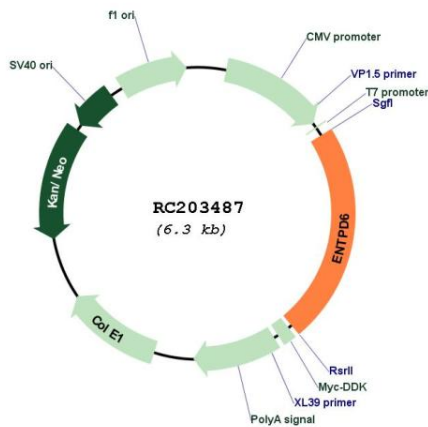
Protein Families: Secreted Protein, Transmembrane

Protein Pathways: Purine metabolism, Pyrimidine metabolism

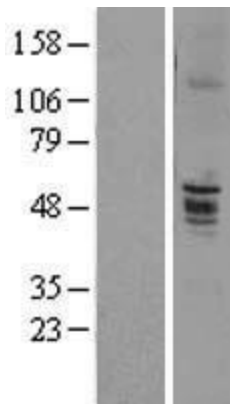
MW: 53.1 kDa

Gene Summary: ENTPD6 is similar to E-type nucleotidases (NTPases). NTPases, such as CD39, mediate catabolism of extracellular nucleotides. ENTPD6 contains 4 apyrase-conserved regions which are characteristic of NTPases. Alternative splicing results in multiple transcript variants encoding different isoforms. [provided by RefSeq, Dec 2015]

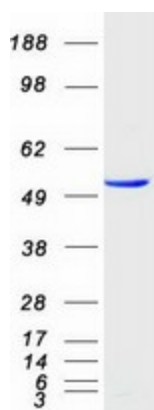
Product images:



Circular map for RC203487



Western blot validation of overexpression lysate (Cat# [LY400498]) using anti-DDK antibody (Cat# [TA50011-100]). Left: Cell lysates from untransfected HEK293T cells; Right: Cell lysates from HEK293T cells transfected with RC203487 using transfection reagent MegaTran 2.0 (Cat# [TT210002]).



Coomassie blue staining of purified ENTPD6 protein (Cat# [TP303487]). The protein was produced from HEK293T cells transfected with ENTPD6 cDNA clone (Cat# RC203487) using MegaTran 2.0 (Cat# [TT210002]).