

Product datasheet for **RC203320**

IFIT1 (NM_001548) Human Tagged ORF Clone

Product data:

Product Type:	Expression Plasmids
Product Name:	IFIT1 (NM_001548) Human Tagged ORF Clone
Tag:	Myc-DDK
Symbol:	IFIT1
Synonyms:	C56; G10P1; IFI-56; IFI-56K; IFI56; IFIT-1; IFNAI1; ISG56; P56; RNM561
Mammalian Cell Selection:	Neomycin
Vector:	pCMV6-Entry (PS100001)
E. coli Selection:	Kanamycin (25 ug/mL)



[View online »](#)

ORF Nucleotide Sequence:

>RC203320 ORF sequence
 Red=Cloning site Blue=ORF Green=Tags(s)

TTTTGTAATACGACTCACTATAGGGCGGCCGGAATTCGTCGACTGGATCCGGTACCGAGGAGATCTGCC
 GCC**CGCATCGCC**

ATGAGTACAAATGGTGATGATCATCAGGTCAAGGATAGTCTGGAGCAATTGAGATGTCACTTTACATGGG
 AGTTATCCATTGATGACGATGAAATGCCTGATTTAGAAAACAGAGTCTTGATCAGATTGAATTCCTAGA
 CACCAAATACAGTGTGGGAATACACAACCTACTAGCCTATGTGAAACACCTGAAAGGCCAGAATGAGGAA
 GCCCTGAAGAGCTTAAAAGAAGCTGAAAACCTAATGCAGGAAGAACATGACAACCAAGCAAATGTGAGGA
 GTCTGGTGACCTGGGCAACTTTGCCTGGATGTATTACCACATGGGCAGACTGGCAGAAGCCAGACTTA
 CCTGGACAAGGTGGAGAACATTTGCAAGAAGCTTTCAAATCCCTTCGCTATAGAATGGAGTGTCCAGAA
 ATAGACTGTGAGGAAGGATGGGCCTTGTGAAGTGTGGAGGAAAGAATTATGAACGGGCCAAGGCCTGCT
 TTGAAAAGGTGCTTGAAGTGGACCCTGAAAACCCGGAATCCAGCGCTGGGTATGCGATCTCTGCCTATCG
 CCTGGATGGCTTTAAATTAGCCACAAAAATCACAAAGCCATTTTCTTTGCTTCCCCTAAGGCAGGCTGTC
 CGCTTAAATCCAGACAATGGATATATTAAGGTTCTCCTTGCCCTGAAGCTTCAGGATGAAGGACAGGAA
 CTGAAGGAGAAAAAGTACATTGAAGAAGCTCTAGCCAACATGTCCTCACAGACCTATGCTTTTCGATATGC
 AGCCAAGTTTTACCGAAGAAAAGGCTCTGTGGATAAAGCTCTTGAGTTATTA AAAAGGCCTTGCAGGAA
 ACACCCACTTCTGTCTTACTGCATCACCAGATAGGGCTTTGCTACAAGGCACAAATGATCCAAATCAAGG
 AGGCTACAAAAGGGCAGCCTAGAGGGCAGAACAGAGAAAAGCTAGACAAAATGATAAGATCAGCCATATT
 TCATTTTGAATCTGCAGTGGAAAAAAGCCACATTTGAGGTGGCTCATCTAGACCTGGCAAGAATGTAT
 ATAGAAGCAGGCAATCACAGAAAAGCTGAAGAGAATTTCAAAAATTGTTATGCATGAAACCAGTGGTAG
 AAGAAACAATGCAAGACATACATTTCCACTATGGTCGGTTTCAGGAATTTCAAAAAGAAATCTGACGTCAA
 TGCAATTATCCATTATTTAAAAGCTATAAAAAATAGAACAGGCATCATTAACAAGGATAAAAAGTATCAAT
 TCTTTGAAGAAATTGGTTTTAAGGAAACTTCGGAGAAAAGCATTAGATCTGGAAAGCTTGAGCCTCCTTG
 GGTTCTGCTACAAATTGGAAGGAAATATGAATGAAGCCCTGGAGTACTATGAGCGGGCCCTGAGACTGGC
 TGCTGACTTTGAGAACTCTGTGAGACAAGGTCCT

ACGCGTACGCGGCCGCTCGAGCAGAAACTCATCTCAGAAGAGGATCTGGCAGCAAATGATATCCTGGATT
 ACAAGGATGACGACGATAAGGTTTAA

Protein Sequence:

>RC203320 protein sequence
 Red=Cloning site Green=Tags(s)

MSTNGDDHQVKSLEQLRCHFTWELSIDDEMPDLENRVLDDQIEFLDTKYSVGIHNLAYVKHLKGQNEE
 ALKSLKEAENLMQEEHDNQNVRSLVTWGNFAWMYYHMGRLAEAQTYLDKVENICKKLSNPFYRMECEPE
 IDCEEWALLKCGGKNYERAKAFKVEVDPENPESSAGYASAYRLDGFKLATKNHKPFSLLPLRQAV
 RLNPNGYIKVLLALKLQDEGQEAEGEKYIEEALANMSSQTYVFRYAIFYRRKGSVDKALELLKKALQE
 TPTSVLLHHQIGLCYKAQMIQIKEATKGQPRGQNRKLDKMIRSAIFHFESAVEKKPTFEVAHDLARMY
 IEAGNHRKAEENFQKLLCMKPVVEETMQDIHFHYGRFQEFQKSDVNAIIHYLKAIKIEQASLTRDKSIN
 SLKLLVLRKLRKALDLESLSLLGFVYKLEGNMNEALEYERALRLAADFENSVRQGP

TRTRPLEQKLISEEDLAANDILDYKDDDDKV

Chromatograms:

https://cdn.origene.com/chromatograms/mk6153_a07.zip

Restriction Sites:

Sgfl-Mlul

Cloning Scheme:

Cloning sites used for ORF Shutting:



* The last codon before the Stop codon of the ORF

ACCN: NM_001548

ORF Size: 1434 bp

OTI Disclaimer: The molecular sequence of this clone aligns with the gene accession number as a point of reference only. However, individual transcript sequences of the same gene can differ through naturally occurring variations (e.g. polymorphisms), each with its own valid existence. This clone is substantially in agreement with the reference, but a complete review of all prevailing variants is recommended prior to use. [More info](#)

OTI Annotation: This clone was engineered to express the complete ORF with an expression tag. Expression varies depending on the nature of the gene.

Components: The ORF clone is ion-exchange column purified and shipped in a 2D barcoded Matrix tube containing 10ug of transfection-ready, dried plasmid DNA (reconstitute with 100 ul of water).

Reconstitution Method:

1. Centrifuge at 5,000xg for 5min.
2. Carefully open the tube and add 100ul of sterile water to dissolve the DNA.
3. Close the tube and incubate for 10 minutes at room temperature.
4. Briefly vortex the tube and then do a quick spin (less than 5000xg) to concentrate the liquid at the bottom.
5. Store the suspended plasmid at -20°C. The DNA is stable for at least one year from date of shipping when stored at -20°C.

RefSeq: [NM_001548.5](#)
RefSeq Size: 4396 bp

RefSeq ORF: 1437 bp

Locus ID: 3434

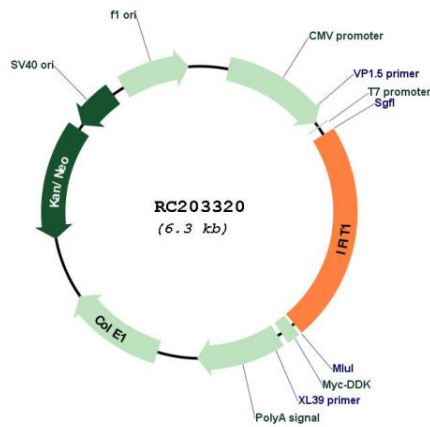
UniProt ID: [P09914](#)
Cytogenetics: 10q23.31

Domains: TPR

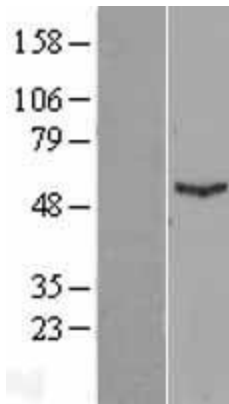
MW: 55.4 kDa

Gene Summary: This gene encodes a protein containing tetratricopeptide repeats that was originally identified as induced upon treatment with interferon. The encoded protein may inhibit viral replication and translational initiation. This gene is located in a cluster on chromosome 10 with five other closely related genes. There is a pseudogene for this gene on chromosome 13. Alternatively spliced transcript variants encoding multiple isoforms have been observed. [provided by RefSeq, Aug 2012]

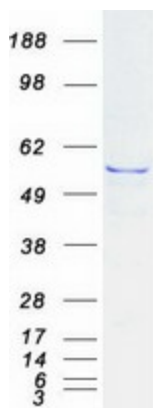
Product images:



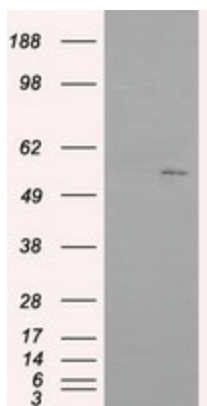
Circular map for RC203320



Western blot validation of overexpression lysate (Cat# [LY400592]) using anti-DDK antibody (Cat# [TA50011-100]). Left: Cell lysates from untransfected HEK293T cells; Right: Cell lysates from HEK293T cells transfected with RC203320 using transfection reagent MegaTran 2.0 (Cat# [TT210002]).



Coomassie blue staining of purified IFIT1 protein (Cat# [TP303320]). The protein was produced from HEK293T cells transfected with IFIT1 cDNA clone (Cat# RC203320) using MegaTran 2.0 (Cat# [TT210002]).



HEK293T cells were transfected with the pCMV6-ENTRY control (Cat# [PS100001], Left lane) or pCMV6-ENTRY IFIT1 (Cat# RC203320, Right lane) cDNA for 48 hrs and lysed. Equivalent amounts of cell lysates (5 ug per lane) were separated by SDS-PAGE and immunoblotted with anti-IFIT1 (Cat# [TA500948]). Positive lysates [LY400592] (100ug) and [LC400592] (20ug) can be purchased separately from OriGene.