

Product datasheet for RC203150

Amphiregulin (AREG) (NM_001657) Human Tagged ORF Clone

Product data:

Product Type:	Expression Plasmids
Product Name:	Amphiregulin (AREG) (NM_001657) Human Tagged ORF Clone
Tag:	Myc-DDK
Symbol:	Amphiregulin
Synonyms:	AR; AREGB; CRDGF; SDGF
Mammalian Cell Selection:	Neomycin
Vector:	pCMV6-Entry (PS100001)
E. coli Selection:	Kanamycin (25 ug/mL)
ORF Nucleotide Sequence:	>RC203150 representing NM_001657 Red=Cloning site Blue=ORF Green=Tags(s)

TTTTGTAATACGACTCACTATAGGGCGCCGGGAATTCGTCGACTGGATCCGGTACCGAGGAGATCTGCC
GCC**CGATCGCC**

ATGAGAGCCCCGCTGCTACCGCCGGCGCCGGTGGTGTGCTGCTCTTGATACTCGGCTCAGGCCATTATG
CTGCTGGATTGGACCTCAATGACACCTACTCTGGGAAGCGTGAACATTTTCTGGGGACCACAGTGCTGA
TGGATTTGAGGTTACCTCAAGAAGTGAGATGTCTTCAGGGAGTGAGATTTCCCCTGTGAGTGAAATGCCT
TCTAGTAGTGAACCGTCCTCGGGAGCCGACTATGACTACTCAGAAGAGTATGATAACGAACCACAAATAC
CTGGCTATATTGTCGATGATTCAGTCAGAGTTGAACAGGTAGTTAAGCCCCCAAACAAGACGGAAAG
TGAAAATACTTCAGATAAACCCAAAAGAAAAGAAAAGGGAGGCAAAAATGGAAAAATAGAAGAAACAGA
AAGAAGAAAAATCCATGTAATGCAGAAATTTCAAATTTCTGCATTACGGAGAATGCAAATATATAGAGC
ACCTGGAAGCAGTAACATGCAAATGTCAGCAAGAATATTTCCGGTGAACGGTGTGGGGAAAAGTCCATGAA
AACTCACAGCATGATTGACAGTAGTTTATCAAATTTGCATTAGCAGCCATAGCTGCCTTTATGTCTGCT
GTGATCCTCACAGCTGTTGCTGTTATTACAGTCCAGCTTAGAAGACAATACGTACGGAATATGAAGGAG
AAGCTGAGGAACGAAAGAACTTCGACAAGAGAATGGAATGTACATGCTATAGCA

ACGCGTACGCGGCCGCTCGAGCAGAACTCATCTCAGAAGAGGATCTGGCAGCAAATGATATCCTGGATT
ACAAGGATGACGACGATAAGGTTTAA



[View online »](#)

Reconstitution Method:

1. Centrifuge at 5,000xg for 5min.
2. Carefully open the tube and add 100ul of sterile water to dissolve the DNA.
3. Close the tube and incubate for 10 minutes at room temperature.
4. Briefly vortex the tube and then do a quick spin (less than 5000xg) to concentrate the liquid at the bottom.
5. Store the suspended plasmid at -20°C. The DNA is stable for at least one year from date of shipping when stored at -20°C.

RefSeq: [NM_001657.4](#)

RefSeq Size: 1270 bp

RefSeq ORF: 759 bp

Locus ID: 374

UniProt ID: [P15514](#)

Cytogenetics: 4q13.3

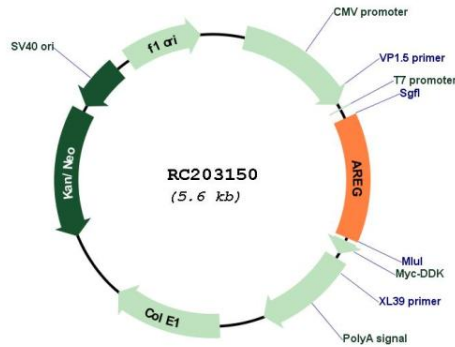
Protein Families: Druggable Genome, Transmembrane

Protein Pathways: ErbB signaling pathway

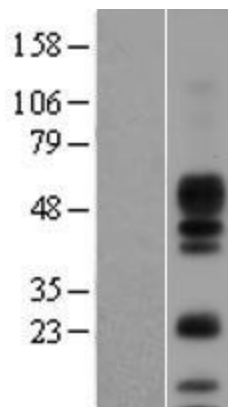
MW: 27.7 kDa

Gene Summary: The protein encoded by this gene is a member of the epidermal growth factor family. It is an autocrine growth factor as well as a mitogen for astrocytes, Schwann cells and fibroblasts. It is related to epidermal growth factor (EGF) and transforming growth factor alpha (TGF-alpha). The protein interacts with the EGF/TGF-alpha receptor to promote the growth of normal epithelial cells, and it inhibits the growth of certain aggressive carcinoma cell lines. It also functions in mammary gland, oocyte and bone tissue development. This gene is associated with a psoriasis-like skin phenotype, and is also associated with other pathological disorders, including various types of cancers and inflammatory conditions. [provided by RefSeq, Apr 2014]

Product images:



Circular map for RC203150



Western blot validation of overexpression lysate (Cat# [LY400625]) using anti-DDK antibody (Cat# [TA50011-100]). Left: Cell lysates from untransfected HEK293T cells; Right: Cell lysates from HEK293T cells transfected with RC203150 using transfection reagent MegaTran 2.0 (Cat# [TT210002]).