

Product datasheet for **RC202925**

PLTP (NM_182676) Human Tagged ORF Clone

Product data:

Product Type:	Expression Plasmids
Product Name:	PLTP (NM_182676) Human Tagged ORF Clone
Tag:	Myc-DDK
Symbol:	PLTP
Synonyms:	BPIFE; HDLCQ9
Mammalian Cell Selection:	Neomycin
Vector:	pCMV6-Entry (PS100001)
E. coli Selection:	Kanamycin (25 ug/mL)



[View online »](#)

ORF Nucleotide
Sequence:

>RC202925 ORF sequence
Red=Cloning site Blue=ORF Green=Tags(s)

TTTTGTAATACGACTCACTATAGGGCGGCCGGAATTCGTCGACTGGATCCGGTACCGAGGAGATCTGCC
GCCGCGATCGCC

ATGGCCCTCTTCGGGCCCTCTTCTAGCGCTGCTGGCAGGCGCACATGCAGAGTCCCAGGCTGCAAGA
TCCGCGTCACCTCCAAGGCGCTGGAGCTGGTGAAGCAGGAGGGGCTGCGCTTCTGGAGCAAGAGCTGGA
GACTATACCAATTCGGACCTGCGGGGCAAGAAGGCCACTTCTACTACAACATCTCTGAGGTGAAGGTC
ACAGAGCTGCAACTGACATCTTCCGAGCTCGATTTCCAGCCACAGCAGGAGCTGATGCTTCAAATCACCA
ATGCCTCCTTGGGGTGCCTTCCGGAGACAGCTGCTCTACTGGTTCTTGAAGGTGATGATTTTCTCTC
CACGTTTCATCACCTCAGGGATGCGCTTCTCCTCAACCAGCAGATCTGCCCTGTCCTCTACCACGCAGGG
ACGGTCTGCTCAACTCCCTCTGGACACCGTGCCTGTGCGCAGTTCTGTGGACGAGCTTGTGGCATTG
ACTATCCCTCATGAAGGATCCTGTGGCTTCCACCAGCAACCTGGACATGGACTCCGGGGGCTTCTT
CCCCCTGACTGAGAGGAAGTGGAGCCTCCCAACCGGGCAGTGGAGCCCCAGCTGCAGGAGGAAGAGCGG
ATGGTGTATGTGGCCTTCTCTGAGTTCTTCTTCTGACTCTGCCATGGAGAGCTACTCCGGGGCGGGGCC
TGCAGCTGTTGCTGGTGGGGGACAAGGTGCCCCACGACCTGGACATGCTGCTGAGGGCCACCTACTTTGG
GAGCATTGCTGCTGAGCCAGCAGTATTGACTCCCCATTGAAGCTGGAGCTGCGGGTCTGGCCCCA
CCGCGTGCACCATCAAGCCCTCTGGCACCACCATCTCTGTCAGTCTAGCGTACCATTGCCCTGGTCC
CACCAGACCAGCTGAGGTCCAGCTGTCCAGCATGACTATGGACGCCCCTCTCAGCGCAAGATGGCTCT
CCGGGGGAAGGCCCTGCGCACGAGCTGGACCTGCGCAGTTCCGAATCTATTCCAACCTTCTGCACTG
GAGTCGCTGGCTCTGATCCATTACAGGCCCTCTGAAGACCATGCTGCAGATTGGGGTGATGCCCATGC
TCAATGAGCGGACCTGGCGTGGGGTGCAGATCCCACTACCTGAGGGCATCAACTTTGTGCATGAGGTGGT
GACGAACCATGCGGGATTCTCACCATCGGGGCTGATCTCCACTTGGCCAAAGGGCTGCGAGAGGTGATT
GAGAAGAACCGCCTGCTGATGTAGGGCGTCCACTGCCCCACACCGTCCACAGCAGCTGTC

ACGCGTACGCGGCCGCTCGAGCAGAACTCATCTCAGAAGAGGATCTGGCAGCAATGATATCCTGGATT
ACAAGGATGACGACGATAAGGTTTAA

Protein Sequence:

>RC202925 protein sequence
Red=Cloning site Green=Tags(s)

MALFGALFLALLAGAHAEFPGCKIRVTSKALELVKQEGLRFLEQELETITIPDLRGKEGHFYNISEVKV
TELQLTSSELDFOQQELMLQITNASLGLRFRQLLYWFLKVYDFLSTFITSGMRFLNQQICPVLVYHAG
TVLLNSLLDTPVVRSSVDELVGIDYSLMKDPVASTSNLDMDFRGAFFPLTERNWSPNRAVEPQLQEEER
MYYVAFSEFFDSAMESYFRAGALQLLLVGDKVPHDLMLLRATYFGSIVLLSPAVIDSPLKLELRVLAP
PRCTIKPSGTTISVTASVTIALVPPDQPEVQLSSMTMDARLSAKMALRGKALRTQLDLRRFRIYSNHSAL
ESLALIPLQAPLKTMLQIGVMPMLNERTWRGVQIPLPEGINFVHEVVTNHAGFLTIGADLHFAKGLREVI
EKNRPADVRASTAPTSTAAV

TRTRPLEQKLISEEDLAANDILDYKDDDDKV

Chromatograms:

https://cdn.origene.com/chromatograms/mk6411_d11.zip

Restriction Sites:

SgfI-MluI

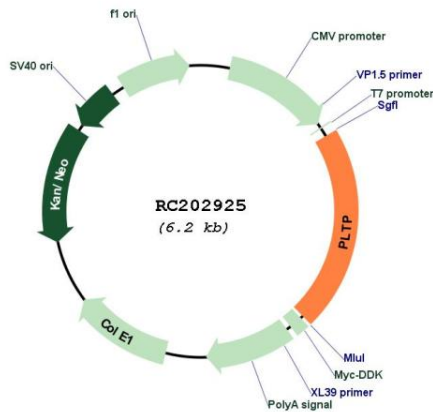
Protein Families: Druggable Genome, Secreted Protein

Protein Pathways: PPAR signaling pathway

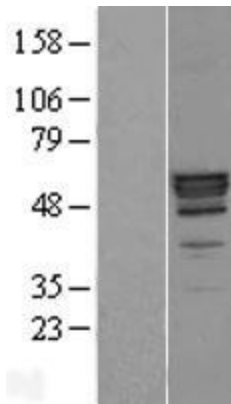
MW: 49.3 kDa

Gene Summary: The protein encoded by this gene is one of at least two lipid transfer proteins found in human plasma. The encoded protein transfers phospholipids from triglyceride-rich lipoproteins to high density lipoprotein (HDL). In addition to regulating the size of HDL particles, this protein may be involved in cholesterol metabolism. At least two transcript variants encoding different isoforms have been found for this gene. [provided by RefSeq, Jul 2008]

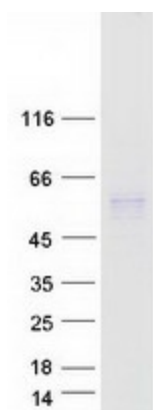
Product images:



Circular map for RC202925



Western blot validation of overexpression lysate (Cat# [LY405442]) using anti-DDK antibody (Cat# [TA50011-100]). Left: Cell lysates from untransfected HEK293T cells; Right: Cell lysates from HEK293T cells transfected with RC202925 using transfection reagent MegaTran 2.0 (Cat# [TT210002]).



Coomassie blue staining of purified PLTP protein (Cat# [TP302925]). The protein was produced from HEK293T cells transfected with PLTP cDNA clone (Cat# RC202925) using MegaTran 2.0 (Cat# [TT210002]).