

## Product datasheet for RC202915L3

### NDUFV3 (NM\_021075) Human Tagged Lenti ORF Clone

#### Product data:

Product Type:	Expression Plasmids
Product Name:	NDUFV3 (NM_021075) Human Tagged Lenti ORF Clone
Tag:	Myc-DDK
Symbol:	NDUFV3
Synonyms:	CI-9KD; CI-10k
Mammalian Cell Selection:	Puromycin
Vector:	pLenti-C-Myc-DDK-P2A-Puro (PS100092)
E. coli Selection:	Chloramphenicol (34 ug/mL)
ORF Nucleotide Sequence:	The ORF insert of this clone is exactly the same as(RC202915).
Restriction Sites:	SgfI-MluI
Cloning Scheme:	

Cloning sites used for ORF Shuttling:



\* The last codon before the Stop codon of the ORF.

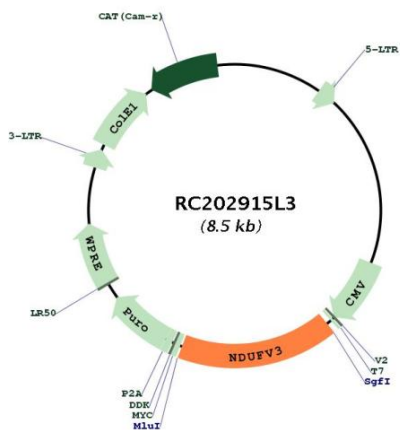
ACCN:	NM_021075
ORF Size:	1419 bp



[View online »](#)

<b>OTI Disclaimer:</b>	The molecular sequence of this clone aligns with the gene accession number as a point of reference only. However, individual transcript sequences of the same gene can differ through naturally occurring variations (e.g. polymorphisms), each with its own valid existence. This clone is substantially in agreement with the reference, but a complete review of all prevailing variants is recommended prior to use. <a href="#">More info</a>
<b>OTI Annotation:</b>	This clone was engineered to express the complete ORF with an expression tag. Expression varies depending on the nature of the gene.
<b>Components:</b>	The ORF clone is ion-exchange column purified and shipped in a 2D barcoded Matrix tube containing 10ug of transfection-ready, dried plasmid DNA (reconstitute with 100 ul of water).
<b>Reconstitution Method:</b>	<ol style="list-style-type: none"><li>1. Centrifuge at 5,000xg for 5min.</li><li>2. Carefully open the tube and add 100ul of sterile water to dissolve the DNA.</li><li>3. Close the tube and incubate for 10 minutes at room temperature.</li><li>4. Briefly vortex the tube and then do a quick spin (less than 5000xg) to concentrate the liquid at the bottom.</li><li>5. Store the suspended plasmid at -20°C. The DNA is stable for at least one year from date of shipping when stored at -20°C.</li></ol>
<b>RefSeq:</b>	<a href="#">NM_021075.3</a> , <a href="#">NP_066553.3</a>
<b>RefSeq Size:</b>	2151 bp
<b>RefSeq ORF:</b>	1422 bp
<b>Locus ID:</b>	4731
<b>UniProt ID:</b>	<a href="#">P56181</a>
<b>Cytogenetics:</b>	21q22.3
<b>Protein Pathways:</b>	Alzheimer's disease, Huntington's disease, Metabolic pathways, Oxidative phosphorylation, Parkinson's disease
<b>MW:</b>	51 kDa
<b>Gene Summary:</b>	The protein encoded by this gene is one of at least forty-one subunits that make up the NADH-ubiquinone oxidoreductase complex. This complex is part of the mitochondrial respiratory chain and serves to catalyze the rotenone-sensitive oxidation of NADH and the reduction of ubiquinone. The encoded protein is one of three proteins found in the flavoprotein fraction of the complex. The specific function of the encoded protein is unknown. Two transcript variants encoding different isoforms have been found for this gene. [provided by RefSeq, Jul 2008]

Product images:



Circular map for RC202915L3