

## Product datasheet for RC202853

### ABI3 (NM\_016428) Human Tagged ORF Clone

#### Product data:

Product Type:	Expression Plasmids
Product Name:	ABI3 (NM_016428) Human Tagged ORF Clone
Tag:	Myc-DDK
Symbol:	ABI3
Synonyms:	NESH; SSH3BP3
Mammalian Cell Selection:	Neomycin
Vector:	pCMV6-Entry (PS100001)
E. coli Selection:	Kanamycin (25 ug/mL)
ORF Nucleotide Sequence:	>RC202853 ORF sequence Red=Cloning site Blue=ORF Green=Tags(s)

TTTTGTAATACGACTCACTATAGGGCGGCCGGAATTCGTCGACTGGATCCGGTACCGAGGAGATCTGCC  
GCC**CGATCGCC**

ATGGCGGAGCTACAGCAGCTGCAGGAGTTGAGATCCCCACTGGCCGGGAGGCTCTGAGGGCAACCACA  
GTGCCCTGCTGCGGGTCGCTGACTACTGCGAGGACAACATGTGCAGGCCACAGACAAGCGGAAGGCGCT  
GGAGGAGACCATGGCCTTCACTACCCAGGCACTGGCCAGCGTGGCCTACCAGGTGGGCAACCTGGCCGGG  
CACACTCTGCGCATGTTGGACCTGCAGGGGGCCGCCCTGCGGCAGGTGGAAGCCCGTGAAGCACGCTGG  
GCCAGATGGTGAACATGCATATGGAGAAGGTGGCCGAAGGGAGATCGGCACCTTAGCCACTGTCCAGCG  
GCTGCCCGCCGGCCAGAAGGTATCGCCCCAGAGAACCTACCCCTCTCACGCCCTACTGCAGGAGACCC  
CTCAACTTTGGCTGCCTGGACGACATTGGCCATGGGATCAAGGACCTCAGCACGCAGCTGTCAAGAACAG  
GCACCCTGTCTCGAAAGAGCATCAAGGCCCTGCCACACCCGCCTCCGCCACCTTGGGGAGACCACCCCG  
GATTCGGAGCCAGTGCACCTGCCGGTGGTGCCCGACGGCAGACTCTCCGCCGCCTCCTCTGCGTCTTCC  
CTGGCCTCGGCCGCGCAGCGCCGAAGGTGTCGGTGGGGCCCCACGCCAAGGGGCAGGCAGCACCTCCAG  
CCCCACCTCTCCCAGCTCCTTGGACCCACCTCCTCCACCAGCAGCCGTCGAGGTGTTCCAGCGGCCTCC  
CACGCTGGAGGAGTTGTCCCCACCCACCCGACGAAGAGTGCCCTGCCACTGGACCTGCCTCCTCCT  
CCACCCCTGGATGGAGATGAATTGGGGCTGCCTCCACCCACCCAGGATTTGGCCCTGATGAGCCAGCT  
GGGTGCCTCATACTTGAGAAAAGTGGTGACACTGTACCCATACACCAGCCAGAAGGACAATGAGCT  
CTCCTTCTCTGAGGGCACTGTCTGTGTCACTCGCCGCTACTCCGATGGCTGGTGCAGGGCGTCAAG  
TCAGAGGGGACTGGATTCTCCCTGGAACTATGTGGAGCCAGCTGC

**ACGCGT**ACGCGGCCGCTCGAGCAGAACTCATCTCAGAAGAGGATCTGGCAGCAAATGATATCCTGGATT  
ACAAGGATGACGACGATAAGGTTAA



[View online »](#)

**Protein Sequence:** >RC202853 protein sequence  
Red=Cloning site Green=Tags(s)

MAELQQLQEF EIPTGREALRGNHSALLRVADYCEDNYVQATDKRKALEETMAFTTQALASVAYQVGNLAG  
 HTLRMLDLQGAALRQVEARVSTLGQMVNMHMEKVARREIGTLATVQRLPPGQKVIAPENLPLTPYCRRP  
 LNFGLDDIGHGIKDLSTQLSRTGTL SRKSIKAPATPASATLGRPPRIPEPVHLPVVPDGRLSAASSASS  
 LASAGSAEGVGGAPT PKGQAAPPAPL PSSLDP PPPPA AVEVFQRPTLEELSPPPPDEELPLPLDLPPP  
 PPLDGDDELGLPPPPPGF PDEPSWVPASYLEKVVTLYPYTSQKDNELSFSEGTVICVTRRYS D G W C E G V S  
 SEGTGFFPGNYVEPSC

TRTRPLEQKLISEEDLAANDILDYKDDDDKV

**Chromatograms:** [https://cdn.origene.com/chromatograms/mk6411\\_d05.zip](https://cdn.origene.com/chromatograms/mk6411_d05.zip)

**Restriction Sites:** SgfI-MluI

**Cloning Scheme:**



\* The last codon before the Stop codon of the ORF

**ACCN:** NM\_016428

**ORF Size:** 1098 bp

**OTI Disclaimer:** The molecular sequence of this clone aligns with the gene accession number as a point of reference only. However, individual transcript sequences of the same gene can differ through naturally occurring variations (e.g. polymorphisms), each with its own valid existence. This clone is substantially in agreement with the reference, but a complete review of all prevailing variants is recommended prior to use. [More info](#)

**OTI Annotation:** This clone was engineered to express the complete ORF with an expression tag. Expression varies depending on the nature of the gene.

**Components:** The ORF clone is ion-exchange column purified and shipped in a 2D barcoded Matrix tube containing 10ug of transfection-ready, dried plasmid DNA (reconstitute with 100 ul of water).

**Reconstitution Method:**

1. Centrifuge at 5,000xg for 5min.
2. Carefully open the tube and add 100ul of sterile water to dissolve the DNA.
3. Close the tube and incubate for 10 minutes at room temperature.
4. Briefly vortex the tube and then do a quick spin (less than 5000xg) to concentrate the liquid at the bottom.
5. Store the suspended plasmid at -20°C. The DNA is stable for at least one year from date of shipping when stored at -20°C.

**RefSeq:** [NM\\_016428.2](#), [NP\\_057512.1](#)

**RefSeq Size:** 2129 bp

**RefSeq ORF:** 1101 bp

**Locus ID:** 51225

**UniProt ID:** [Q9P2A4](#)

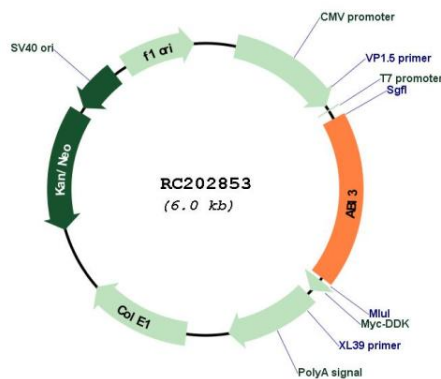
**Cytogenetics:** 17q21.32

**Domains:** SH3

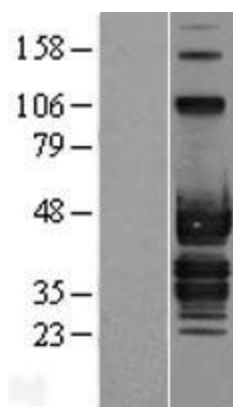
**MW:** 39 kDa

**Gene Summary:** This gene encodes a member of an adaptor protein family. Members of this family encode proteins containing a homeobox homology domain, proline rich region and Src-homology 3 (SH3) domain, and are components of the Abi/WAVE complex which regulates actin polymerization. The encoded protein inhibits ectopic metastasis of tumor cells as well as cell migration. This may be accomplished through interaction with p21-activated kinase. Alternative splicing results in multiple transcript variants. [provided by RefSeq, Sep 2013]

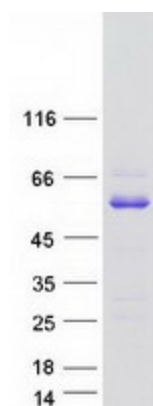
### Product images:



Circular map for RC202853



Western blot validation of overexpression lysate (Cat# [LY414015]) using anti-DDK antibody (Cat# [TA50011-100]). Left: Cell lysates from untransfected HEK293T cells; Right: Cell lysates from HEK293T cells transfected with RC202853 using transfection reagent MegaTran 2.0 (Cat# [TT210002]).



Coomassie blue staining of purified ABI3 protein (Cat# [TP302853]). The protein was produced from HEK293T cells transfected with ABI3 cDNA clone (Cat# RC202853) using MegaTran 2.0 (Cat# [TT210002]).