

Product datasheet for **RC202703**

Caveolin 2 (CAV2) (NM_001233) Human Tagged ORF Clone

Product data:

Product Type: Expression Plasmids
Product Name: Caveolin 2 (CAV2) (NM_001233) Human Tagged ORF Clone
Tag: Myc-DDK
Symbol: Caveolin 2
Synonyms: CAV
Mammalian Cell Selection: Neomycin
Vector: pCMV6-Entry (PS100001)
E. coli Selection: Kanamycin (25 ug/mL)
ORF Nucleotide Sequence: >RC202703 representing NM_001233
Red=Cloning site Blue=ORF Green=Tags(s)

TTTTGTAATACGACTCACTATAGGGCGGCCGGAATTCGTCGACTGGATCCGGTACCGAGGAGATCTGCC
GCC**CGATCGCC**

ATGGGGCTGGAGACGGAGAAGGCCGGACGTACAGCTCTTCATGGACGACGACTCCTACAGCCACCACAGCG
GCCTCGAGTACGCCGACCCGAGAAGTTCGCGGACTCGGACCAGGACCGGGATCCCCACCGGCTCAACTC
GCATCTCAAGCTGGGCTTCGAGGATGTGATCGCAGAGCCGGTACTACGCACTCCTTTGACAAAGTGTGG
ATCTGCAGCCATGCCCTCTTTGAAATCAGCAAATACGTAATGTACAAGTTCCTGACGGTGTCTCTGGCCA
TTCCCCTGGCCTTCATTGCGGGAATTCTCTTTGCCACCCTCAGCTGTCTGCACATCTGGATTTTAATGCC
TTTTGTAAGACCTGCCTAATGGTTCGCTTCAGTGCAGACAATATGGAAGAGTGTGACAGATGTTATC
ATTGCTCCATTGTGTACGAGCGTAGGACGATGCTTCTTCTGTGACCTGCAACTGAGCCAGGAT

ACGCGTACGCGGCCGCTCGAGCAGAACTCATCTCAGAAGAGGATCTGGCAGCAAATGATATCCTGGATT
ACAAGGATGACGACGATAAGGTTTAA

Protein Sequence: >RC202703 representing NM_001233
Red=Cloning site Green=Tags(s)

MGLETEKADVQLFMDSDSYSHSGLEYADPEKFADSDQDRDPHRLNSHLKLGFEVDIAEPTVTHSFDKVV
ICSHALFEISKYVMYKFLTVFLAIPLAFIAGILFATLSCLHIWILMPFVKTCMLMVLPSVQTIWKSVDVI
IAPLCTSVGRCFSSVSLQLSQD

TRTRPLEQKLISEEDLAANDILDYKDDDDKV

Chromatograms: https://cdn.origene.com/chromatograms/mg2448_e09.zip



[View online »](#)

UniProt ID: [P51636](#)

Cytogenetics: 7q31.2

Domains: Caveolin

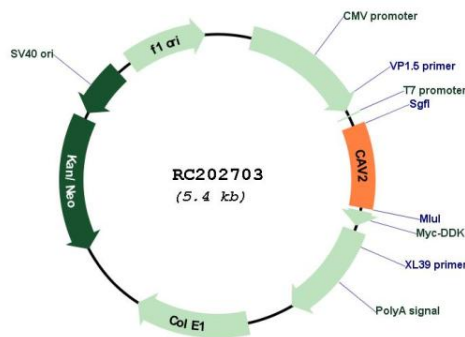
Protein Families: Druggable Genome, Transmembrane

Protein Pathways: Focal adhesion

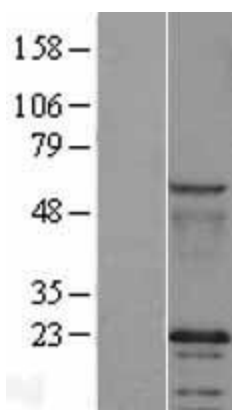
MW: 18.1 kDa

Gene Summary: The protein encoded by this gene is a major component of the inner surface of caveolae, small invaginations of the plasma membrane, and is involved in essential cellular functions, including signal transduction, lipid metabolism, cellular growth control and apoptosis. This protein may function as a tumor suppressor. This gene and related family member (CAV1) are located next to each other on chromosome 7, and express colocalizing proteins that form a stable hetero-oligomeric complex. Alternatively spliced transcript variants encoding different isoforms have been identified for this gene. Additional isoforms resulting from the use of alternate in-frame translation initiation codons have also been described, and shown to have preferential localization in the cell (PMID:11238462). [provided by RefSeq, May 2011]

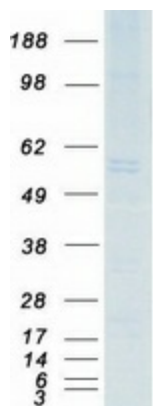
Product images:



Circular map for RC202703



Western blot validation of overexpression lysate (Cat# [LY420057]) using anti-DDK antibody (Cat# [TA50011-100]). Left: Cell lysates from untransfected HEK293T cells; Right: Cell lysates from HEK293T cells transfected with RC202703 using transfection reagent MegaTran 2.0 (Cat# [TT210002]).



Coomassie blue staining of purified CAV2 protein (Cat# [TP302703]). The protein was produced from HEK293T cells transfected with CAV2 cDNA clone (Cat# RC202703) using MegaTran 2.0 (Cat# [TT210002]).