

## Product datasheet for RC202435

### CSNK2A2 (NM\_001896) Human Tagged ORF Clone

#### Product data:

Product Type:	Expression Plasmids
Product Name:	CSNK2A2 (NM_001896) Human Tagged ORF Clone
Tag:	Myc-DDK
Symbol:	CSNK2A2
Synonyms:	CK2A2; CK2alpha'; CSNK2A1
Mammalian Cell Selection:	Neomycin
Vector:	pCMV6-Entry (PS100001)
E. coli Selection:	Kanamycin (25 ug/mL)
ORF Nucleotide Sequence:	>RC202435 ORF sequence Red=Cloning site Blue=ORF Green=Tags(s)

TTTTGTAATACGACTCACTATAGGGCGGCCGGAATTCGTCGACTGGATCCGGTACCGAGGAGATCTGCC  
GCC**CGGATCGCC**

ATGCCCGCCCGCCGCGGGCAGCAGGGCCCGGTCTACGCCGAGGTGAACAGTCTGAGGAGCCGCGAGT  
ACTGGGACTACGAGGCTCACGTCCCGAGCTGGGGTAATCAAGATGATTACCAACTGGTTCGAAAACCTGG  
TCGGGGAAAATATAGTGAAGTATTTGAGGCCATTAATATCACCAACAATGAGAGAGTGGTTGAAAAATC  
CTGAAGCCAGTGAAGAAAAAGAAGATAAAACGAGAGGTTAAGATTCTGGAGAACCCTCGTGGTGAACAA  
ATATCATTAAAGCTGATTGACACTGTAAAGACCCCGTGTCAAAGACACCAGCTTTGGTATTTGAATATAT  
CAATAATACAGATTTTAAGCAACTCTACCAGATCCTGACAGACTTTGATATCCGGTTTTATATGTATGAA  
CTACTTAAAGCTCTGGATTACTGCCACAGCAAGGGAATCATGCACAGGGATGTGAAACCTCACAATGTCA  
TGATAGATCACCAACAGAAAAAGCTGCGACTGATAGATTGGGGTCTGGCAGAATTCTATCATCTCTGCTCA  
GGAGTACAATGTTTCGTGTAGCCTCAAGGTACTTCAAGGGACCAGAGCTCCTCGTGGACTATCAGATGTAT  
GATTATAGCTTGGACATGTGGAGTTTGGGCTGTATGTTAGCAAGCATGATCTTTCGAAGGGAACCATCT  
TCCATGGACAGGACAACATGACCAGCTTGTTTCGATTGCCAAGGTTCTGGGTACAGAAGAACTGTATGG  
GTATCTGAAGAAGTATCACATAGACCTAGATCCACACTTCAACGATATCCTGGGACAACATTACCGGAAA  
CGCTGGGAAAACCTTATCCATAGTGAGAACAGACACCTTGTGAGCCCTGAGGCCCTAGATCTTCTGGACA  
AACTTCTGCGATACGACCATCAACAGAGACTGACTGCCAAAGAGGCCATGGAGCACCCATACCTTCTACCC  
TGTGGTGAAGGAGCAGTCCAGCCTTGTGCAGACAATGCTGTGCTTTCCAGTGGTCTCACGGCAGCACGA

**ACGCGT**ACGCGGCCGCTCGAGCAGAAACTCATCTCAGAAGAGGATCTGGCAGCAATGATATCCTGGATT  
ACAAGGATGACGACGATAAGGTTTAA

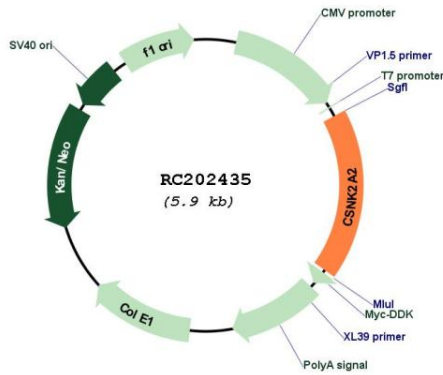


[View online »](#)

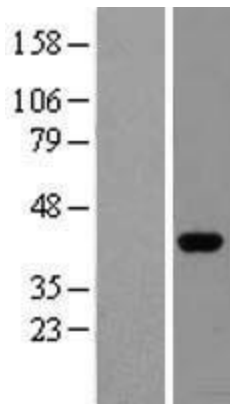


<b>Reconstitution Method:</b>	<ol style="list-style-type: none"><li>1. Centrifuge at 5,000xg for 5min.</li><li>2. Carefully open the tube and add 100ul of sterile water to dissolve the DNA.</li><li>3. Close the tube and incubate for 10 minutes at room temperature.</li><li>4. Briefly vortex the tube and then do a quick spin (less than 5000xg) to concentrate the liquid at the bottom.</li><li>5. Store the suspended plasmid at -20°C. The DNA is stable for at least one year from date of shipping when stored at -20°C.</li></ol>
<b>RefSeq:</b>	<a href="#">NM_001896.4</a>
<b>RefSeq Size:</b>	1674 bp
<b>RefSeq ORF:</b>	1053 bp
<b>Locus ID:</b>	1459
<b>UniProt ID:</b>	<a href="#">P19784</a>
<b>Cytogenetics:</b>	16q21
<b>Domains:</b>	pkinase, TyrKc, S_TKc
<b>Protein Families:</b>	Druggable Genome, Protein Kinase
<b>Protein Pathways:</b>	Adherens junction, Tight junction, Wnt signaling pathway
<b>MW:</b>	41.2 kDa
<b>Gene Summary:</b>	<p>This gene encodes the alpha', or alpha 2, catalytic subunit of the protein kinase enzyme, casein kinase 2 (CK2). Casein kinase 2 is a serine/threonine protein kinase that phosphorylates acidic proteins such as casein. It is involved in various cellular processes, including cell cycle control, apoptosis, and circadian rhythms. This heterotetrameric kinase includes two catalytic subunits, either alpha or alpha', and two regulatory beta subunits. The closely related gene paralog encoding the alpha, or alpha 1 subunit (CSNK2A1, Gene ID: 1457) is found on chromosome 20. An intronic variant in this gene (alpha 2) may be associated with leukocyte telomere length in a South Asian population. A related transcribed pseudogene is found on chromosome 11. [provided by RefSeq, Aug 2017]</p>

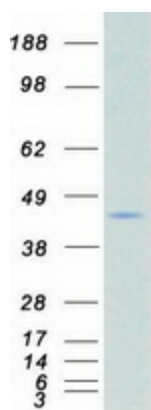
Product images:



Circular map for RC202435



Western blot validation of overexpression lysate (Cat# [LY400706]) using anti-DDK antibody (Cat# [TA50011-100]). Left: Cell lysates from untransfected HEK293T cells; Right: Cell lysates from HEK293T cells transfected with RC202435 using transfection reagent MegaTran 2.0 (Cat# [TT210002]).



Coomassie blue staining of purified CSNK2A2 protein (Cat# [TP302435]). The protein was produced from HEK293T cells transfected with CSNK2A2 cDNA clone (Cat# RC202435) using MegaTran 2.0 (Cat# [TT210002]).