

Product datasheet for RC202417

WNT7A (NM_004625) Human Tagged ORF Clone

Product data:

| | |
|---------------------------|---|
| Product Type: | Expression Plasmids |
| Product Name: | WNT7A (NM_004625) Human Tagged ORF Clone |
| Tag: | Myc-DDK |
| Symbol: | WNT7A |
| Synonyms: | Wnt-7a |
| Mammalian Cell Selection: | Neomycin |
| Vector: | pCMV6-Entry (PS100001) |
| E. coli Selection: | Kanamycin (25 ug/mL) |
| ORF Nucleotide Sequence: | >RC202417 representing NM_004625 Red=Cloning site Blue=ORF Green=Tags(s) |

TTTTGTAATACGACTCACTATAGGGCGGCCGGAATTCGTCGACTGGATCCGGTACCGAGGAGATCTGCC
GCC**CGATCGC**C

ATGAACCGAAAGCGCGGCTGCCTGGGCCACCTCTTTCTCAGCCTGGGCATGGTCTACCTCCGGATCG
GTGGCTTCTCCTCAGTGGTAGCTCTGGGCGCAAGCATCATCTGTAACAAGATCCCAGGCCTGGCTCCAG
ACAGCGGGCGATCTGCCAGAGCCGGCCGACGCCATCATCGTCATAGGAGAAGGCTCACAATGGGCCTG
GACGAGTGTGAGTTTCCGCAATGGCCGCTGGAAGTCTGCACTGGGAGAGCGCACCGTCTTCG
GGAAGGAGCTCAAAGTGGGGAGCCGGGAGGCTGCGTTCACCTACGCCATCATTGCCGCCGGCGTGGCCCA
CGCCATCACAGCTGCCTGTACCCAGGGCAACCTGAGCGACTGTGGCTGCGACAAAGAGAAGCAAGGCCAG
TACCACCGGACGAGGGCTGGAAGTGGGGTGGTCTCTGCCGACATCCGCTACGGCATCGGCTTCGCCA
AGGTCTTTGTGGATGCCCGGGAGATCAAGCAGAATGCCCGGACTCTCATGAACTTGACACAACAACGAGGC
AGGCCGAAAGATCCTGGAGGAGAACATGAAGCTGGAATGTAAGTGCCACGGCGTGTGAGGCTCGTGACCC
ACCAAGACGTGCTGGACCACACTGCCACAGTTTCGGGAGCTGGGCTACGTGCTCAAGGACAAGTACAACG
AGGCCGTTACGTGGAGCCTGTGCGTGCCAGCCGCAACAAGCGGCCACCTTCTGAAGTCAAGAAGCC
ACTGTCGTACCGCAAGCCATGGACACGGACCTGGTGTACATCGAGAAGTCCGCAACTACTGCGAGGAG
GACCCGTTGACCGCAGTGTGGCACCCAGGGCCGCGCTGCAACAAGACGGCTCCCGAGCCAGCGCT
GTGACCTCATGTGCTGTGGCGTGGCTACAACACCCACCATACGCCCGGTGTGGCAGTGAACACTGTAA
GTTCCACTGCTGCTATGTCAAGTGAACACGTGCAGCGAGCGCACGGAGATGTACACGTGCAAG

ACGCGTACGCGGCCGCTCGAGCAGAACTCATCTCAGAAGAGGATCTGGCAGCAATGATATCCTGGATT
ACAAGGATGACGACGATAAGGTTTAA



[View online »](#)

Protein Sequence: >RC202417 representing NM_004625
Red=Cloning site Green=Tags(s)

MNRKARRCLGHLFLSLGMVYLRIGGFSSVVALGASIIICNKIPGLAPRQRAICQSRPDAIIVIGEGSQMGL
 DECQFQFRNGRWNCALGERTVFGKELKVGSRFAAFTYAI AAGVAHAITA AACTQGNLSDCGDKEKQGQ
 YHRDEGWKGGCSADIRYGIGFAKVFVDAREIKQNARTLMLNHNEAGRKILEENMKLECKCHGVSGSCT
 TKTCWTTLPQFRELGYVLKDKYNEAVHVEPVRASRNKRPTFLKIKKPLSYRKPMDDLVIIEKSPNYCEE
 DPVTGSGVTQGRACNKTA PQASGCDLMCCGRGYNTHQYARVWQCNCCKFWCCYVKCNTCSERTEMYTCK

TRTRPLEQKLISEEDLAANDILDYKDDDDKV

Chromatograms: https://cdn.origene.com/chromatograms/mg2643_c01.zip

Restriction Sites: SgfI-MluI

Cloning Scheme:

Cloning sites used for ORF Shuttling:



* The last codon before the Stop codon of the ORF

ACCN: NM_004625

ORF Size: 1047 bp

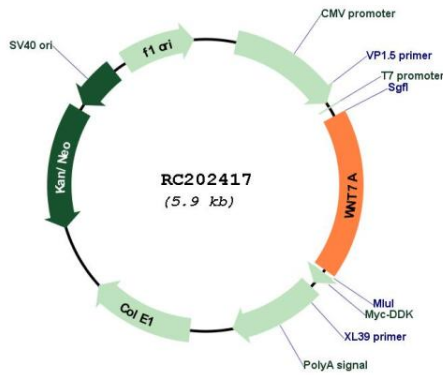
OTI Disclaimer: The molecular sequence of this clone aligns with the gene accession number as a point of reference only. However, individual transcript sequences of the same gene can differ through naturally occurring variations (e.g. polymorphisms), each with its own valid existence. This clone is substantially in agreement with the reference, but a complete review of all prevailing variants is recommended prior to use. [More info](#)

OTI Annotation: This clone was engineered to express the complete ORF with an expression tag. Expression varies depending on the nature of the gene.

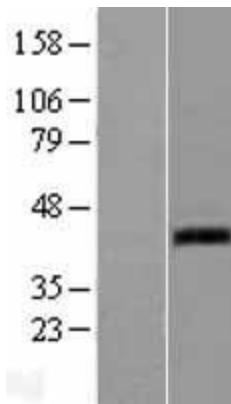
Components: The ORF clone is ion-exchange column purified and shipped in a 2D barcoded Matrix tube containing 10ug of transfection-ready, dried plasmid DNA (reconstitute with 100 ul of water).

| | |
|-------------------------------|---|
| Reconstitution Method: | <ol style="list-style-type: none">1. Centrifuge at 5,000xg for 5min.2. Carefully open the tube and add 100ul of sterile water to dissolve the DNA.3. Close the tube and incubate for 10 minutes at room temperature.4. Briefly vortex the tube and then do a quick spin (less than 5000xg) to concentrate the liquid at the bottom.5. Store the suspended plasmid at -20°C. The DNA is stable for at least one year from date of shipping when stored at -20°C. |
| RefSeq: | NM_004625.4 |
| RefSeq Size: | 1732 bp |
| RefSeq ORF: | 1050 bp |
| Locus ID: | 7476 |
| UniProt ID: | O00755 |
| Cytogenetics: | 3p25.1 |
| Domains: | wnt |
| Protein Families: | Druggable Genome, Secreted Protein, Transmembrane |
| Protein Pathways: | Basal cell carcinoma, Hedgehog signaling pathway, Melanogenesis, Pathways in cancer, Wnt signaling pathway |
| MW: | 39 kDa |
| Gene Summary: | <p>This gene is a member of the WNT gene family, which consists of structurally related genes that encode secreted signaling proteins. These proteins have been implicated in oncogenesis and in several developmental processes, including regulation of cell fate and patterning during embryogenesis. This gene is involved in the development of the anterior-posterior axis in the female reproductive tract, and also plays a critical role in uterine smooth muscle patterning and maintenance of adult uterine function. Mutations in this gene are associated with Fuhrmann and Al-Awadi/Raas-Rothschild/Schinzel phocomelia syndromes. [provided by RefSeq, Jul 2008]</p> |

Product images:



Circular map for RC202417



Western blot validation of overexpression lysate (Cat# [LY401464]) using anti-DDK antibody (Cat# [TA50011-100]). Left: Cell lysates from untransfected HEK293T cells; Right: Cell lysates from HEK293T cells transfected with RC202417 using transfection reagent MegaTran 2.0 (Cat# [TT210002]).